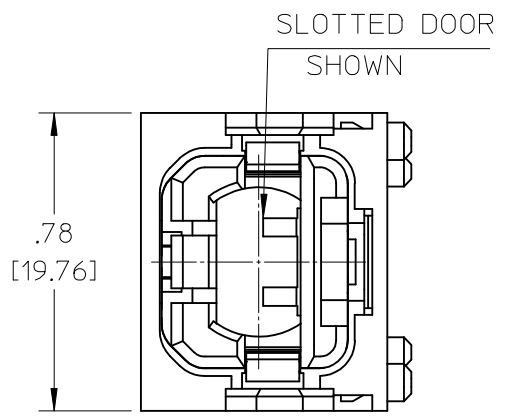
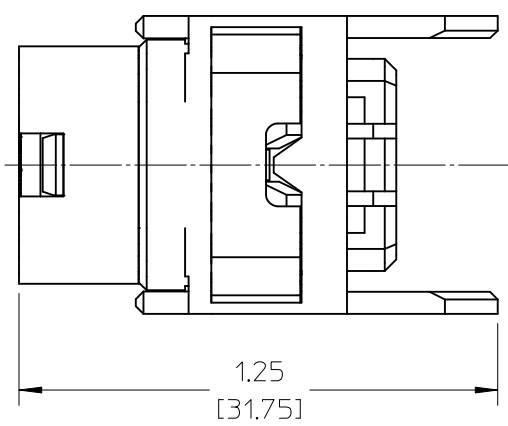
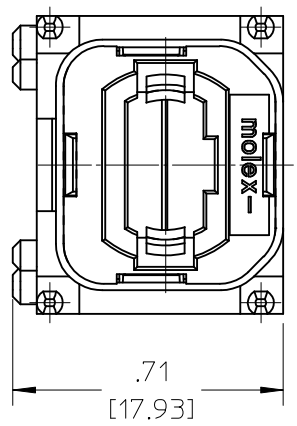
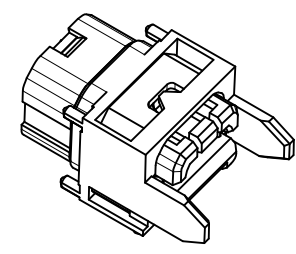
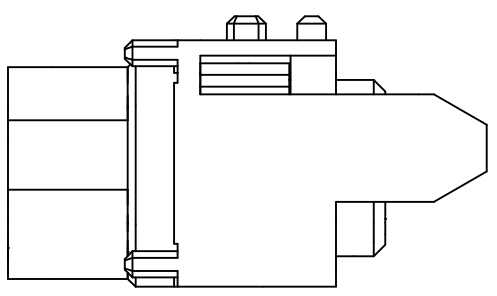


6	5
PARTS KIT P/N	ADAPTER ASSY P/N
106186-0000	106086-5212 (SLOTTED DOOR)
106186-0020	106086-5222 (NORMAL DOOR)



ENTER DESCRIPTION EC NO: MF2006-0359 DRWN:PGIBLIN 2005/11/29 CHKD: 2005/11/29 APPR:IGUMIN 2005/11/29	REV	DESCRIPTION
	A	

QUALITY SYMBOLS
▼=0
∇=0

GENERAL TOLERANCES (UNLESS SPECIFIED)		
	mm	INCH
4 PLACES	± .---	± .---
3 PLACES	± .---	± .---
2 PLACES	± .---	± .---
1 PLACE	± .---	± .---
ANGULAR ±1/2°		
DRAFT WHERE APPLICABLE MUST REMAIN WITHIN DIMENSIONS		

DIMENSION STYLE IN/MM	
DRAWN BY PGIBLIN	DATE 2005/11/18
CHECKED BY	DATE
APPROVED BY	DATE
MATERIAL NO. SEE TABLE	
SIZE A	THIS DRAWING CONTAINS INFORMATION THAT IS PROPRIETARY TO MOLEX INCORPORATED AND SHOULD NOT BE USED WITHOUT WRITTEN PERMISSION

SCALE 2:1	DESIGN UNITS INCH	THIRD ANGLE PROJECTION
TITLE SINGLE POSITION BMTP MOTHER BOARD PRESS-FIT PARTS KIT		
MOLEX MOLEX INCORPORATED		
MATERIAL NO. SD-106186-00X0	DOCUMENT NO.	SHEET NO. 1 OF 1