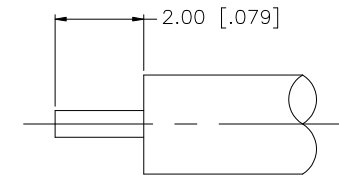
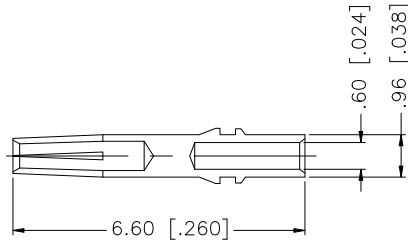
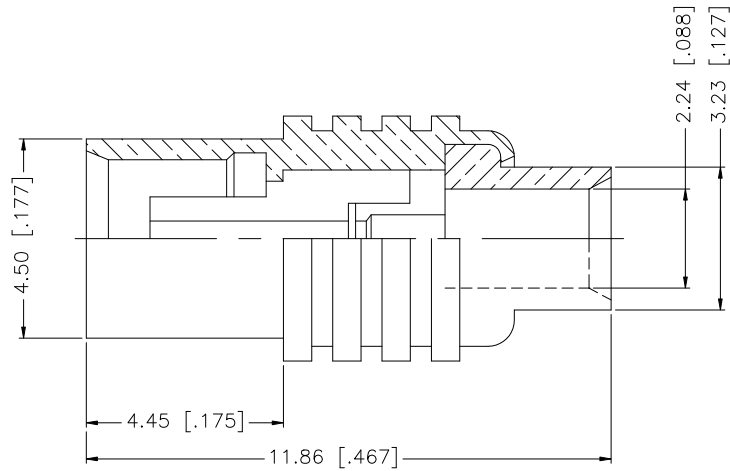


REV.	DATE	ECR NO.	DESCRIPTION
NC	01/19/98	-	INITIAL RELEASE
A	06/24/08	100039	UPDATE DRAWING FORMAT



RECOMMENDED CABLE STRIPPING DIMENSIONS

8					<small>UNLESS OTHERWISE SPECIFIED DIMENSIONS ARE IN MILLIMETERS. DIMENSIONS IN [ ] ARE IN INCHES AND FOR CUSTOMER REFERENCE ONLY.</small> <small>UNLESS OTHERWISE SPECIFIED TOLERANCES FOR MILLIMETERS ARE:</small> 0.5 - 8mm ± 0.20mm 8 - 30mm ± 0.40mm 30 - 120mm ± 0.50mm <small>UNLESS OTHERWISE SPECIFIED TOLERANCES FOR INCHES ARE:</small> .020 - .315 = ± 0.007" .315 - 1.180 = ± 0.015" 1.180 - 4.724 = ± 0.020"	APPROVALS	DATE	<h1 style="color: blue; text-align: center;">Amphenol Connex</h1>					
7				DRAWN		GRS	06/24/08					PART DESCRIPTION <h2 style="text-align: center;">MCX DIRECT SOLDER JACK (FOR .085", .086" CABLE)</h2>	
6				CHECKED				PART NO. <h2 style="text-align: center;">252131</h2>					
5				ISSUED								DWG. NO. 252131.DWG <table style="width: 100%; border: none;"> <tr> <td style="border: none;">REV. A</td> <td style="border: none;">SIZE A</td> <td style="border: none;">SCALE NA</td> </tr> </table>	
REV. A	SIZE A	SCALE NA											
4				SHEET	1 OF 1		DO NOT SCALE DRAWING						
3	CONTACT PIN	BER. COPPER	GOLD	1	CAD FILE						C:/252/252131.DWG		
2	INSULATOR	PTFE	NATURAL	1									
1	BODY	BRASS	GOLD	1									
	DESCRIPTION	MATERIAL	FINISH	QTY									