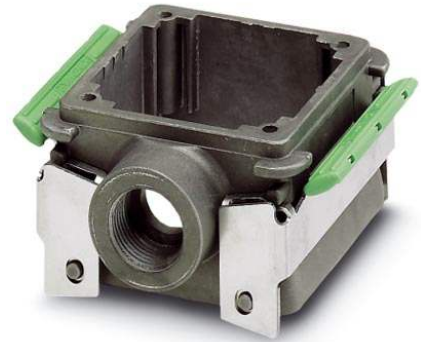



## DC-B 6-HD-M20-M

Order No.: 1602041

<http://eshop.phoenixcontact.de/phoenix/treeViewClick.do?UID=1602041>

DUPLICON, aluminum stackable housing for DUPLICON contact inserts, type B6, IP67 protection, with two locking latches, gasket and an M20 cable screw connection thread (without cable screw connection)

Commercial data	
GTIN (EAN)	 4 046356 027748
sales group	D070
Pack	10 pcs.
Customs tariff	85389099
Catalog page information	Page 407 (PC-2009)

### Product notes

WEEE/RoHS-compliant since:  
10/31/2006



<http://www.download.phoenixcontact.com>  
Please note that the data given here has been taken from the online catalog. For comprehensive information and data, please refer to the user documentation. The General Terms and Conditions of Use apply to Internet downloads.

Technical data	
<b>General data</b>	
Design	DC-B6
Height	41 mm
Width	75 mm

Length	88 mm
Color	pearl gray
Locking type	With double locking latch
No. of cable exits	1
Cable exit	Lateral
Type of the screw connection	With M20 thread
Pg screw connection	None
Protective cover	No
Degree of protection	IP65/IP66/IP67
Ambient temperature (operation)	-40 °C ... 125 °C
Housing material	Aluminum, die-cast
Housing surface material	EMC-conductive
Seal material	NBR
Material lock	Stainless steel
Material grip body interlock	PA

**Certificates / Approvals**



Certification VDE-PZI

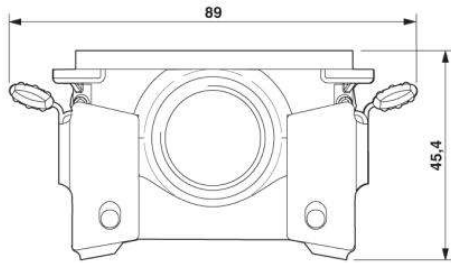
**Accessories**

Item	Designation	Description
<b>General</b>		
1602326	DC-B 6-A-HD-G	DUPLICON, profile gasket for stackable housing, made of conductive EPDM
1645998	HC-M-KV-M20(11-16)	Metal screw connection up to 5 bar, thread length: 6 mm, cable diameter: 11 - 16 mm, WAF 27, screw connection: M20
1690561	HC-M-KV-M20(9-13)	Metal screw connection up to 5 bar, thread length: 6 mm, cable diameter: 9 - 13 mm, WAF 22, screw connection: M20

<b>Marking</b>		
0816854	EML (26,5X12)R SR	Labels for thermal transfer printers, lettering field: 26.5 mm x 12 mm, 1 roll = 2,500 labels

## Diagrams/Drawings

Dimensioned drawing



Dimensional drawing

**Address**

PHOENIX CONTACT Inc., USA  
586 Fulling Mill Road  
Middletown, PA 17057, USA  
Phone (800) 888-7388  
Fax (717) 944-1625  
<http://www.phoenixcon.com>



© 2010 Phoenix Contact  
Technical modifications reserved;