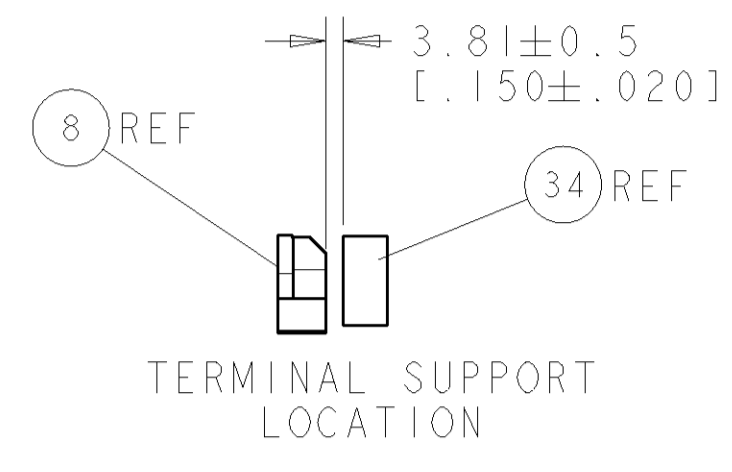
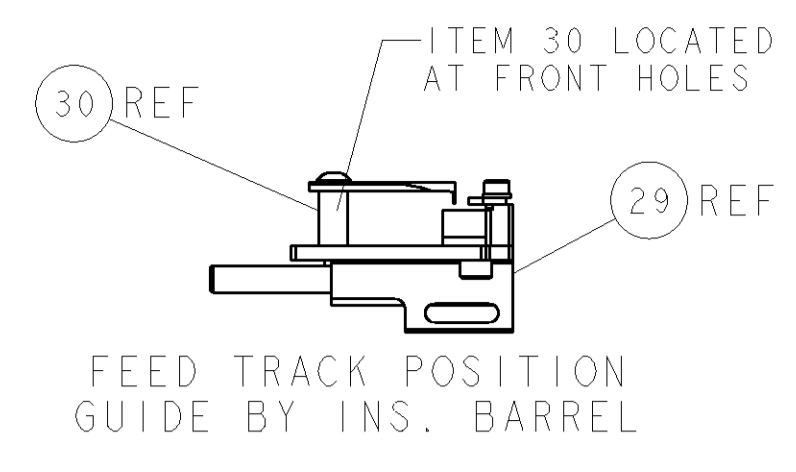
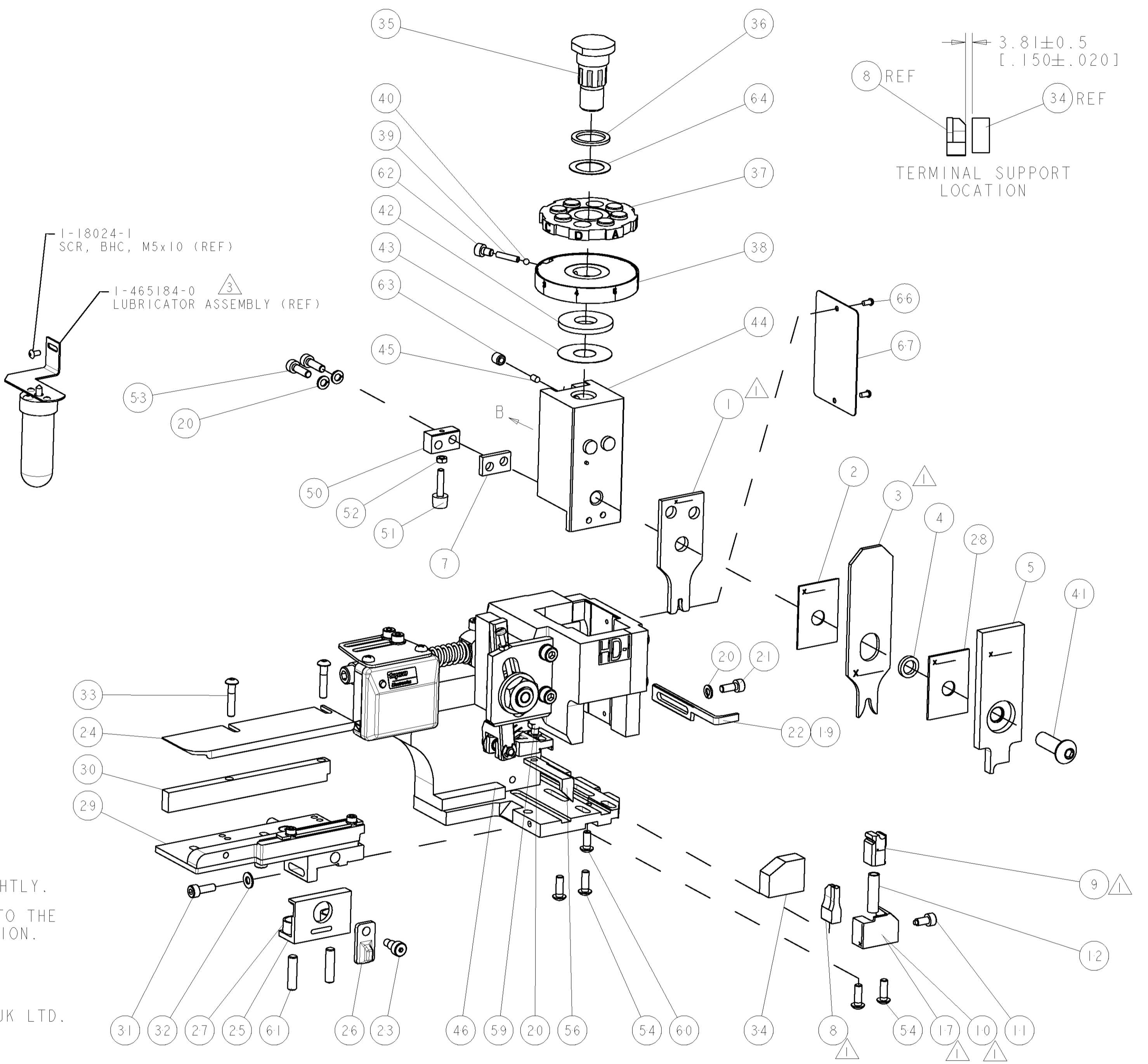
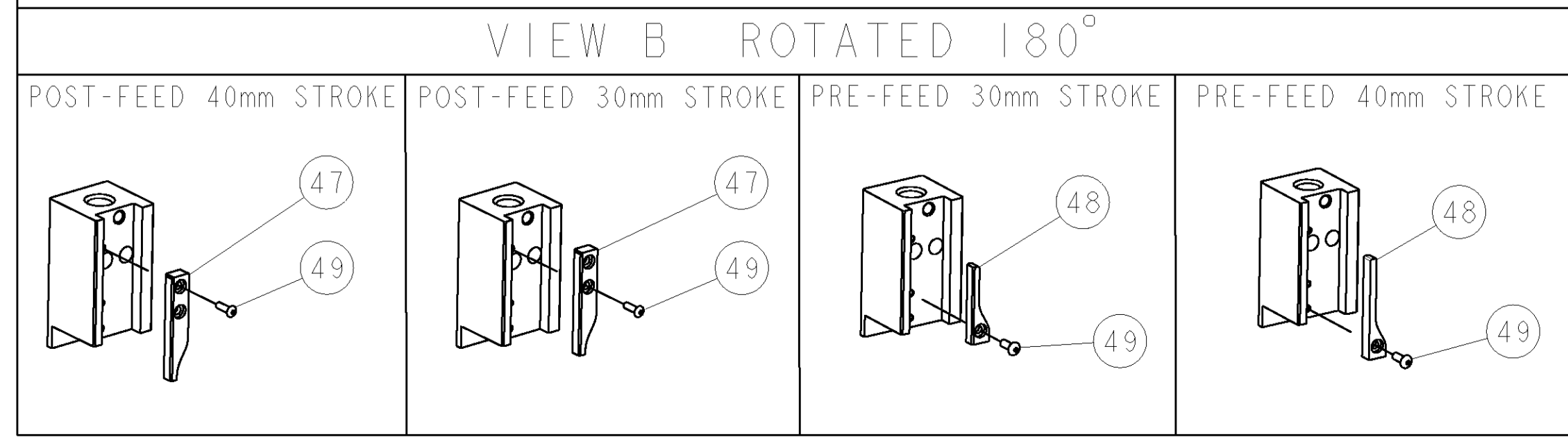


PART NUMBER	REV	TERMINATOR	FEED TYPE	DESCRIPTION
1426682-1	A	LEADMAKER	MECH POST FEED	CUTS CARRIER
1426682-2	A	BENCH	MECH PRE FEED	CUTS CARRIER
1426682-6	A	LEADMAKER	MECH POST FEED	CONTINUOUS CARRIER
7-1426682-1	A	LEADMAKER	MECH POST FEED	-1 AND SPARE PARTS
7-1426682-2	A	BENCH	MECH PRE FEED	-2 AND SPARE PARTS
7-1426682-6	A	LEADMAKER	MECH POST FEED	-6 AND SPARE PARTS
7-1426682-7	A	-	-	SPARE PARTS KIT

CRIMP DATA		HARTING TERMINAL		TE CRIMP SPECS	
TERMINAL NAME: FEMALE CONTACT CRIMP CONTOUR 3					
CRIMP	SIZE	TYPE	RANGE		
WIRE	2.29 [1.090 IN]	F	0.50-1.50mm <sup>2</sup>		
INSUL	3.56 [1.140 IN]	O	2.30-2.80 [1.090-.110 IN]		
WIRE STRIP LENGTH		APPL INSTRUCTIONS			
3.90-4.70 [1.154-.185 IN]		408-8322			
TERMINAL APPL SPEC		FEED		12.50 [4.92 IN]	
TERMINALS APPLIED					
TE TERM PN	MANUF TERM PN				
1949753-1	09 06 000 7472				
1949753-2	09 06 000 7482				
WIRE SIZE	CRIMP HEIGHT	PINPN & LENGTH [IN]			
1.50mm <sup>2</sup>	1.50 ± 0.05 [1.059 ± .002 IN]	354779-7 [1.3025]			
1.00mm <sup>2</sup>	1.37 ± 0.05 [1.054 ± .002 IN]	2-354779-0 [1.3090]			
0.50mm <sup>2</sup>	1.23 ± 0.05 [1.048 ± .002 IN]	2-354779-8 [1.3130]			

- △ RECOMMENDED SPARE PARTS.
- 2. GREASE RAM, CAM, CAM FOLLOWER AND FEED ROD LIGHTLY.
- △ CERTAIN TERMINALS REQUIRE LUBRICATION. REFER TO THE APPLICATOR INSTRUCTION SHEET FOR MORE INFORMATION.
- 4. LUBRICATE DAILY PER THE APPLICATOR INSTRUCTION SHEET SUPPLIED WITH THE APPLICATOR.
- △ ALL CRIMP DATA CALCULATED BY TYCO ELECTRONICS UK LTD.
- △ WIRE RANGE IS THAT OF THE TERMINAL.
- △ INSULATION RANGE IS THAT OF THE APPLICATOR.



SET UP GAGE 458637-3		LOC	DIST	REVISIONS			
A	66			REV	DATE	BY	APPD
				A	ECO-08-023907	25SEP2008	MB MC

REV	DATE	BY	APPD	DESCRIPTION	ITEM NO				
-	-	-	-	-	73				
-	-	-	-	-	72				
-	1	1	1	1	1	1338705-1	DOCUMENTATION PACKAGE	71	
-	-	-	-	-	70				
-	-	-	-	-	69				
-	-	-	-	-	68				
-	1	1	1	1	1	461264-1	PLATE, IDENTIFICATION	67	
-	2	2	2	2	2	21017-2	SCREW, DRIVE	66	
-	-	-	-	-	65				
-	1	1	1	1	1	986950-1	WASHER, FLAT PRECISION	64	
-	1	1	1	1	1	3-18031-0	SCR, SET, CUP POINT M6 X 6.0	63	
-	1	1	1	1	1	18023-9	SCR, SKT HD CAP M4 X 6.0	62	
-	2	2	2	2	2	2-18032-5	SCR, SET, FLT POINT M5 X 20.0	61	
-	1	1	1	1	1	18024-7	SCR, BTN SKT HD CAP (M4 X 10.0)	60	
-	1	1	1	1	1	5-18022-2	SCR, HEX HD CAP M4 X 8.0	59	
-	-	-	-	-	58				
-	-	-	-	-	57				
-	1	1	1	1	1	1338685-1	PAWL, FEED	56	
-	-	-	-	-	55				
-	4	4	4	4	4	18024-8	SCR, BTN SKT HD CAP (M4 X 12.0)	54	
-	2	2	2	2	2	9-18023-6	SCR, SKT HD CAP M4 X 14.0	53	
-	1	1	1	1	1	18030-1	NUT, HEX, REG M3	52	
-	1	1	1	1	1	811242-5	BUMPER, HOLD DOWN	51	
-	1	1	1	1	1	690753-2	SPACER, TONKER	50	
-	1	1	1	1	1	18024-3	SCR, BTN SKT HD CAP (M3 X 10.0)	49	
-	1	1	1	1	1	1338675-1	CAM, UNIVERSAL PRE FEED	48	
-	1	1	1	1	1	1338676-1	CAM, UNIVERSAL POST-FEED	47	
-	1	1	1	1	1	1320999-3	APPLICATOR SUBASSEMBLY, HDI	46	
-	1	1	1	1	1	690191-1	PLUG, NYLON	45	
-	1	1	1	1	1	1338660-1	RAM	44	
-	1	1	1	1	1	690125-1	SHIM SUB-ASSY	43	
-	1	1	1	1	1	690124-1	WASHER, RAM (.115)	42	
-	1	1	1	1	1	2-18024-6	SCR, BTN SKT HD CAP (M8 X 25.0)	41	
-	1	1	1	1	1	23241-1	BALL, STEEL	40	
-	1	1	1	1	1	2-22278-7	SPRING, COMPRESSION	39	
-	1	1	1	1	1	1320922-1	DISC, ADJUST, INSULATION CRIMP	38	
-	1	1	1	1	1	354777-1	WIRE DISC, ASSEMBLY	37	
-	1	1	1	1	1	22480-5	SPRING, COMPRESSION	36	
-	1	1	1	1	1	690212-1	POST, RAM	35	
-	1	1	1	1	1	2-1320934-2	SUPPORT, TERMINAL	34	
-	2	2	2	2	2	1-18024-0	SCR, BTN SKT HD CAP (M4 X 20.0)	33	
-	1	1	1	1	1	18027-2	WASHER, FLAT, REG M4	32	
-	1	1	1	1	1	1-18023-2	SCR, SKT HD CAP M4 X 12.0	31	
-	1	1	1	1	1	1320908-4	SPACER, STRIP GUIDE	30	
-	1	1	1	1	1	1633073-1	STRIP GUIDE ASSEMBLY	29	
-	1	1	1	1	1	1-455888-0	SPACER, CRIMPER	28	
-	2	2	2	2	2	1-22284-0	SPRING, COMPRESSION	27	
-	1	1	1	1	1	356835-1	LEVER, DRAG RELEASE	26	
-	1	1	1	1	1	240792-1	DRAG, TERMINAL	25	
-	1	1	1	1	1	1320928-1	PLATE, STRIP GUIDE	24	
-	1	1	1	1	1	980371-4	SCR, SKT HD SHLDR 5.0 DIA X 6.0	23	
-	1	1	1	1	1	690472-2	STRIPPER	22	
-	1	1	1	1	1	1-18023-1	SCR, SKT HD CAP M4 X 10.0	21	
-	4	4	4	4	4	18025-2	WASHER, SPRG LOCK, REG M4	20	
-	1	1	1	1	1	690472-1	STRIPPER	19	
-	-	-	-	-	18				
-	1	1	1	1	1	1338684-1	SHEAR HOLDER, FRONT	17	
-	-	-	-	-	16				
-	-	-	-	-	15				
-	-	-	-	-	14				
-	-	-	-	-	13				
-	1	1	1	1	1	3-22280-3	SPRING, COMPRESSION	12	
-	1	1	1	1	1	356885-4	STOP, SHEAR	11	
-	1	1	1	1	1	1320921-1	SHEAR HOLDER, FRONT, CUT	10	
-	1	1	1	1	1	462006-1	FLOATING SHEAR, FRONT	9	
1	2	2	2	1	1	1	3-1633132-4	ANVIL, COMBINATION .090	8
-	1	1	1	1	1	240641-5	SPACER	7	
-	-	-	-	-	6				
-	1	1	1	1	1	1-455889-4	DEPRESSOR, SHEAR	5	
-	1	1	1	1	1	1-238011-0	BLOCK, CRIMPER SPACER	4	
1	2	2	2	1	1	1	5-1583690-5	CRIMPER, INSUL 0	3
-	1	1	1	1	1	455888-7	SPACER, CRIMPER	2	
1	2	2	2	1	1	1	4-456406-7	CRIMPER, WIRE PREMIUM	1

REV	DATE	BY	APPD	DESCRIPTION	ITEM NO
-	-	-	-	-	84
-	-	-	-	-	83
-	-	-	-	-	82
-	-	-	-	-	81
-	-	-	-	-	80
-	-	-	-	-	79
-	-	-	-	-	78
-	-	-	-	-	77
-	-	-	-	-	76
-	-	-	-	-	75
-	-	-	-	-	74

REV	DATE	BY	APPD	DESCRIPTION	ITEM NO
-	-	-	-	-	84
-	-	-	-	-	83
-	-	-	-	-	82
-	-	-	-	-	81
-	-	-	-	-	80
-	-	-	-	-	79
-	-	-	-	-	78
-	-	-	-	-	77
-	-	-	-	-	76
-	-	-	-	-	75
-	-	-	-	-	74

REV	DATE	BY	APPD	DESCRIPTION	ITEM NO
-	-	-	-	-	84
-	-	-	-	-	83
-	-	-	-	-	82
-	-	-	-	-	81
-	-	-	-	-	80
-	-	-	-	-	79
-	-	-	-	-	78
-	-	-	-	-	77
-	-	-	-	-	76
-	-	-	-	-	75
-	-	-	-	-	74

REV	DATE	BY	APPD	DESCRIPTION	ITEM NO
-	-	-	-	-	84
-	-	-	-	-	83
-	-	-	-	-	82
-	-	-	-	-	81
-	-	-	-	-	80
-	-	-	-	-	79
-	-	-	-	-	78
-	-	-	-	-	77
-	-	-	-	-	76
-	-	-	-	-	75
-	-	-	-	-	74