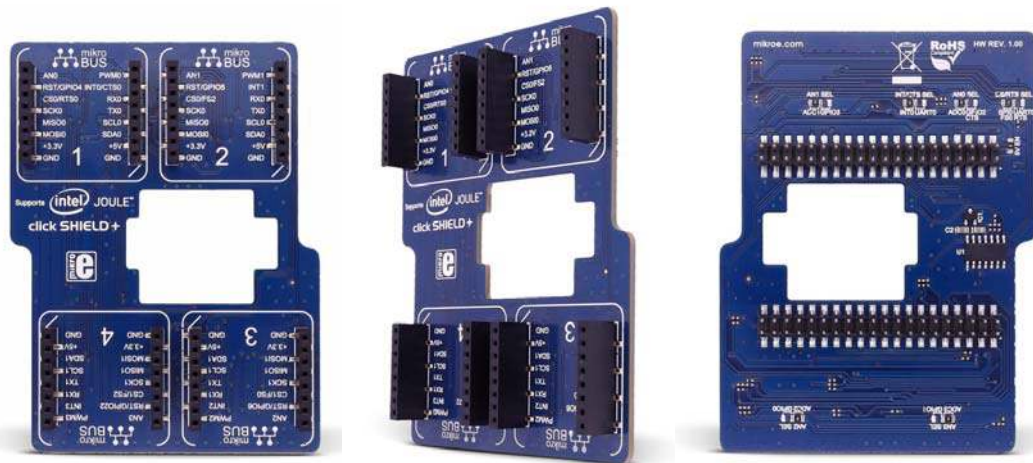


## Intel® Joule™ click SHIELD +

PID: MIKROE-2582

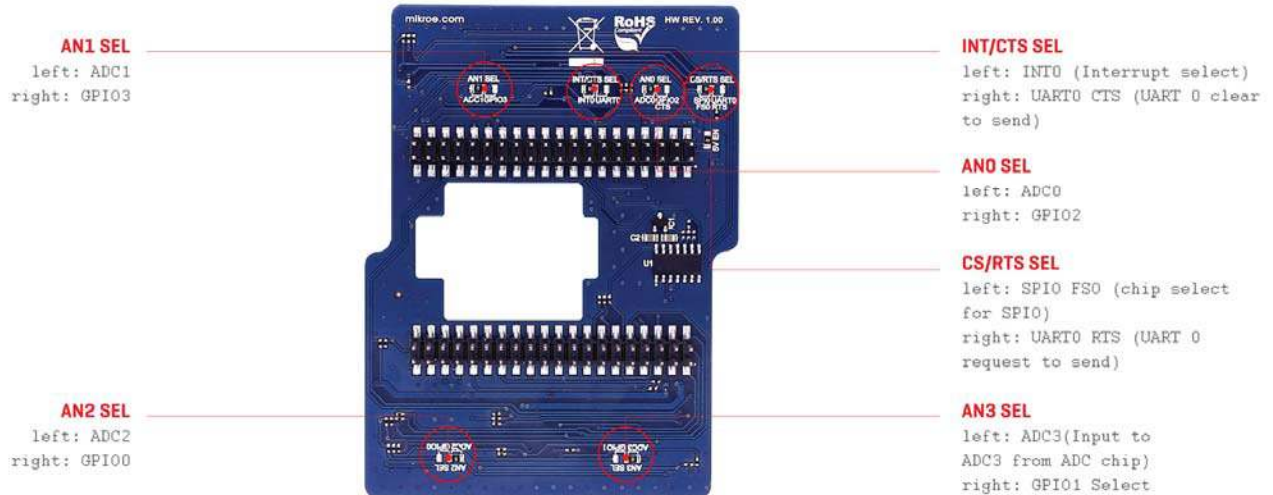


**Intel® Joule™ click SHIELD +** is an extension for Intel® Joule™ Expansion Board with **four mikroBUS™ sockets**. This click shield allows you to add more than 280 click boards™ to your project. Add displays, WiFi, ZigBee or Bluetooth transceivers, Ethernet modules, sensors, MP3 codec circuit and other features to your prototype with ease.

Click boards™ come with examples written in MikroElektronika compilers, so you will have a great base for your future projects.

The Intel® Joule™ click SHIELD + board includes the MCP3204 ADC - 4-Channel 12-Bit A/D Converters with SPI™ Serial Interface. The onboard ADC has a 2.048V reference.

## Jumper and settings



## Intel® Joule™ module

This powerful system on module (SoM) was designed to help inventors and IoT developers contribute to a new generation of robots, drones, and IoT devices that are equipped with Intel® HD Graphics, 3D modeling, object recognition, and interactive capabilities.

### Key features

- 4 mikroBUS™ sockets
- MCP3204 ADC
- 2x40 connector pins
- 3.3V and 5V power supply

### Specification

Product Type	Shield
Applications	Add click board™ connectivity to the Intel® Joule™ Expansion Board
On-board modules	Four mikroBUS™ sockets, MCP3204 ADC
Power Supply	3.3V and 5V
Compatibility	Intel® Joule™

<https://shop.mikroe.com/click/shields/intel-joule-click-shield-plus-5-4-17>