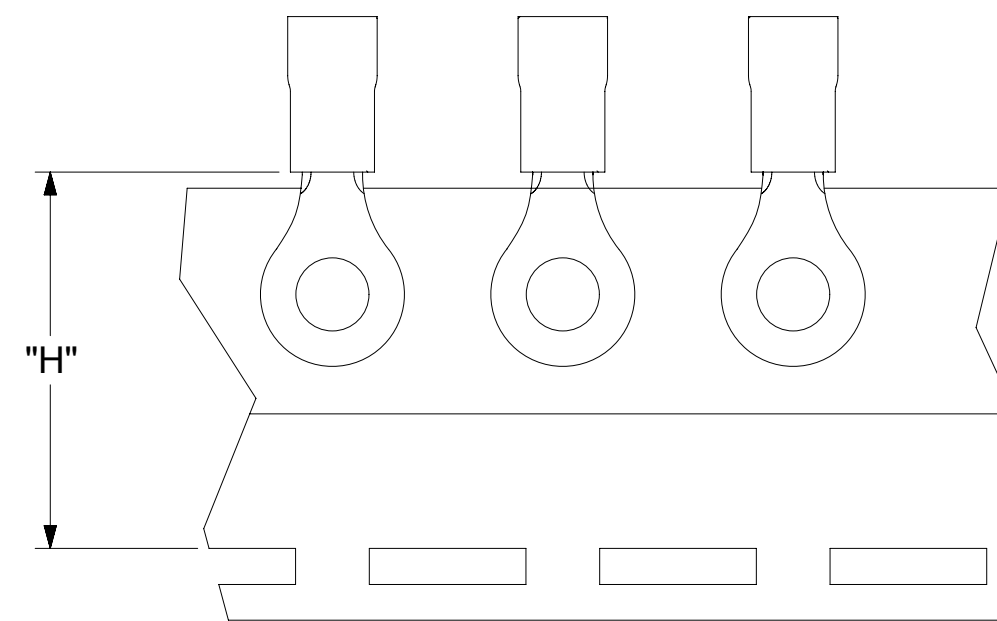
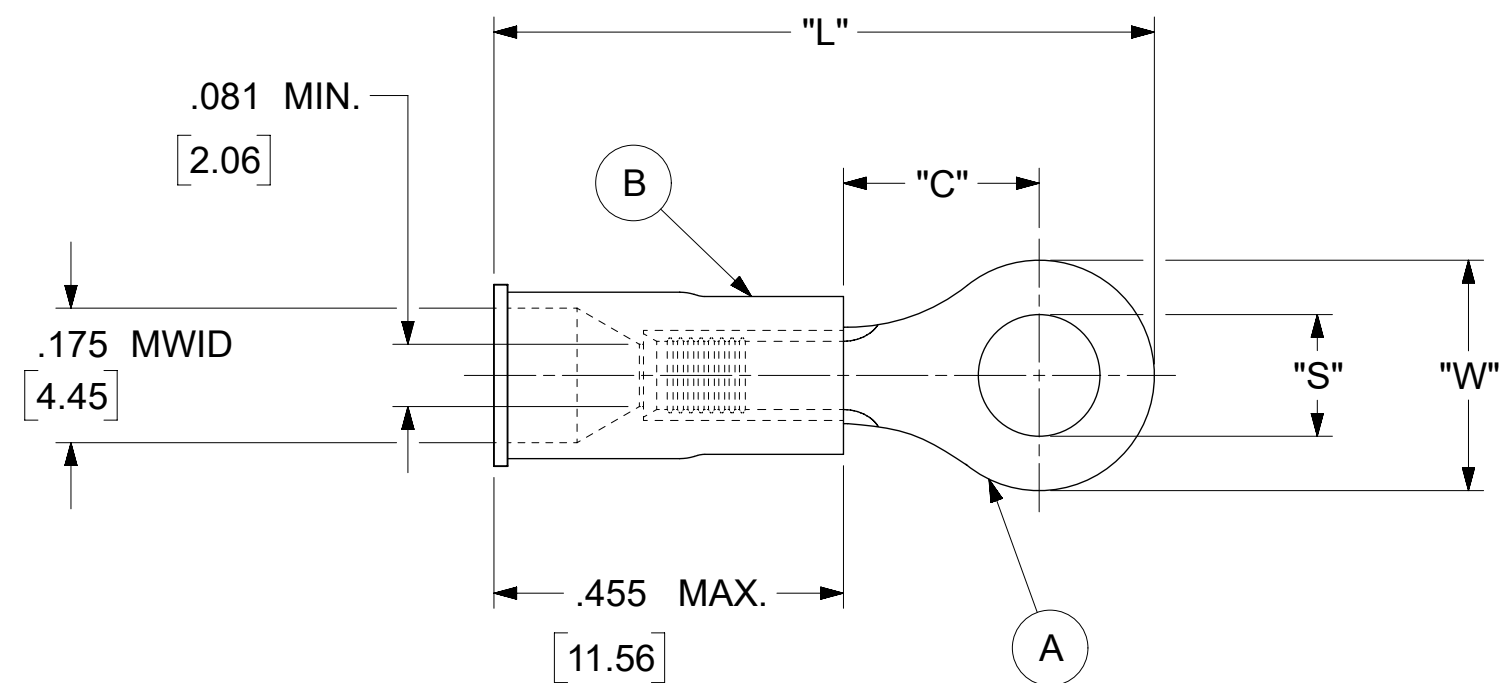


LOOSE PIECE		TAPE MOUNTED		SPECIFICATIONS						
MATERIAL NUMBER	ENGINEERING NUMBER	MATERIAL NUMBER	ENGINEERING NUMBER	STUD SIZE	"S" ±.005 [0.13]	"W" ±.010 [0.25]	"C" MIN.	"L" MAX.	"H"	STOCK ±.001 [0.025] THICKNESS
190540073	B-218-14X	---	---	14	.265 [6.73]	.534 [13.56]	.554 [14.07]	1.311 [33.30]	.980 [24.89]	.031 [.79]
190540075	B-218-38X	---	---	38	.390 [9.91]					
190540077	B-218-56X	---	---	56	.328 [8.33]					
190540080	B-223-04X	---	---	4	.119 [3.02]	.250 [6.35]	.209 [5.31]	.835 [21.21]	.980 [24.89]	.031 [.79]
190540081	B-223-06X	190540082	B-223-06XT	6	.146 [3.71]					
190540083	B-223-08X	---	---	8	.173 [4.39]					
190540086	B-225-14X	190540087	B-225-14XT	14	.265 [6.73]	.467 [11.86]	.388 [9.86]	1.112 [28.24]	.980 [24.89]	.031 [.79]
190540088	B-225-56X	---	---	56	.328 [8.33]					
190540107	B-237-04X	---	---	4	.119 [3.02]	.312 [7.92]	.285 [7.24]	.926 [23.52]	.980 [24.89]	.031 [.79]
190540108	B-237-06X	190540109	B-237-06XT	6	.146 [3.71]					
190540110	B-237-08X	190540112	B-237-08XT	8	.173 [4.39]					
190540113	B-237-10X	190540115	B-237-10XT	10	.198 [5.03]					
190540117	B-239-06X	---	---	6	.146 [3.71]	.342 [8.69]	.310 [7.87]	.971 [24.66]	---	.031 [.79]
190540118	B-239-08X	---	---	8	.173 [4.39]					
190540119	B-239-10X	---	---	10	.198 [5.03]					



NOTES:

- MATERIAL:
  - (A). RING TONGUE TERMINAL: COPPER
  - PLATING: ELECTRO-TIN (.0003 MIN.)
  - (B). INSULATION: MOLDED PVC (BLUE)
- MWID: MAXIMUM WIRE INSULATION DIAMETER
- WIRE SIZE: 16 -14 AWG  
1.0 -2.5 MM<sup>2</sup>
- ALL DIMENSIONS IN INCHES/[MM].
- PARTS ARE ROHS COMPLIANT.
- DIMS. SHOWN ARE FOR REFERENCE ONLY.

THIS DRAWING CONTAINS INFORMATION THAT IS PROPRIETARY TO MOLEX ELECTRONIC TECHNOLOGIES, LLC AND SHOULD NOT BE USED WITHOUT WRITTEN PERMISSION									
DIMENSION UNITS		SCALE		CURRENT REV DESC: OBSOLETE PART NUMBERS AS PER PCN#512131				<b>molex</b>	
INCH/MM		NTS							
GENERAL TOLERANCES (UNLESS SPECIFIED)				EC NO: 727779		2022/09/30		RING TONGUE TERMINAL INSULKRIMP 200-SERIES	
4 PLACES		±		DRWN: ANIKES1		2022/11/29			
3 PLACES		±		CHK'D: GGA		2022/11/29		PRODUCT CUSTOMER DRAWING	
2 PLACES		± 0.13 ± 0.01		APPR: GGA		2022/11/29			
1 PLACE		± 0.25 ±		INITIAL REVISION:				DOCUMENT NUMBER	
0 PLACES		±		DRWN: KO					
ANGULAR TOL		± 0.5 °		APPR: JMACNEIL		1984/10/25		DOC TYPE	
DRAFT WHERE APPLICABLE MUST REMAIN WITHIN DIMENSIONS		THIRD ANGLE PROJECTION		DRAWING		SERIES		DOC PART	
		C-SIZE		19054		2019/07/01		REVISION	
MATERIAL NUMBER		CUSTOMER		SHEET NUMBER		PSD		000 A2	
SEE TABLE		GENERAL MARKET		1 OF 1					