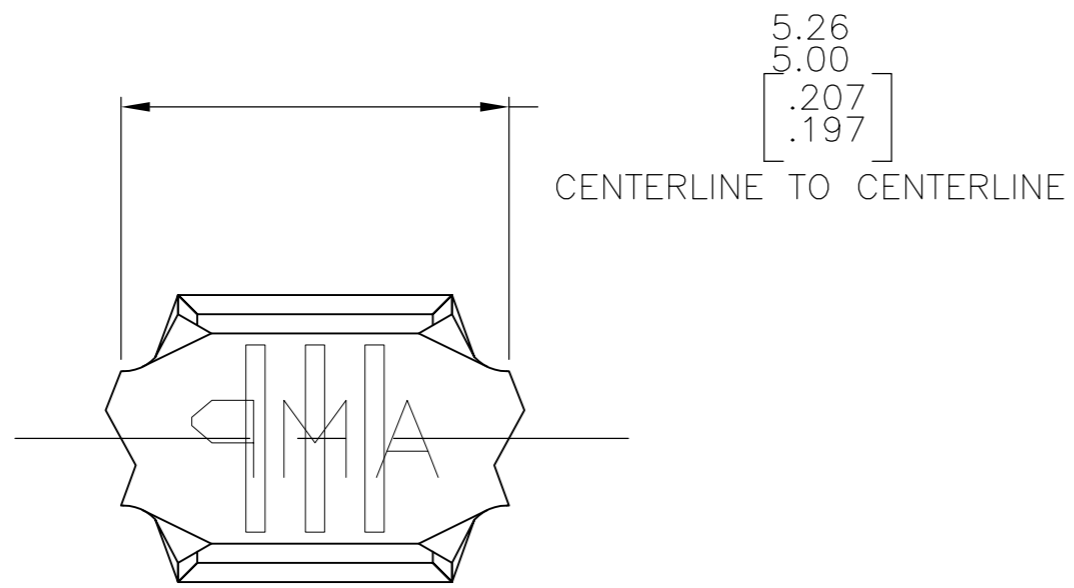
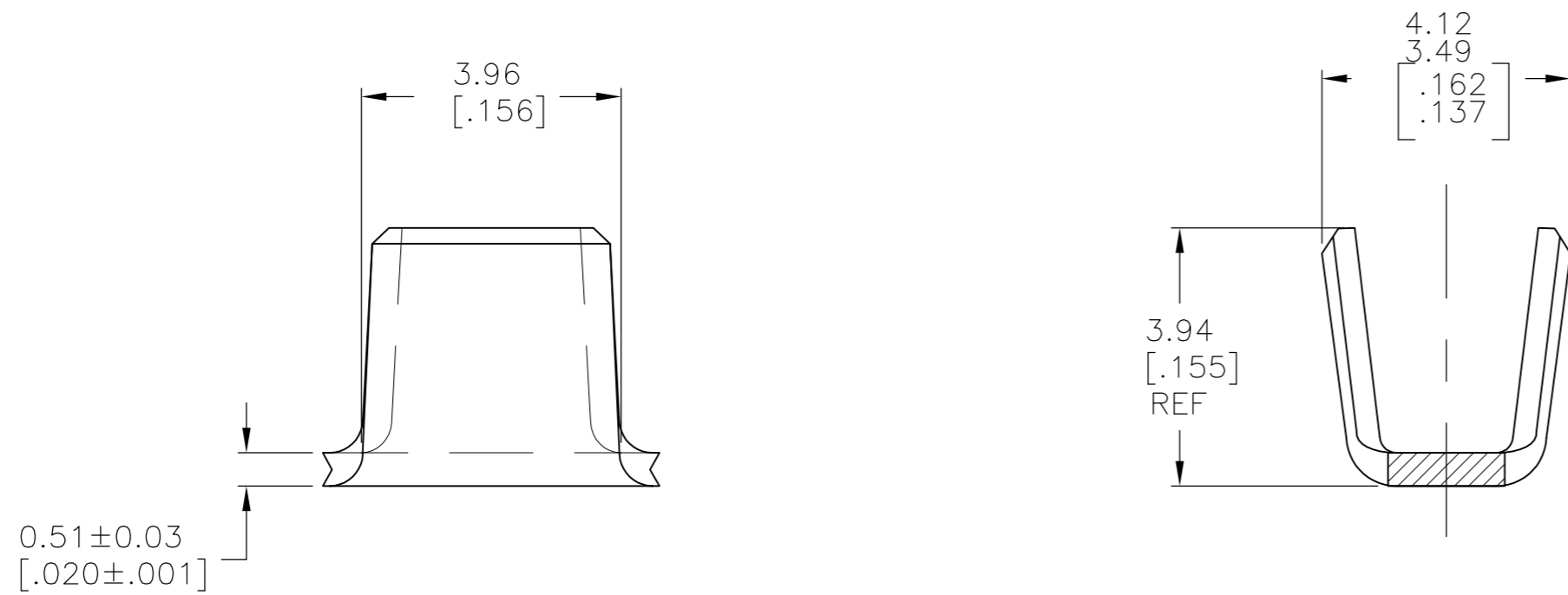


THIS DRAWING IS UNPUBLISHED. RELEASED FOR PUBLICATION  
 © COPYRIGHT - By - ALL RIGHTS RESERVED.

LOC	DIST	REVISIONS			
P	LTR	DESCRIPTION	DATE	DWN	APVD
AF	50	K3	REVISED PER ECR-11-006644	05APR11	HMR GJ



- 1 CONTINUOUS STRIP ON REELS.
- 2 TIN PLATE OVER COPPER UNDERPLATE.
- 3 WIRE RANGE FOR NEW APPLICATIONS: 1.27-2.38mm<sup>2</sup>[2500-4700 CMA] (WIRE RANGE APPROVED FOR APPLICATIONS IMPLEMENTED PRIOR TO 2005: 2000-5300 CMA).
- 4 OBSOLETE PARTS: OBSOLETE CIS STREAMLINING PER D.RENAUD/D.SINISI
- 5 CRIMP WIDTH:3.05[.120] F TYPE. CRIMP HEIGHT IN INCHES (+/-0.002)=(TOTAL CMA OF WIRES + 12240)/220000.



FINISH	MATERIAL	WIRE RANGE	PART NUMBER
-	H02 COPPER NICKEL	3	61492-3
2	082 BRASS	3	61492-2
-	082 BRASS	3	61492-1
THIS DRAWING IS A CONTROLLED DOCUMENT.		DWN MICHAEL S. FEHER 06MAR2000	
DIMENSIONS: mm [INCHES]		CHK STEVE HEADER 06MAR2000	
TOLERANCES UNLESS OTHERWISE SPECIFIED:		APVD STEVE HEADER 06MAR2000	
0 PLC ± -		NAME	
1 PLC ± -		STE	
2 PLC ± 0.25[.010]		TE Connectivity	
3 PLC ± -		NAME	
4 PLC ± -		STEVE HEADER	
ANGLES ± -		PRODUCT SPEC	
FINISH		APPLICATION SPEC	
SEE TABLE		114-2088	
		SIZE CAGE CODE DRAWING NO	
		A2 00779 C-61492	
		RESTRICTED TO	
		CUSTOMER DRAWING	
		SCALE 10:1 SHEET 1 of 1 REV K3	