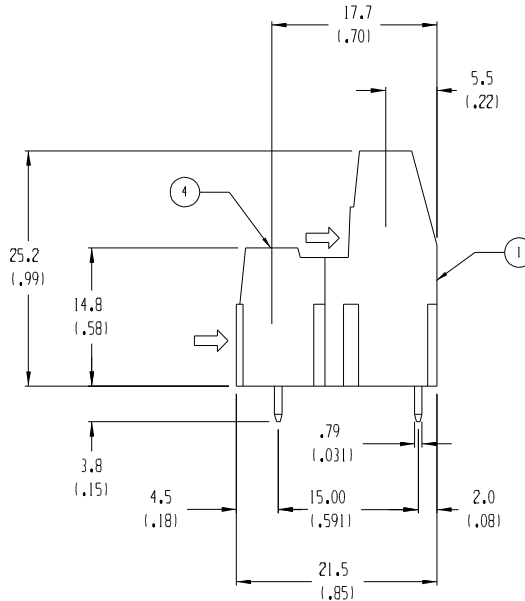
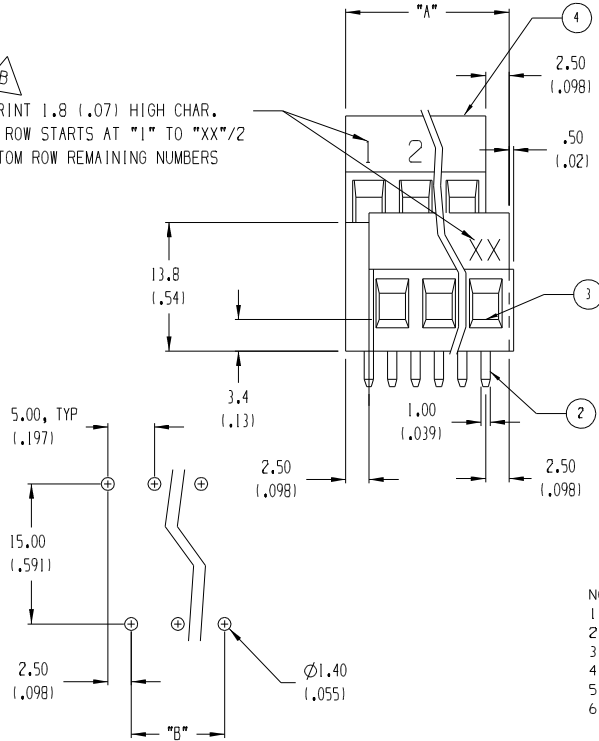


6 CIRCUIT SHOWN

NO. OF CIRCUITS "XX"	DIM. "A"	DIM. "B"	MATERIAL NO.	MATERIAL NO. LOA IMPRINT
04	12.5 (1.491)	5.00 (1.197)	398900604	
06	17.5 (1.691)	10.00 (1.394)	398900606	
08	22.5 (1.891)	15.00 (1.591)	398900608	
10	27.5 (1.108)	20.00 (1.787)	398900610	398920610
12	32.5 (1.28)	25.00 (1.984)	398900612	
14	37.5 (1.48)	30.00 (1.181)	398900614	
16	42.5 (1.67)	35.00 (1.378)	398900616	
18	47.5 (1.87)	40.00 (1.575)	398900618	
20	52.5 (2.07)	45.00 (1.772)	398900620	
22	57.5 (2.26)	50.00 (1.969)	398900622	
24	62.5 (2.46)	55.00 (2.165)	398900624	
26	67.5 (2.66)	60.00 (2.362)	398900626	
28	72.5 (2.85)	65.00 (2.559)	398900628	
30	77.5 (3.05)	70.00 (2.756)	398900630	
32	82.5 (3.25)	75.00 (2.953)	398900632	
34	87.5 (3.44)	80.00 (3.150)	398900634	
36	92.5 (3.64)	85.00 (3.346)	398900636	
38	97.5 (3.84)	90.00 (3.543)	398900638	
40	102.5 (4.04)	95.00 (3.740)	398900640	
42	107.5 (4.23)	100.00 (3.937)	398900642	
44	112.5 (4.43)	105.00 (4.134)	398900644	
46	117.5 (4.63)	110.00 (4.331)	398900646	
48	122.5 (4.82)	115.00 (4.528)	398900648	

IMPRINT 1.8 (1.07) HIGH CHAR.
TOP ROW STARTS AT "1" TO "XX"/2
BOTTOM ROW REMAINING NUMBERS



- NOTES:
 1. MATERIAL: SEE TABLE
 2. FINISHES: SEE TABLE
 3. PRODUCT SPECIFICATION: NOT REQUIRED
 4. PACKAGING: NOT REQUIRED
 5. MATES WITH: NONE
 6. "XX" REFERS TO THE QUANTITY OF CIRCUITS.

ITEM	QTY.	DESCRIPTION	MATERIAL	FINISH
4	XX	SCREW, M3, SLOTTED	BRONZE	NICKEL
3	XX	CAGE CLAMP	BRASS	NICKEL
2	XX	TERMINAL, PC	PHOSPHOR BRONZE	HOT TIN DIP
1	1	INSULATOR	POLYAMIDE	BLACK

EC NO. ECN 4242
 DRWN: RIK 9-23-05
 CH: K4
 APPR:

QUALITY SYMBOLS
 MAJOR
 CRITICAL
 SPC
 S

GENERAL TOLERANCES: (UNLESS SPECIFIED)
 mm INCH
 4 PLACES ±.0015
 3 PLACES ±.038 ±.005
 2 PLACES ±.13 ±.01
 1 PLACE ±.3
 ANGULAR: ±2°
 DRAFT WHERE APPLICABLE MUST REMAIN WITHIN DIMENSIONS

SCALE 2:1
 DESIGN UNITS mm INCH
 THIRD ANGLE PROJECTION
 DRAWN BY & DATE R. KEMP 12-4-01
 CHECKED BY & DATE P. WALTZ 12-4-01
 APPROVED BY & DATE L. ROTHHAUS 12-4-01
 CAD FILENAME 8922XX.PRT

PROJECT NO. N/A
 DIMENSIONS: mm INCH mm ONLY INCH ONLY
 SHT REV
 REVISE ON CAD ONLY
 TITLE: 5.00mm EUROSTYLE MID, TWO LEVEL FIXED BLOCK
 MOLEX INCORPORATED
 MATERIAL NO. SEE CHART
 DRAWING NO. SD-39890-006
 SHEET NO. 1 OF 1
 THIS DRAWING CONTAINS INFORMATION THAT IS PROPRIETARY TO MOLEX INCORPORATED AND SHOULD NOT BE USED WITHOUT WRITTEN PERMISSION.
 SIZE B