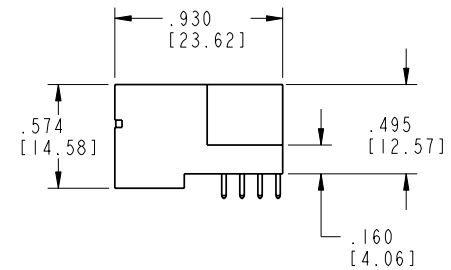
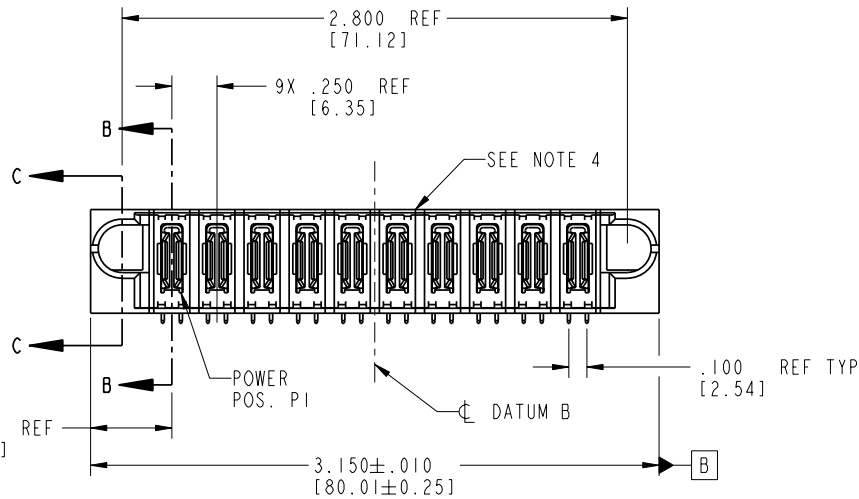
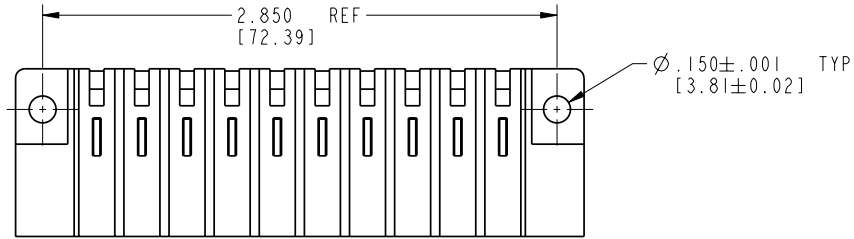


Tous droits strictement réservés. Reproduction ou communication à des tiers interdite sans quelque forme que ce soit sans autorisation écrite du propriétaire. Propriété de c FCI. Droits de reproduction FCI.



All rights strictly reserved. Reproduction or issue to third parties in any form whatever is not permitted without written authority from the proprietor. Property of FCI. Copyright FCI.

PRODUCT NO.	POWER											
	E1	P1	P2	P3	P4	P5	P6	P7	P8	P9	P10	E2
51628-001 NOTE ③		PA	PA	PA	PA	PA	PA	PA	PA	PA	PA	



CODE	DIM "M" MATING LENGTH	CONTACT TYPE
PA	N/A [N/A]	POWER

mat'l code				tolerances unless otherwise specified		CUSTOMER	
SEE NOTE 2				.XX±.01/0.X±0.3		COPY	
lir	ecn no.	dr	date	linear	.XXX±.005/0.XX±0.13	projection	
A	V90695	CHB	03-15-99	angles	.XXX±.0020/0.XXX±0.051	0°±2°	
B	V11177	CGD	04-10-01	dr	C.RAROT 03-15-99	INCH/MM	
C	V12541	DAI	12-05-01	enrg	J.BROWN 03-15-99	scale	
D	DG06-0156	RYAN	04/07/06	chr	J.BROWN 03-15-99	1:1	
				appd	J.BROWN 03-15-99		
sheet index	revision	D	D	D	D		
	sheet	1	2	3	4		

www.fciconnect.com		title		10P	
product family		PwrBlade		code	
size		dwg no		213	
A		51628		sheet	
				1 of 4	

cage code 22526

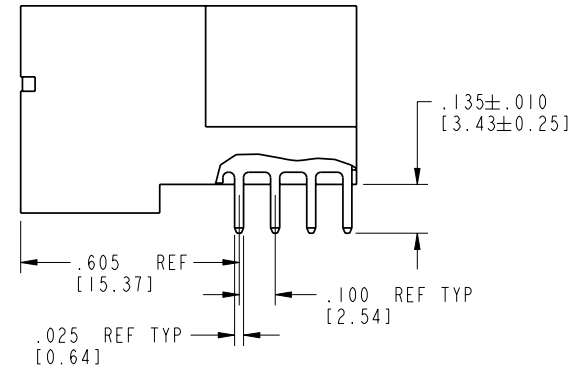
Pro/E

Tous droits strictement reserves. Reproduction ou communication a des tiers interdite sous quelque forme que ce soit sans autorisation ecrite du proprietaire. Propriete de c FCI. Droits de reproduction FCI.

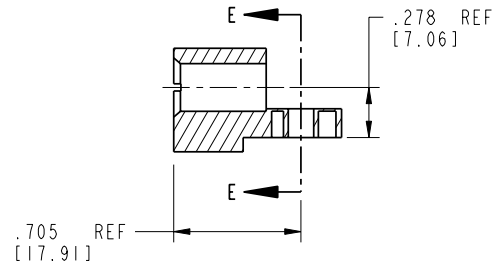


All rights strictly reserved. Reproduction or issue to third parties in any form whatever is not permitted without written authority from the proprietor. Property of FCI. Copyright FCI.

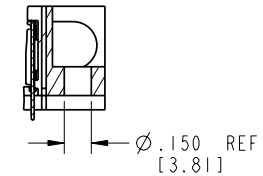
PRODUCT NUMBER  
51628-001--  
NOTE (3)



BROKEN-OUT SECTION B-B  
SCALE 2:1



SECTION C-C



PARTIAL SECTION E-E

mat'l code SEE NOTE 2				tolerances unless otherwise specified		CUSTOMER		FCI	
lfr	ecn no.	dr	date	linear	.XX±.01/0.X±0.3	COPY		www.fciconnect.com	
D				linear	.XXX±.005/0.XX±0.13	projection		title 10P	
				linear	.XXX±.002/0.XXX±0.051	INCH/MM		RIGHT ANGLE SOLDER HEADER	
				angles	0°±2°	scale 1:1		product family PwrBlade code	
				dr	C.RAROT 03-15-99	A		size 213	
				engr	J.BROWN 03-15-99	51628		sheet	
				chr	J.BROWN 03-15-99			2 of 4	
				appd	J.BROWN 03-15-99				
sheet index		revision sheet							

cage code 22526

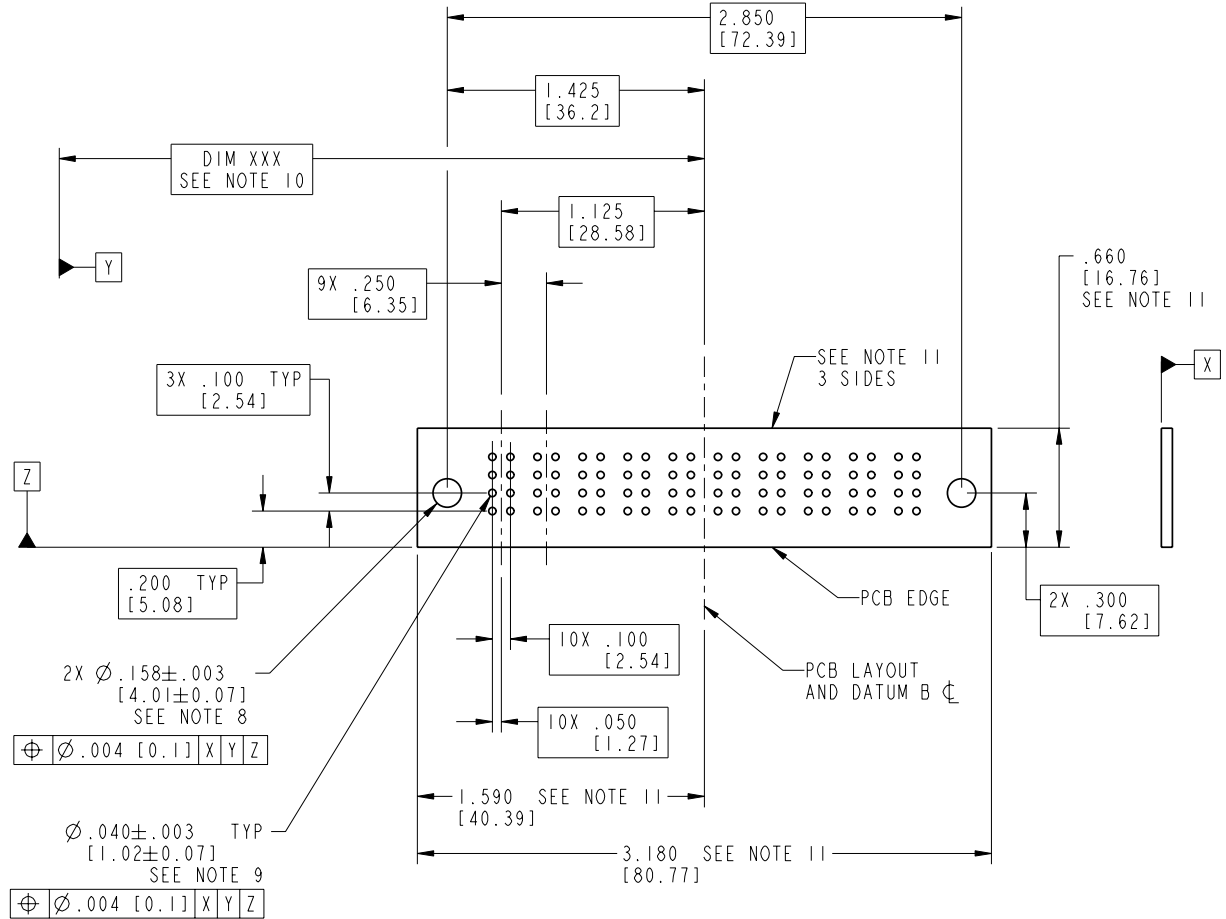
Pro/E

Tous droits strictement reserves. Reproduction ou communication a des tiers interdite sous quelque forme que ce soit sans autorisation écrite du propriétaire. Propriete de c FCI. Droits de reproduction FCI.



All rights strictly reserved. Reproduction or issue to third parties in any form without is not permitted without written authority from the proprietor. Property of FCI. Copyright FCI.

PRODUCT NUMBER  
51628-001--  
NOTE ③



RECOMMENDED PCB LAYOUT

mat'l code				SEE NOTE 2		tolerances unless otherwise specified		CUSTOMER		FCI	
lfr	ecn no.	dr	date	linear	.XX±.01/0.X±0.3	projection	COPY		www.fciconnect.com		
D					.XXX±.005/0.XX±0.13		INCH/MM		title 10P		
				angles	.XXX±.002/0.XXX±0.051		scale 1:1		RIGHT ANGLE SOLDER HEADER		
				dr	0°±2°		A		product family PwrBlade		code
				enrg	C.RAROT 03-15-99		A		size		213
				chr	J.BROWN 03-15-99		A		dwg no		sheet
				appd	J.BROWN 03-15-99		A		51628		3 of 4
sheet index		revision sheet									

cage code 22526

Pro/E

Tous droits strictement reserves. Reproduction ou communication a des tiers interdite sous quelque forme que ce soit sans autorisation écrite du propriétaire. Propriete de c FCI. Droits de reproduction FCI.



All rights strictly reserved. Reproduction or issue to third parties in any form whatever is not permitted without written authority from the proprietor. Property of FCI. Copyright FCI.

PRODUCT NUMBER  
51628-001\_\_  
NOTE ③

NOTES:

1. DIMENSIONS AND TOLERANCES ARE IN ACCORDANCE WITH ASME Y14.5M, 1994 UNLESS OTHERWISE SPECIFIED.

CONNECTOR NOTES:

- ② HOUSING MATERIAL: UL 94 V-0 GLASS FILLED HIGH-TEMP THERMOPLASTIC  
POWER CONTACT MATERIAL: COPPER ALLOY  
SIGNAL PIN MATERIAL: COPPER ALLOY
- ③ PLATING:  
SEE PRINT 10064183 FOR PLATING SPEC OF 51628-001; 51628-001LF
- ④ MANUFACTURER'S NAME, P/N, AND DATE CODE TO APPEAR ON THIS SURFACE.

5. PRODUCT SPECIFICATION GS-12-149.  
APPLICATION SPECIFICATION BUS-20-067.

6. PACKAGED IN TRAYS.

PCB NOTES:

7. ALL HOLE DIAMETERS ARE FINISHED HOLE SIZE.

- ⑧ MOUNTING HOLES, WHERE APPLICABLE, ARE UNPLATED.
- ⑨  $\varnothing .0453 \pm .0010$  [1.151  $\pm$  0.025] DRILLED HOLES PLATED WITH  
.0003 [0.008] MIN SnPb OVER .001 [0.03]  
TO .003 [0.08] Cu PLATING TO ACHIEVE  
 $\varnothing .040 \pm .003$  [1.02  $\pm$  .07] HOLE.

⑩ "DIM XXX" TO BE DETERMINED BY THE CUSTOMER.

⑪ CONNECTOR KEEP-OUT ZONE.

mat'l code				SEE NOTE 2		tolerances unless otherwise specified		CUSTOMER		FCI	
lfr	ecn no.	dr	date	linear	.XX±.01/0.X±0.3	COPY		www.fciconnect.com		title	
D					.XXX±.005/0.XX±0.13	projection		10P		RIGHT ANGLE SOLDER HEADER	
				angles	.XXX±.002/0.XXX±0.051	INCH/MM		product family		PwrBlade	
				dr	0°±2°	scale		size		code	
				enrg	C.RAROT 03-15-99	1:1		dwg no		213	
				chr	J.BROWN 03-15-99			51628		sheet	
				appd	J.BROWN 03-15-99			A		4 of 4	
sheet index		revision sheet									

cage code 22526

Pro/E