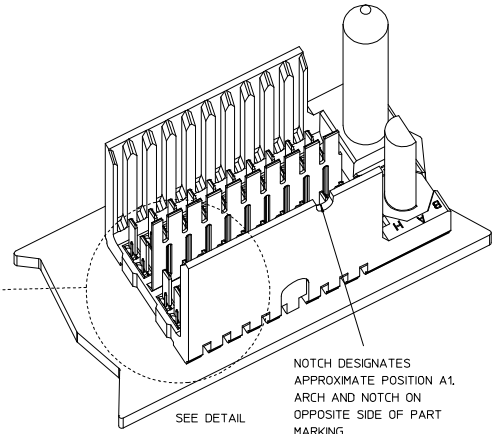
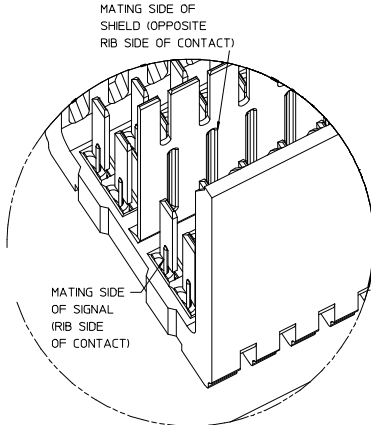
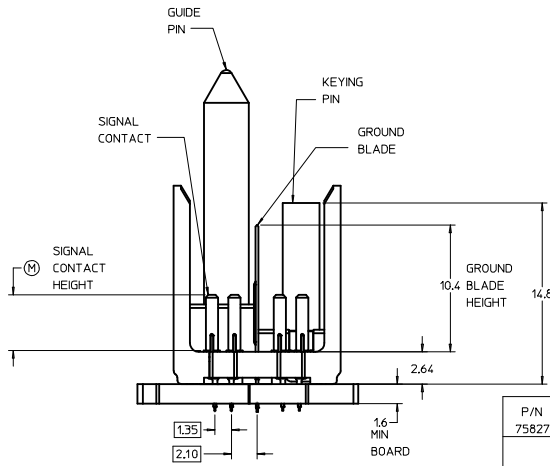
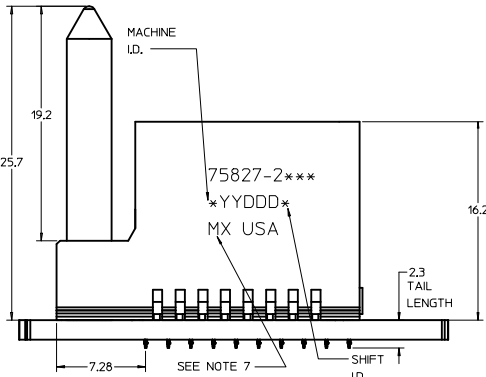


THE PRIMARY CARTON WITH A LABEL STATING "ELV AND ROHS COMPLAINT" IS LEAD FREE. CARTONS WITHOUT THIS LABEL MAY CONTAIN LEAD.

BACKPLANE HOLE PATTERN (COMPONENT SIDE-10 POS SHOWN)

ROW AG & EG RECOMMENDED FOR ALL APPLICATIONS. THESE ROWS SHOULD BE CONNECTED TO GROUND.



NOTCH DESIGNATES APPROXIMATE POSITION A1. ARCH AND NOTCH ON OPPOSITE SIDE OF PART MARKING.

| PART NUMBER TABLE |    |       |       |                                 |
|-------------------|----|-------|-------|---------------------------------|
| ASSY PART NO.     | K  | L     | P     | TOTAL NO. OF DIFFERENTIAL PAIRS |
| 75827-21**        | 9  | 16.65 | 24.78 | 20                              |
| 75827-22**        | 24 | 44.40 | 52.53 | 50                              |

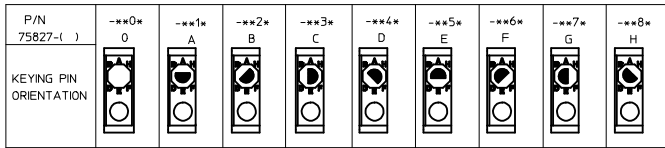
- NOTES:
1. MATERIAL: HOUSING - LIQUID CRYSTAL POLYMER (LCP) GLASS-FILLED. UL 94V-0. COLOR - GRAY. SIGNAL CONTACT AND GROUND BLADE - HIGH PERFORMANCE COPPER ALLOY.
  2. FINISHES: SELECTIVE GOLD (Au) ON CONTACT AREA. SELECTIVE MATTE TIN (Sn) ON PCB TAILS. NICKEL (Ni) OVERALL.
  3. THIS PART CONFORMS TO MOLEX PRODUCT SPECIFICATION PS-75221-999.
  4. FOR MIXED CONTACT MATING LENGTHS CONSULT MOLEX FOR AVAILABILITY. CONTACT PAIRS MUST BE THE SAME LENGTH.
  5. FOR SPECIFIC PART NUMBER AND MATING INFORMATION PLEASE REFER TO CHART.
  6. PACKAGE PER PK-70873-5058.
  7. EITHER MARK PART NUMBER AND DATE CODE APPROXIMATELY WHERE SHOWN OR PLACE A LABEL ON THE TUBE.
  8. OPTIONAL HOLE LOCATION FOR GROUNDED GUIDE PIN OR ADDITIONAL GUIDE PIN SUPPORT. FOR GROUNDED GUIDE, HOLE TO BE PLATED, DRILL SIZE  $\phi 2.58$  PAD SIZE  $\phi 5.50$
  9. THESE PARTS CONFORM TO MOLEX COSMETIC SPECIFICATION PS-45499-002 CLASS B.
  10. MAPS (MOLEX ADVANCED PLATING SYSTEM).

MODULE ORIENTATION LEFT = 2

KEYING ORIENTATION COLUMN

0 = NONE 1-10 COL  
1 = A 2-25 COL  
2 = B ETC...

| PIN LENGTH DIM "M" | GOLD (Au) THICKNESS micrometers |
|--------------------|---------------------------------|
| 0-3.55 mm          | 0.25 (MAPS)                     |
| 1-4.55 mm          |                                 |
| 2-5.55 mm          |                                 |
| 3-3.55 mm          |                                 |
| 4-4.55 mm          | 0.76                            |
| 5-5.55 mm          |                                 |
| 7-3.55 mm          |                                 |
| 8-4.55 mm          | 1.27                            |
| 9-5.55 mm          |                                 |



LEAD-FREE PLATING

| <b>REV TO LEAD-FREE</b><br>IEC NO: UICP2013-0690<br>DRAWINGS: CHYD/MOLFE 2012/09/05<br>APPROVALS: APPR:SMILLER 2012/12/05     | QUALITY SYMBOLS<br>$\nabla=0$<br>$\nabla=0$<br>$\nabla=0$ | GENERAL TOLERANCES (UNLESS SPECIFIED):<br><table border="1"> <tr> <th></th> <th>mm</th> <th>INCH</th> </tr> <tr> <td>4 PLACES</td> <td>±0.25</td> <td>±0.010</td> </tr> <tr> <td>3 PLACES</td> <td>±0.30</td> <td>±0.012</td> </tr> <tr> <td>2 PLACES</td> <td>±0.25</td> <td>±0.010</td> </tr> <tr> <td>1 PLACE</td> <td>±0.38</td> <td>±0.015</td> </tr> <tr> <td>0 PLACE</td> <td>±</td> <td>±</td> </tr> </table> |        | mm               | INCH | 4 PLACES | ±0.25 | ±0.010 | 3 PLACES | ±0.30 | ±0.012 | 2 PLACES | ±0.25 | ±0.010 | 1 PLACE | ±0.38 | ±0.015 | 0 PLACE | ± | ± | DIMENSION STYLE<br><b>MM ONLY</b><br>DRAWN BY: NMARTIN<br>DATE: 2005/07/01<br>CHECKED BY: JMYCZEK<br>DATE: 2005/07/01<br>APPROVED BY: SREED<br>DATE: 2005/07/01 | SCALE: 5:1<br>DESIGN UNITS: METRIC<br>THIRD ANGLE PROJECTION |
|---|---|---|--------|------------------|------|----------|-------|--------|----------|-------|--------|----------|-------|--------|---------|-------|--------|---------|---|---|---|--|
|   |   | mm  | INCH   |                  |      |          |       |        |          |       |        |          |       |        |         |       |        |         |   |   |   |  |
|   | 4 PLACES  | ±0.25   | ±0.010 |                  |      |          |       |        |          |       |        |          |       |        |         |       |        |         |   |   |   |  |
|   | 3 PLACES  | ±0.30   | ±0.012 |                  |      |          |       |        |          |       |        |          |       |        |         |       |        |         |   |   |   |  |
| 2 PLACES  | ±0.25   | ±0.010  |        |                  |      |          |       |        |          |       |        |          |       |        |         |       |        |         |   |   |   |  |
| 1 PLACE   | ±0.38   | ±0.015  |        |                  |      |          |       |        |          |       |        |          |       |        |         |       |        |         |   |   |   |  |
| 0 PLACE   | ±   | ±   |        |                  |      |          |       |        |          |       |        |          |       |        |         |       |        |         |   |   |   |  |
| MATERIAL NO. SEE TABLE<br>DOCUMENT NO. SD-75827-210   |   | TITLE: GBX 2-PAIR, LF LEFT END BACKPLANE SALES ASSEMBLY   |        | SHEET NO. 1 OF 1 |      |          |       |        |          |       |        |          |       |        |         |       |        |         |   |   |   |  |
| THIS DRAWING CONTAINS INFORMATION THAT IS PROPRIETARY TO MOLEX INCORPORATED AND SHOULD NOT BE USED WITHOUT WRITTEN PERMISSION |   |   |        |                  |      |          |       |        |          |       |        |          |       |        |         |       |        |         |   |   |   |  |