

**MATERIAL**

Glass-fibre reinforced polyamide-based (PA) technopolymer, black colour, certified self-extinguishing UL-94 V0.

**PACKING RING**

Silicone directly applied onto the back side of the stator head.

**WASHER WITH ELASTIC FIXING WINGS AND SELF-TAPPING SCREWS**

Stainless steel.

**KEY**

Polyamide based (PA) technopolymer.

**ROTATION**

90°.

**IP PROTECTION**

IP 65 protection class, according to EN 60529 (see page A-18).

**STANDARD EXECUTIONS**

- **CQTF/A**: two-wing groove for key.
- **CQTF/T**: triangular groove for key.

**MAXIMUM CONTINUOUS WORKING TEMPERATURE**

130°C.

**DISASSEMBLY TOOL (TO BE ORDERED SEPARATELY)**

Code 421550 ATTREZZO CQT.FM. in AISI 304 stainless steel.

**FEATURES**

Quick assembly with steel plate thickness ranging from 1 to 2 mm latches.

**TECHNICAL DATA**

The "V0" certification in accordance with UL-94 V (Underwriters Laboratories) (see Technical data (page A-5) indicates that on a plastic test sample with specific shape and dimensions, in the vertical position, the flame is extinguished within 10 seconds, without generating incandescent drops.

**SPECIAL EXECUTIONS ON REQUEST**

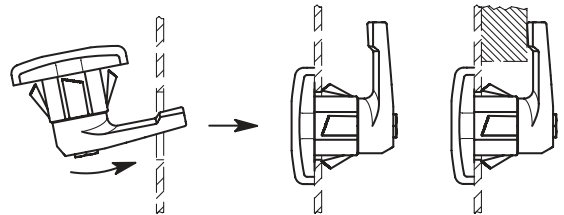
- Closing levers in zinc-plated steel.
- Latches and keys supplied separately.

**ASSEMBLY INSTRUCTIONS**

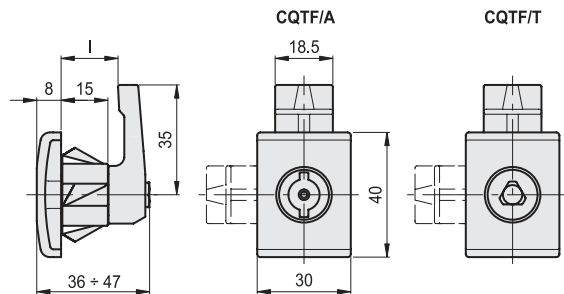
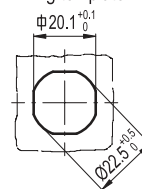
The latch is inserted in the mounting hole of the door on the lever side (see picture) until the wings of the elastic washer snap in, ensuring complete fastening.

The latches are supplied with assembled lever for faster mounting. Where needed, the latch can be disassembled from the inside of the door by means of a disassembling tool (to be ordered separately).

Conversion Table	
1 mm = 0.039 inch	
mm	inch
18	0.71
20	0.79
22	0.87
25	0.98
30	1.18



Drilling template



**CQTF/A**

**METRIC**

Code	Description	l	⚖
421261	CQTF/A-FM-35-18-AE-V0	18	25
421262	CQTF/A-FM-35-20-AE-V0	20	26
421263	CQTF/A-FM-35-22-AE-V0	22	27
421264	CQTF/A-FM-35-25-AE-V0	25	29
421265	CQTF/A-FM-35-30-AE-V0	30	34

**CQTF/T**

**METRIC**

Code	Description	l	⚖
421266	CQTF/T-FM-35-18-AE-V0	18	25
421267	CQTF/T-FM-35-20-AE-V0	20	26
421268	CQTF/T-FM-35-22-AE-V0	22	27
421269	CQTF/T-FM-35-25-AE-V0	25	29
421270	CQTF/T-FM-35-30-AE-V0	30	34



Latches