

NEO CRUCIBLE

3D Printers for Industry

Creality Sermoon D1 Industrial Grade FDM 3D Printer

Print Volume
22,568 cm³



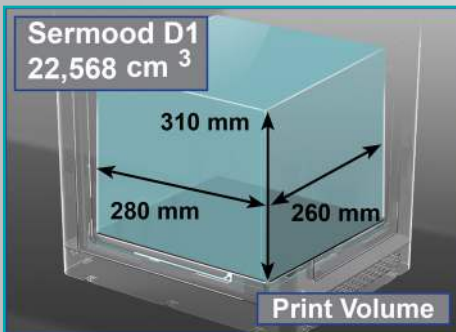
Industrial Grade Customer Support

- Warranty & Repair Support
- Replacement Parts in Stock
- Technical Support & Consulting

Industrial Grade Material Capabilities

- Fully Enclosed for Temperature Stability
- Max Hotbed Temperature: 100°C (212°F)
- Max Nozzle Temperature: 250°C (482°F)
- Designed for PLA, TPU, PETG

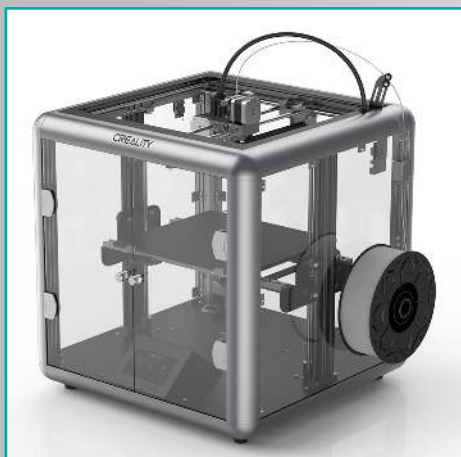
Sermood D1
22,568 cm³



Max Print Volume

22,568 Cubic cm (cm³) (1383 Cubic Inches)

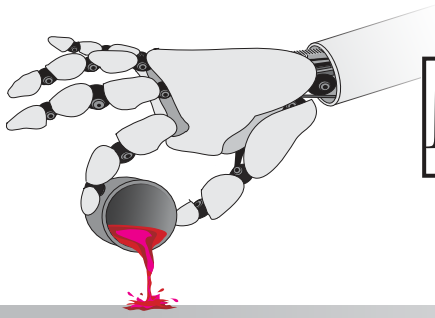
- X Dimension: 280 mm (11.0 Inches)
- Y Dimension: 260 mm (10.2 Inches)
- Z Dimension: 310 mm (12.2 Inches)



Industrial Grade Applications

- What ifs...
- Prototypes
- Test Fixtures
- Production Fixtures
- Concept Justification
- Packaging Evaluations
- Product Shape Alternatives
- Finished Goods Production

Under
\$700
Ask for a
Quote
sales@neocrucible.com



NEO CRUCIBLE

3D Printers for Industry

A Division of Lodestone Group

Sermoon D1 Specifications

Master Process Chip: ATMEGA 2560

Whisper Quiet for Office Environments

Power Loss-Recovery ● Filament Run-Out Sensor

4.3 Color Touch Screen ● File Transfer via SD Card

Power Supply Rating: 115/230 Volts AC - 24 Volts DC

Printer Size: 500 x 500 x 590 mm (20.0 x 20.2 x 21.0 Inches)

Shipping Carton: 590 x 590 x 410 mm (23.2 x 23.2 x 26.1 Inches)

Gross Weight: 26.5 Kg (58 lbs) ● Net Weight: 20.5 Kg (45.2 lbs)

Print Nozzle Diameter: 0.4 mm ● Filament Diameter: 1.75 mm

Max Print Temperature: 250°C ● Max Hot Bed Temp: 100°C (212°F)

Layer Thickness: 0.1 to 0.3 mm (.008 inches) ● Print Accuracy: +/- 0.1 mm



Neo Crucible

Sermoon D1 is Engineered for Materials up to 250°C

Filament Characteristics

| | Group 1 Filaments | | Group 2 Filaments | | | Group 3 Filaments | | | | |
|----------------|-------------------|-----------------|-------------------|--------------|--------------|-------------------|---------------|-----------------|--------------------|-----------------|
| Brand Material | Creality CR-PLA | Creality CR-TPU | Creality CR-PETG | Creality ABS | PolyLite ASA | PolyMax PC | PolyMax PC-FR | PolyMide PC/ABS | PolyMide Nylon 6/6 | PolyMide PA6-GF |
| Description | Versatile | Flexible | Versatile | Strong | Strong | Useful | Special | Tough | Tough | Tough |
| Colors | Many | Many | Many | Some | Some | Limited | Limited | Limited | Limited | Gray |
| Ease of Use | 9 | 8 | 7 | 6 | 5 | 5 | 5 | 5 | 5 | 4 |
| Print Temp | >190°C | >210°C | >230°C | >250°C | >250°C | >260°C | <260°C | >260°C | >280°C | >280°C |
| Durability | 4 | 7 | 5 | 4 | 3 | 9 | 8 | 10 | 8 | 10 |
| Heat Resist | 3 | 2 | 6 | 7 | 7 | 8 | 8 | 8 | 9 | 10 |
| Rigidity | 5 | 1 | 5 | 6 | 7 | 7 | 9 | 7 | 7 | 10 |
| Weather | 3 | 7 | 4 | 4 | 9 | 5 | 5 | 5 | 4 | 4 |
| | | | | | | Reinforced | UL94-VO | Blend | | Glass Fill |

Creality Pro Line-Up

Ask for Volume Discounts

CR-5 Pro

Up To 260°C

Print Volume 25,650 cm

CR-5 Pro H

Up To 300°C

Print Volume 25,650 cm

CR-3040 Pro

Up To 280°C

Print Volume 36,000 cm³

CR-5060 Pro

Up To 300°C

Print Volume 150,000 cm³

www.neocrucible.com ● 4769 E Wesley Drive ● Anaheim CA 92807 ● (888) 831-9336

Creality Authorized USA Distributor and Repair Facility