

6

5

4

3

2

1

**MATERIAL SPECIFICATIONS:**

Housing: Nylon-6, UL-94V-0 rated, color black  
Contact / Terminals: Brass. Tin plated

**MECHANICAL SPECIFICATIONS:**

Withdrawal force: 1.3 to 6.7 Kg  
Panel thickness range: 1.0 ~ 2.0 mm  
Solderability: 270°C for 5 sec. max.

**ELECTRICAL SPECIFICATIONS:**

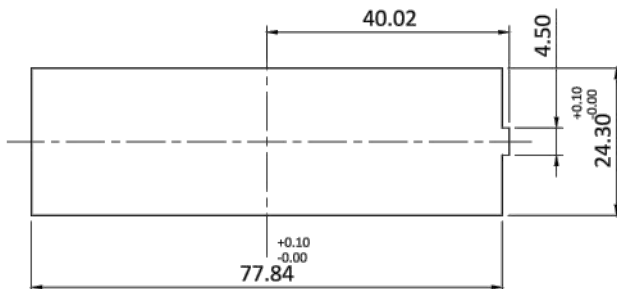
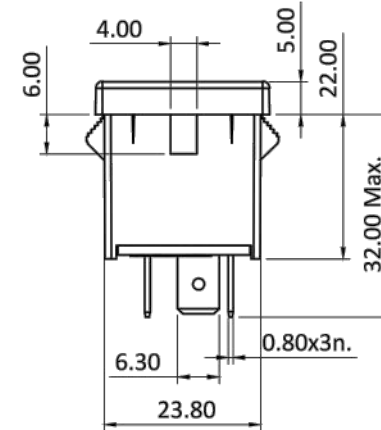
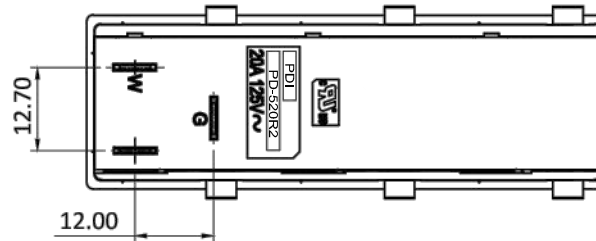
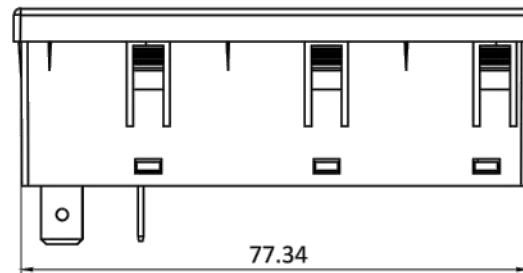
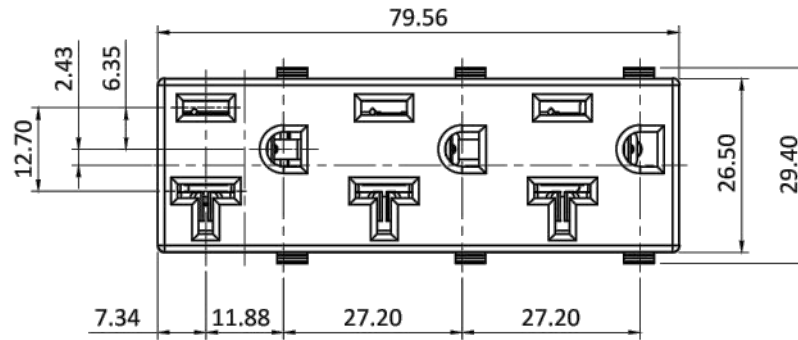
Rated current: 20A  
Rated Voltage: 125VAC  
Contact resistance ( initial ): 10 mohms max.  
Insulation resistance: 100Mohms min. @ 500VDC  
Dielectric withstanding voltage: 2000 VAC for 1 minute

**ENVIRONMENTAL SPECIFICATIONS:**

Operating temperature: 0°C to 65°C

SAFETY AGENCY APPROVAL: 

RoHS  
COMPLIANT



RECOMMENDED  
PANEL CUTOUT  
FOR 1.0mm to 2.0mm PANEL THICKNESS

TOLERANCE UNLESS OTHERWISE SPECIFIED	
X	± 1
X.X	± 0.4
X.XX	± 0.20
DRAWN BY	PB
DATE:	1/4/21
CHECK BY	-
DATE:	-
APPR BY	-
DATE:	-

<b>Power Dynamics, Inc.</b>	
Phone: 973 560-0019 Whippany, New Jersey Fax: 973 560-0076	
PART: 3 GANG NEMA 5-20R SNAP IN RECEPTACLE	
PD-520R2-3121	
SHEET 1 of 1	
SCALE: NTS	ALL DIMENSIONS FOR REFERENCE ONLY
REV:	-

REV	DATE	CHNG	CHK	APPR
	CHANGE			
	REVISIONS			

6

5

4

3

2

1