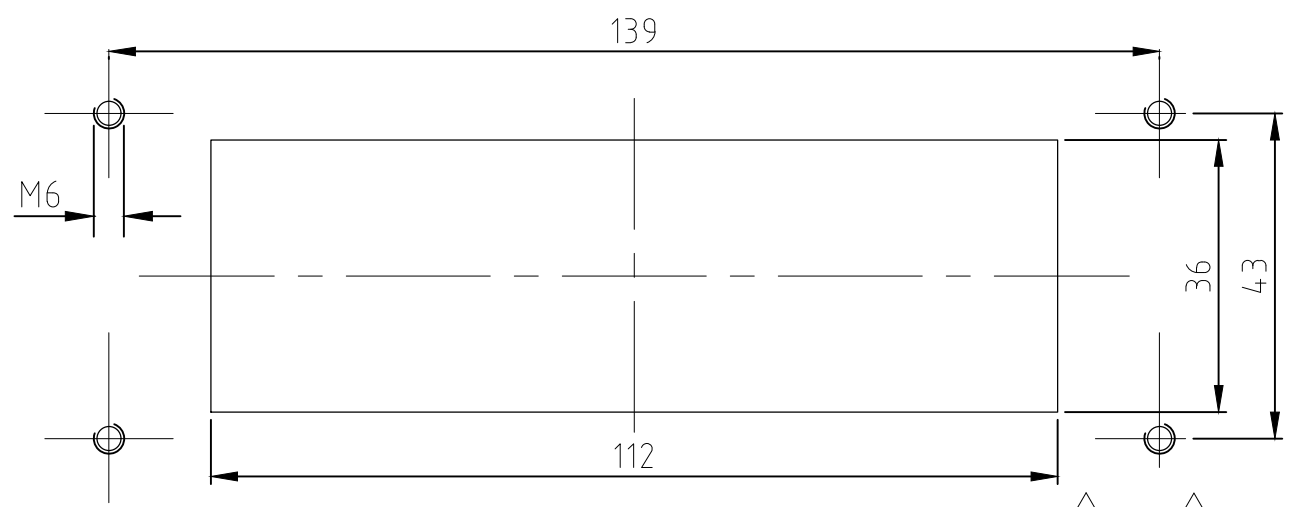
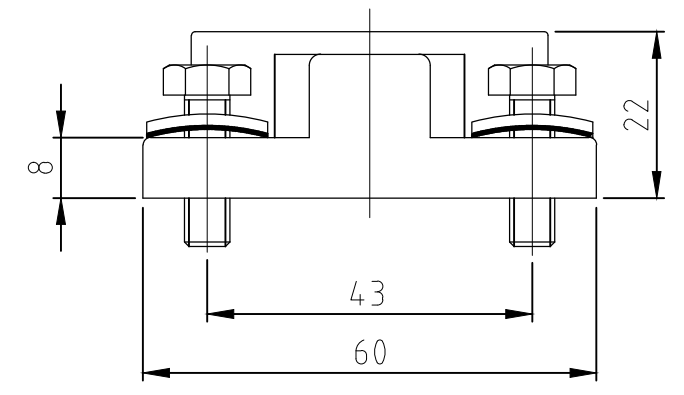
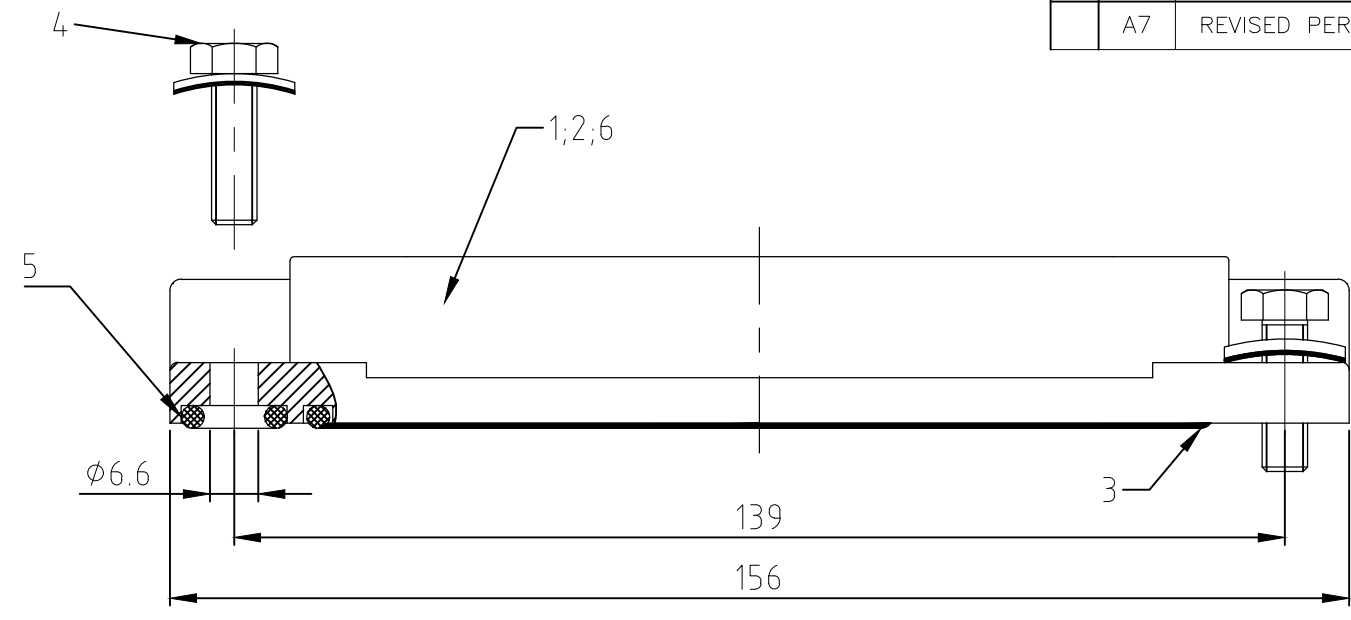


THIS DRAWING IS UNPUBLISHED. RELEASED FOR PUBLICATION
 © COPYRIGHT - TE Connectivity ALL RIGHTS RESERVED.

REVISIONS					
P	LTR	DESCRIPTION	DATE	DWN	APVD
	A7	REVISED PER ECR-17-014011	31JAN2018	SRG	MKO

Panel cut-out
 Montageausschnitt



QTY	POS.	DESCRIPTION / BENENNUNG	MATERIAL	SURFACE / OBERFLÄCHE	COLOR / FARBE	ITEM NO. Pos.	NOTES / BEMERKUNGEN
1		Anbaugehäuse EMV-K/ surface mounted housing bottom entry	aluminium/ALU	SEE NOTE 2	black/schwarz	6	Without HTS characters
4	4	O-Ring/O-ring	Neoprene		black/schwarz	5	Ø7x3
4	4	Dichtschaube mit U-Scheibe/ sealing screw with U-pane	V2A/stainl. steel	blank/even		4	M6x20
1	1	Dichtung Bg8/seal	Neoprene		black/schwarz	3	leitfähig/conductiv
	1	Anbaugehäuse EMV-K/ surface mounted housing bottom entry	aluminium/ALU	SEE NOTE 2	black/schwarz	2	
	1	Anbaugehäuse EMV/ surface mounted housing bottom entry	aluminium/ALU		grey/grau	1	

Notes:
 1 Material: Housing: aluminium diecasting alloy
 Seals: Neoprene conductiv
 2 Surface: Varnisch- grey
 - chromitAL TCP passivation
 Varnisch black
 3 Varnisch on the inside not necessarily
 4 OBSOLETE

Bemerkungen:
 1 Material: Gehäuse: Alu-Druckguß-Legierung
 Dichtungen: Neoprene leitfähig
 2 Oberfläche: Lackierung - grau
 - chromitAL TCP passivation
 Lackierung schwarz
 3 Lackierung im Gehäuseinnere ist nicht notwendig

THIS DRAWING IS A CONTROLLED DOCUMENT.

DIMENSIONS: mm

TOLERANCES UNLESS OTHERWISE SPECIFIED:
 GENERAL TOLERANCES
 n. ISO 8015
 n. ISO 2768 - mH-E
 n. DIN 16901 - 14.0

0 PLC ±
 1 PLC ±
 2 PLC ±
 3 PLC ±
 4 PLC ±
 ANGLES ±
 FINISH ±

MATERIAL 1

ORDERING TEXT / BESTELLTEXT
 EMV-K-24/64.AG.M6
 EMV-K-24/64.AG.M6
 EMV-24/64.AG.M6

DWN Schneider 19.11.2002
 CHK Schweiger 19.11.2002
 APVD
 PRODUCT SPEC
 APPLICATION SPEC
 WEIGHT 0.000000
 CUSTOMER DRAWING

19.11.2002
 NAME
 Surface Mounted Housing Bottom Entry
 Anbaugehaeuse EMV.24/64.AG.M6
 SIZE A3 CAGE CODE 00779 DRAWING NO C-1102736 RESTRICTED TO
 SCALE 1:1 SHEET 1 OF 1 REV A7

STE TE Connectivity