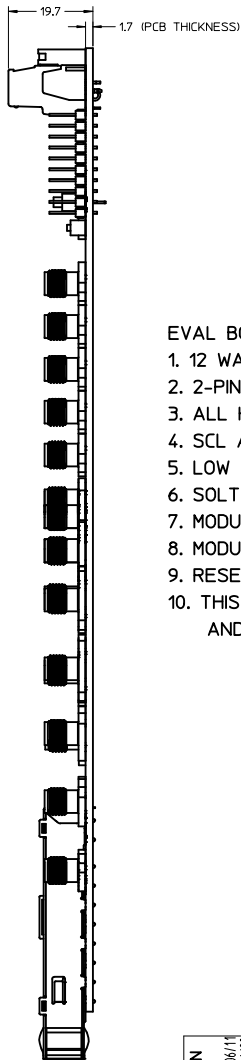
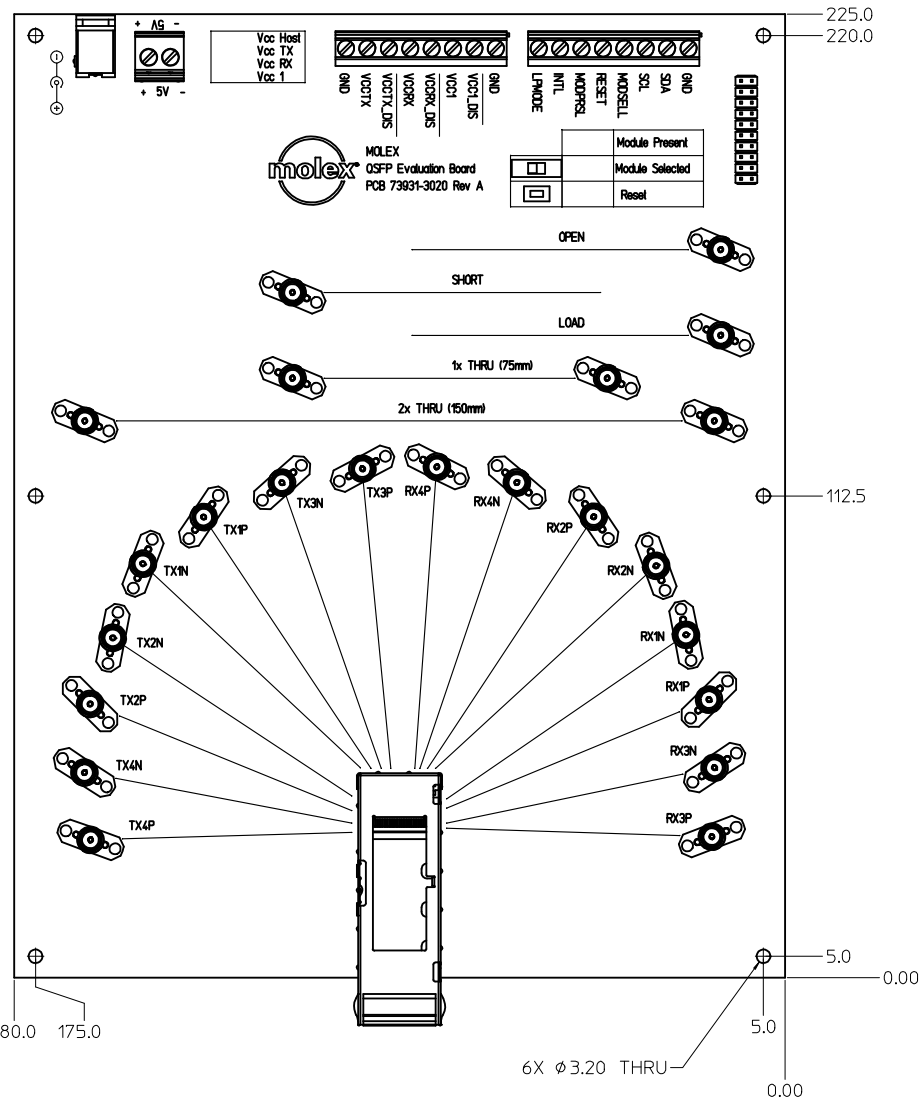


**EVAL BOARD FEATURES:**

- 12 WATT, 5V WALL TRANSFORMER INCLUDED WITH EVAL BOARD
- 2-PIN TERMINAL BLOCK AVAILABLE FOR BENCH TOP POWER SUPPLY CONNECTION
- ALL HIGH SPEED PAIRS LENGTH MATCHED.
- SCL AND SDA TERMINAL BLOCK CONNECTIONS FOR I2C CONTROL
- LOW SPEED SIGNAL AND POWER TERMINAL CONNECTIONS FOR EASY ACCESSIBILITY.
- SOLT CAL STRUCTURES (SHORT, OPEN, LOAD, 1X THRU, AND 2X THRU)
- MODULE PRESENT LED INDICATOR
- MODULE SELECT SWITCH
- RESET SWITCH
- THIS PRODUCT MEETS THE RESTRICTION OF HAZARDOUS SUBSTANCES IN ELECTRICAL AND ELECTRONIC EQUIPMENT (RoHS) DIRECTIVE (2002/95/EC).

<b>ENTER DESCRIPTION</b> IEC NO: USY2009-0558 DRAWN BY: CHRISCHY 2009/06/11 CHECKED BY: CHYKORAHMOOD 2009/06/22 APPR: RAHMOOD 2009/06/23	<b>QUALITY SYMBOLS</b> ▽=0 ▽=0	<b>GENERAL TOLERANCES (UNLESS SPECIFIED)</b>		<b>DIMENSION STYLE</b> MM ONLY	SCALE 1.75:1	DESIGN UNITS METRIC	THIRD ANGLE PROJECTION			
		4 PLACES ± mm ± INCH	3 PLACES ± --- ± ---	2 PLACES ± 0.13 ± ---	1 PLACE ± 0.25 ± ---	ANGULAR ± 1°	DRAFT WHERE APPLICABLE MUST REMAIN WITHIN DIMENSIONS	DRAWN BY: CHRISCHY 2009/06/10 CHECKED BY: GBWALZ 2009/06/10 APPROVED BY: RAHMOOD 2009/06/10	DATE:	TITLE OSFP EVALUATION BOARD
		MATERIAL NO. 739313022		DOCUMENT NO. SD-73931-3022		SHEET NO. 1 OF 1		MOLEX INCORPORATED		
		THIS DRAWING CONTAINS INFORMATION THAT IS PROPRIETARY TO MOLEX INCORPORATED AND SHOULD NOT BE USED WITHOUT WRITTEN PERMISSION								



**EVAL BOARD FEATURES:**

- 12 WATT, 5V WALL TRANSFORMER INCLUDED WITH EVAL BOARD
- 2-PIN TERMINAL BLOCK AVAILABLE FOR BENCH TOP POWER SUPPLY CONNECTION
- ALL HIGH SPEED PAIRS LENGTH MATCHED.
- SCL AND SDA TERMINAL BLOCK CONNECTIONS FOR I2C CONTROL
- LOW SPEED SIGNAL AND POWER TERMINAL CONNECTIONS FOR EASY ACCESSIBILITY.
- SOLT CAL STRUCTURES (SHORT, OPEN, LOAD, 1X THRU, AND 2X THRU)
- MODULE PRESENT LED INDICATOR
- MODULE SELECT SWITCH
- RESET SWITCH
- THIS PRODUCT MEETS THE RESTRICTION OF HAZARDOUS SUBSTANCES IN ELECTRICAL AND ELECTRONIC EQUIPMENT (RoHS) DIRECTIVE (2002/95/EC).

<b>ENTER DESCRIPTION</b> IEC NO: USY2009-0558 DRAWN BY: CHRISCHY 2009/06/11 CHECKED BY: CHYDRAHMOOD 2009/06/22 APPR: RAHMOOD 2009/06/23	<b>QUALITY SYMBOLS</b> ▽=0 ▽=0	<b>GENERAL TOLERANCES (UNLESS SPECIFIED)</b>		<b>DIMENSION STYLE</b> MM ONLY	<b>SCALE</b> 1.75:1	<b>DESIGN UNITS</b> METRIC	THIRD ANGLE PROJECTION		
		4 PLACES ±--- ±---	3 PLACES ±--- ±---	2 PLACES ±0.13 ±---	1 PLACE ±0.25 ±---	ANGULAR ± 1°	DRAFT WHERE APPLICABLE MUST REMAIN WITHIN DIMENSIONS	DRAWN BY: CHRISCHY 2009/06/10 CHECKED BY: DATE GBWALZ 2009/06/10 APPROVED BY: DATE RAHMOOD 2009/06/10	TITLE OSFP EVALUATION BOARD
		MATERIAL NO. <b>739313022</b>		DOCUMENT NO. <b>SD-73931-3022</b>		Molex <b>MOLEX INCORPORATED</b>		SHEET NO. 1 OF 1	
		THIS DRAWING CONTAINS INFORMATION THAT IS PROPRIETARY TO MOLEX INCORPORATED AND SHOULD NOT BE USED WITHOUT WRITTEN PERMISSION							