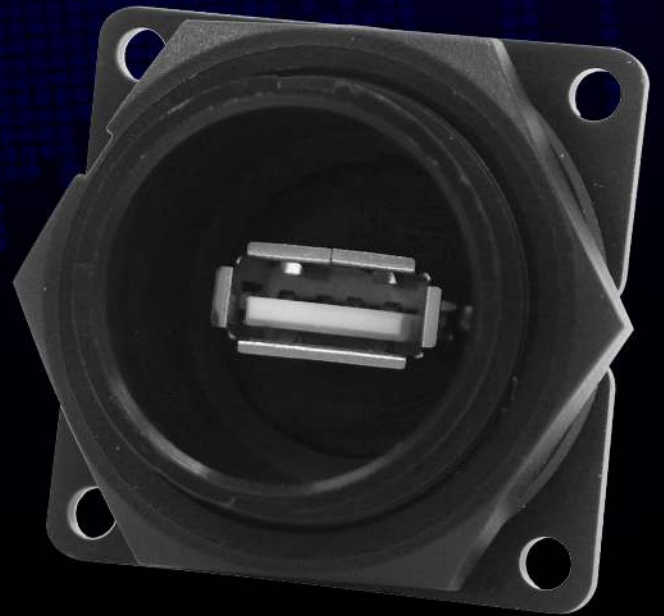


CONXALL  
**DATA-CON-X<sup>®</sup>**  
SEALED USB TYPE A  
**PANEL MOUNT  
CONNECTORS**

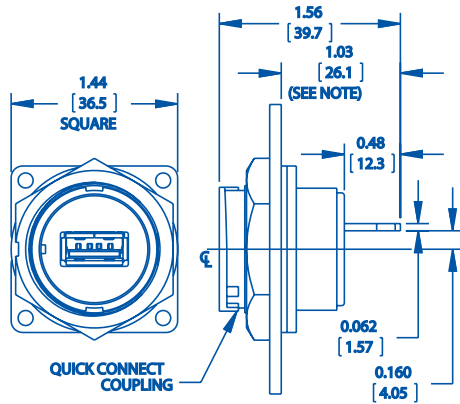


**Switchcraft<sup>®</sup>**  
**CONXALL<sup>®</sup>**

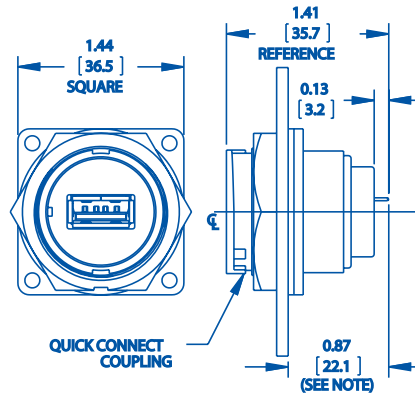
HARSH ENVIRONMENT CONNECTIVITY SOLUTIONS

## OVERALL DIMENSIONS

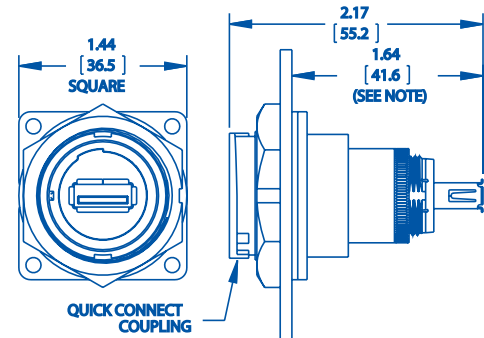
### SOLDER CUP



### PCB HEADER



### FEEDTHRU

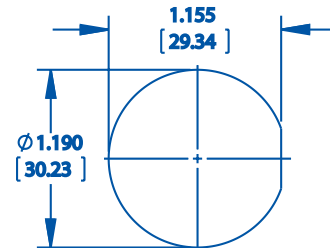


Note: Dimension does not include gasket compression.  
 Dimensions in inches [mm]. Quick connect option shown.  
 See drawings from Conxall.com for detailed dimensions

## KEY FEATURES

- PC Header, Solder Cup, and Feedthru options available
- Sealed to IP68 when mated with Data-Con-X® USB A connectors
- Also compatible with standard USB A connectors
- Optional IP68 rated cap also available (part #D24295-WA)
- Threaded or Bayonet Quick Connect coupling options
- Built from high quality thermoplastic with elastomer gasket
- Made in the USA

## RECOMMENDED PANEL CUTOUT



## OPTIONS AND PART NUMBER LOGIC



### USB PANEL MOUNT FEED-THRU CONNECTORS PART NUMBER CHART

USB FIELD INSTALLABLE PANEL HOUSING ASSEMBLY	RECEPTACLE TYPE (SEALED END)	COUPLING TYPE	RECEPTACLE TYPE (NON-SEALED END)
<b>DCP</b>	<b>USBA</b> = USB "A" 2.0	<b>B</b> = QUICK CONNECT <b>T</b> = THREADED	<b>SC</b> = Solder Cup <b>HD</b> = PCB Header <b>F</b> = USB "A" 2.0 <b>USBB</b> = USB "B" 2.0

*DCP-USBAB-\* mates with DCC-USBAB-150 or DCC-USBAB-180*  
*DCP-USBAT-\* mates with DCC-USBAT-150 or DCC-USBAT-180*