

THIS DRAWING IS UNPUBLISHED. RELEASED FOR PUBLICATION  
 © COPYRIGHT BY TYCO ELECTRONICS CORPORATION. ALL RIGHTS RESERVED.

Loc		DIST		REVISIONS			
P	LTR	DESCRIPTION	DATE	DWN	APVD		
FT	0	1	-	3/2/07	SS	CR	

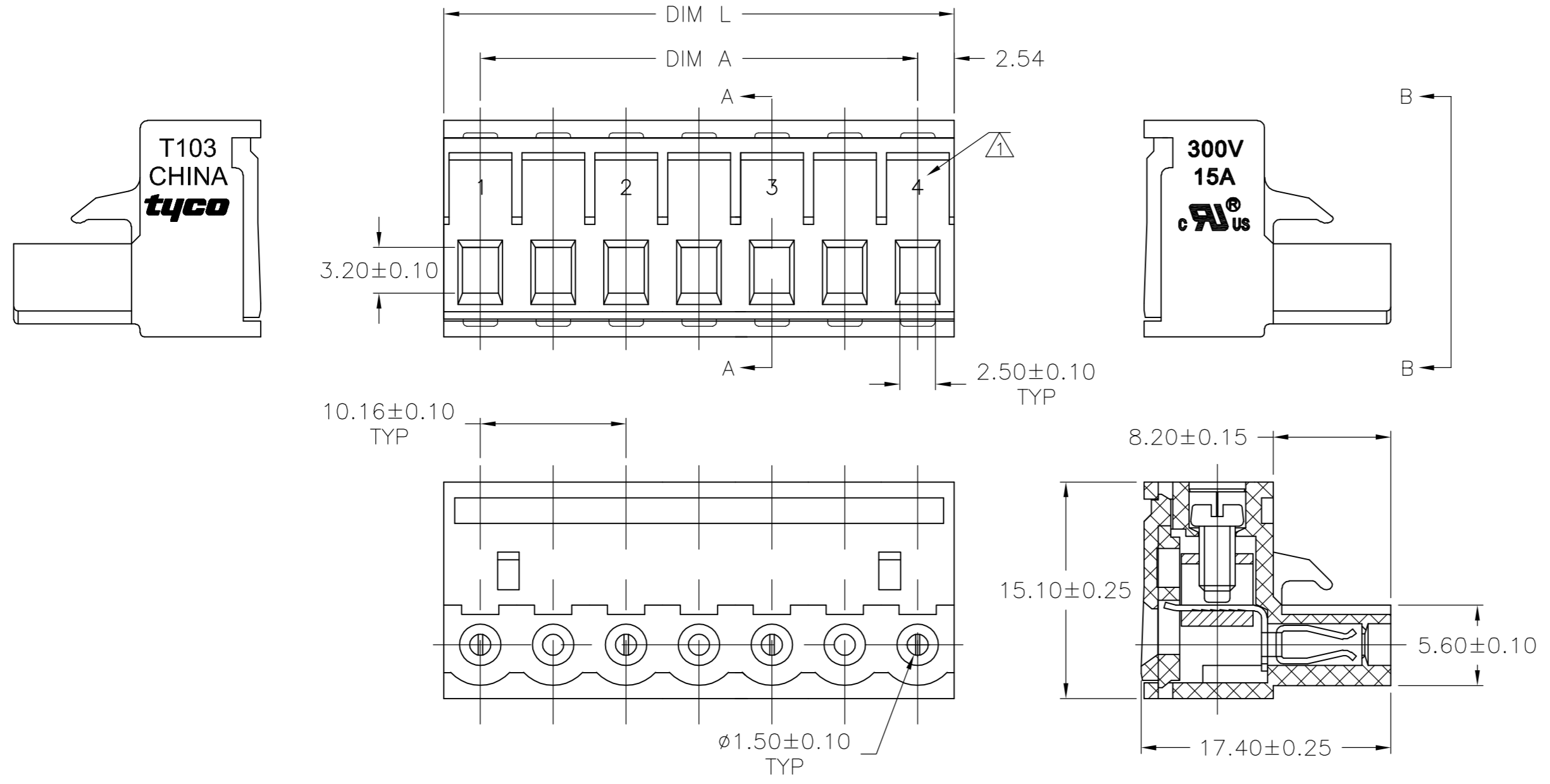
**MATERIALS:**  
 HOUSING: PA66, UL94V-0, BLACK.  
 SCREWS; M2.5, STEEL, ZINC CHROMATE.  
 CAGE: BRASS, NICKEL PLATE.  
 CLAMP: PHOS BRONZE, NICKEL PLATE.

**MECHANICAL:**  
 TIGHTENING TORQUE: 3.5 IN-LB MAX.

**ELECTRICAL:**  
 CURRENT: 15A  
 VOLTAGE: 300V  
 WITHSTAND VOLTAGE: AC1500V/ 1MIN  
 INSULATION RESISTANCE: 5000Mohm/1000V  
 WIRE RANGE: 12-28 AWG

**ENVIRONMENTAL:**  
 OPERATING TEMP.: -40° TO +105°C  
 MAX SOLDERING: +250°C, 5 SECONDS

⚠ MARKED WITH WHITE PERMANENT INK.



VIEW B-B

SECTION A-A

THIS PRINT IS  
**PRELIMINARY**  
 PRIOR TO CUSTOMER ORDER  
 CONTACT PRODUCT ENGINEERING  
 BEFORE USING THIS PRINT

SEE FIGURE	35.56±0.30	30.48±0.30	4	1-1776988-4
NOTES	DIM L	DIM A	NO OF POSN	PART NUMBER

THIS DRAWING IS A CONTROLLED DOCUMENT.		DWN S SCHLEGEL 02MAR2007	<b>tyco</b> Tyco Electronics Corporation	
DIMENSIONS: mm		CHK C RICHARD 3/2/07	Harrisburg, PA 17105-3608	
TOLERANCES UNLESS OTHERWISE SPECIFIED:		APVD C RICHARD 3/2/07	NAME TERMINAL BLOCK, R/A PLUG, 10.16mm	
0 PLC ± -		PRODUCT SPEC	-	
1 PLC ± -		APPLICATION SPEC	-	
2 PLC ± -		WEIGHT	-	
3 PLC ± -		SIZE	CAGE CODE	DRAWING NO
4 PLC ± -		MATERIAL	A2	00779
ANGLES ± 1°		FINISH	C=1776988	
CUSTOMER DRAWING		SCALE	NTS	SHEET 1 of 1
		REV	1	

1776988