

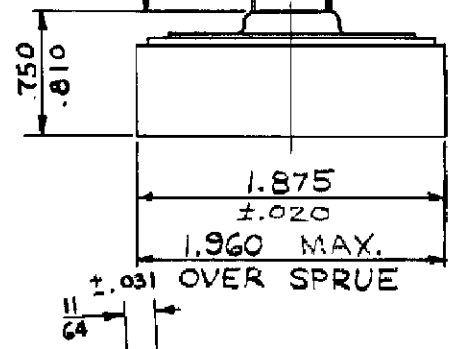
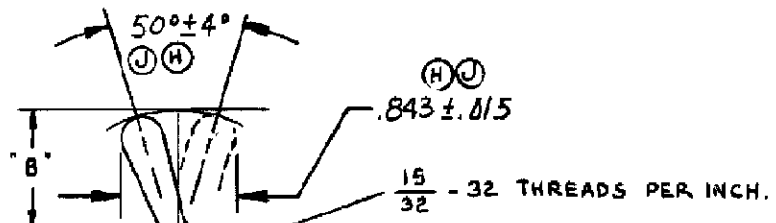
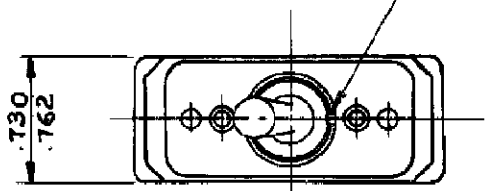
90-2200

A

A .01 DIA. OF WIRE RELEASE WAS 66EL 501
 B .070 DIA. BY 31-6630-10
 C SQUARE, TERM. HOLES WERE ROUND
 D WIRE WAS #18
 E NOTE REVISED & NOTE ADDED. TERM. HOLES CHG'D
 F NOTE FOR SINGLE POLE SWITCHES ADDED. SWR 6630-10 DIM. 375 ± .032 WAS 375 ± .032
 G ADDED 1.960 MAX. DIM. 10
 H ADDED 33° ± 4° & .675 ± .015
 J 50° ± 4° WAS 33° ± 4° & .843 ± .015 WAS .675 ± .015

REVISIONS	702A500001
TOP OF COVER	G.S. 1/24/68
ADDED 33° ± 4° & .675 ± .015	9300102
50° ± 4° WAS 33° ± 4° & .843 ± .015 WAS .675 ± .015	WL JW 11/9/89
	9300110

.068 WIDE X .038 DEEP KEYWAY
.071 .040



THESE HOLES FOR
 RELEASE TOOLS.
 RELEASE TOOLS TO BE
 OF HARDENED STEEL.
 .072 — #18 WIRE
 .083 — #16 WIRE
 .093 — #14 WIRE

3/32 SQ. HOLES TO ACCEPT #18, #16 OR #14
 STRANDED TIN DIPPED WIRE LEADS SKINNED
 .375 ± .032.
 RECOMMEND NOT INSERTING #18 WIRE
 AFTER HAVING REMOVED
 #14 WIRE.

TERMINAL LEADS
 TO BE PLUGGED IN
 THIS END OF
 SWITCH FOR
 SINGLE POLE
 SWITCHES

15/32"	.661-.733
11/32"	.668-.740
BUSHING LENGTH "A"	DIM. "B"

BY 31-6630-10
 BY 31-6630-10A122

TITLE				DIMENSIONS FOR TOOL HANDLE SWITCH			
SUP'S. NON-INTERCHANGEABLE	FIRST ASSEM. WHERE LISTED	DR.	CHK.	INDEX	YES		
	D 90-2195	G. F. LAMBOY	3-15 57	L. SOTO	529.57	NO	
BUR'D. BY NON-INTERCHANGEABLE	APR.						
CUTLER-HAMMER INC. MILWAUKEE CH NEW YORK				A		90-2200	