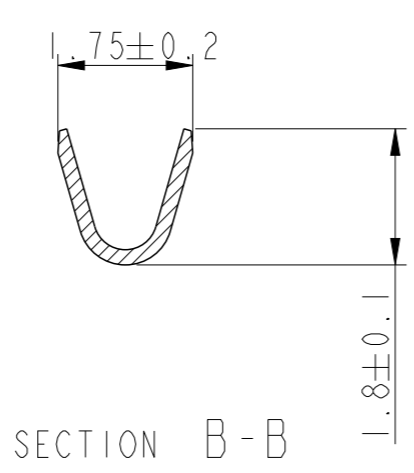
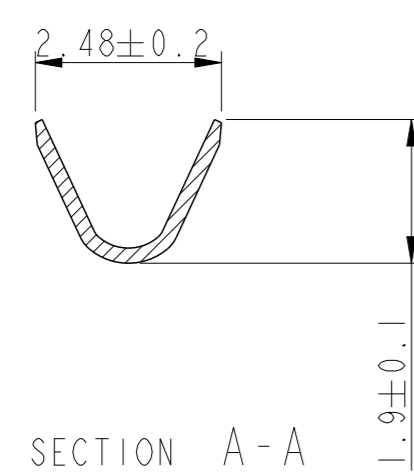
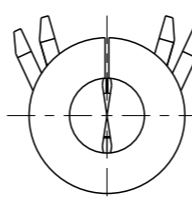
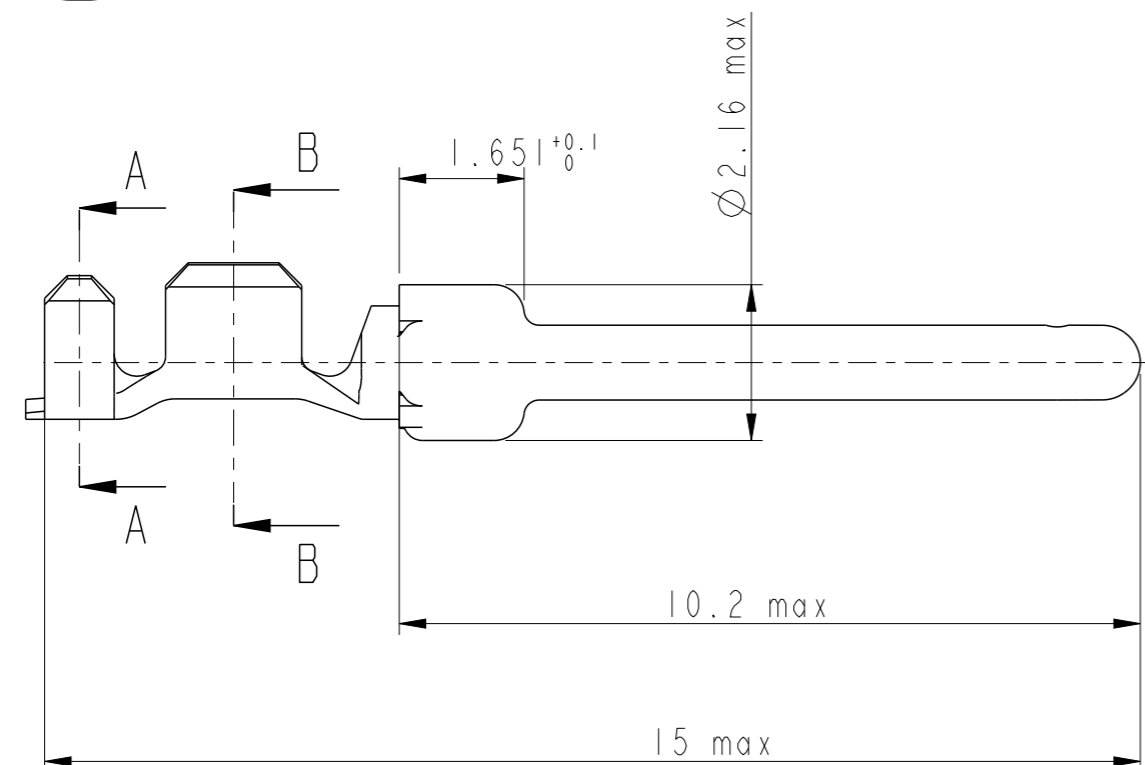
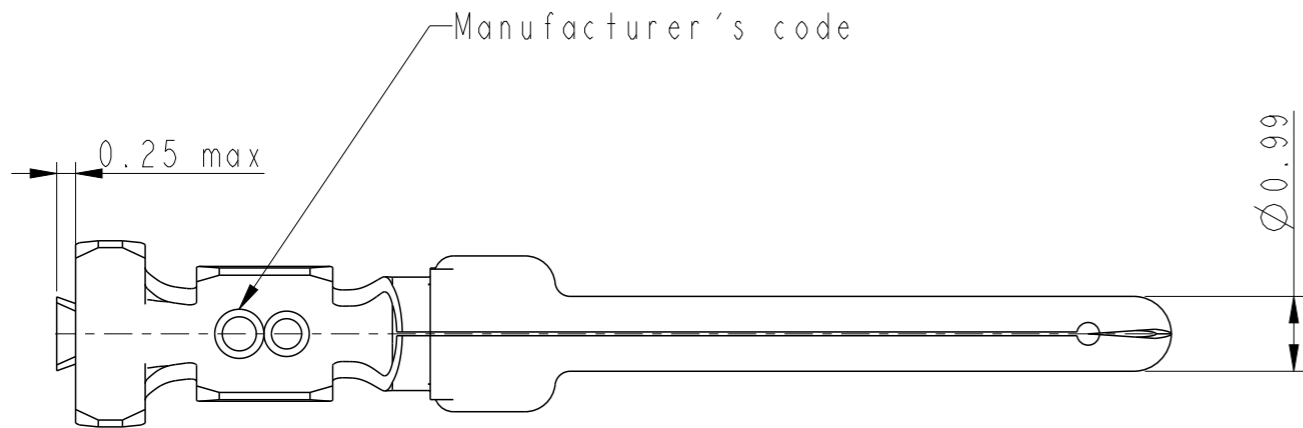


NOTES:

- 1-Material:Phosphor bronze,thickness 0.20
- 2-Finish on contact area:see table  
finish on termination:bright tin over nickel
- 3-Wire range:20 to 24 AWG
- 4-Max outer dia of wire insulator:1.73 mm
- 5-Current carrying capacity per contact:  
5.Amps max when crimped to #20 AWG  
5 Amps max when crimped to #22 AWG  
3 Amps max when crimped to #24 AWG
- 6-After 5 insertions into connector,  
contact retention must be 5 pounds axial load min
- 7-When contact is crimped to 20 AWG,the insulation  
support crimped height must be 1.78 mm max to ensure  
a proper insertion into housing
- 8-Reel should be continuous without any contacts  
missing in between
- 9-Packaging:Reel of 400 contacts

NOTE:ROHS INFORMATIONS

The LF products meet European union directives and other  
country regulations as described in GS-22-008  
Terminations plating spec:2µm Nickel min + 2µm Sn min  
Packaging spec: see GS-14-920



PULL PART	-
<b>86563005064LF</b>	Flash Au
<b>86563005064</b>	Flash Au
PART NUMBER	Plating

www.fciconnect.com		surface - ✓ ISO 1302	tolerance std ISO 406 ISO 1101	projection mm
TOLERANCES UNLESS OTHERWISE SPECIFIED				
Dr	C JARRY	28/01/97	ANGULAR	LINEAR
Eng			0° ±2°	0.X ±0.3 0.XX ±0.1 0.XXX ±0.05
Chr			Product family D-SUB	
Appr			Spec ref	
FCi		CRIMP PIN		Rev.
		#Wire 20-24 Ø1.52 max		G
catalog no		-		customer sheet 1 of 1

rev	ecn no	dr	date
E	LS06-196	MPE	27/11/2006
F	LS08-0127	MPE	2008/05/13
G	110-0070	AMR	2010-03-09
-	-	-	-
-	-	-	-
-	-	-	-
-	-	-	-

Copyright FCI.  
FCi