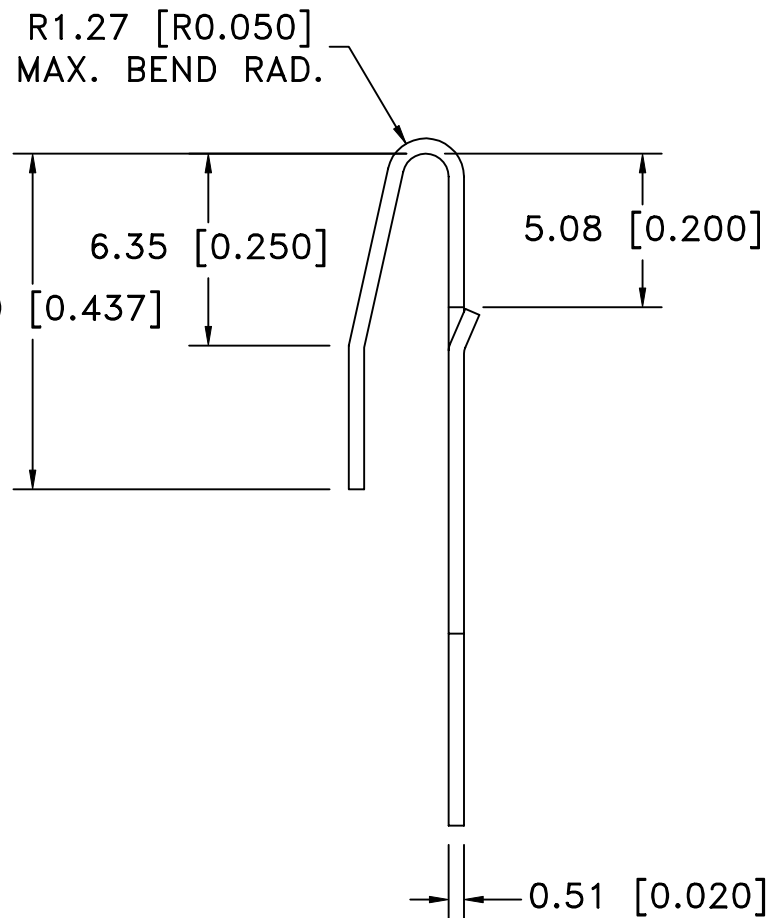
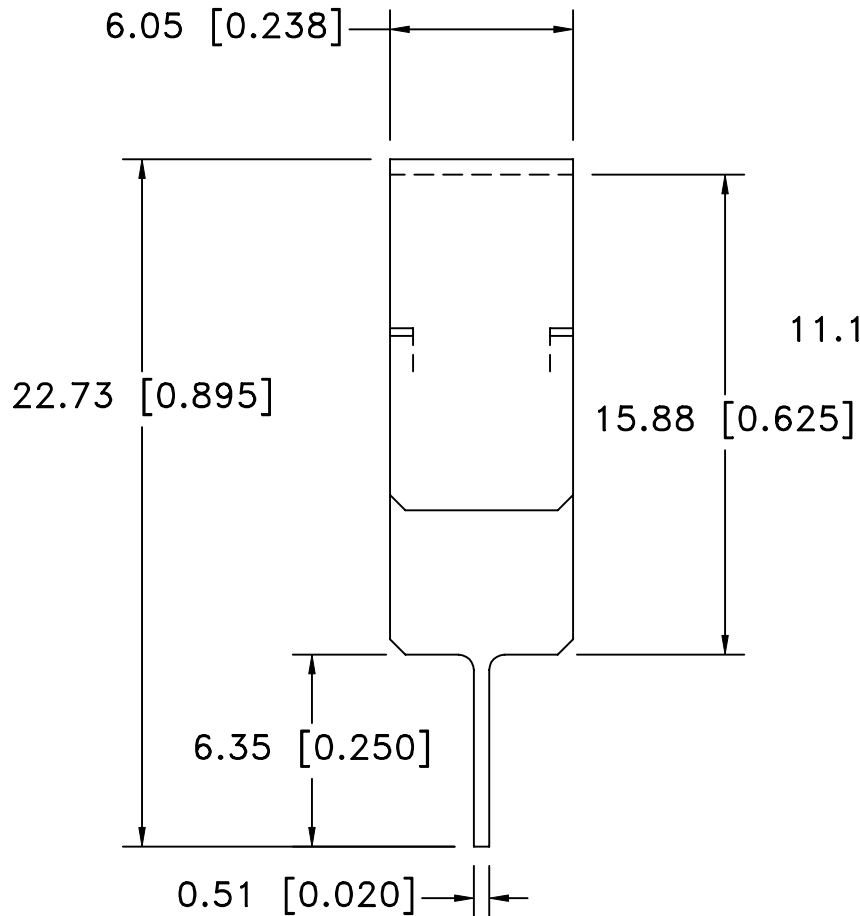



Date	SYM	REVISION RECORD	AUTH	DR.	CK.



NOTES:

**MATERIAL: 0.51mm (0.020") THICK STAINLESS STEEL (302 OR 304)
ELECTROLESS NICKLE PLATED, 0.0001"-0.0003" THICK**

Tolerance (Except as noted)	 Memory Protection Devices, Inc 200 Broad Hollow Road, Farmingdale, New York 11735		
decimal ±.5 (.020)	Scale	Drawn By B.S. Approved By T.B.	
Fractional ± .8 (.030)	Title AA, 2/3A AND 1/2AA CELL CONTACT		
Angular ± 3°	Date 05/25/01	Drawing Number BH2/3TER	