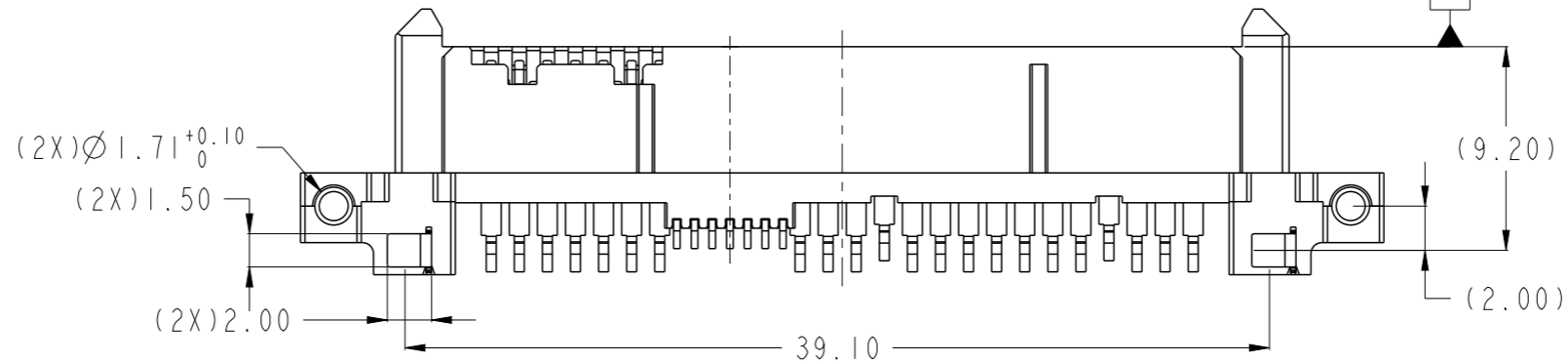
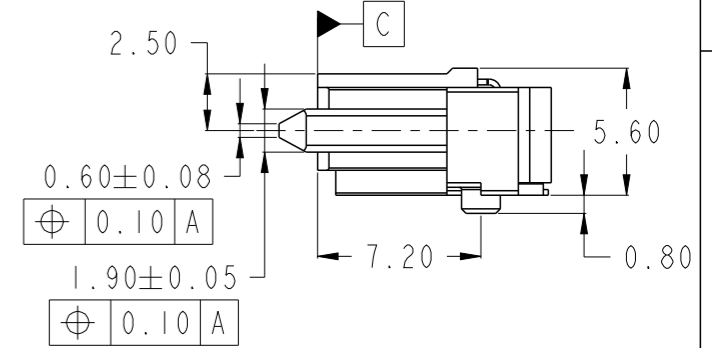
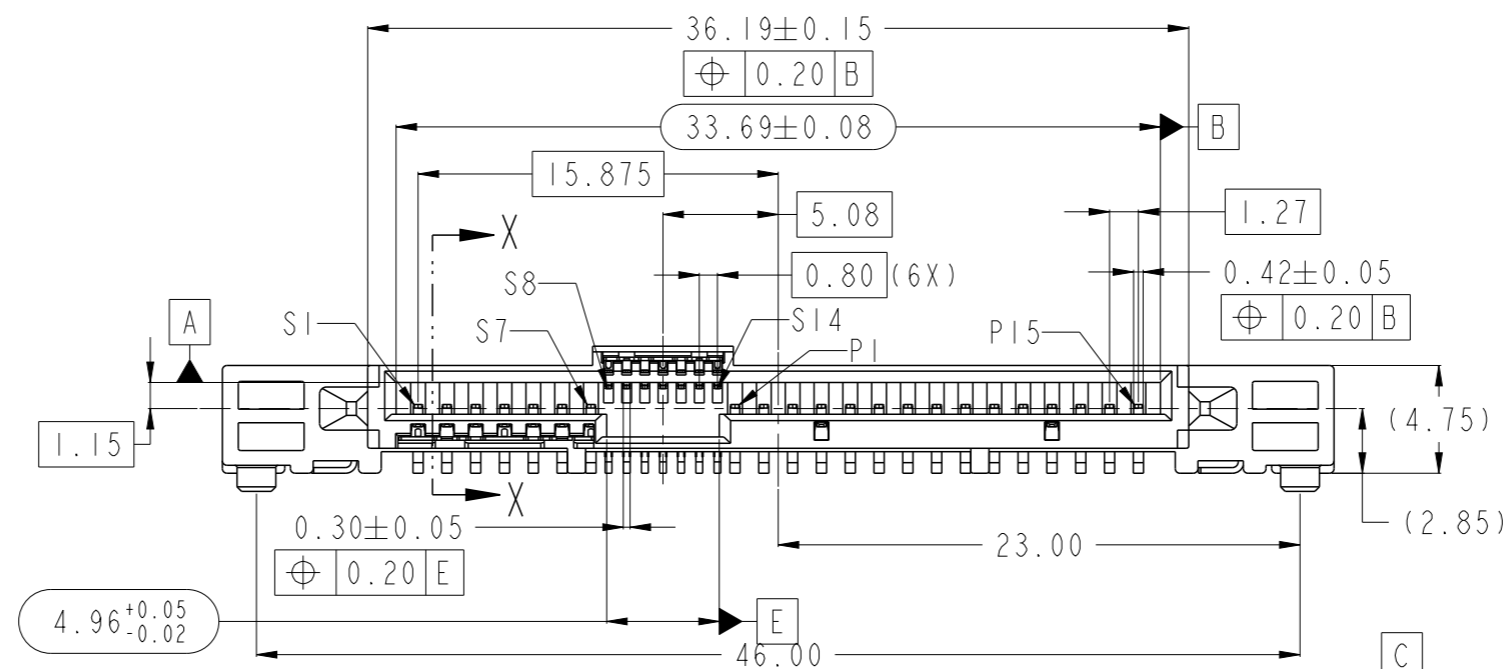
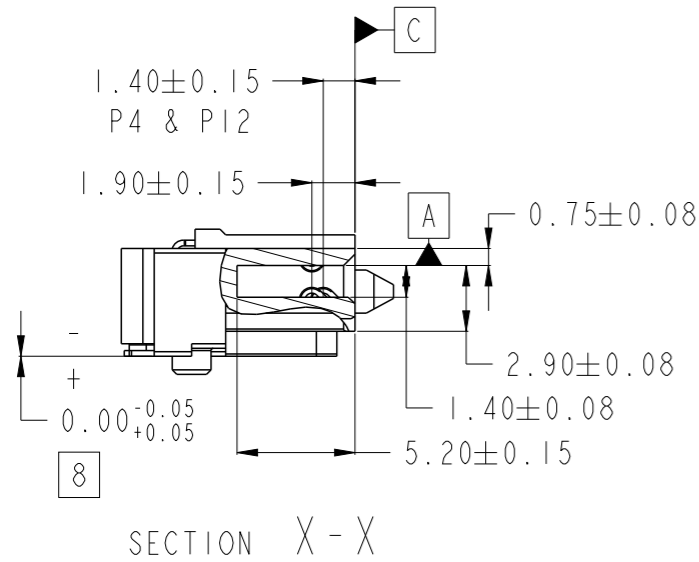
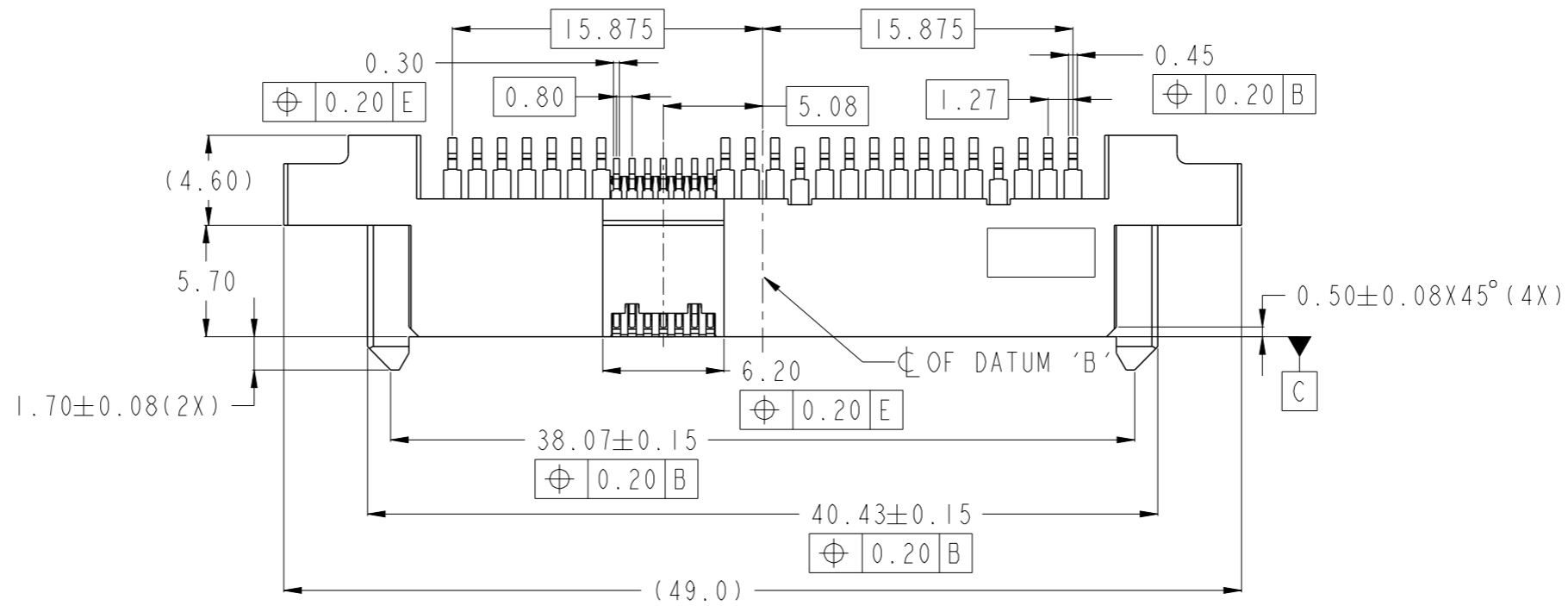


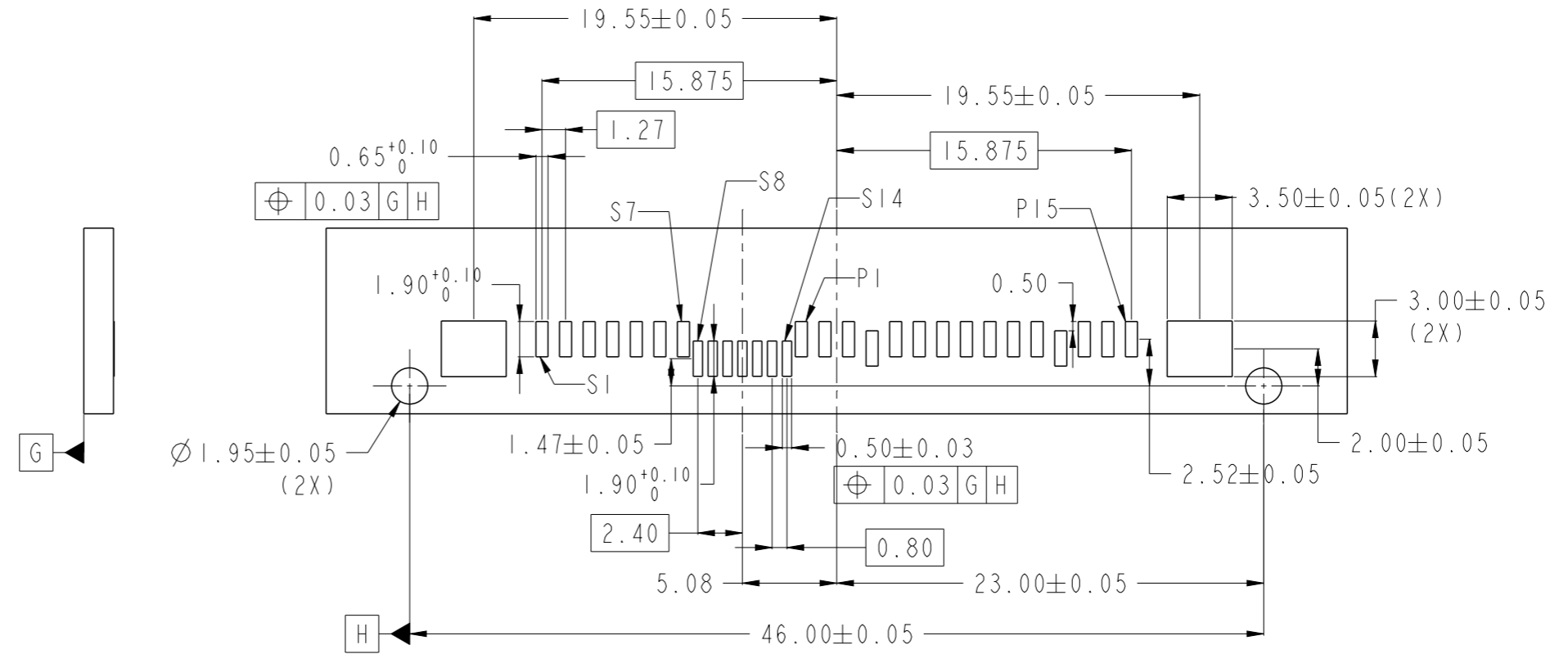
PRODUCT P/N
SEE TABLE, SHT 2



SCALE 3:1

spec ref	-	dr	Koon-Poh Tay	2015/04/08	projection	mm	size	A3	scale	1:1	
tolerance std	ISO 406 ISO 1101	eng	Koon-Poh Tay	2015/06/09			ecn no	-	rel level	Released	
surface	ISO 1302	chr	-	apppr			Chen-Hong Tan	2015/06/09	product family	-	
	linear	0.X	±0.20			12G SAS RECEPTACLE R/A SMT 2.85mm Z-HEIGHT		dwg no 10124274		rev	A
	angular	0°	±2°							www.fci.com	cat. no.

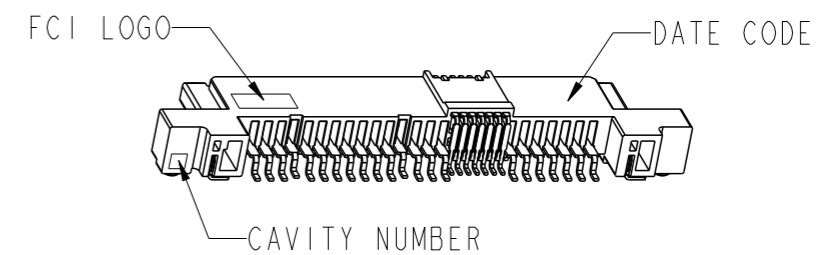
PRODUCT P/N	PACKAGING
10124274-001LF	TRAY
10124274-001TRLF	TAPE & REEL



SCALE 3:1

NOTES:

- MATERIALS:
 - HOUSING: HIGH TEMP THERMOPLASTIC, UL 94V-0, COLOUR: BLACK
 - TERMINAL: COPPER ALLOY
 - HOLD DOWN: COPPER ALLOY
- FINISH:
 - TERMINAL:
 - CONTACT POINT: 30u" MIN Au PLATING OVER 50u" MIN NICKEL
 - SOLDER TAIL: 100u" MIN TIN OVER 50u" MIN NICKEL
 - HOLD DOWN: 100u" MIN TIN OVER 50u" MIN NICKEL
- THE STANDARD PACKAGING IS IN TRAY, UNLESS OTHERWISE SPECIFIED.
- PRODUCT SPECIFICATION: GS-12-282
- THE HOUSING WILL WITHSTAND EXPOSURE TO 260° PEAK TEMPERATURE FOR 10 SECONDS IN A CONVECTION, INFRA-RED OR VAPOR PHASE REFLOW OVEN.
- THIS PRODUCT MEETS EUROPEAN UNION DIRECTIVES AND OTHER COUNTRY REGULATIONS AS DESCRIBED IN GS-47-0004.
- PART NUMBER ENDING IN "LF" DENOTES LEAD FREE.
- ALL SOLDER TAIL MUST BE WITHIN 0.12MM MAX COPLANARITY.
- A \triangle SYMBOL WILL BE NEXT TO ANY DIMENSION, VIEW, OR NOTE WHICH HAS BEEN MODIFIED WITH THE CURRENT DRAWING REVISION.



spec ref	-	dr	Koon-Poh Tay	2015/04/08	projection	mm	size	A3	scale	1:1
tolerance std	ISO 406 ISO 1101	eng	Koon-Poh Tay	2015/06/09			ecn no	-	rel level	Released
TOLERANCES UNLESS OTHERWISE SPECIFIED		chr	-	2015/06/09						
surface	ISO 1302	appr	Chen-Hong Tan	2015/06/09	product family	-	12G SAS RECEPTACLE R/A SMT		dwg no	10124274
	linear	0.X	±0.20		2.85mm Z-HEIGHT		rev	A		
		0.XX	±0.20		cat. no.	-	Product - Customer Drw	sheet 2 of 2		
	angular	0°	±2°		www.fci.com					