

SET UP GAGE
458637-3

REV	DATE	DWN	APPR
I	PRE-RELEASE	22MAR2011	BH BH
A	RELEASED	05MAY2011	BH BH

PART NUMBER	REV	TERMINATOR	FEED TYPE	DESCRIPTION
1530494-1	A	LEADMAKER	MECH POST FEED	CUTS CARRIER
1530494-2	A	BENCH	MECH PRE FEED	CUTS CARRIER
1530494-6	A	LEADMAKER	MECH POST FEED	CONTINUOUS CARRIER
7-1530494-1	A	LEADMAKER	MECH POST FEED	-1 AND SPARE PARTS
7-1530494-2	A	BENCH	MECH PRE FEED	-2 AND SPARE PARTS
7-1530494-6	A	LEADMAKER	MECH POST FEED	-6 AND SPARE PARTS
7-1530494-7	A	-	-	SPARE PARTS KIT

CRIMP DATA SUMITOMO TERMINAL SUMITOMO CRIMP SPECS

TERMINAL NAME: SLO60 SEALED TERMINAL, FEMALE

CRIMP	SIZE	TYPE	RANGE
WIRE	1.78 [.070 IN]	F	0.50mm
INSUL	3.61 [.142 IN]	0	Ø1.60 - 2.40 [.063-.094 IN]

WIRE STRIP LENGTH
4.21-4.59 [.166-.181 IN]

APPL INSTRUCTIONS
408-8322 & 408-8490

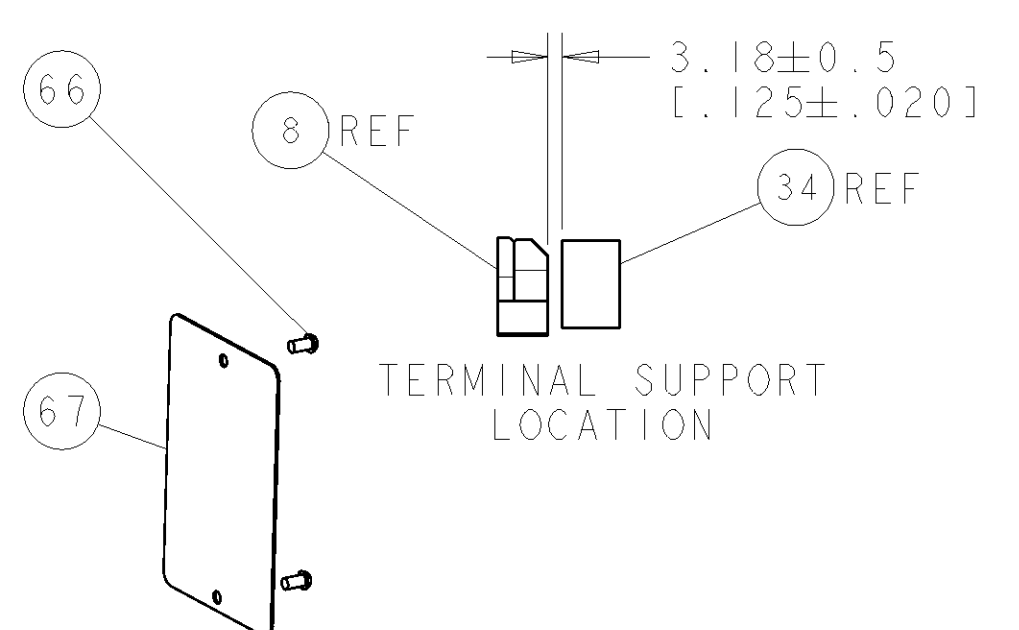
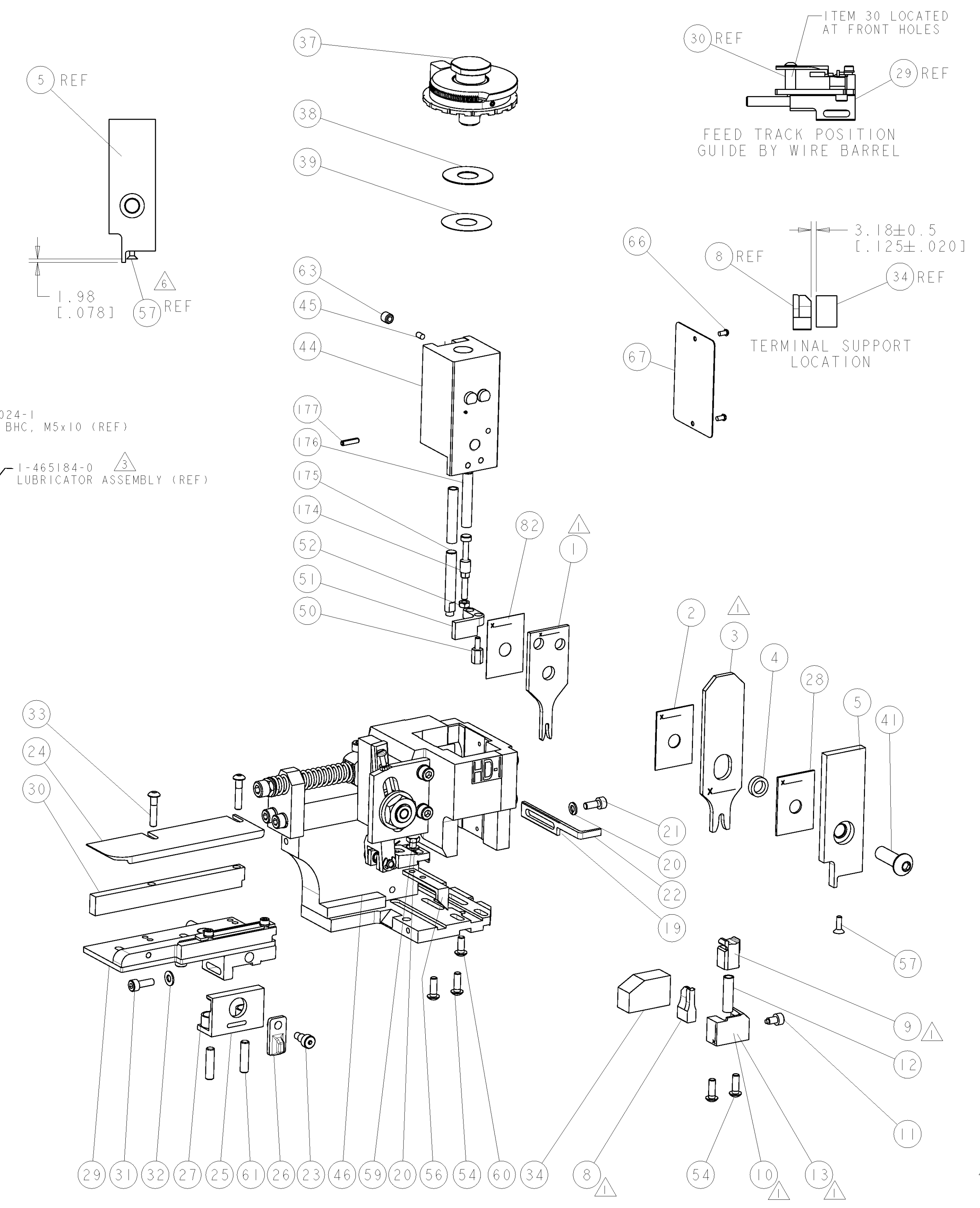
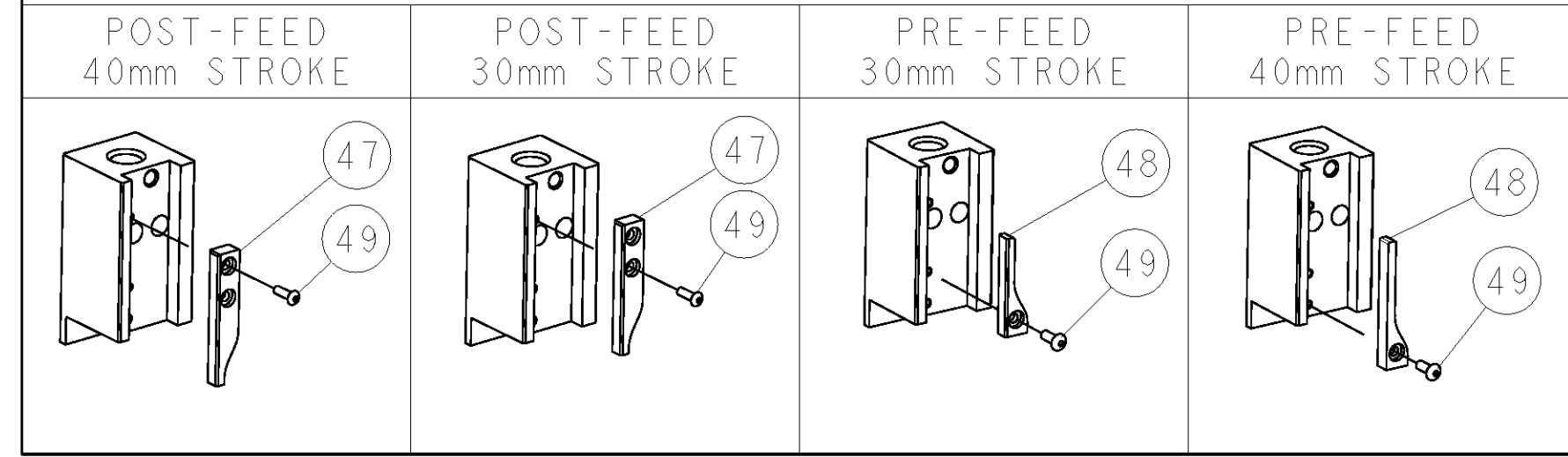
TERMINAL APPL SPEC	FEED
-	12.00 [.472 IN]

TE PN	SUMITOMO PN	TE SEAL PN	SUMITOMO SEAL PN
2113197-1	8100-3397	2113198-1	7165-0515

WIRE SIZE	CRIMP HEIGHT * REF SETTING
0.50mm ²	1.00 ± 0.05 [.039 ± .002 IN]
-	-
-	-
-	-

- ⊠ RECOMMENDED SPARE PARTS
- 2. GREASE RAM, CAM, CAM FOLLOWER AND FEED ROD LIGHTLY
- ⊡ CERTAIN TERMINALS REQUIRE LUBRICATION. REFER TO THE APPLICATOR INSTRUCTION SHEET FOR MORE INFORMATION.
- 4. LUBRICATE DAILY PER THE APPLICATOR INSTRUCTION SHEET SUPPLIED WITH THE APPLICATOR
- ⊢ THIS APPLICATOR APPLIES TERMINAL WITH A SEAL.
- ⊣ APPLY TORQ-SEAL IN ALLEN SOCKET TO FILL HOLE AFTER FLAT HD HAS BEEN ADJUSTED TO CORRECT HEIGHT AT QUALIFICATION. APPLY #1-23419-5 LOC-TITE TO THREADS.

VIEW B ROTATED 180°



*** WARNING**
ON INSTALLATION, SET WIRE DISC TO LARGEST WIRE SIZE SETTING. USE OF SETTINGS BELOW MIN. REQUIRED CRIMP HEIGHT SETTING WILL CAUSE DAMAGE TO CRIMP TOOLING.

-	1	1	1	1	1	1	993111-8	PIN, SLOTTED SPRING 3.0 X 12.0	177
-	2	2	2	2	2	2	3-22280-7	SPRING, COMPRESSION	176
-	1	1	1	1	1	1	1752353-1	GUIDE PIN, HOLDDOWN	175
-	1	1	1	1	1	1	1901680-1	GUIDE PIN, HOLDDOWN	174
-	1	1	1	1	1	1	455888-1	SPACER, CRIMPER	82
-	1	1	1	1	1	1	1338705-3	DOCUMENTATION PACKAGE	71
-	1	1	1	1	1	1	461264-5	PLATE, IDENTIFICATION	67
-	2	2	2	2	2	2	21017-2	SCREW, DRIVE	66
-	1	1	1	1	1	1	3-18031-0	SCR, SET, CUP POINT M6 X 6.0	63
-	2	2	2	2	2	2	2-18032-5	SCR, SET, FLT POINT M5 X 20.0	61
-	1	1	1	1	1	1	18024-7	SCR, BTN SKT HD CAP (M4 X 10.0)	60
-	1	1	1	1	1	1	5-18022-2	SCR, HEX HD CAP M4 X 8.0	59
-	1	1	1	1	1	1	985575-3	SCR, FLT SKT HD CAP M3 X 10.0	57
-	1	1	1	1	1	1	1338685-1	PAWL, FEED	56
-	4	4	4	4	4	4	18024-8	SCR, BTN SKT HD CAP (M4 X 12.0)	54
-	1	1	1	1	1	1	1-18030-0	NUT, HEX, REG M3.5	52
-	1	1	1	1	1	1	1901681-1	HOLDDOWN, TERMINAL	51
-	1	1	1	1	1	1	1-1752354-9	STANDOFF, HOLD-DOWN	50
-	1	1	1	1	1	1	18024-3	SCR, BTN SKT HD CAP (M3 X 10.0)	49
-	1	1	1	1	1	1	1338675-1	CAM, UNIVERSAL PRE FEED	48
-	1	1	1	1	1	1	1338676-1	CAM, UNIVERSAL POST-FEED	47
-	1	1	1	1	1	1	1320999-3	APPLICATOR SUBASSEMBLY, HDI	46
-	1	1	1	1	1	1	690191-1	PLUG, NYLON	45
-	1	1	1	1	1	1	1633724-1	RAM, (SIDE FEED)	44
-	1	1	1	1	1	1	2-18024-6	SCR, BTN SKT HD CAP (M8 X 25.0)	41
-	1	1	1	1	1	1	690125-1	SHIM SUB-ASSY	39
-	1	1	1	1	1	1	1-469367-2	SHIM	38
-	1	1	1	1	1	1	879103-3	FINE ADJUST HEAD ASSEMBLY	37
-	1	1	1	1	1	1	1752356-3	SUPPORT, TERMINAL	34
-	2	2	2	2	2	2	1-18024-0	SCR, BTN SKT HD CAP (M4 X 20.0)	33
-	1	1	1	1	1	1	18027-2	WASHER, FLAT, REG M4	32
-	1	1	1	1	1	1	1-18023-2	SCR, SKT HD CAP M4 X 12.0	31
-	1	1	1	1	1	1	1-1320908-5	SPACER, STRIP GUIDE	30
-	1	1	1	1	1	1	1633073-1	STRIP GUIDE ASSEMBLY	29
-	1	1	1	1	1	1	1-455888-0	SPACER, CRIMPER	28
-	2	2	2	2	2	2	1-22284-0	SPRING, COMPRESSION	27
-	1	1	1	1	1	1	356835-1	LEVER, DRAG RELEASE	26
-	1	1	1	1	1	1	240792-1	DRAG, TERMINAL	25
-	1	1	1	1	1	1	1320928-1	PLATE, STRIP GUIDE	24
-	1	1	1	1	1	1	980371-4	SCR, SKT HD SHLDR 5.0 DIA X 6.0	23
-	1	1	1	1	1	1	690472-2	STRIPPER	22
-	1	1	1	1	1	1	1-18023-1	SCR, SKT HD CAP M4 X 10.0	21
-	2	2	2	2	2	2	18025-2	WASHER, SPRG LOCK, REG M4	20
-	1	1	1	1	1	1	690472-1	STRIPPER	19
-	1	1	1	1	1	1	1338684-2	SHEAR HOLDER, FRONT	13
-	1	1	1	1	1	1	3-22280-3	SPRING, COMPRESSION	12
-	1	1	1	1	1	1	356885-5	STOP, SHEAR	11
-	1	1	1	1	1	1	1-1320921-0	SHEAR HOLDER, FRONT, CUT	10
-	1	1	1	1	1	1	318707-7	FLOATING SHEAR, FRONT	9
-	1	2	2	2	1	1	6-1633130-1	ANVIL, COMBINATION .070	8
-	-	-	-	-	-	-	-	-	7
-	-	-	-	-	-	-	-	-	6
-	1	1	1	1	1	1	1338680-6	DEPRESSOR, SHEAR	5
-	1	1	1	1	1	1	238011-2	BLOCK, CRIMPER SPACER	4
-	1	2	2	2	1	1	7-1583690-2	CRIMPER, INSUL 0	3
-	1	1	1	1	1	1	455888-6	SPACER, CRIMPER	2
-	1	2	2	2	1	1	3-456404-5	CRIMPER, WIRE PREMIUM	1

REV	DATE	DWN	APPR
-77	-76	-72	-71
-6	-2	-1	

THIS DRAWING IS A CONTROLLED DOCUMENT.

DATE: 22MAR2011

CHG: BOB HIGMAN

BY: T. ELBIN

APVD: L. CRUZ

PRODUCT SPEC: FINE ADJUST SIDE FEED HDI APPLICATOR

APPLICATION SPEC: See Table

WEIGHT: A100779

CUSTOMER ACCESSIBLE PRODUCTION DRAWING

SCALE: 3:5

SHEET: 1 OF 1

REV: A