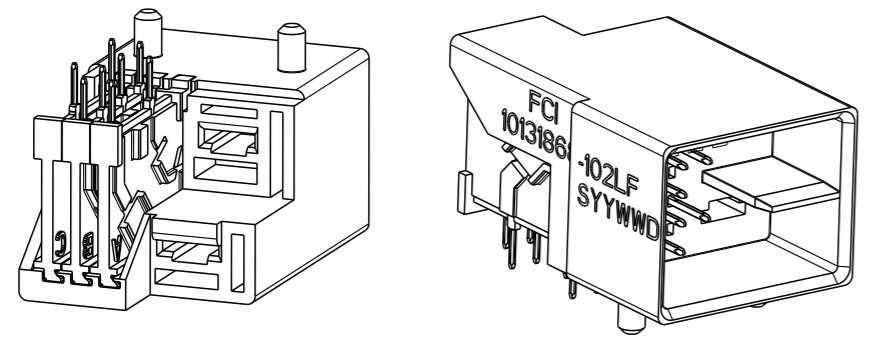
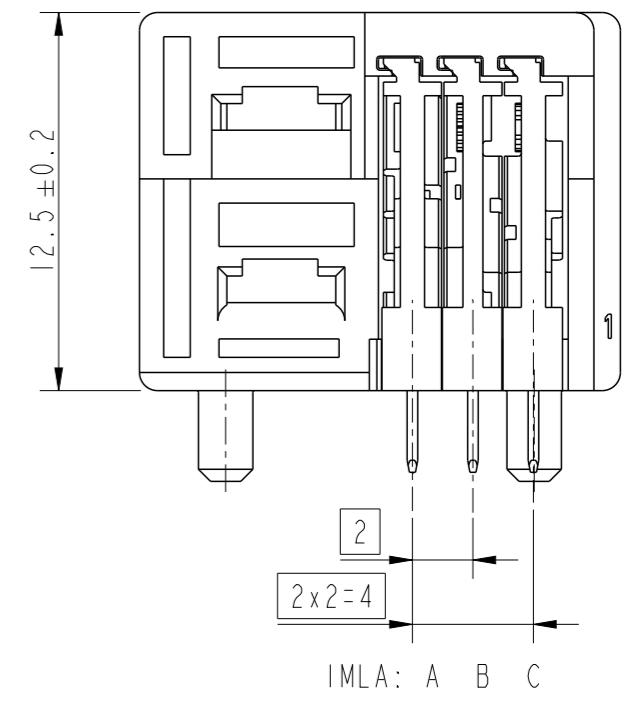
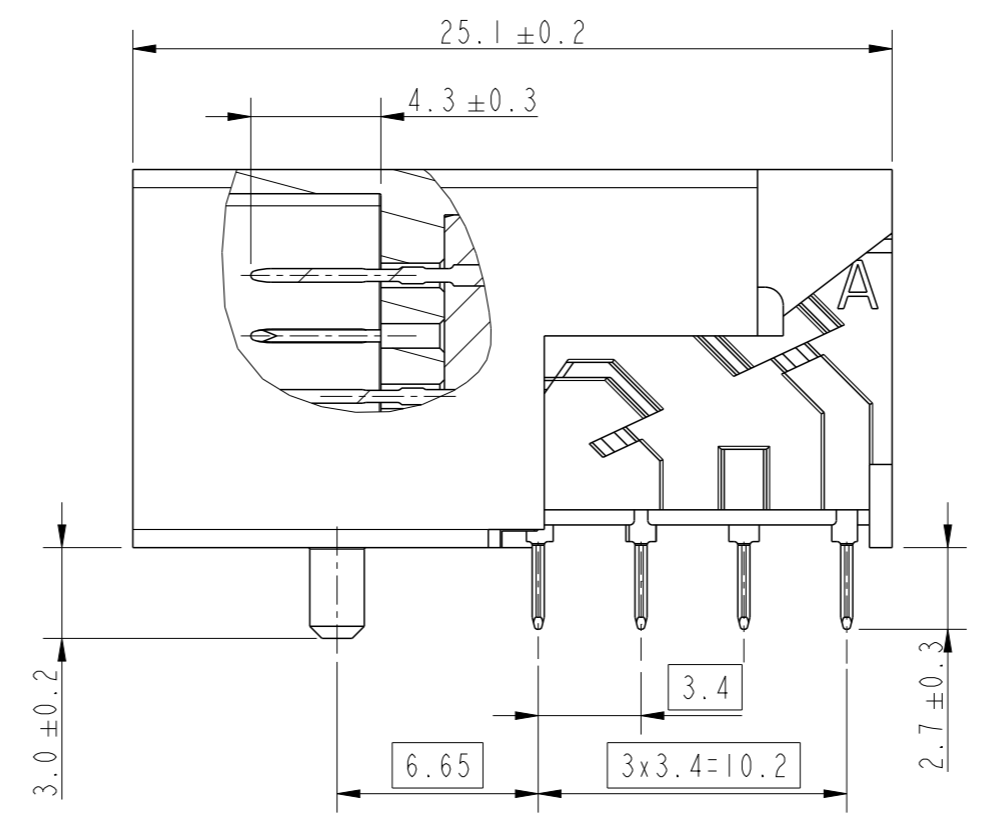
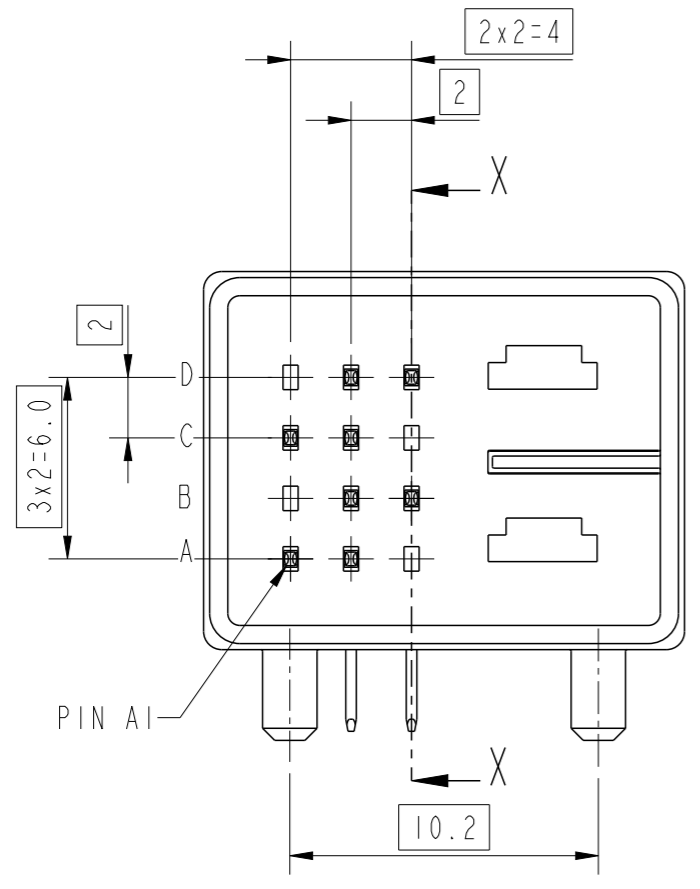
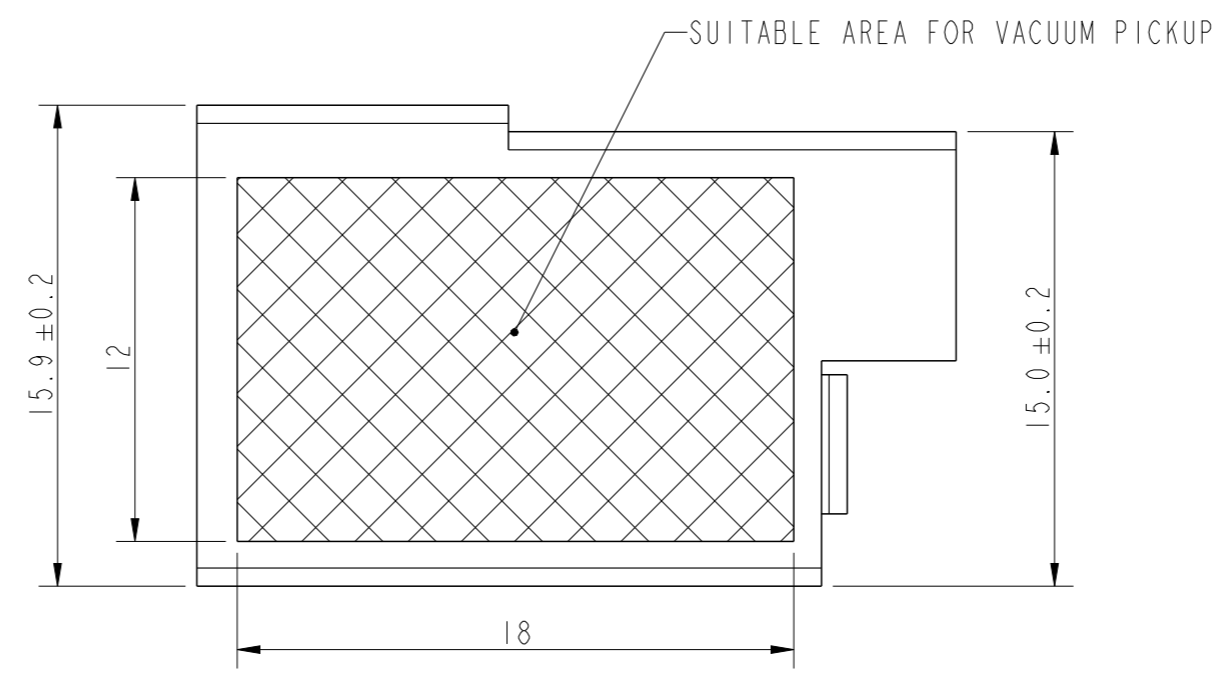


PRODUCT NUMBER  
10131868-102LF



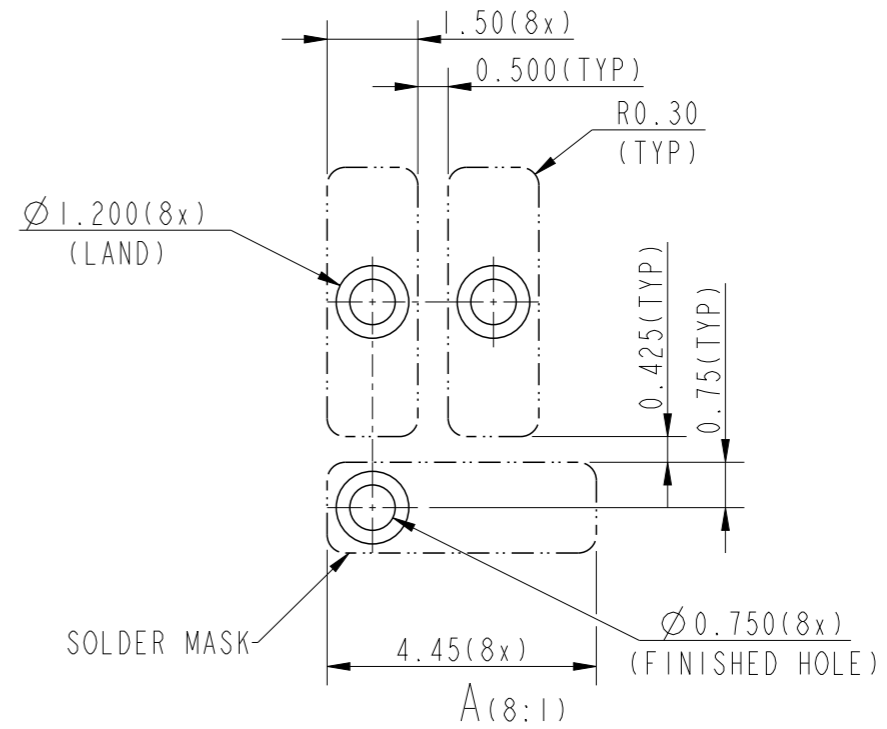
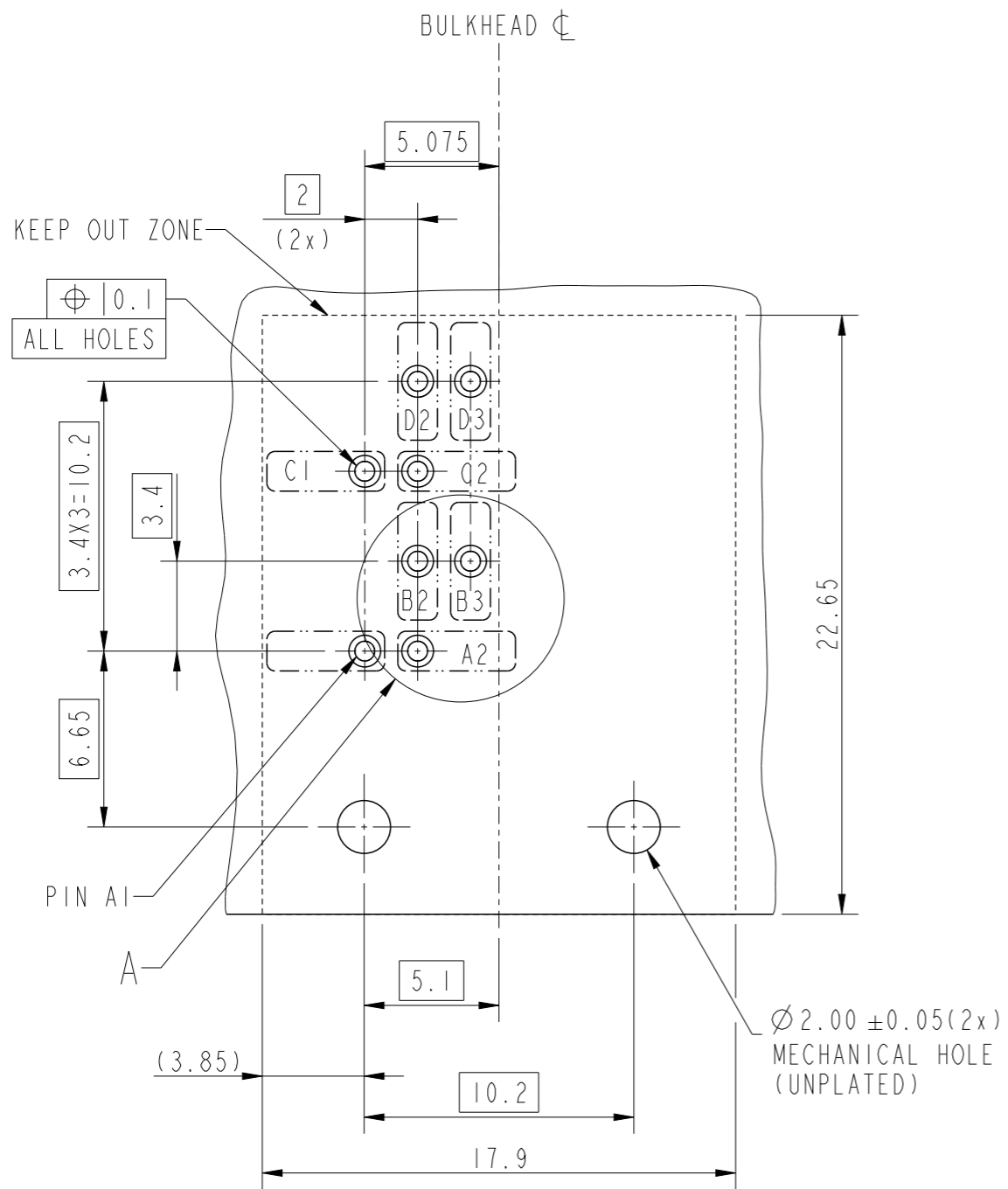
spec ref	-	dr	Alosius, Stali	2015/09/23	projection	mm	size	A3	scale	2:1	
tolerance std	ISO 406 ISO 1101	eng	Alosius, Stali	2022/05/18			ecn no	ELX-I-44756-1	rel level	Released	
TOLERANCES UNLESS OTHERWISE SPECIFIED		chr	-	-			product family	METRAL HDXS	rel level	Released	
surface	linear	0.X	±0.3	<b>Amphenol FCI</b>	title		METRAL HDXS SIGNAL OCTIS RA BC WITH COMBO HSG	dwg no 10131868-102	rev	E	
		0.XX	±0.10		8 SIG PIP TERMINATION		cat. no.		-	Product - Customer Drw	sheet 1 of 4
	angular	0°	±2°								

Creo File:ELX-WC-A3C.REV F.2020-12-21

Amphenol  
FCi

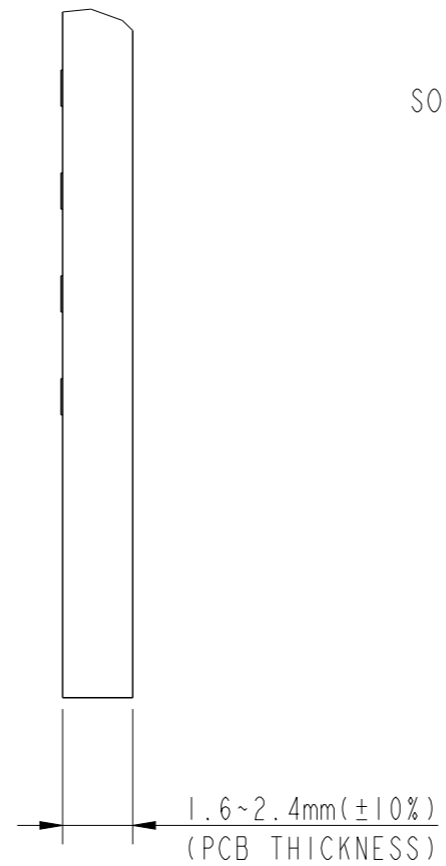
© 2020 Amphenol Corporation

VIEW FROM COMPONENT SIDE



NOTES:

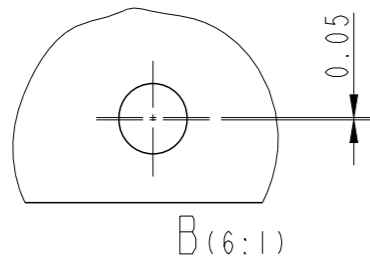
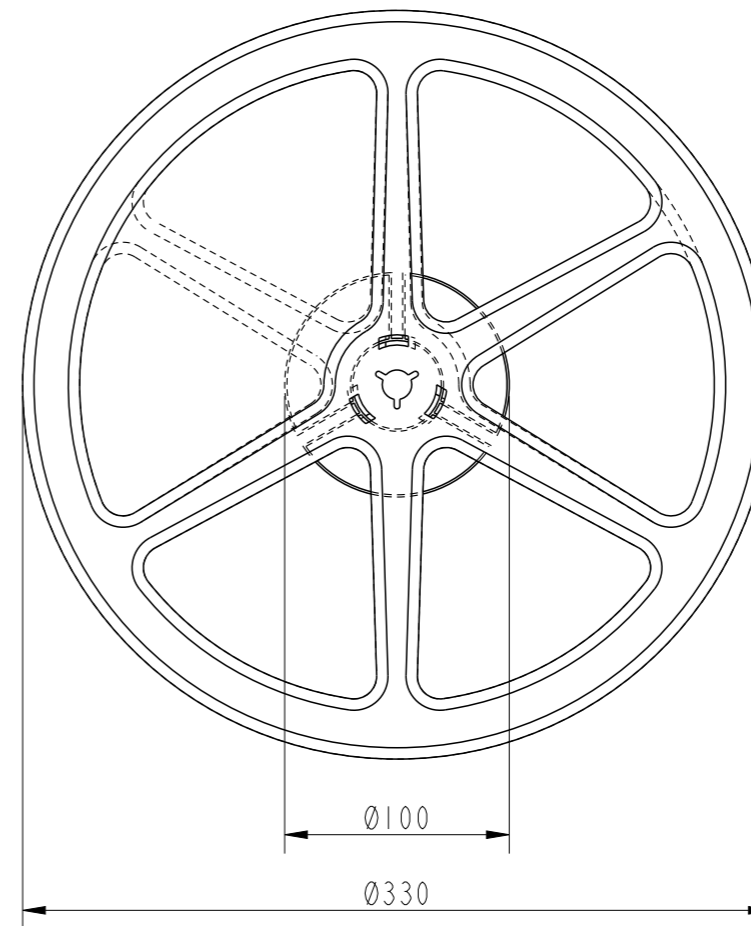
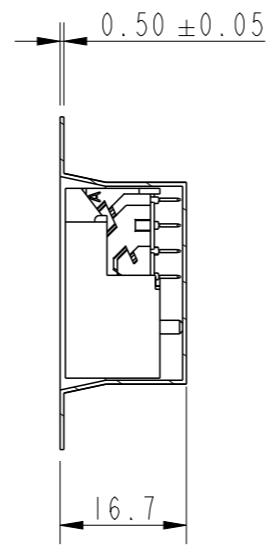
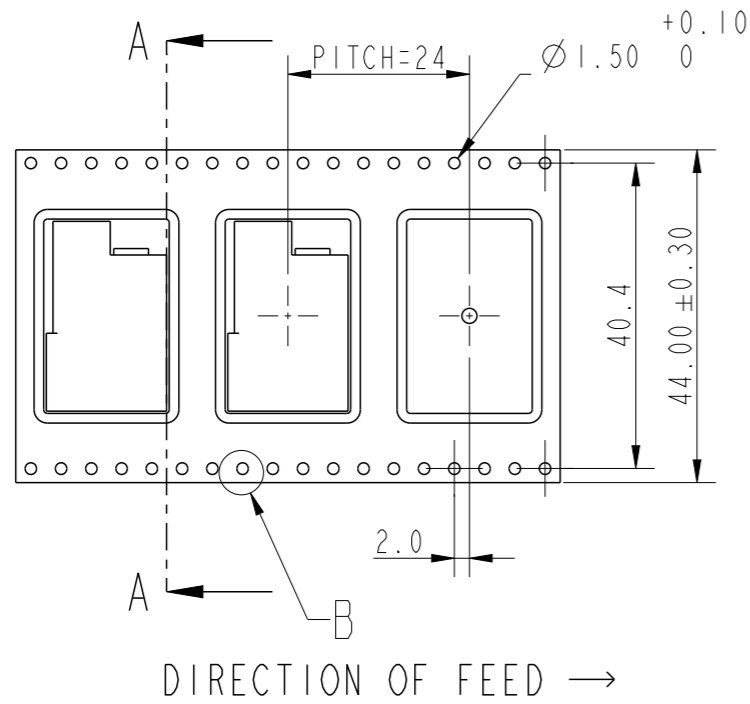
- MATERIAL :  
- RESIN - LCP, GLASS FILLED, FLAME RETARDANT ACC  
FLAMMABILITY CLASSIFICATION - UL94-V0  
- SIGNAL CONTACTS - COPPER ALLOY
- PLATING :  
- GOLD OVER PALLADIUM NICKEL ON CONTACT AREA OF SIGNALS  
PURE TIN AT TERMINAL AREA OF SIGNALS
- PRODUCT SPECIFICATION: GS-12-1334
- APPLICATION SPECIFICATION: GS-20-0454
- PACKAGING - TAPE & REEL  
PACKAGING SPECIFICATION: GS-14-2514
- UNDER PLATING FOR CONTACTS - 1.27µm NICKEL.
- PRODUCT WILL WITHSTAND EXPOSURE TO 260° FOR 60 SECONDS IN A CONVECTION, INFRA RED OR VAPOUR PHASE REFLOW OVEN
- PRODUCT WHERE THE PARTNUMBER ENDS IN LFF MEETS EUROPEAN DIRECTIVES AND OTHER COUNTRY REGULATIONS AS DESCRIBED IN GS-47-0004.



	SIGNAL PTH DETAILS
DRILLED HOLE	0.82-0.87mm
COPPER PLATING	25-50µm
TIN PLATING	0.8-1.2µm
FINISHED HOLE DIA	0.70-0.80mm

spec ref	-	dr	Alosius, Stali	2015/09/23	projection	mm	size	A3	scale	2:1
tolerance std	ISO 406 ISO 1101	eng	Alosius, Stali	2022/05/18			ecn no	ELX-I-44756-1		
TOLERANCES UNLESS OTHERWISE SPECIFIED		chr	-	-			product family	METRAL HDXS		rel level
surface	linear	0.X	±0.3		METRAL HDXS SIGNAL OCTIS RA BC WITH COMBO HSG			dwg no	10131868-102	
		0.XX	±0.10		8 SIG PIP TERMINATION			rev	E	
	angular	0°	±2°		cat. no.	-	Product - Customer Drw	sheet 2 of 4		

PACKAGING SPECIFICATION

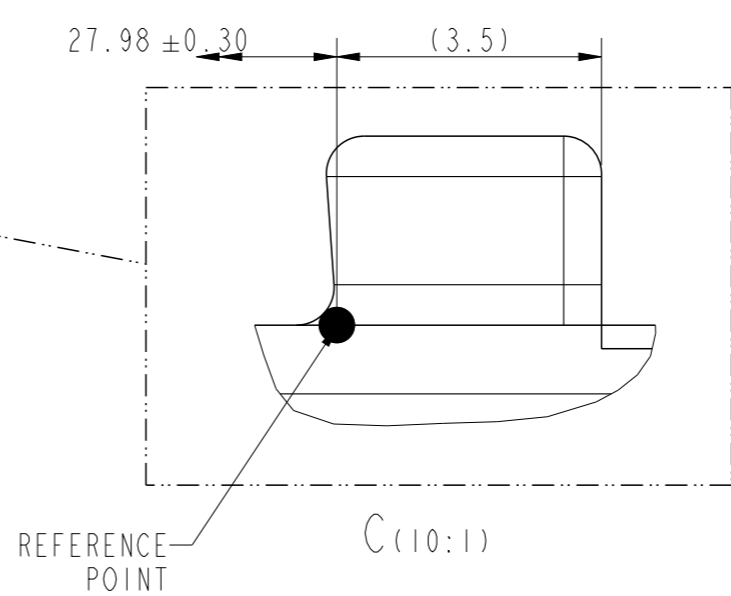
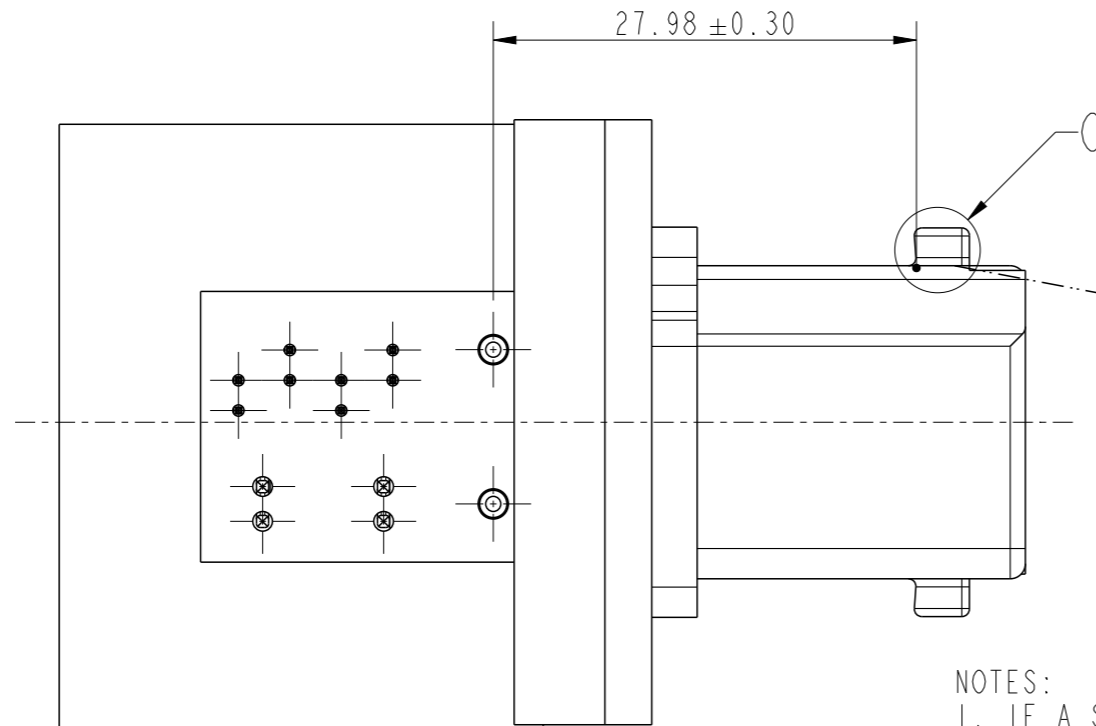
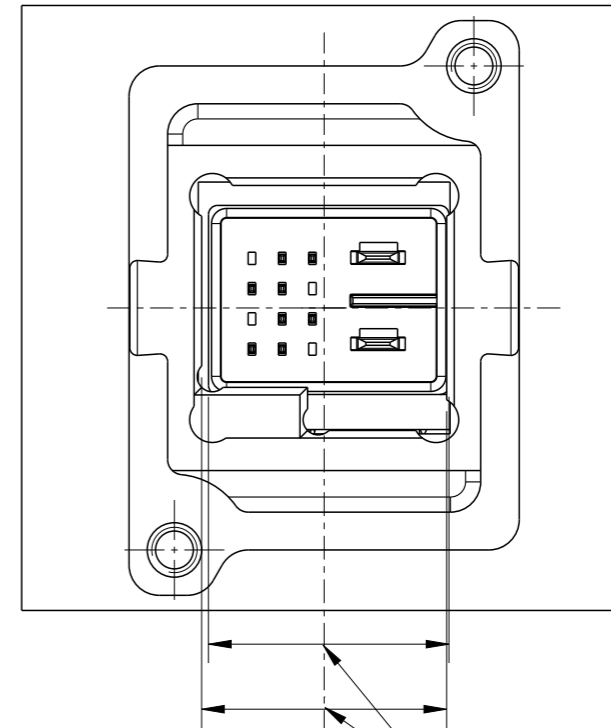
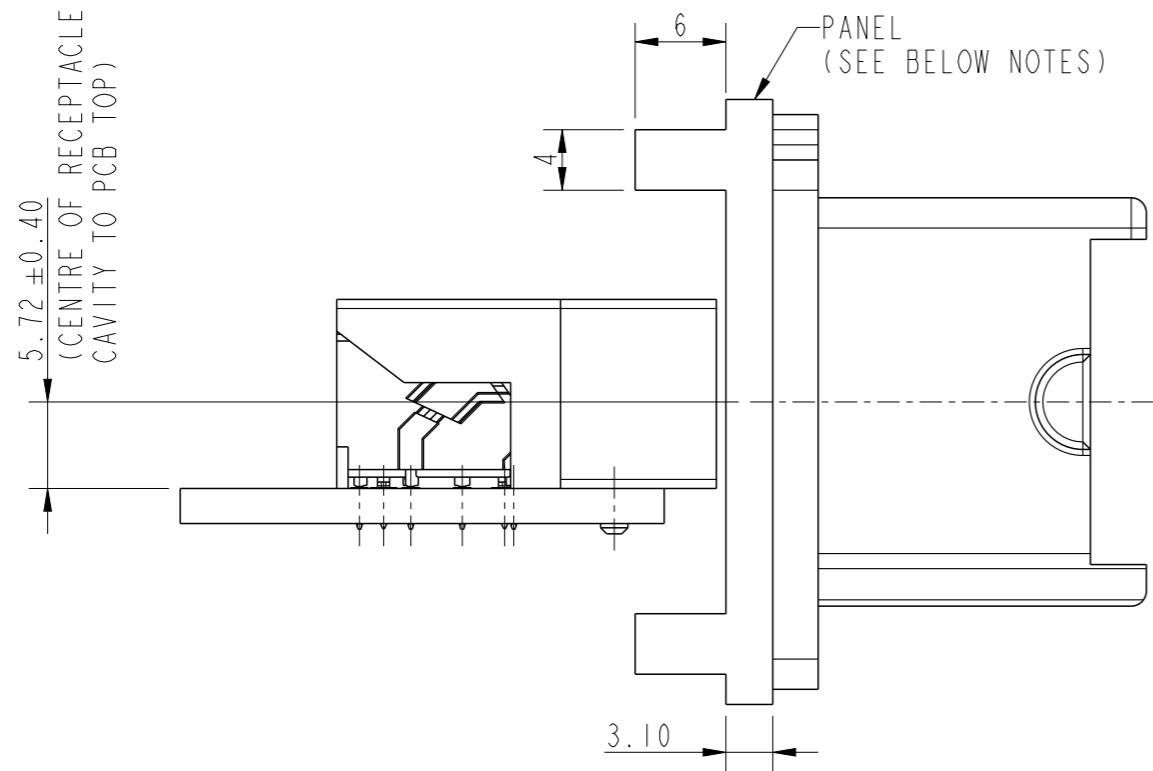


TAPE & REEL PACKING DETAILS

NOTES:

- CONNECTORS PACKED PER REEL : 150 PIECES
- PACKAGING DETAILS AS PER EIA-481 STD.
- PACKING SHOULD BE ANTISTATIC.
- MATERIAL :  
CARRIER TAPE : POLYSTYRENE  
COVER TAPE : POLYSTYRENE

spec ref	-	dr	Alosius, Stali	2015/09/23	projection	mm	size	A3	scale	1:1	
tolerance std	ISO 406 ISO 1101	eng	Alosius, Stali	2022/05/18			ecn no	ELX-I-44756-1			
TOLERANCES UNLESS OTHERWISE SPECIFIED		chr	-	-			rel level	Released			
surface	linear	appr	Kuriakose, San	2022/05/19	product family	-	dwg no	10131868-102		rev	E
ISO 1302	angular	<b>Amphenol FCI</b>		METRAL HDXS SIGNAL OCTIS RA BC WITH COMBO HSG 8 SIG PIP TERMINATION		cat. no.	-	Product - Customer Drw	sheet 3 of 4		



NOTES:

1. IF A SCREW TYPE BULKHEAD IS USED, THEN THE CASTED MOUNTING PANEL SHOULD HAVE ON ITS REAR SIDE AN INTEGRAL RECTANGULAR REINFORCED RIBS OF 6MM THICKNESS AND 4MM WIDTH ALONG THE MOUNTING SCREW PLANE AT THE TOP AND BOTTOM TO ACCOMODATE THE BLIND INTERNAL SCREW THREAD. IT IS NOT APPLICABLE FOR INTEGRATED BULKHEAD CASTED WITH MOUNTING PANEL
2. IF THE BULKHEAD IS SCREW TYPE THEN THE SCREWS TO BE USED ARE M3; RECOMMENDED SCREW - M3X8MM; MATERIAL-STAINLESS STEEL
3. BULKHEAD PART NO. -10138461-101LF

spec ref	-			dr	Alosius, Stali	2015/09/23	projection	mm	size	A3	scale	1:2
tolerance std	TOLERANCES UNLESS OTHERWISE SPECIFIED			eng	Alosius, Stali	2022/05/18			ecn no		ELX-I-44756-1	
ISO 406				chr	-	-			rel level		Released	
ISO 1101				appr	Kuriakose, San	2022/05/19	product family					
surface	linear	0.X	±0.3	<b>Amphenol FCi</b>	METRAL HDXS SIGNAL OCTIS RA BC WITH COMBO HSG			dwg no	10131868-102		rev	E
		0.XX	±0.10		8 SIG PIP TERMINATION							
		0.XXX	±0.050									
ISO 1302	angular	0°	±2°	cat. no.	Product - Customer Drw			sheet 4 of 4				