

RED INDICATES ORIGINAL

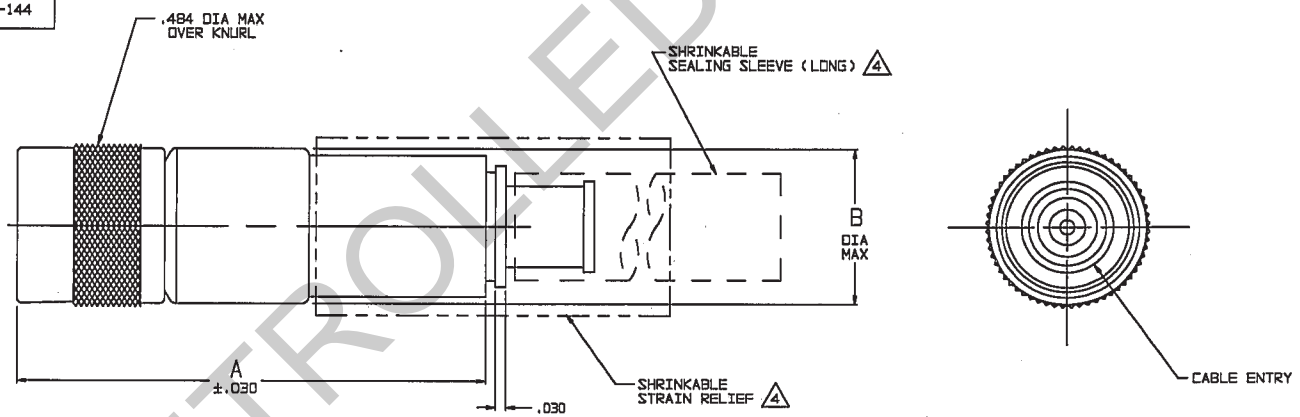
DATA CONTAINED IN THIS DOCUMENT IS PROPRIETARY TO TROMPETER ELECTRONICS INC. AND SHALL NOT BE DISCLOSED, COPIED OR USED FOR PROCUREMENT OR MANUFACTURE WITHOUT EXPRESS WRITTEN PERMISSION.

| REVIEWS | | 310-0061 | SH 1 |
|---------|-------|----------------------------|--------|
| REV | EO | DESCRIPTION | DATE |
| K | 12388 | ADDED -224 & -225; SEE ECO | 4-8-98 |

| DASH NO | CABLES ACCOMMODATED | A DIM | B DIA | C HEX | ASSEMBLE PER |
|---------|----------------------|-------|-------|-------|--------------|
| -201 | M17/176-00002 | | | | |
| -202 | TWC-78-1 | | | | |
| -203 | TWC-124-1A | | | | |
| -204 | 10602, RAYCHEM | 1.116 | .399 | .255 | TAI-143 |
| -205 | TWAC-78-1F2 | | | | |
| -206 | 782600130, RAYCHEM | | | | |
| -207 | 83310 BELDEN | 1.322 | .442 | .344 | TAI-167 |
| -208 | 202-3927 MICRODOT | 1.116 | .399 | .255 | TAI-143 |
| -209 | 202-3942 MICRODOT | | | | |
| -210 | 8451 BELDEN | | | | TAI-167 |
| -211 | 202-3934 MICRODOT | | | | |
| -212 | 2524E0114, RAYCHEM | | | | |
| -213 | TWC-78-2 | 1.322 | .442 | .344 | TAI-144 |
| -214 | TWC-124-2 | | | | |
| -215 | BL-982 TIMES | | | | |
| -216 | BL-1242 TIMES | | | | |
| -217 | GC875TM24H, GRUMMAN | | | | |
| -218 | EPO 22188B, RAYCHEM | | | | |
| -219 | 2526D1114, RAYCHEM | | | | |
| -220 | GC875RR1, GRUMMAN | 1.116 | .399 | .255 | TAI-143 |
| -221 | 10614, RAYCHEM | | | | |
| -222 | 10613, RAYCHEM | | | | |
| -223 | HMS2-1149, HUGHES | | | | |
| -224 | TWCP-124-3 | 1.322 | .442 | .344 | TAI-144 |
| -225 | PS865PL, PRIME STOCK | | | | |

| DASH NO | CABLES ACCOMMODATED | A DIM | B DIA | C HEX | ASSEMBLE PER |
|---------|---|-------|-------|-------|--------------|
| -301 | GC875GC1, GRUMMAN | | | | |
| -302 | GC875GB1, GRUMMAN 5022E5111, RAYCHEM | 1.116 | .399 | .255 | TAI-153 |
| -303 | 7528A5314, RAYCHEM | | | | |
| -304 | | | | | |
| -305 | M17/177-00001 295-3804 MICRODOT | | | | TAI-173 |
| -306 | TRC-50-2 M17/134-00002 | 1.322 | .442 | .344 | TAI-198 |
| -307 | TRC-75-1 | | | | TAI-173 |
| -308 | TRC-75-2 | | | | TAI-153 |
| -309 | TRC-50-1 | 1.116 | .399 | .255 | |

| INCH | MM |
|-------|-------|
| .005 | 0.13 |
| .030 | 0.76 |
| .255 | 6.48 |
| .399 | 8.61 |
| .344 | 8.74 |
| .442 | 11.23 |
| .484 | 12.28 |
| 1.00 | 25.40 |
| 1.116 | 28.35 |
| 1.25 | 31.75 |
| 1.322 | 33.58 |
| 1.75 | 44.45 |



- A** 1 SHRINKABLE STRAIN RELIEF AND/OR SHRINKABLE SEALING SLEEVE SUPPLIED LOOSE AS FOLLOWS:
- a. CABLE GROUPS -207, -210 & -307:
 - 1 SHRINKABLE STRAIN RELIEF (1.00 LONG)
 - 1 SHRINKABLE SEALING SLEEVE (1.25 LONG)
 - b. CABLE GROUPS -201 THROUGH -206, -208, -209, -217 THROUGH -223, -301, -302, -303 & -309:
 - 1 SHRINKABLE SEALING SLEEVE (1.25 LONG)
 - c. CABLE GROUPS -211 THROUGH -216, -305, -306 & -308:
 - 1 SHRINKABLE STRAIN RELIEF (1.75 LONG)
3. 4-LUG SUBMINIATURE CONCENTRIC TWINAX (4 PIECE ASSY) AND TRIAX (6 PIECE ASSY), FULL CRIMP CABLE PLUG
2. FINISH: TFS-1A (NICKEL)
1. ALL DIM ARE IN INCHES

-207 SHOWN

6. EXAMPLE OF COMPLETE MODEL NO:
PL155ACFL-201
BASIC MODEL NO _____ CABLE GROUP DASH NO _____
5. EXAMPLE OF COMPLETE PART NO:
310-0061-201
BASIC PART NO _____ CABLE GROUP DASH NO _____



| QTY | DESCRIPTION | PART NUMBER | ITEM |
|--|-------------------------------------|-------------|--------------|
| TOL UNLESS SPECIFIED .XX ± .03 .XXX ± .005 XXX ± .00002 ANGLES | TROMPETER RF connectivity | PL155ACFL | |
| DWN DBN 4/3/98 | MATERIAL | CODE IDENT | DRAWING NO. |
| CHK KM 4-7-98 | | 14949 | 310-0061 |
| ENGR | APPR | SCALE 4/1 | DATE 6-8-95 |
| NEXT ASSY | | | SHEET 1 OF 2 |