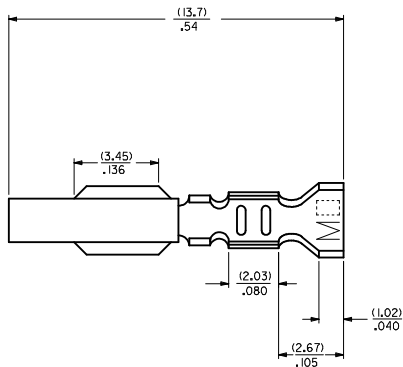


CHAIN FORM  
SCALE 5:1



**LEGEND**

8818--\*\*--(\*)\*

**MATERIAL**  
(.27)/.0106 THK.  
BLANK= BRASS  
A= PHOS BRONZE

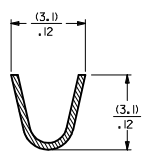
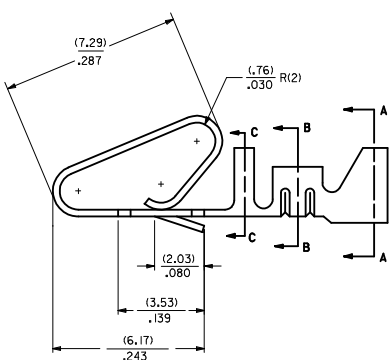
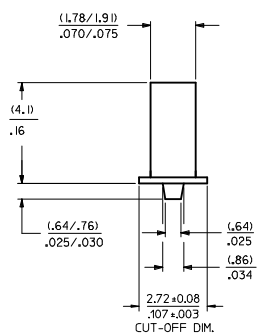
**OPTION CODE**  
BLANK=AS SHOWN

**WINDING SPEC**  
BLANK=CHAIN, PER WINDING DETAIL "B"  
L=L.OOSE

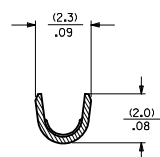
**PLATING**  
SEE NOTE 2

EDP NO.	ENGINEERING NO.
	8818-(555)
	8818-(555)L
08-50-0008	8818-(P909)
08-50-0023	8818-(P909)L
40-01-1181	8818-(999)
40-01-1182	8818-A(999)
08-65-0128	8818-A(555)
08-65-0129	8818-A(555)L
08-52-0131	8818-A(P909)
08-52-0132	8818-A(P909)L
08-58-0135	8818-A(550)
08-58-0136	8818-A(550)L

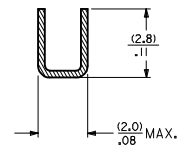
- NOTES:**
1. MATERIAL: SEE LEGEND
  2. FINISH:  
(P909) OVERALL HOT TIN DIP: (0.00254)/.000100 MIN.  
(550) SELECT GOLD: (0.000381)/.000015 MIN.  
OVERALL GOLD FLASH: (0.000051)/.000002 MIN.  
OVERALL NICKEL UNDERPLATE: (0.000761)/.000030 MIN.  
(555) SELECT GOLD: (0.000381)/.000015 MIN.  
OVERALL NICKEL UNDERPLATE: (0.000761)/.000030 MIN.
  3. PRODUCT SPECIFICATION: PS-08-50
  4. PACKAGING SPECIFICATION:  
LOOSE TERMINALS: PER PK-2759-001  
CHAIN FORM TERMINALS: NONE
  5. CRIMP ACCEPTS 18-22 GA. WIRE WITH (2.79)/.110 MAX. INSULATION DIA.
  6. DIMENSIONS GIVEN ACROSS CENTERLINES ARE SYMMETRICAL ABOUT THOSE CENTERLINES WITHIN HALF THE TOTAL TOLERANCE.
  7. TERMINAL FOR USE IN 41695 SERIES HOUSINGS.
  8. THIS PART CONFORMS TO CLASS B REQUIREMENTS OF COSMETIC SPECIFICATION PS-45499-002.



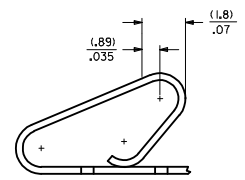
SECTION A-A



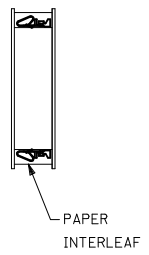
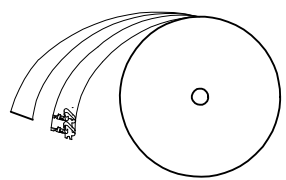
SECTION B-B



SECTION C-C



POST-PLATED SELECT GOLD LOCATION



WINDING DETAIL "B"

ADD WINDING DETAIL		QUALITY SYMBOLS		GENERAL TOLERANCES (UNLESS SPECIFIED)		DIMENSION STYLE		SCALE		DESIGN UNITS		THIRD ANGLE PROJECTION	
EC NO.	DATE	DRWNG/CHKR	DATE	mm	INCH	MM/IN	DATE	---	INCH				
UJF2014-4131	2014/04/07	DRWNG/CHKR	2014/04/07	4 PLACES	± .010	---	JJS	02/02/193	---	CRIMP STYLE			
		CHKDR/NGVGN	2014/04/07	3 PLACES	± 0.25	± .014		DATE		KK TYPE, .156 CENTERS			
		APPR:FSM/TH	2014/04/21	2 PLACES	± 0.36	± .014	PATEL	02/02/193		W/ANTIFISHOOKING FEATURE			
				1 PLACE	± .010	± .010		DATE		<b>molex</b>			
				0 PLACE	± .010	± .010	LENZ	02/02/193		DOCUMENT NO. SD-8818			
				ANGULAR ±1/2°		MATERIAL NO. SEE CHART		SHEET NO. 1 OF 1		THIS DRAWING CONTAINS INFORMATION THAT IS PROPRIETARY TO MOLEX INCORPORATED AND SHOULD NOT BE USED WITHOUT WRITTEN PERMISSION			