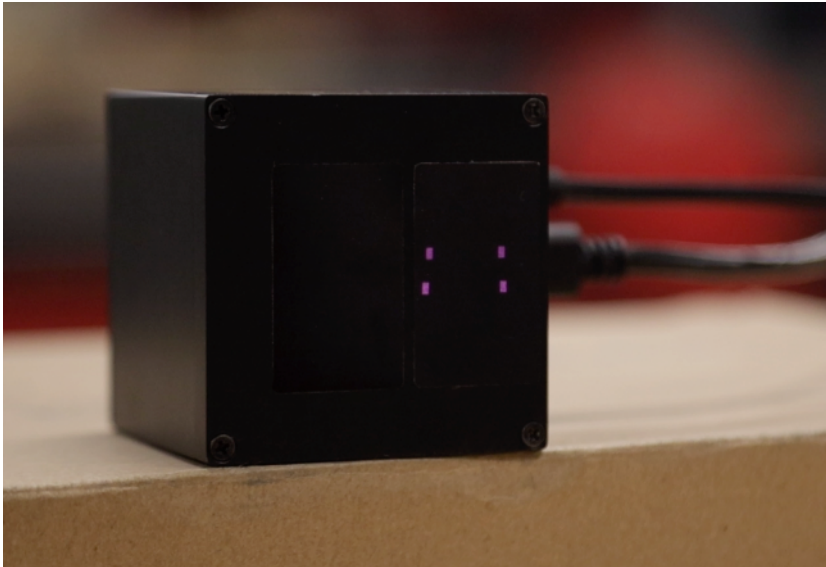


# DepthEye Wide

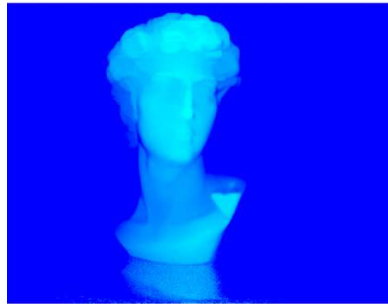
## Time-Of-Flight(ToF) Camera with Sony DepthSense



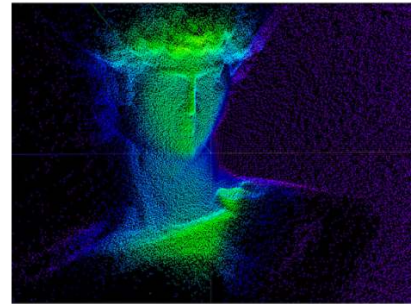
|                       |  |
|-----------------------|--|
| Model                 | DepthEye Wide                          |
| Sensor/Pixel Size     | Sony IMX556PLR CMOS /10 $\mu$ m        |
| Resolution/FPS        | 0.3MP 640 x 480 px/ Max 30 FPS         |
| Dimension &Weight     | 58 x 58 x 52 mm / 305 g                |
| Accuracy              | Less than 1cm at 1.5m                  |
| Precision             | Standard deviation less than 3mm at 1m |
| Working Range         | 0.3m to 2.5m                           |
| FOV                   | H100° x V75°                           |
| Data Interface        | USB 3.1 Gen1 /Type C                   |
| Power Consumption     | 12V/ 1A (Peak) /0.5A(Average)          |
| Illumination          | 4 x VCSEL laser diodes @ 850nm         |
| Operating Temperature | -10° C to 60° C case temperature       |
| SDK Platform          | Windows/Linux/Mac/Ros                  |
| SDK language support  | C++/Python                             |



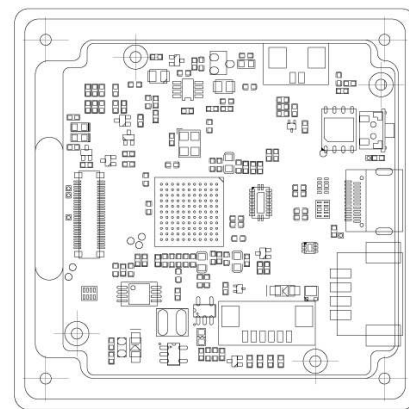
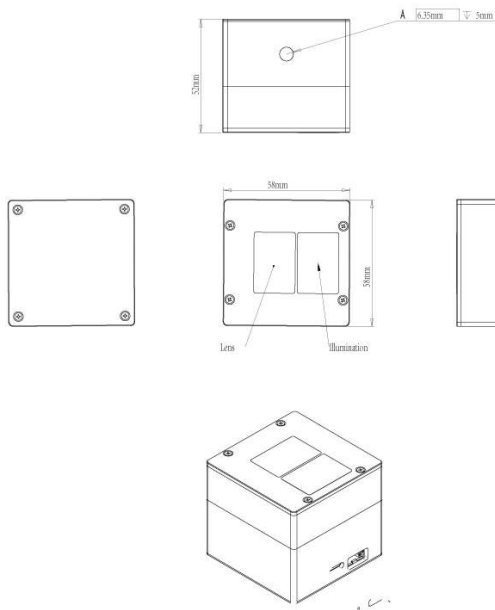
Amplitude Image



Depth Image



PointCloud Image



## Support

SDK & Documents

<https://github.com/pointcloudAI/libPointCloud>

Support Email

[dev@pointcloud.ai](mailto:dev@pointcloud.ai)