

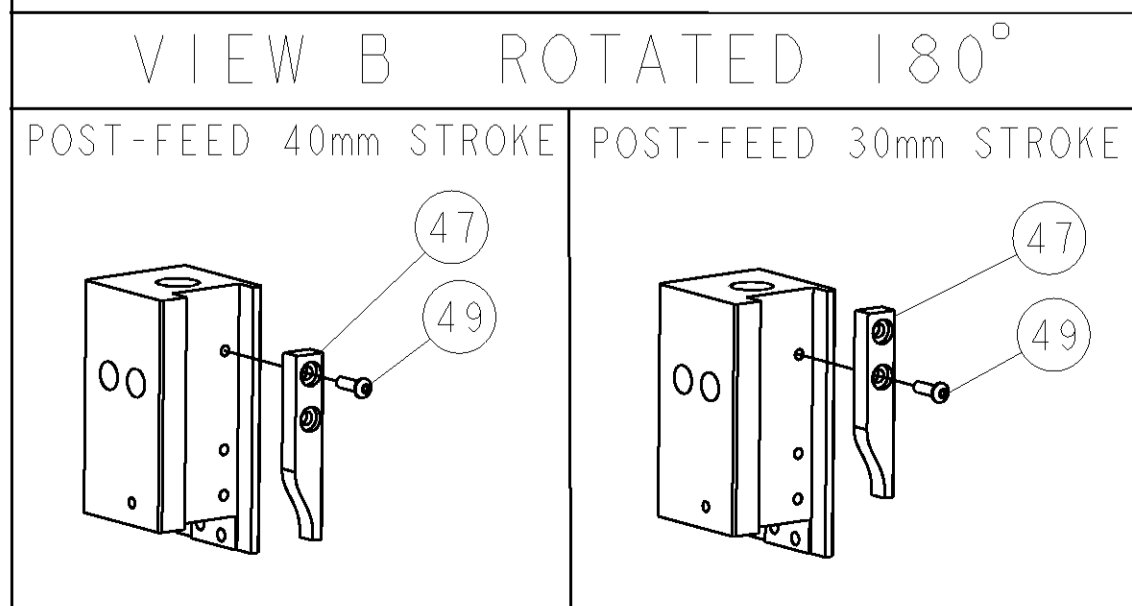
PART NUMBER	REV	TERMINATOR	FEED TYPE	DESCRIPTION
1529202-1	B	BENCH & LEADMAKER	MECH POST FEED	HDI APPLICATOR
7-1529202-1	B	BENCH & LEADMAKER	MECH POST FEED	-1 AND SPARE PARTS
7-1529202-7	A	-	-	SPARE PARTS KIT

CRIMP DATA	TE TERMINAL	TE CRIMP SPECS
TERMINAL NAME: .187 SERIES POSITIVE LOCK MK II		
CRIMP	SIZE	TYPE RANGE
WIRE	2.03 [.080 IN]	F 0.75-1.50mm ²
INSUL	3.94 [.155 IN]	F 1.90-3.40 [.075-.134 IN]
WIRE STRIP LENGTH	5.00 [.197 IN]	APPL INSTRUCTIONS 408-8323 & 408-8490
TERMINAL APPL SPEC	114-18022	FEED 22.10 [.870 IN]

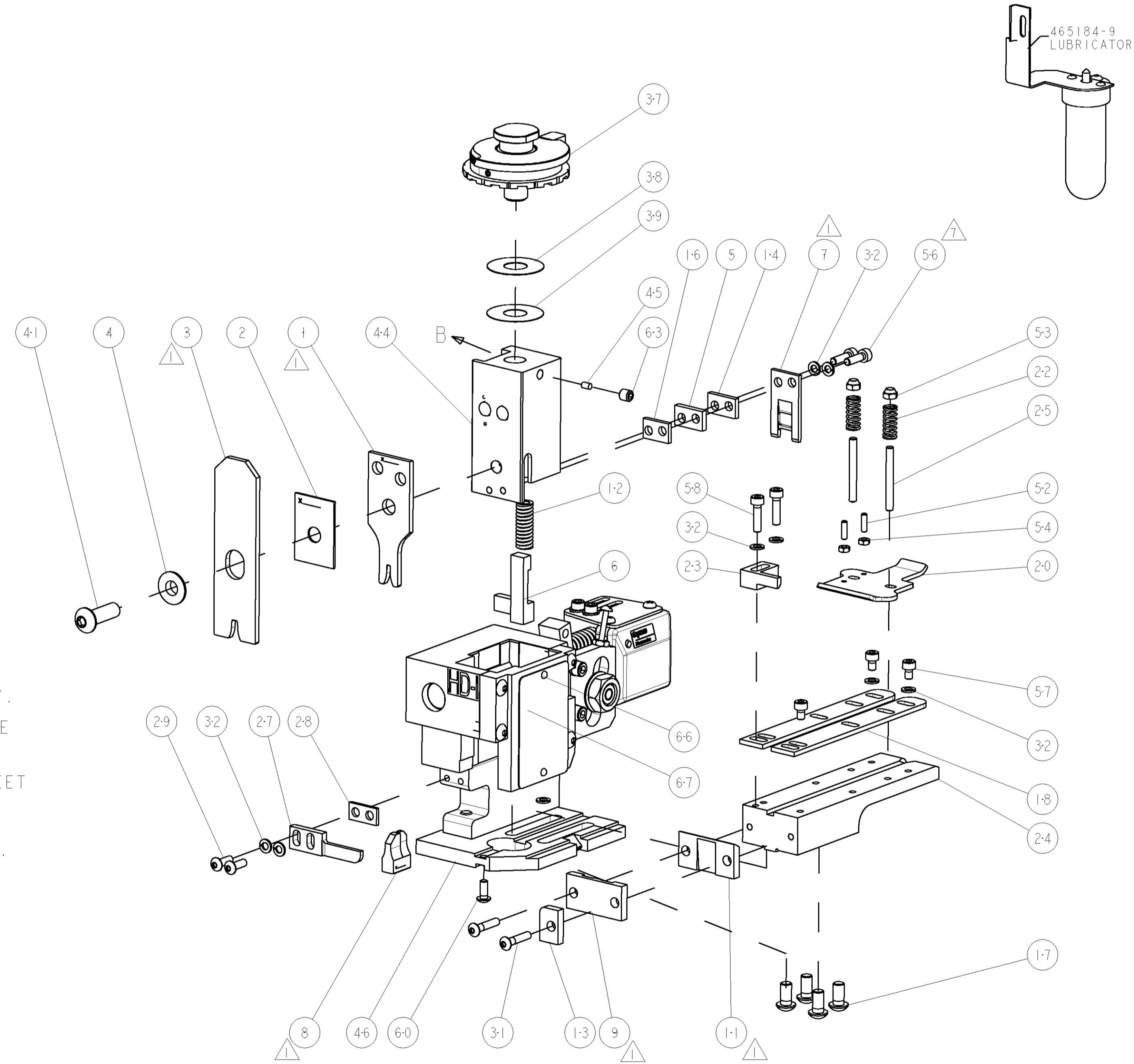
TERMINALS APPLIED
173691
170325
-
-
-
-
-
-
-
-
-
-
-
-
-
-
-
-
-
-
-
-
-

WIRE SIZE	CRIMP HEIGHT	REF SETTING
1.50mm ²	1.63 ±0.05 [.064 ±.002 IN]	A9
1.00mm ²	1.44 ±0.05 [.057 ±.002 IN]	C2
0.75mm ²	1.35 ±0.05 [.053 ±.002 IN]	C9
-	-	-
-	-	-
-	-	-
-	-	-
-	-	-
-	-	-
-	-	-
-	-	-
-	-	-
-	-	-
-	-	-
-	-	-
-	-	-

- RECOMMENDED SPARE PARTS
- 2. GREASE RAM, CAM, CAM FOLLOWER AND FEED ROD LIGHTLY.
- CERTAIN TERMINALS REQUIRE LUBRICATION. REFER TO THE APPLICATOR INSTRUCTION SHEET FOR MORE INFORMATION.
- 4. LUBRICATE DAILY PER THE APPLICATOR INSTRUCTION SHEET SUPPLIED WITH THE APPLICATOR.
- CRIMP DATA QUOTED IS SPECIFIC TO THE GERMAN MARKET.
- WIRE RANGE SHOWN IS THAT OF THE APPLICATOR.
- ITEM 56, CUT TO LENGTH AT ASSEMBLY.



*** WARNING**
 ON INSTALLATION, SET WIRE DISC TO LARGEST WIRE SIZE SETTING. USE OF SETTINGS BELOW MIN. REQUIRED CRIMP HEIGHT SETTING WILL CAUSE DAMAGE TO CRIMP TOOLING.



LOC	DIST	REV	DESCRIPTION	DATE	DWN	APVD
A	66	-	SEE ECO-06-029524	18DEC2006	DP	MC
B	-	-	ECR-08-018098	18JUL2008	MY	TE

-	1	1	1338705-4	DOCUMENTATION PACKAGE	7	1
-	1	1	461264-5	PLATE, IDENTIFICATION	6	7
-	2	2	21017-2	SCREW, DRIVE	6	6
-	1	1	3-18031-0	SCR, SET, CUP POINT M6 X 6.0	6	3
-	1	1	18024-7	SCR, BTN SKT HD CAP (M4 X 10.0)	6	0
-	2	2	1-18023-3	SCR, SKT HD CAP M4 X 16.0	5	8
-	3	3	18023-9	SCR, SKT HD CAP M4 X 6.0	5	7
-	2	2	9-18023-6	SCR, SKT HD CAP M4 X 14.0	5	6
-	2	2	18029-1	NUT, HEX, REG M3	5	4
-	2	2	986965-1	NUT, LOCK, HEX, TORQUE (M4)	5	3
-	2	2	2-18032-2	SCR, SET, FLT POINT M3 X 10.0	5	2
-	1	1	18024-3	SCR, BTN SKT HD CAP (M3 X 10.0)	4	9
-	1	1	1338676-1	CAM, UNIVERSAL POST-FEED	4	7
-	1	1	1338662-5	SUB ASSY, APPLICATOR FRAME	4	6
-	1	1	690191-1	PLUG, NYLON	4	5
-	1	1	1320998-1	RAM	4	4
-	1	1	2-18024-6	SCR, BTN SKT HD CAP (M8 X 25.0)	4	1
-	1	1	690125-1	SHIM SUB-ASSY	3	9
-	1	1	1-469367-0	SHIM	3	8
-	1	1	879103-2	FINE ADJUST HEAD ASSEMBLY	3	7
-	9	9	18025-2	WASHER, SPRG LOCK, REG M4	3	2
-	2	2	1-18024-0	SCR, BTN SKT HD CAP (M4 X 20.0)	3	1
-	2	2	18024-8	SCR, BTN SKT HD CAP (M4 X 12.0)	2	9
-	1	1	3-690451-2	SPACER, STRIPPER	2	8
-	1	1	240639-1	STRIPPER (MACHINING)	2	7
-	2	2	1320906-1	STUD, THREADED	2	5
-	1	1	1320995-7	PLATE, STRIP GUIDE	2	4
-	1	1	240825-2	PLATE, STRIP HOLD DOWN	2	3
-	2	2	4-22281-1	SPRING, DRAG	2	2
-	1	1	1338665-1	DRAG	2	0
-	2	2	1338663-5	GUIDE, LOWER STRIP	1	8
-	4	4	1-18024-8	SCR, BTN SKT HD CAP (M6 X 12.0)	1	7
-	1	1	1338708-1	SPACER, SLUG BLADE	1	6
-	1	1	240641-7	SPACER	1	4
-	1	1	2-690481-0	SPACER, HOLD DOWN	1	3
-	1	1	23846-1	SPRING, DIE	1	2
-	1	1	240833-7	PLATE, REAR SHEAR	1	1
-	1	1	3-690482-2	PLATE, FRONT SHEAR	9	9
-	1	2	3-1333216-1	ANVIL, COMBINATION	8	8
-	1	1	1-690474-7	BLADE, SLUG	7	7
-	1	1	7-455892-8	HOLD DOWN, TERMINAL	6	6
-	1	1	4-240641-6	SPACER	5	5
-	1	1	238009-1	BLOCK, FL CRIMPER SPACER	4	4
-	1	2	1-456134-2	CRIMPER, INSULATION F PREMIUM	3	3
-	1	1	455888-9	SPACER, CRIMPER	2	2
-	1	2	1-456405-5	CRIMPER, WIRE PREMIUM	1	1
-	77	-71	-1	PART NO		
-				DESCRIPTION		ITEM NO

TYCO ELECTRONICS CORPORATION
 THIS DRAWING IS UNPUBLISHED. RELEASED FOR PUBLICATION BY TYCO ELECTRONICS CORPORATION. ALL RIGHTS RESERVED.

DATE: 26OCT2006
 DWN: J. LOETHOUSE
 CHK: -

TYCO Electronics
 Tyco Electronics
 Harrisburg, PA 17105-3608

NAME: M. CLIFFORD
 DATE: 26OCT2006
 PRODUCT SPEC: -

APPLICATION SPEC: -

SIZE: A1
 CAGE CODE: 00779
 DRAWING NO: C=1529202
 RESTRICTED TO: -

CUSTOMER DRAWING
 SCALE: 3:5
 SHEET: 1 OF 1
 REV: B