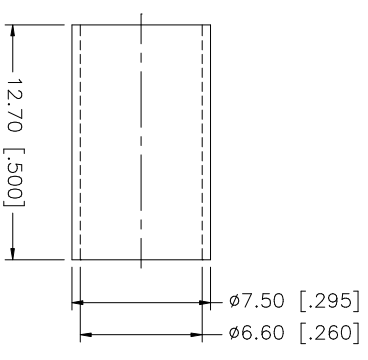
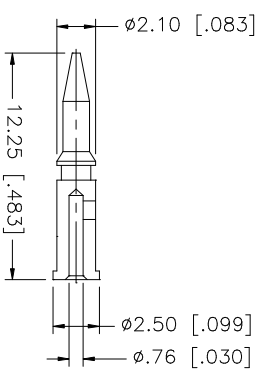
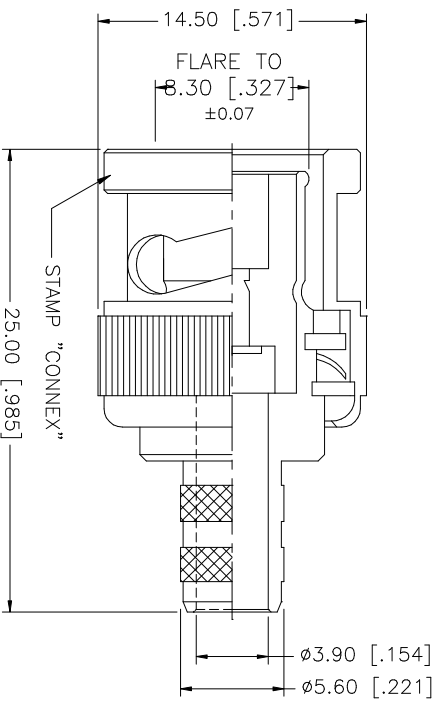
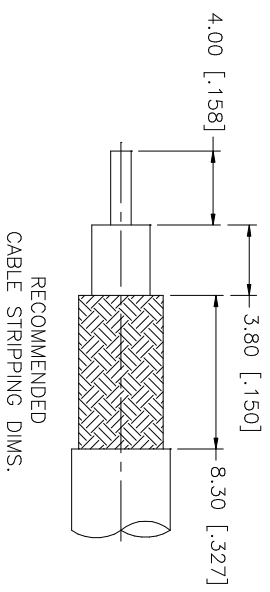


REV.	DATE	DESCRIPTION
A	11/19/03	UPDATE DRAWING FORMAT



NOTE:

1. CRIMPED FERRULE  
HEX. CRIMP SIZE .255"
2. CRIMPED CONTACT PIN  
HEX CRIMP SIZE .068"

8	UNLESS OTHERWISE SPECIFIED DIMENSIONS ARE IN MILLIMETERS. DIMENSIONS IN [ ] ARE IN INCHES AND FOR CUSTOMER REFERENCE ONLY.	APPROVALS	DATE	PART DESCRIPTION			
7	UNLESS OTHERWISE SPECIFIED TOLERANCES FOR MILLIMETERS ARE:	DRAWN	11/19/03	<p style="text-align: center;"><b>Amphenol Connex</b></p> <p style="text-align: center;">BNC CRIMP PLUG (FOR RG-59C/U CABLE)</p> <p style="text-align: center;">PART NO. 112118</p>			
6	0.5 - 8mm ± 0.20mm	CHECKED					
5	8 - 30mm ± 0.40mm	ISSUED					
4	30 - 120mm ± 0.50mm	SHEET	1 OF 1				
3	UNLESS OTHERWISE SPECIFIED TOLERANCES FOR INCHES ARE:	CAD FILE	C:/112/112118.DWG				
2	.020 - .315 = ± 0.007"	DWG. NO.	112118.DWG				
1	.315 - 1.180 = ± 0.015"	REV.	A	SIZE	A	SCALE	NA
1	1.180 - 4.724 = ± 0.020"	DO NOT SCALE DRAWING					
DESCRIPTION		MATERIAL	FINISH	QTY			
BODY		BRASS	NICKEL	1			
INSULATOR		DELRIN	NATURAL	1			
CONTACT PIN		BRASS	GOLD	1			
FERRULE		COPPER	NICKEL	1			