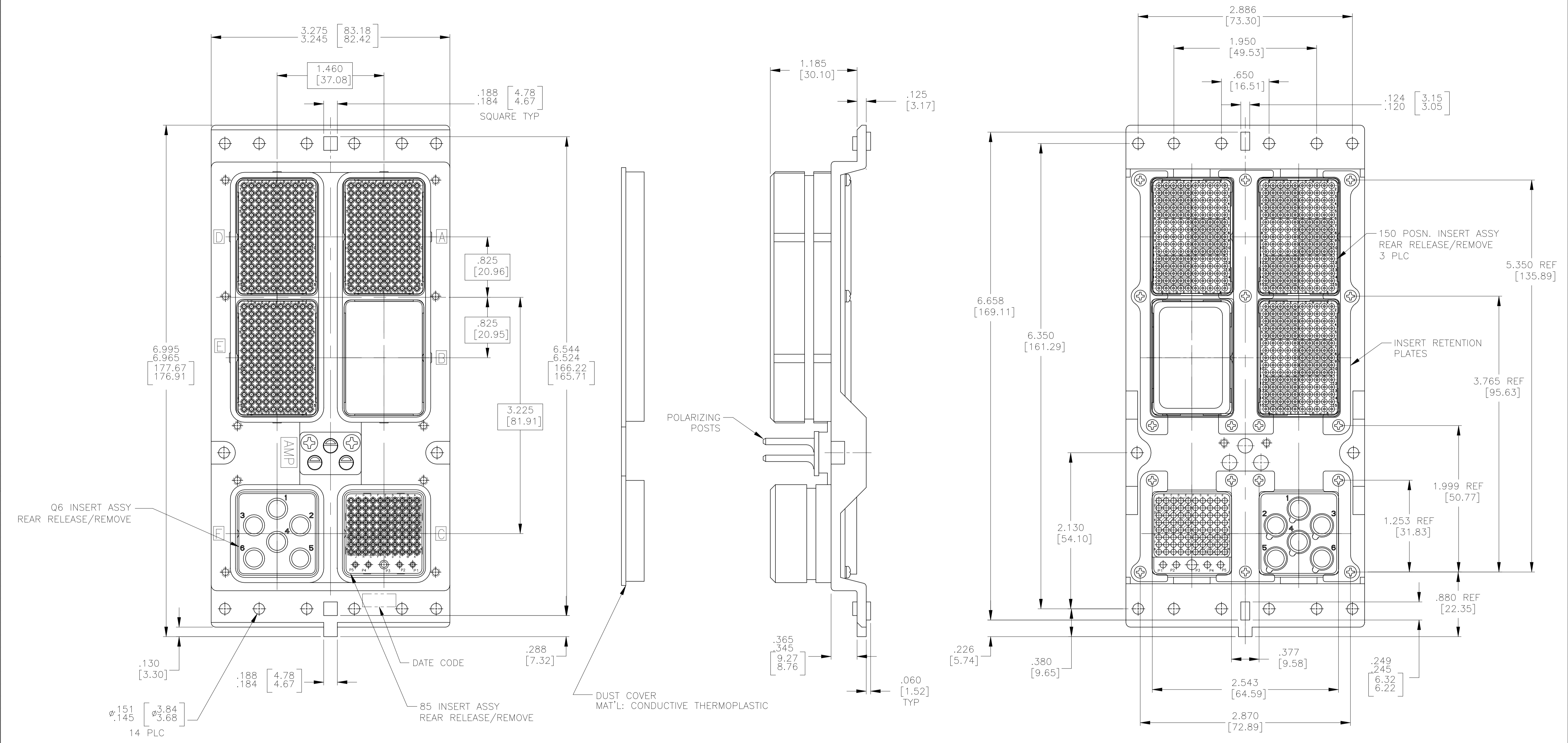


| REVISIONS | | | | |
|-----------|-------------|-------------|--------|-------|
| P | LTR | DESCRIPTION | DATE | BY |
| D | REV PER ECO | 20-004365 | 2-4-21 | CT RL |



- CONNECTOR DIMENSIONS ARE PER ARINC 600 SPECIFICATION
- DUST COVER INSTALLED FOR SHIPPING. QTY = 2
- KEYING SHOWN IN POSITION "01" FOR REFERENCE ONLY. SEE TABLE FOR KEYING POSITION. FOR POSITION "00" KEYING SHIPPED UNASSEMBLED.
- CONTACTS INCLUDED WITH ASSEMBLY BUT NOT INSTALLED:
 SIZE 22 CRIMP PIN CONTACT; TE PART NO. 208262-3; QTY=530
 SIZE 20 CRIMP SOCKET CONTACT; TE PART NO. 208267-2; QTY=4
 SIZE 16 CRIMP SOCKET CONTACT; TE PART NO. 208270-2; QTY=1
 SIZE 8 QUADRAX CONTACT; TE PART NO. 1445693-1; QTY=6
- ASSEMBLY SHOWN WITH DIE-CAST SHELL. ASSEMBLIES WITH MACHINED SHELLS MAY VARY SLIGHTLY IN APPEARANCE.

| COMPONENT | MATERIAL | FINISH |
|---------------------------------|--|--|
| SHELL | DIE CAST ALUMINUM PER ASTM-B-85 OR ASTM-B-211 6061-T6 OR ASTM-B-209 2024-T4/T351 | CHEMICAL CONVERSION COATING PER MIL-C-5541 TYPE II, CLASS 3 CHROMATE |
| INSERT RETENTION PLATES | ALUMINUM ALLOY PER ASTM-B-209 | CHEMICAL CONVERSION COATING PER MIL-C-5541 TYPE II, CLASS 3 CHROMATE |
| SCREWS AND LOCKWASHERS | STEEL | TRIVALENT CHROMATE OVER ZINC PLATE |
| POLARIZING POSTS | ZINC ALLOY PER ASTM-B-86 | ELECTROLESS NICKEL PER MIL-C-26074, CLASS 4, GRADE B |
| POLARIZING POST RETAINING PLATE | ALUMINUM ALLOY PER ASTM-B-209 | BLUE ANODIZED PER MIL-A-8625 |
| 150 & 85 INSERTS | THERMOSET | - |
| Q6 INSERT | ALUMINUM ALLOY PER ASTM-B-209 | ELECTROLESS NICKEL PER MIL-C-26074, CLASS 4, GRADE B |
| BLANK INSERT | ALUMINUM ALLOY | CHEMICAL CONVERSION COATING PER MIL-C-5541, CLASS 1A |

| | |
|-----------------|-----------|
| "01" | 2101927-1 |
| KEYING POSITION | PART NO. |

THIS DRAWING IS A CONTROLLED DOCUMENT.

STE TE Connectivity

APPROVED: K. THACKSTON

NAME: K. THACKSTON

PRODUCT SPEC: PLUG ASSY, SIZE 3, ARINC 600 (150/BLANK/85/150/150/Q6)

APPLICATION SPEC: -

SIZE: A1

WEIGHT: 0.000000

DRAWING NO: 00779

DRAWING NO: 2101927

CUSTOMER DRAWING

SCALE: 1:1

SHEET: 1 of 1

REV: D