

Technical specification:

Rated voltage: 4pos 5pos 8pos
IEC 61076-2-101 250 V 60 V 30 V

Current rating: 4/5pos 8pos
IEC 61076-2-101 4 A at 40°C 2 A at 40°C

Insulation resistance: >=100 MΩ
IEC 60512

Pollution degree: 3/2
IEC 60664-1

Degree of protection: IP 67, in mated condition
IEC 60529

Temperature range: -30°C ... +85°C
EN 60512-11-10 -40°C
EN 60512-11-4 -40°C ... +85°C
UL 2238 -30°C ... +85°C

Mating cycles: >=100
IEC 60512-9a

Materials:

Contact: CuZn, Ni b / Au 0,2 gal.

Contact carrier: PBT GF, UL 94 HB

Sealing: NBR

Socket housing: CuZn, nickel plated

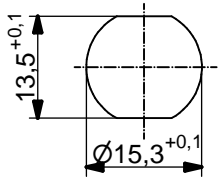
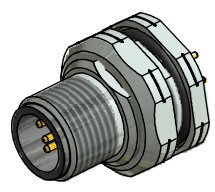
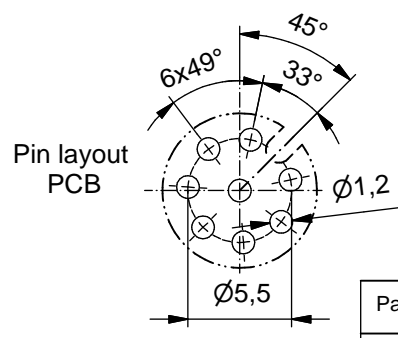
Conter nut: CuZn, nickel plated

Grouting: Polyurethane-resin, UL 94

Installation specification:

Recommended torque: 1-1,2 Nm

Conec installation tool: Torque wrench: 36-000200
Insert across flats 19: 36-000250



Minimum wall thickness 1,5mm, alternativ panel cut-out d=15,3

Part no:	Description:	Pos	Length L:	D1	D2
43-01065	SAL - 12 - FSH4 - P5,5 - 9	4	5,5mm	Ø5,0	Ø1,6
43-01069	SAL - 12 - FSH5 - P5,5 - 9	5			
43-01071	SAL - 12 - FSH8 - P5,5 - 9	8	12mm	Ø5,5	Ø1,4
43-01066	SAL - 12 - FSH4 - P12 - 9	4		Ø5,0	Ø1,6
43-01070	SAL - 12 - FSH5 - P12 - 9	5			
43-01072	SAL - 12 - FSH8 - P12 - 9	8		Ø5,5	Ø1,4

DO NOT ALTER CAD DRAWING BY HAND RoHS & REACH compliant	Index: e 21.04.15 rbo Ä5617 Data sheet revised, new layout		dim. in mm	title: Male socket M12x1, backmounting, PG9
		date	name	
		drawn 05.03.07	Fromm	
		appd. 05.03.07	Mankopf	
general tolerance:	0 ± 0,50mm 0,0 ± 0,25mm 0,00 ± 0,10mm * ± 1,5°	CONEC ®		
THIS DRAWING MAY NOT BE COPIED OR REPRODUCED IN ANY WAY, AND MAY NOT BE PASSED ON TO A THIRD PARTY WITHOUT WRITTEN PERMISSION. OWNERSHIP AND COPYRIGHT OF CONEC GmbH				
		dwg no:		43K1A312
		part no:		see table