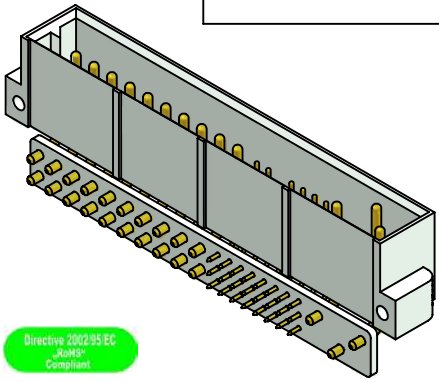
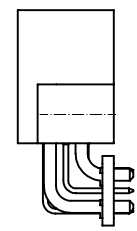


see note 5

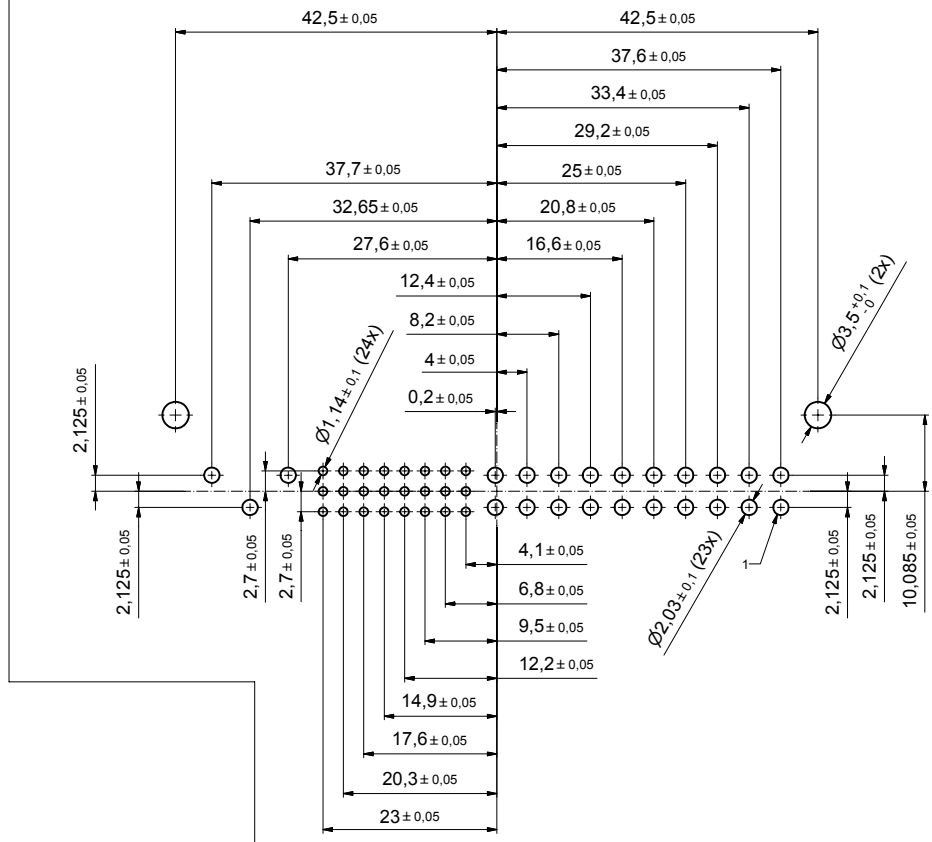


Directive 2002/95/EC
"RoHS"
Compliant



NOTES:

- MATERIALS AND FINISHES:
 - INSULATOR: GLASS FILLED PLASTIC UL 94 V-0 RATED, GREY RAL 7035
 - CONTACTS: COPPER ALLOY, PLATING: FLASH GOLD OVER NICKEL
- ELECTRICAL CHARACTERISTICS:
 - CREEPING AND CLEARANCE DISTANCE; MINIMUM:
 - CONTACT 47 TO CONTACT 46: 2,5 MM
 - CONTACT 47 TO CONTACT 45: 3,2 MM
 - CONTACT 46 TO CONTACT 45: 3,2 MM
 - CONTACT 47 TO SIGNAL CONTACTS: 6,4 MM
 - CONTACT 46 TO SIGNAL CONTACTS: 6,4 MM
 - CONTACT 45 TO SIGNAL CONTACTS: 2,0 MM
 - CONTACT CURRENT RATING:
 - POWER CONTACTS POS. 45-47: 40 AMPERES CONTINUOUS, ALL CONTACTS UNDER LOAD
 - POWER CONTACTS POS. 1-20: 28 AMPERES CONTINUOUS, ALL CONTACTS UNDER LOAD
 - SIGNAL CONTACTS: 3 AMPERES NOMINAL
 - INITIAL CONTACT RESISTANCE:
 - POWER CONTACTS: 0,0007 OHM MAX. PER IEC 512-2, TEST 2b
 - SIGNAL CONTACTS: 0,004 OHM MAX. PER IEC 512-2, TEST 2b
 - INSULATION RESISTANCE: 5 G OHM PER IEC 512-2, TEST 3a
 - VOLTAGE PROOF:
 - CONTACTS POS. 45, 46, 47: 3 kV r.m.s.
 - CONTACTS POS. 1-20: 1,5 kV r.m.s.
 - CONTACTS POS. 21-44: 1 kV r.m.s.
- WORKING TEMPERATURE: -55°C TO +125°C
- ORDER OF CONTACT MATING:
 - 1. MATE: POS. 45 / 2. MATE: POS. 46, 47 / LAST MATE: POS. 27
- CONNECTOR IS PART MARKED: **CPH47W23MARASK9X CONEC ABC**



PCB hole pattern

1	Fixing plate	10		
1	Signal contact type 4 (Pos. 27)	9		
7	Signal contact type 3 (Pos. 21,24,30,33,36,39,42)	8		
8	Signal contact type 2 (Pos. 22,25,28,31,34,37,40,43)	7		
8	Signal contact type 1 (Pos. 23,26,29,32,35,38,41,44)	6		
1	Power contact type 4 (Pos. 46)	5		
10	Power contact type 3 (Pos. 1,3,5,7,9,11,13,15,17,19)	4		
2	Power contact type 2 (Pos. 45,47)	3		
10	Power contact type 1 (Pos. 2,4,6,8,10,12,14,16,18,20)	2		
1	Case 47pos. male angled standard	1		
quantity	part description	item	dwg no. / norm	material

finish: see notes		tolerance: ISO 2768-m	scale: 2:1
date: 11.01.05		name: Mankopf	material: see notes
appd.: 11.01.05		E. Mickenbecker	title: PLUG CONNECTOR 47pos.
norm:			SOLDER PIN ANGLED, STANDARD
d-old:			CompactPCI
2 x c	Ä 3245	13.01.09	HS
2 x b	Ä 2168	21.02.05	Mkf.
rev.	description	date	name
dwg no: [Inventor]		DIN-A2	
part no: CPH47W23MARASK9X		sh: 1	

