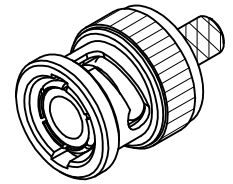


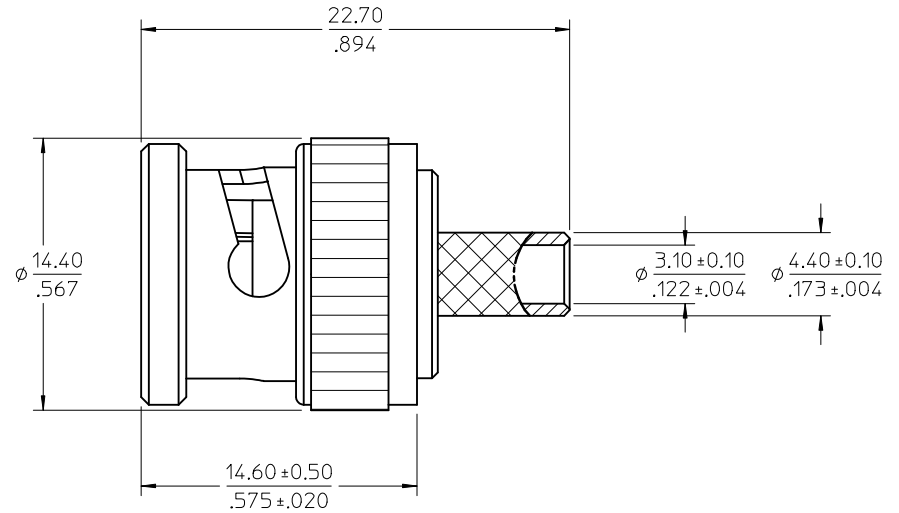
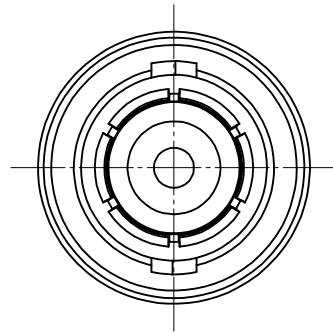
CABLE ATTACHMENTS :

INNER CONTACT ATTACHMENT--- SOLDER/CRIMP (HEX 1.69)  
 OUTER CONDUCTOR--- CRIMP (HEX 5.41)  
 ASSEMBLY INSTRUCTION--- AS-73597-0032



CONSTRUCTIONS :

COUPLING NUT---ZINC ALLOY  
 CONNECTOR BODY---BRASS  
 DIELECTRIC---POLYPROPYLENE  
 OUTER CONTACT---BRASS  
 CENTER CONTACT---BRASS  
 SPRING WASHER---BERYLLIUM COPPER  
 RETAINING RING---BRASS  
 WASHER---BRASS  
 GASKET---SILICONE RUBBER



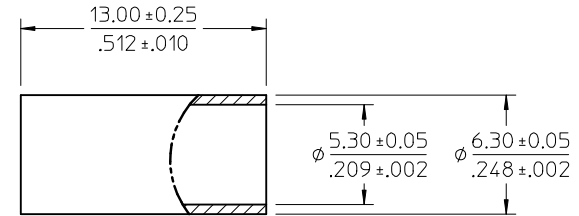
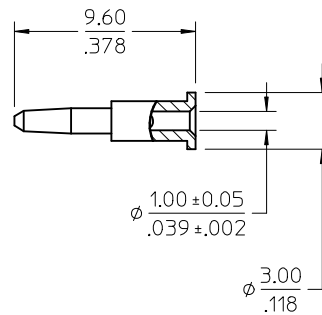
FINISHES :

COUPLING NUT--- PLATED NICKEL  
 CONNECTOR BODY---PLATED NICKEL  
 OUTER CONTACT---PLATED NICKEL  
 CENTER CONTACT---PLATED GOLD  
 SPRING WASHER---PLATED NICKEL  
 RETAINING RING---PLATED NICKEL  
 WASHER---PLATED NICKEL

MECHANICAL & ELECTRICAL CHARACTERISTICS :  
 PER PRODUCT SPECIFICATION PS-73598-0024

MATERIALS & FINISHES :  
 PER PRODUCT SPECIFICATION PS-73598-0024

PACKAGING : BY TRAY



P/N: 73171-3120 SINGLE ASSEMBLY 73104-5003 PER BAG

CHG: PKG BY TRAY PER RF15-E342 EC NO: URF2016-0265 DRW: CWE102 2015/10/01 CHKD: APPR: YCHENG 2015/10/07 REV: 3	QUALITY SYMBOLS	GENERAL TOLERANCES (UNLESS SPECIFIED)	DIMENSION STYLE	SCALE	DESIGN UNITS	THIRD ANGLE PROJECTION
	▽=0	mm INCH	MM/IN	METRIC	⊙	
	▽=0	4 PLACES ± --- ± ---	DRAWN BY DATE	TITLE	BNC PLUG STRAIGHT RG58/.141, CRIMP/CRIMP BNC-PC	
	▽=0	3 PLACES ± --- ± ---	IRIS WANG 1991/01/18	BNC-PC	<b>molex</b>	
	2 PLACES ± --- ± ---	CHECKED BY DATE	APPROVED BY DATE	731045003	SD-73104-5003	SHEET NO. 1 OF 1
	1 PLACE ± --- ± ---	MHUANG 2010/07/22	MATERIAL NO.	THIS DRAWING CONTAINS INFORMATION THAT IS PROPRIETARY TO MOLEX INCORPORATED AND SHOULD NOT BE USED WITHOUT WRITTEN PERMISSION		
	0 PLACE ± --- ± ---		SIZE C			
	ANGULAR ± --- °	DRAFT WHERE APPLICABLE MUST REMAIN WITHIN DIMENSIONS				