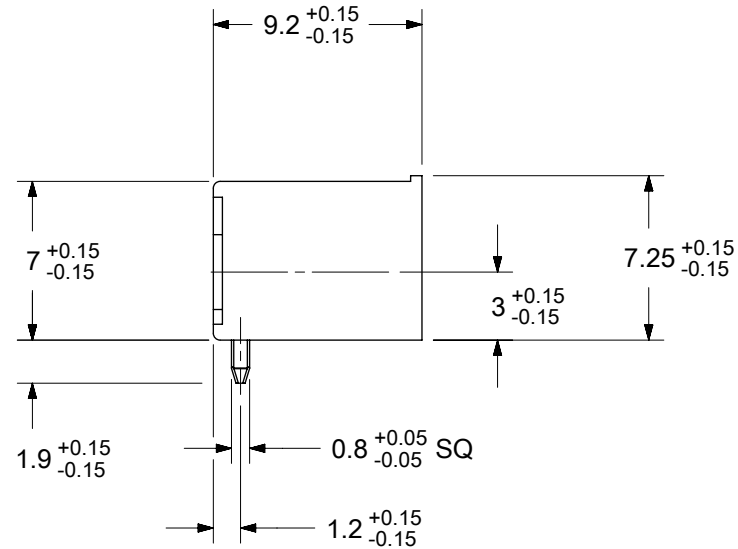
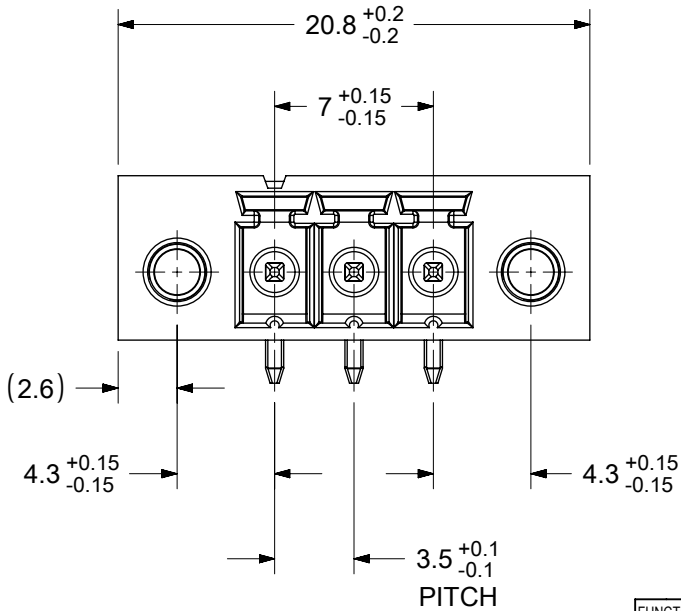


PCB LAYOUT



SPECIFICATIONS

MATERIAL:

- 1. HOUSING: PA46 GF UL94V-0
- 2. TERMINAL: TIN PLATED COPPER ALLOY

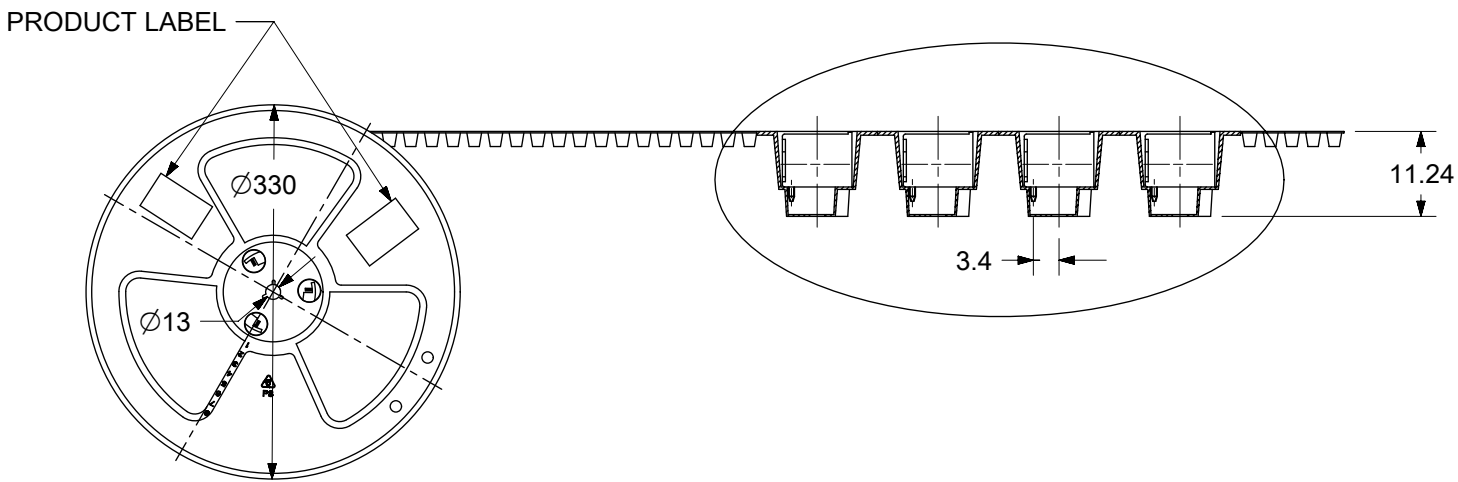
ELECTRICAL RATINGS:

- 1. MAXIMUM VOLTAGE: 300V (PER UL)
- 2. MAXIMUM CURRENT: 11A (PER UL)

| | | | | | | | | | | | |
|--|---|------------------------|-------|------------------------------|-----------------------------------|-----------------|--|--------------|--------------------------------|----------|--|
| FUNCTIONAL SYMBOLS | THIS DRAWING CONTAINS INFORMATION THAT IS PROPRIETARY TO MOLEX ELECTRONIC TECHNOLOGIES, LLC AND SHOULD NOT BE USED WITHOUT WRITTEN PERMISSION | | | | | | | | | | |
| | DIMENSION UNITS | | SCALE | | CURRENT REV DESC: INITIAL RELEASE | | | | | | |
| | mm | | 3:1 | | | | | | | | |
| | GENERAL TOLERANCES (UNLESS SPECIFIED) | | | | | | | | | | |
| ANGULAR TOL | | ± ° | | EC NO: 645226 | | | | | 3.50MM PITCH HEADER, 3 POLES | | |
| 4 PLACES | | ± --- | | DRWN: ABENJAMINLW 2020/07/13 | | | | | HORIZONTAL, HIGH TEMP HOUSING, | | |
| 3 PLACES | | ± --- | | CHK'D: DACHAMMER 2020/09/10 | | | | | TAPE & REEL PACKAGING | | |
| 2 PLACES | | ± --- | | APPR: JFMURPHY 2020/10/19 | | | | | PRODUCT CUSTOMER DRAWING | | |
| 1 PLACE | | ± --- | | INITIAL REVISION: | | | | | DOCUMENT NUMBER | | |
| 0 PLACES | | ± --- | | DRWN: ABENJAMINLW 2020/07/13 | | | | | 395063003 | | |
| | | | | APPR: JFMURPHY 2020/10/19 | | | | | DOC TYPE | | |
| DRAFT WHERE APPLICABLE MUST REMAIN WITHIN DIMENSIONS | | THIRD ANGLE PROJECTION | | DRAWING | | SERIES | | CUSTOMER | | REVISION | |
| | | | | A-SIZE | | 39506 | | PSD | | 000 | |
| | | | | | | MATERIAL NUMBER | | 000 | | A | |
| | | | | | | 395063003 | | SHEET NUMBER | | 1 OF 2 | |

| | | | | |
|-----------------|----|--------------|------------|----------|
| DOCUMENT STATUS | P1 | RELEASE DATE | 2020/10/19 | 17:06:28 |
|-----------------|----|--------------|------------|----------|

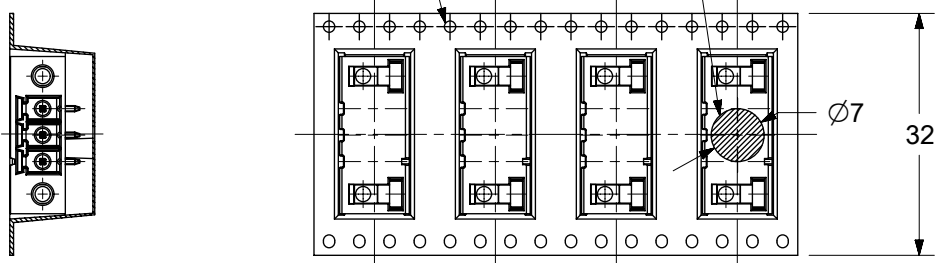
D



C

SPROCKET HOLES PICK & PLACE AREA

TAPE & REEL PACKAGING DETAILS



B

A

| | | | | | | | | | | | | | | |
|--|---|------------------------|-------|-----------------------------------|--------|-----------------|----------|--|--------------|--|--------------------------------|----------|------------------------------|----------|
| FUNCTIONAL SYMBOLS | THIS DRAWING CONTAINS INFORMATION THAT IS PROPRIETARY TO MOLEX ELECTRONIC TECHNOLOGIES, LLC AND SHOULD NOT BE USED WITHOUT WRITTEN PERMISSION | | | | | | | | | | | | | |
| | $\nabla_A = 0$ $\nabla_E = 0$ $\nabla_P = 0$ | DIMENSION UNITS | SCALE | CURRENT REV DESC: INITIAL RELEASE | | | | | | | | | | |
| GENERAL TOLERANCES (UNLESS SPECIFIED) | | mm | 1:1 | EC NO: 645226 | | | | | | | | | 3.50MM PITCH HEADER, 3 POLES | |
| ANGULAR TOL | | ± | ° | DRWN: ABENJAMINLW 2020/07/13 | | | | | | | HORIZONTAL, HIGH TEMP HOUSING, | | | |
| 4 PLACES | | ± | --- | CHK'D: DACHAMMER 2020/09/10 | | | | | | | TAPE & REEL PACKAGING | | | |
| 3 PLACES | | ± | --- | APPR: JFMURPHY 2020/10/19 | | | | | | | PRODUCT CUSTOMER DRAWING | | | |
| 2 PLACES | | ± | --- | INITIAL REVISION: | | | | | | | DOCUMENT NUMBER | DOC TYPE | DOC PART | REVISION |
| 1 PLACE | | ± | --- | DRWN: ABENJAMINLW 2020/07/13 | | | | | | | 395063003 | PSD | 000 | A |
| 0 PLACES | | ± | --- | APPR: JFMURPHY 2020/10/19 | | | | | | | | | | |
| DRAFT WHERE APPLICABLE MUST REMAIN WITHIN DIMENSIONS | | THIRD ANGLE PROJECTION | | DRAWING | SERIES | MATERIAL NUMBER | CUSTOMER | | SHEET NUMBER | | | | | |
| | | | | A-SIZE | 39506 | 395063003 | | | 2 OF 2 | | | | | |