

PART NUMBER	REV	FIRST USED	POWER UNIT	FEED TYPE
567750-1	D	354500-3	LEADMAKER	MECHANICAL-POST FEED

- 1 RECOMMENDED SPARE PARTS.
- 2 GREASE LIGHTLY.
- 3 AFTER ASSEMBLY OF APPLICATOR, PROPER SPRING PRESSURE (ITEM 34) CAN BE OBTAINED BY TIGHTENING SET SCREW (ITEM 105) UNTIL CONTACT IS MADE WITH SPACER (ITEM 32) THEN TIGHTEN AN ADDITIONAL 5 1/2-6 REVOLUTIONS.
- 4 DO NOT EXCEED 80 CRIMPS PER MINUTE WITH THIS APPLICATOR.
- 5 APPLY LOCTITE 222.

1	-	3-21081-2	SHCS, 1/4-20 X 1	142
2	-	2-21000-0	SCR, SKT HD CAP 6-32 X .500	141
1	-	1804318-1	BRACKET, MAGNET HOLDER	140
1	-	1804303-1	BRACKET, COUNTER MOUNTING	139
2	-	21024-3	WASHER, SPRG LOCK, REG NO 6	138

TERMINAL NAME: FLAG, FASTON, .187 SERIES

62817	-	-	AMP TERMINAL - AMP CRIMP SPECS			
-	-	-	PAB LTR	CRIMP HEIGHT	WIRE SIZE	Ø SOLDER
-	-	-	A	.040±.002	16	-
-	-	-	B	.037±.002	18 OR (2)20	-
-	-	-	C	.035±.002	20	-
-	-	-	D	-	-	-
-	-	-	CRIMP	SIZE	TYPE	RANGE
-	-	-	WIRE	.140	TAB LOC	20-16
-	-	-	INSUL	.200	O	.170-.225

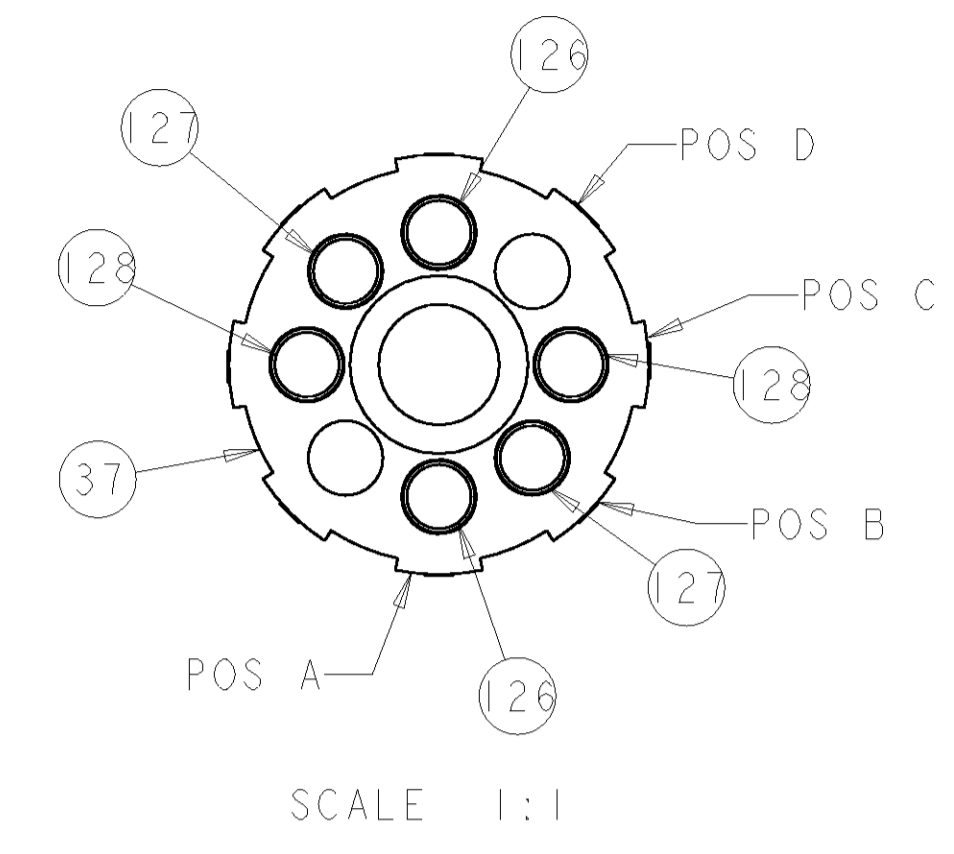
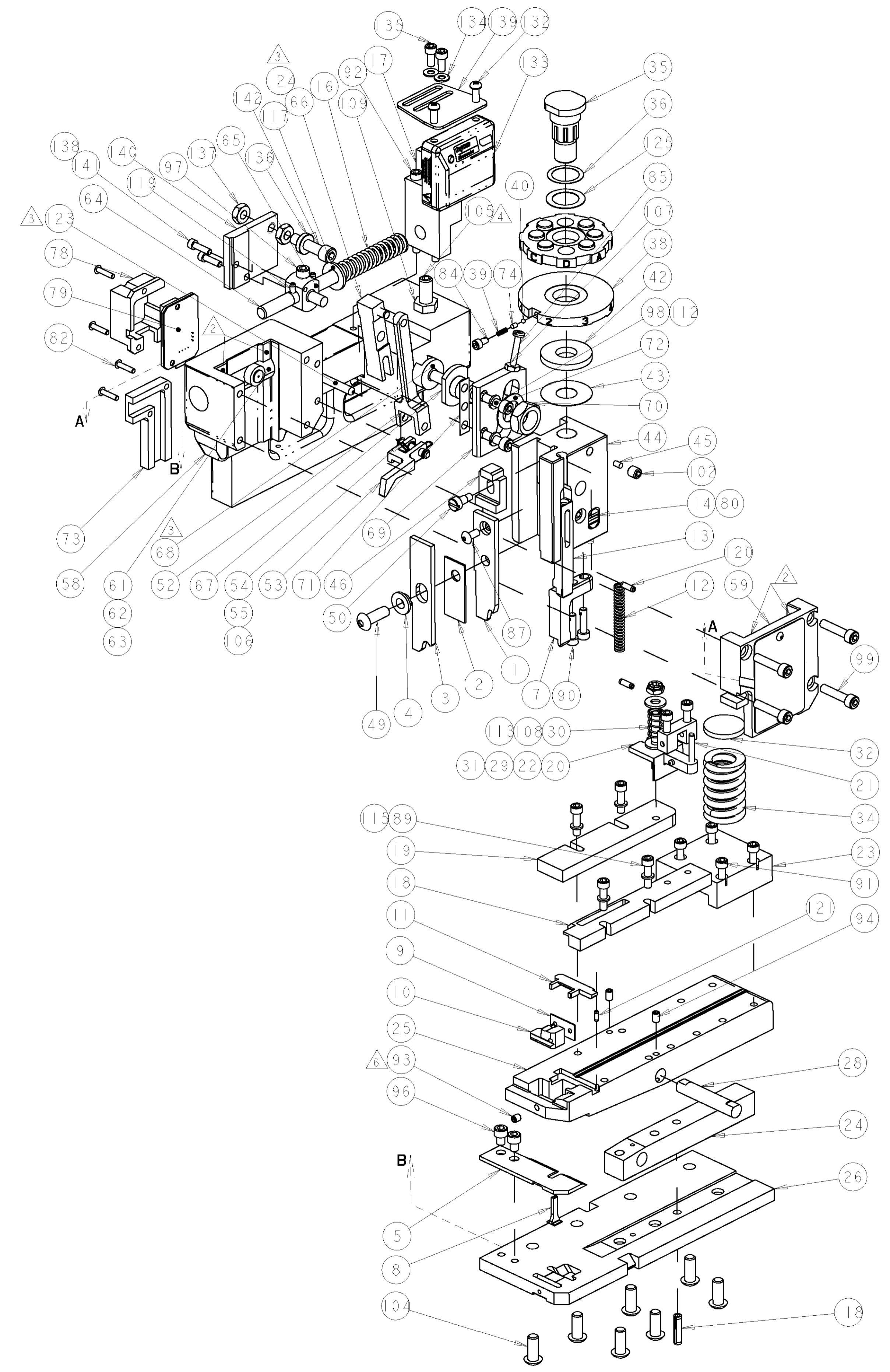
QTY	REV	PART NUMBER	DESCRIPTION	ITEM NO
2	-	22593-1	NUT, HEX, JAM ,SS	137
1	-	1804310-1	MAGNET, RING	136
2	-	2-21000-6	SCR, SKT HD CAP 8-32 X .375	135
2	-	18028-2	WASHER, FLAT, REG M4	134
1	-	1804300-1	ASSEMBLY, APPLICATOR COUNTER	133
2	-	994991-5	SCREW, OVL HD, M4X12	132
2	-	4-354779-8	PIN, WIRE DISC (MARKED)	128
2	-	4-354779-6	PIN, WIRE DISC (MARKED)	127
2	-	4-354779-2	PIN, WIRE DISC (MARKED)	126
1	-	986950-1	WASHER, FLAT PRECISION	125
1	-	1-21030-2	PIN, DOWEL .1875 X .625	124
1	-	1-21030-6	PIN, DOWEL .1875 X 1.250	123
1	-	3-21028-2	PIN, SLOTTED SPRING .094 X .250	121
2	-	4-21028-9	PIN, SLOTTED SPRING .125 X .375	120
2	-	5-21028-1	PIN, SLOTTED SPRING .125 X .500	119
1	-	21029-5	PIN, SLOTTED SPRING .188 X .750	118
1	-	21899-4	WASHER, FLAT	117
4	-	21024-4	WASHER, SPRG LOCK, REG NO 8	115
2	-	21899-2	WASHER, FLAT	113
2	-	21024-5	WASHER, SPRG LOCK, REG NO 10	112
1	-	1-22202-7	NUT, HEX, JAM 5/16-24/UNF	109
1	-	21022-3	NUT, HEX, SELF-LOCKING, THIN, 10-32	108
1	-	21018-5	NUT, HEX, REG 6-32	107
2	-	21045-3	RING, RETAIN, EXTERN, 3/16 CRESCENT	106
1	-	8-21007-5	SCR, SET, CUP POINT 5/16-24 X .750	105
7	-	2-22733-8	SCR, BHSC, SELF-LOCKING, 1/4-20 X .625	104
1	-	21009-2	SCR, SET, SELF LOCKING 1/4-20 X .250	102
1	-	3-21000-9	SCR, SKT HD CAP 10-32 X 1.000	100
4	-	3-21000-8	SCR, SKT HD CAP 10-32 X .875	99
2	-	3-21000-6	SCR, SKT HD CAP 10-32 X .625	98
1	-	3-21000-4	SCR, SKT HD CAP 10-32 X .375	97
2	-	7-21000-5	SCR, SKT HD CAP 10-32 X .250	96
2	-	4-21006-0	SCR, SET, CUP POINT 8-32 X .250	94
1	-	21061-9	SCR, SET, CONE POINT 8-32 X .250	93
2	-	9-21000-3	SCR, SKT HD CAP 8-32 X 2.000	92
4	-	2-21000-9	SCR, SKT HD CAP 8-32 X .750	91
2	-	1-23030-1	SCR, SKT HD CAP, S-LOCK, 8-32 X .625	90
6	-	2-21000-8	SCR, SKT HD CAP 8-32 X .625	89
1	-	2-21002-1	SCR, BTN SKT HD CAP 8-32 X .375	87
1	-	6-23715-5	SCR, PAN SLT HD MACH 6-32 X 1.500	85
1	-	23030-1	SCR, SKT HD CAP, S-LOCK, 6-32 X .25	84
4	-	1-21002-5	SCR, BTN SKT HD CAP 4-40 X .500	82
1	-	2-21006-9	SCR, SET, CUP POINT 6-32 X .250	80
1	-	856822-1	PCB ASSEMBLY	79
1	-	856825-1	COVER, PCB	78
1	-	690603-1	SPRING ASSIST AMP-O-MATOR APPLICATOR	74
1	-	314867-1	COVER, FLAT FLEX	73
1	-	458109-1	WASHER, SPECIAL ADJUST PLATE	72
1	-	690517-1	SPACER, ADJ PLATE	71
1	-	22594-8	NUT, HEX, JAM	70
1	-	240628-1	PLATE, ADJUSTING	69

LOC	DIST	REV	DATE	BY	APPD
A	66	D	27MAR2007	EW	TE

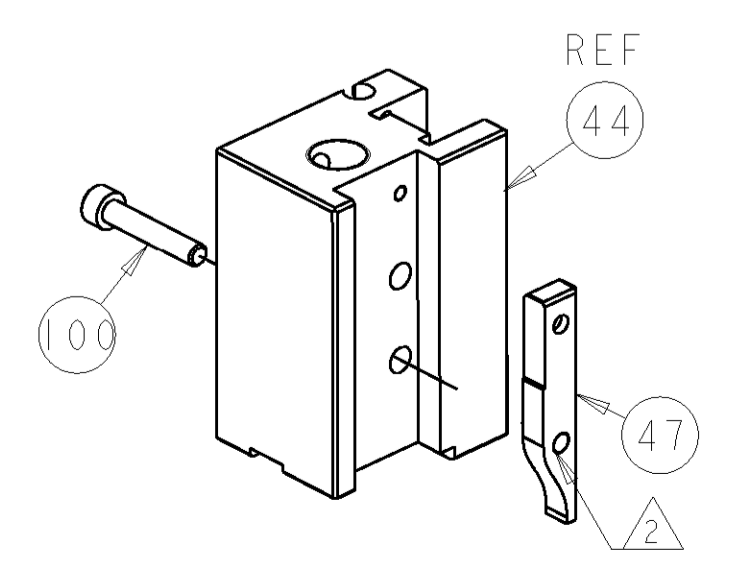
QTY	REV	PART NO	DESCRIPTION	ITEM NO
1	-	240626-1	SHAFT-PIVOT AMP-O-MATOR	68
1	-	240633-1	BUSHING	67
1	-	240630-1	LEVER, INTERMEDIATE	66
1	-	1804317-1	BLOCK, PIVOT	65
1	-	1633286-1	SCREW, ADJUSTMENT	64
1	-	240659-3	PIN, CAM ROLLER	63
1	-	240658-1	ROLLER-CAM	62
1	-	240631-1	ROD, FEED	61
1	-	768623-1	MODIFIED CAP ASSEMBLY	59
1	-	768680-1	HOUSING, MODIFIED	58
1	-	240624-1	PIN, FEED FINGER	55
1	-	691499-1	SPRING-FEED FINGER	54
1	-	454568-2	FINGER, FEED	53
1	-	240634-1	LEVER, TERMINAL FEED	52
1	-	22353-8	SCR, SHLD, SLOT HD, 3/16 DIA	50
1	-	3-21002-5	SCR, BTN SKT HD CAP 1/4-20 X .750	49
1	-	238015-1	CAM, POST FEED 1 5/8	47
1	-	690578-1	INSULATION ADJUST BLOCK	46
1	-	690191-1	PLUG, NYLON	45
1	-	856807-1	RAM, SPECIAL	44
1	-	690125-1	SHIM SUB-ASSY	43
1	-	1-690124-1	WASHER, RAM (.150)	42
1	-	23241-6	BALL, STEEL	40
1	-	690170-1	SPRING, COMPRESSION	39
1	-	690142-1	DISC, INSULATION	38
1	-	354777-1	WIRE DISC, ASSEMBLY	37
1	-	22480-5	WASHER, WAVE SPRING	36
1	-	690212-1	POST, RAM	35
1	-	3-23846-5	SPRING, DIE	34
1	-	690573-1	SPACER, SPRING	32
1	-	454569-1	MOUNT, DRAG	31
1	-	1-22354-8	STUD, THREADED	30
1	-	21030-2	PIN, DOWEL .1250 X .500	29
1	-	690582-1	PIN, HINGE	28
1	-	768624-1	PLATE, BASE, COM	26
1	-	856801-1	MODIFIED HINGE BAR	25
1	-	690571-1	STABILIZER	24
1	-	690585-1	BLOCK, SPRING PRESSURE	23
1	-	1-22282-3	SPRING, COMPRESSION	22
1	-	21030-6	PIN, DOWEL .1250 X 1.000	21
1	-	454570-1	DRAG, STOCK	20
1	-	454573-1	GUIDE, STRIP, REAR	19
1	-	454571-2	GUIDE, FRONT STRIP	18
1	-	1804319-1	GUIDE, FEED ROD	17
1	-	4-22284-9	SPRING, COMPRESSION	16
1	-	853498-1	MAGNET ASSEMBLY	14
1	-	692134-7	TERMINAL POSITIONER	13
1	-	5-22280-5	SPRING, COMPRESSION	12
1	-	454712-5	PLATE, REAR SHEAR	11
1	-	683641-1	ANVIL, INSERT	10
1	-	690569-2	PLATE, SHEAR, FRONT	9
1	-	856804-1	ANVIL, COM, 2-AXIS	8
1	-	454575-6	BLADE, SHEAR	7
1	-	856802-1	PLATE, ANVIL RETAINING	5
1	-	690574-1	SPACER, TUBULAR	4
1	-	690764-1	INSULATION CRIMPER	3
1	-	681153-1	SPACER, CRIMPER	2
1	-	690716-3	CRIMPER, WIRE PREMIUM	1

DIMENSIONS: IN		TOLERANCES UNLESS OTHERWISE SPECIFIED:		DWG: WEAVER 07FEB2007		Tyco Electronics Harrisburg, PA 17105-3608	
		0 PLC ± 1 PLC ± 2 PLC ± 3 PLC ± 4 PLC ± ANGLES ±		CHG: T. ELBIN 07FEB2007 APVD: T. ELBIN 07FEB2007		NAME: END FEED COM HINGE BAR APPLICATOR PRODUCT SPEC: - APPLICATION SPEC: -	
MATERIAL: -		FINISH: -		WEIGHT: -		SIZE: A100779C=567750 SCALE: 1:1 SHEET 1 OF 2 REV D	
CUSTOMER DRAWING				CUSTOMER VIEWABLE ASSEMBLY			

LOC		DIST		REVISIONS			
A	66	P	LTR	DESCRIPTION	DATE	DWN	APVD
		-	-	SEE SHEET 1	-	-	-



POST-FEED 1-5/8 STROKE



ROTATED 180°

DIMENSIONS:		TOLERANCES UNLESS OTHERWISE SPECIFIED:		DWN: B. WEAVER 07FEB2007		Tyco Electronics Harrisburg, PA 17105-3608	
IN		0 PLC ±		CHK: T. ELBIN 07FEB2007		NAME: END FEED COM HINGE BAR APPLICATOR	
		1 PLC ±		APVD: T. ELBIN 07FEB2007		PRODUCT SPEC: -	
		3 PLC ±		PRODUCT SPEC: -		APPLICATION SPEC: -	
		4 PLC ±		WEIGHT: -		SIZE: CAGE CODE: DRAWING NO: A100779C-567750	
		ANGLES ±		FINISH: -		RESTRICTED TO: -	
MATERIAL: -		FINISH: -		CUSTOMER DRAWING		SCALE: 3:5 SHEET 2 OF 2 REV D	

CUSTOMER VIEWABLE ASSEMBLY