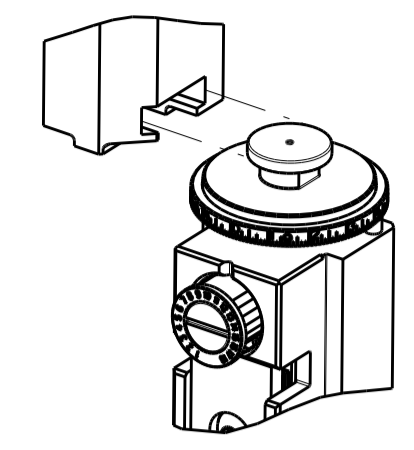


| PART NUMBER | REVISION | DESCRIPTION                      | FEED TYPE  |
|-------------|----------|----------------------------------|------------|
| 2151074-1   | M        | FINE CRIMP HEIGHT ADJUST         | MECHANICAL |
| 2151074-2   | M        | FINE CRIMP HEIGHT ADJUST         | PNEUMATIC  |
| 7-2151074-1 | M        | MECHANICAL AND CRIMP TOOLING KIT | MECHANICAL |
| 7-2151074-2 | M        | PNEUMATIC AND CRIMP TOOLING KIT  | PNEUMATIC  |
| 7-2151074-7 | L        | CRIMP TOOLING KIT                | -          |

ATLANTIC VERSION TERMINATOR INTERFACE ADAPTER



| APPLICATOR DATA |                |      |
|-----------------|----------------|------|
| CRIMP           | SIZE           | TYPE |
| WIRE            | 2.03 mm [.080] | F    |
| INSUL           | 3.30 mm [.130] | F    |

APPLICATOR INSTRUCTIONS  
408-35042

| TERMINAL DATA: TE TERMINAL                   |                | TE CRIMP SPECIFICATION       |                |
|--|----------------|------------------------------|----------------|
| TERMINAL NAME: AMP POWER DOUBLE LOCK CONTACT |                |                              |                |
| WIRE STRIP LENGTH                            |                | INSULATION DIAMETER RANGE    |                |
| 3.00-4.00 mm [.118-.157 IN]                  |                | Ø1.80-3.10 mm [.071-.122 IN] |                |
| TERMINAL APPLICATION SPECIFICATION           | (A)114-5175    |                              |                |
|  | (B)114-61016   |                              |                |
| TERMINALS APPLIED                            |                |                              |                |
| TE TERMINAL                                  | TE TERMINAL    | TE TERMINAL                  | TE TERMINAL    |
| (A) 177915-1                                 | (A) 177915-9   | (A) 177917-1                 | (A) 1-177917-1 |
| (A) 177915-2                                 | (A) 5-177915-1 | (A) 177917-2                 | (A) 1-177917-2 |
| (B) 1743729-1                                |                |                              |                |

| WIRE SIZE         | CRIMP HEIGHT mm [INCH]     | CRIMP HEIGHT REFERENCE SETTING |
|-------------------|----------------------------|--------------------------------|
| 16 AWG OR 1.27mm2 | 1.29+/-0.05 [.051+/-0.002] | 5.3                            |
| 18 AWG OR 0.89mm2 | 1.15+/-0.05 [.045+/-0.002] | 6.5                            |
| 20 AWG OR 0.51mm2 | 1.05+/-0.05 [.041+/-0.002] | 7.6                            |

- 1 RECOMMENDED SPARE PARTS
- 2 REFER TO SUPPLIED INSTRUCTION SHEET FOR CLEANING, LUBRICATION AND STORAGE OF APPLICATOR.
- 3 PLY PART NUMBER 1-23419-5 LOCTITE TO THREADS OF ITEM 180. APPLY PART NUMBER 2-23419-6 LOCTITE TO THREADS OF ITEM 242.
- 4 CRIMP HEIGHT REFERENCE SETTING WAS THE SETTING USED WHEN THE APPLICATOR WAS QUALIFIED AT THE FACTORY. ADJUSTMENT MAY BE NECESSARY WHEN RUNNING APPLICATOR IN THE FIELD.
- 5 TERMINAL LUBRICANT IS RECOMMENDED.
- 6. UNLESS SPECIFIED OTHERWISE TORQUE VALUES SHALL BE USED PER DOCUMENT, 101-35000.
- 7 ITEM 34 IS APPLY FOR FEMALE TERMINAL 177915 & 1743729; ITEM 36 IS APPLY FOR MALE TERMINAL 177917.

**\*WARNING**  
ON INSTALLATION, SET WIRE DISC TO CRIMP HEIGHT REFERENCE SETTING FOR LARGEST WIRE SIZE. CRIMP HEIGHT REFERENCE SETTINGS GREATER THAN THE VALUE SHOWN MAY CAUSE DAMAGE TO THE CRIMP TOOLING, REFER TO THE INSTRUCTION SHEET FOR PROPER SETUP AND ADJUSTMENTS.

**ATLANTIC VERSION**  
Shown on sheets 1 of 4 & 2 of 4  
(Pacific version shown on sheets 3 of 4 & 4 of 4)

| LOC | DIST | REVISIONS |     |               |           |     |      |
|-----|------|-----------|-----|---------------|-----------|-----|------|
| A   | 66   | P         | LTN | DESCRIPTION   | DATE      | OWN | APVD |
|     |      | J         |     | ECR-17-004390 | 28MAR2017 | TB  | TE   |
|     |      | K         |     | ECR-18-014299 | 10SEP2018 | FZ  | KZ   |
|     |      | L         |     | ECR-20-005624 | 20APR2020 | MZ  | YY   |
|     |      | M         |     | ECR-20-009461 | 02JUL2020 | FJ  | RK   |

|   |     |     |     |     |             |                                     |     |
|---|-----|-----|-----|-----|-------------|-------------------------------------|-----|
| - | 1   | 1   | 1   | 1   | 1803078-4   | SPACER, PRECISION                   | 261 |
| - | 1   | -   | 1   | -   | 2119641-1   | FEED CAM, AIR FEED                  | 248 |
| - | 1   | 1   | 1   | 1   | 2119082-7   | CAM, SNAIL, INSULATION ADJUSTMENT   | 244 |
| - | 1   | 1   | 1   | 1   | 2079764-1   | WASHER, WAVE SPRING, CREST-TO-CREST | 243 |
| 3 | -   | 1   | 1   | 1   | 2119083-1   | RETAINER, INSULATION DIAL           | 242 |
| - | 1   | 1   | 1   | 1   | 7-18023-7   | SCR, SKT HD CAP M3 X 4.0            | 241 |
| - | -   | 1   | -   | 1   | 2119580-1   | MECHANICAL FEED ASSEMBLY            | 239 |
| - | 1   | -   | 1   | -   | 2844940-1   | AIR FEED MODULE                     | 238 |
| 3 | -   | 1   | 1   | 1   | 1-1752354-3 | STANDOFF, HOLD-DOWN                 | 180 |
| - | 1   | 1   | 1   | 1   | 1803043-9   | CRIMPER, SPECIAL PREMIUM            | 178 |
| - | 1   | 1   | 1   | 1   | 6-993111-6  | PIN, SLOTTED SPRING 3.0 X 14.0      | 177 |
| - | 1   | 1   | 1   | 1   | 8-22280-7   | SPRING, COMPRESSION                 | 176 |
| - | 1   | 1   | 1   | 1   | 1752353-2   | GUIDE PIN, HOLDDOWN                 | 175 |
| - | 1   | 1   | 1   | 1   | 1901680-2   | GUIDE PIN, HOLDDOWN                 | 174 |
| - | REF | REF | REF | REF | 994970-2    | COUNTER, MAGNETIC                   | 164 |
| - | 1   | 1   | 1   | 1   | 1-18028-2   | WASHER, FLAT, REG M4                | 119 |
| 5 | -   | 1   | 1   | 1   | 2119955-1   | ASSY, LUBRICATOR, SIDE FEED         | 113 |
| - | 1   | 1   | 1   | 1   | 2844908-1   | SCREW, LOCKING                      | 99  |
| - | 1   | 1   | 1   | 1   | 2844907-1   | POST, LOCKING                       | 98  |
| - | 1   | 1   | 1   | 1   | 1-455888-6  | SPACER, CRIMPER                     | 82  |
| - | 1   | 1   | 1   | 1   | 1803607-3   | DOCUMENTATION PACKAGE               | 71  |
| - | 1   | 1   | 1   | 1   | 2119740-1   | TAG, IDENTIFICATION                 | 67  |
| - | 2   | 2   | 2   | 2   | 2168078-1   | SCREW, DRIVE, RH, RoHS, 2 x .188    | 66  |
| - | 1   | 1   | 1   | 1   | 2168083-2   | SCR, SKT HD CAP, RoHS, M4 X 8.0     | 60  |
| - | 1   | 1   | 1   | 1   | 5-18022-5   | SCR, HEX HD CAP, M4 X 6.0           | 59  |
| - | 1   | 1   | 1   | 1   | 1338685-1   | PAWL, FEED                          | 56  |
| - | 4   | 4   | 4   | 4   | 2168083-3   | SCR, SKT HD CAP, RoHS, M4 X 12.0    | 54  |
| - | 1   | 1   | 1   | 1   | 1-5018030-0 | NUT, HEX, REG, RoHS, M3.5           | 52  |
| - | 1   | 1   | 1   | 1   | 1-1901681-9 | HOLDDOWN, TERMINAL                  | 51  |
| - | 1   | 2   | 1   | 2   | 18023-9     | SCR, SKT HD CAP M4 X 6.0            | 49  |
| - | -   | 1   | -   | 1   | 2119652-1   | FEED CAM, PRE FEED                  | 48  |
| - | -   | 1   | -   | 1   | 2119653-1   | FEED CAM, POST FEED                 | 47  |
| - | 1   | 1   | 1   | 1   | 1803583-9   | APPLICATOR BASIC ASSEMBLY, SF       | 46  |
| - | 1   | 1   | 1   | 1   | 1803515-2   | RAM ASSEMBLY, SF ATLANTIC           | 44  |
| - | 1   | 1   | 1   | 1   | 1803602-2   | SCR, BHSC, RoHS (M8 X 40)           | 41  |
| 7 | -   | 1   | 1   | 1   | 4-1752356-2 | SUPPORT, TERMINAL                   | 36  |
| - | 1   | 1   | 1   | 1   | 1752356-3   | SUPPORT, TERMINAL                   | 34  |
| - | 2   | 2   | 2   | 2   | 2079383-5   | SCR, BHSC, RoHS (M4 X 20)           | 33  |
| - | 2   | 2   | 2   | 2   | 3-2844962-0 | SPACER, CYLINDRICAL, STRIP GUIDE    | 30  |
| - | 1   | 1   | 1   | 1   | 2844992-1   | ASSEMBLY, STRIP GUIDE               | 29  |
| - | 1   | 1   | 1   | 1   | 1-455888-0  | SPACER, CRIMPER                     | 28  |
| - | 1   | 1   | 1   | 1   | 1320928-2   | STRIP GUIDE                         | 24  |
| - | 1   | 1   | 1   | 1   | 2168083-2   | SCR, SKT HD CAP, RoHS, M4 X 8.0     | 21  |
| - | 1   | 1   | 1   | 1   | 1-18028-2   | WASHER, FLAT, REG M4                | 20  |
| - | 1   | 1   | 1   | 1   | 2119533-1   | STRIPPER, SIDE FEED                 | 19  |
| 1 | -   | 1   | 1   | 1   | 2119806-1   | INSERT, SHEAR                       | 13  |
| - | 1   | 1   | 1   | 1   | 3-22280-3   | SPRING, COMPRESSION                 | 12  |
| - | 1   | 1   | 1   | 1   | 1-356885-4  | STOP, SHEAR                         | 11  |
| 1 | -   | 1   | 1   | 1   | 2119805-1   | SHEAR HOLDER, FRONT                 | 10  |
| 1 | -   | 1   | 1   | 1   | 1803095-1   | FLOATING SHEAR, FRONT               | 9   |
| 1 | 1   | 2   | 2   | 1   | 1-1633131-1 | ANVIL, COMBINATION .080             | 8   |
| - | 1   | 1   | 1   | 1   | 2119757-5   | DEPRESSOR, SHEAR                    | 5   |
| - | 1   | 1   | 1   | 1   | 2-238011-1  | BLOCK, CRIMPER SPACER               | 4   |
| 1 | 1   | 2   | 2   | 1   | 2119582-1   | CRIMPER, INSULATION F PREMIUM       | 3   |
| - | 1   | 1   | 1   | 1   | 455888-1    | SPACER, CRIMPER                     | 2   |
| 1 | 1   | 2   | 2   | 1   | 6-456405-6  | CRIMPER, WIRE PREMIUM               | 1   |

| DIMENSIONS: |         | TOLERANCES UNLESS OTHERWISE SPECIFIED: |         | DRAWING NO |         | SCALE                                  |        |
|-------------|---------|--|---------|------------|---------|--|--------|
| mm          | 0 PLC ± | 1 PLC ±                                | 2 PLC ± | 3 PLC ±    | 4 PLC ± | ANGLES                                 | FINISH |
|             |         |  |         |            |         |  |        |
| MATERIAL    |         |  |         | WEIGHT     |         | Customer Accessible Production Drawing |        |
|             |         |  |         |            |         | SCALE 1:2 SHEET 1 OF 4 REV M           |        |



| PART NUMBER | REVISION | DESCRIPTION              | FEED TYPE  |
|-------------|----------|--------------------------|------------|
| 2-2151074-1 | M        | FINE CRIMP HEIGHT ADJUST | MECHANICAL |
| 2-2151074-2 | M        | FINE CRIMP HEIGHT ADJUST | PNEUMATIC  |
| 7-2151074-7 | L        | CRIMP TOOLING KIT        | -          |

PACIFIC VERSION TERMINATOR  
INTERFACE ADAPTER



| APPLICATOR DATA |                |      |
|-----------------|----------------|------|
| CRIMP           | SIZE           | TYPE |
| WIRE            | 2.03 mm [.080] | F    |
| INSUL           | 3.30 mm [.130] | F    |

APPLICATOR INSTRUCTIONS  
408-35042

| TERMINAL DATA: TE TERMINAL                     |                               | TE CRIMP SPECIFICATION |                |
|--|-------------------------------|------------------------|----------------|
| TERMINAL NAME: AMP POWER DOUBLE LOCK CONTACT   |                               |                        |                |
| WIRE STRIP LENGTH                              | INSULATION DIAMETER RANGE     |                        |                |
| 3.00-4.00 mm [1.18-.157 IN]                    | Ø1.80-3.10 mm [0.071-.122 IN] |                        |                |
| TERMINAL APPLICATION SPECIFICATION (A)114-5175 | -                             |                        |                |
| (B)114-61016                                   | -                             |                        |                |
| TERMINALS APPLIED                              |                               |                        |                |
| TE TERMINAL                                    | TE TERMINAL                   | TE TERMINAL            | TE TERMINAL    |
| (A) 177915-1                                   | (A) 177915-9                  | (A) 177917-1           | (A) 1-177917-1 |
| (A) 177915-2                                   | (A) 5-177915-1                | (A) 177917-2           | (A) 1-177917-2 |
| (B) 1743729-1                                  |                               |                        |                |

| WIRE SIZE         | CRIMP HEIGHT mm [INCH]      | CRIMP HEIGHT REFERENCE SETTING |
|-------------------|-----------------------------|--------------------------------|
| 16 AWG OR 1.27mm2 | 1.29+/-0.05 [0.051+/-0.002] | 5.3                            |
| 18 AWG OR 0.89mm2 | 1.15+/-0.05 [0.045+/-0.002] | 6.5                            |
| 20 AWG OR 0.51mm2 | 1.05+/-0.05 [0.041+/-0.002] | 7.6                            |

- 1 RECOMMENDED SPARE PARTS
- 2 REFER TO SUPPLIED INSTRUCTION SHEET FOR CLEANING, LUBRICATION AND STORAGE OF APPLICATOR.
- 3 APPLY PART NUMBER 1-23419-5 LOCTITE TO THREADS OF ITEM 180. APPLY PART NUMBER 2-23419-6 LOCTITE TO THREADS OF ITEM 242.
- 4 CRIMP HEIGHT REFERENCE SETTING WAS THE SETTING USED WHEN THE APPLICATOR WAS QUALIFIED AT THE FACTORY. ADJUSTMENT MAY BE NECESSARY WHEN RUNNING APPLICATOR IN THE FIELD.
- 5 TERMINAL LUBRICANT IS RECOMMENDED.
- 6. UNLESS SPECIFIED OTHERWISE TORQUE VALUES SHALL BE USED PER DOCUMENT, 101-35000.
- 7 ITEM 34 IS APPLY FOR FEMALE TERMINAL 177915 & 1743729; ITEM 36 IS APPLY FOR MALE TERMINAL 177917.

**\*WARNING**  
ON INSTALLATION, SET WIRE DISC TO CRIMP HEIGHT REFERENCE SETTING FOR LARGEST WIRE SIZE. CRIMP HEIGHT REFERENCE SETTINGS GREATER THAN THE VALUE SHOWN MAY CAUSE DAMAGE TO THE CRIMP TOOLING, REFER TO THE INSTRUCTION SHEET FOR PROPER SETUP AND ADJUSTMENTS.

PACIFIC VERSION  
Shown on sheets 3 of 4 & 4 of 4  
(Atlantic version shown on sheets 1 of 4 & 2 of 4)

| LOC | DIST | REVISIONS |     |             |      |     |      |
|-----|------|-----------|-----|-------------|------|-----|------|
| A   | 66   | P         | LTN | DESCRIPTION | DATE | OWN | APVD |
| -   | -    | -         | -   | SEE SHEET 1 | -    | -   | -    |

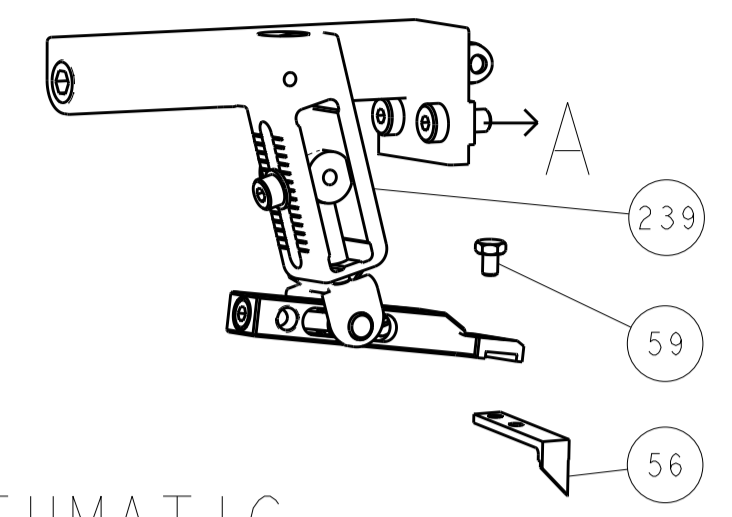
|   |     |     |             |                                     |     |
|---|-----|-----|-------------|-------------------------------------|-----|
| - | 1   | 1   | 1803078-4   | SPACER, PRECISION                   | 261 |
| - | 1   | 1   | 2119082-7   | CAM, SNAIL, INSULATION ADJUSTMENT   | 244 |
| - | 1   | 1   | 2079764-1   | WASHER, WAVE SPRING, CREST-TO-CREST | 243 |
| - | 1   | 1   | 2119083-1   | RETAINER, INSULATION DIAL           | 242 |
| - | 1   | 1   | 7-18023-7   | SCR, SKT HD CAP M3 X 4.0            | 241 |
| - | -   | 1   | 2119580-1   | MECHANICAL FEED ASSEMBLY            | 239 |
| - | 1   | -   | 2844940-1   | AIR FEED MODULE                     | 238 |
| - | 1   | 1   | 1-1752354-3 | STANDOFF, HOLD-DOWN                 | 180 |
| - | 1   | 1   | 1803043-9   | CRIMPER, SPECIAL PREMIUM            | 178 |
| - | 1   | 1   | 6-993111-6  | PIN, SLOTTED SPRING 3.0 X 14.0      | 177 |
| - | 1   | 1   | 8-22280-7   | SPRING, COMPRESSION                 | 176 |
| - | 1   | 1   | 1752353-2   | GUIDE PIN, HOLDDOWN                 | 175 |
| - | 1   | 1   | 1901680-2   | GUIDE PIN, HOLDDOWN                 | 174 |
| - | REF | REF | 994970-2    | COUNTER, MAGNETIC                   | 164 |
| - | 1   | -   | 2119641-2   | FEED CAM, AIR FEED                  | 151 |
| - | 1   | 1   | 2168083-8   | SCR, SKT HD CAP, RoHS, M4 X 16      | 144 |
| - | 4   | 4   | 2168083-9   | SCR, SKT HD CAP, RoHS, M4 X 20      | 143 |
| - | -   | 1   | 2119653-2   | FEED CAM, POST FEED                 | 142 |
| - | 1   | 1   | 1-1803583-0 | APPLICATOR BASIC ASSEMBLY, SF       | 141 |
| - | 1   | 1   | 1803516-2   | RAM ASSEMBLY, SF PACIFIC            | 140 |
| - | 1   | 1   | 1-18028-2   | WASHER, FLAT, REG M4                | 119 |
| - | 1   | 1   | 2119955-1   | ASSY, LUBRICATOR, SIDE FEED         | 113 |
| - | 1   | 1   | 2844908-1   | SCREW, LOCKING                      | 99  |
| - | 1   | 1   | 2844907-1   | POST, LOCKING                       | 98  |
| - | 1   | 1   | 1-455888-6  | SPACER, CRIMPER                     | 82  |
| - | 1   | 1   | 1803607-3   | DOCUMENTATION PACKAGE               | 71  |
| - | 1   | 1   | 2119740-1   | TAG, IDENTIFICATION                 | 67  |
| - | 2   | 2   | 2168078-1   | SCREW, DRIVE, RH, RoHS, 2 x .188    | 66  |
| - | 1   | 1   | 5-18022-5   | SCR, HEX HD CAP, M4 X 6.0           | 59  |
| - | 1   | 1   | 1338685-1   | PAWL, FEED                          | 56  |
| - | 1   | 1   | 1-5018030-0 | NUT, HEX, REG, RoHS, M3.5           | 52  |
| - | 1   | 1   | 1-1901681-9 | HOLDDOWN, TERMINAL                  | 51  |
| - | 1   | 2   | 18023-9     | SCR, SKT HD CAP M4 X 6.0            | 49  |
| - | -   | 1   | 2119652-1   | FEED CAM, PRE FEED                  | 48  |
| - | 1   | 1   | 1803602-2   | SCR, BHSC, RoHS (M8 X 40)           | 41  |
| - | 1   | 1   | 4-1752356-2 | SUPPORT, TERMINAL                   | 36  |
| - | 1   | 1   | 1752356-3   | SUPPORT, TERMINAL                   | 34  |
| - | 2   | 2   | 2079383-5   | SCR, BHSC, RoHS (M4 X 20)           | 33  |
| - | 2   | 2   | 3-2844962-0 | SPACER, CYLINDRICAL, STRIP GUIDE    | 30  |
| - | 1   | 1   | 2844992-1   | ASSEMBLY, STRIP GUIDE               | 29  |
| - | 1   | 1   | 1-455888-0  | SPACER, CRIMPER                     | 28  |
| - | 1   | 1   | 1320928-2   | STRIP GUIDE                         | 24  |
| - | 1   | 1   | 2168083-2   | SCR, SKT HD CAP, RoHS, M4 X 8.0     | 21  |
| - | 1   | 1   | 1-18028-2   | WASHER, FLAT, REG M4                | 20  |
| - | 1   | 1   | 2119533-1   | STRIPPER, SIDE FEED                 | 19  |
| - | 1   | 1   | 2119806-1   | INSERT, SHEAR                       | 13  |
| - | 1   | 1   | 3-22280-3   | SPRING, COMPRESSION                 | 12  |
| - | 1   | 1   | 1-356885-4  | STOP, SHEAR                         | 11  |
| - | 1   | 1   | 2119805-1   | SHEAR HOLDER, FRONT                 | 10  |
| - | 1   | 1   | 1803095-1   | FLOATING SHEAR, FRONT               | 9   |
| - | 1   | 1   | 7-1633131-1 | ANVIL, COMBINATION .080             | 8   |
| - | 1   | 1   | 2119757-5   | DEPRESSOR, SHEAR                    | 5   |
| - | 1   | 1   | 2-238011-1  | BLOCK, CRIMPER SPACER               | 4   |
| - | 1   | 1   | 2119582-1   | CRIMPER, INSULATION F PREMIUM       | 3   |
| - | 1   | 1   | 455888-1    | SPACER, CRIMPER                     | 2   |
| - | 1   | 1   | 6-456405-6  | CRIMPER, WIRE PREMIUM               | 1   |

| DIMENSIONS: |         | TOLERANCES UNLESS OTHERWISE SPECIFIED: |         | MATERIAL: |         | FINISH: |  |
|-------------|---------|--|---------|-----------|---------|---------|--|
| mm          | 0 PLC ± | 1 PLC ±                                | 2 PLC ± | 3 PLC ±   | 4 PLC ± | ANGLES  |  |
|             |         |  |         |           |         |         |  |

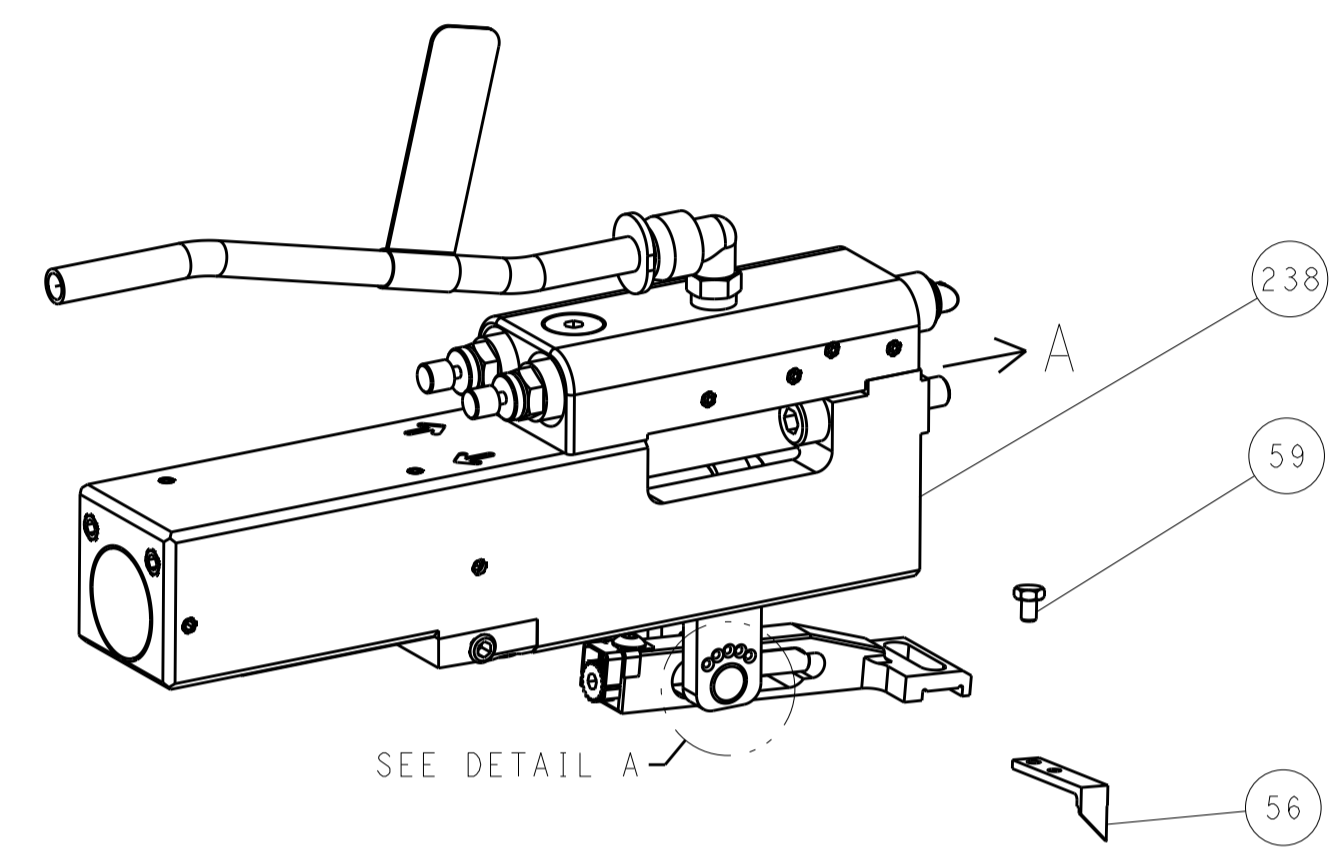
|  |                            |                              |
|--|----------------------------|------------------------------|
| OWN                                    | G. HOFFNER                 | 15DEC2010                    |
| CHK                                    | G. BAILEY                  | 16DEC2010                    |
| APVD                                   | J. CRUZ                    | 16DEC2010                    |
| NAME                                   | Ocean Side Feed Applicator |                              |
| SIZE                                   | CAGE CODE                  | DRAWING NO                   |
| A1                                     | 00779                      | 2151074                      |
| Customer Accessible Production Drawing |                            | SCALE 1:2 SHEET 3 OF 4 REV M |

| LOC |    | DIST |     | REVISIONS   |      |     |      |
|-----|----|------|-----|-------------|------|-----|------|
| A   | 66 | P    | LTM | DESCRIPTION | DATE | OWN | APVD |
|     |    | -    |     | SEE SHEET 1 |      |     |      |

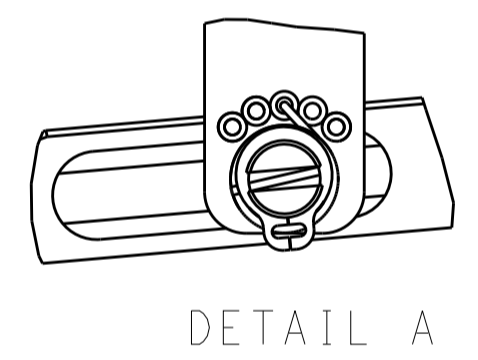
# FEED TYPE MECHANICAL



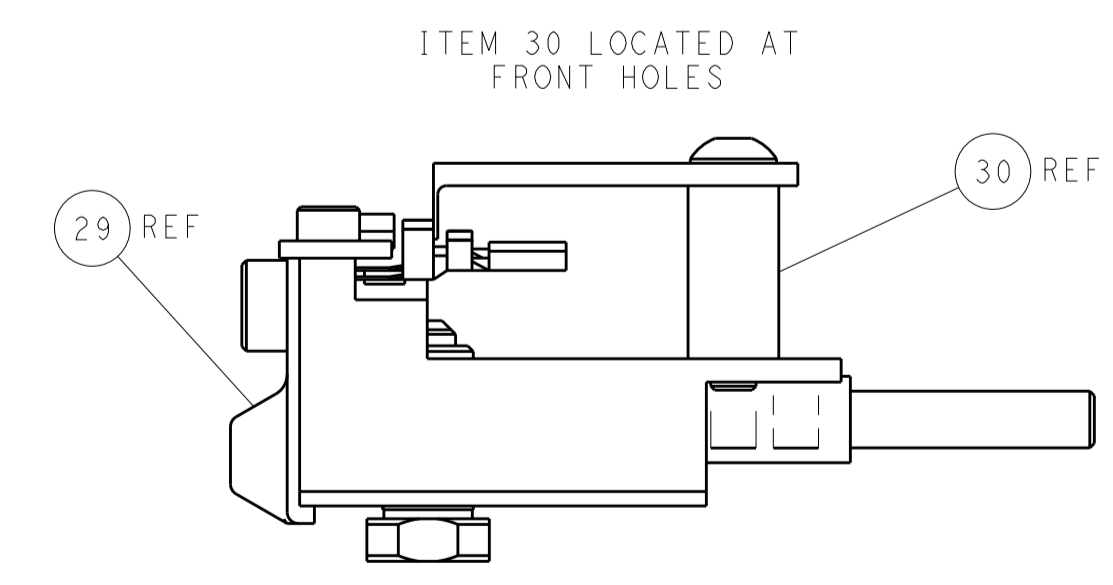
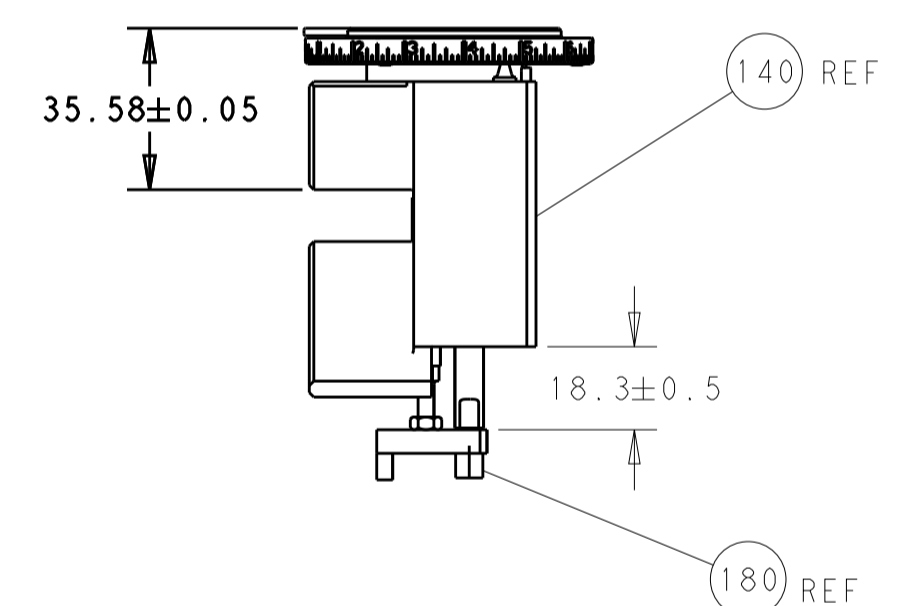
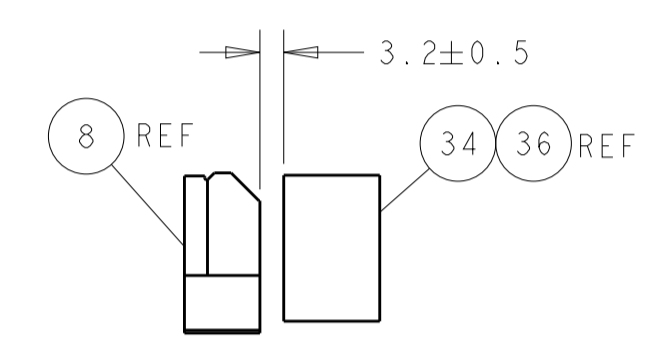
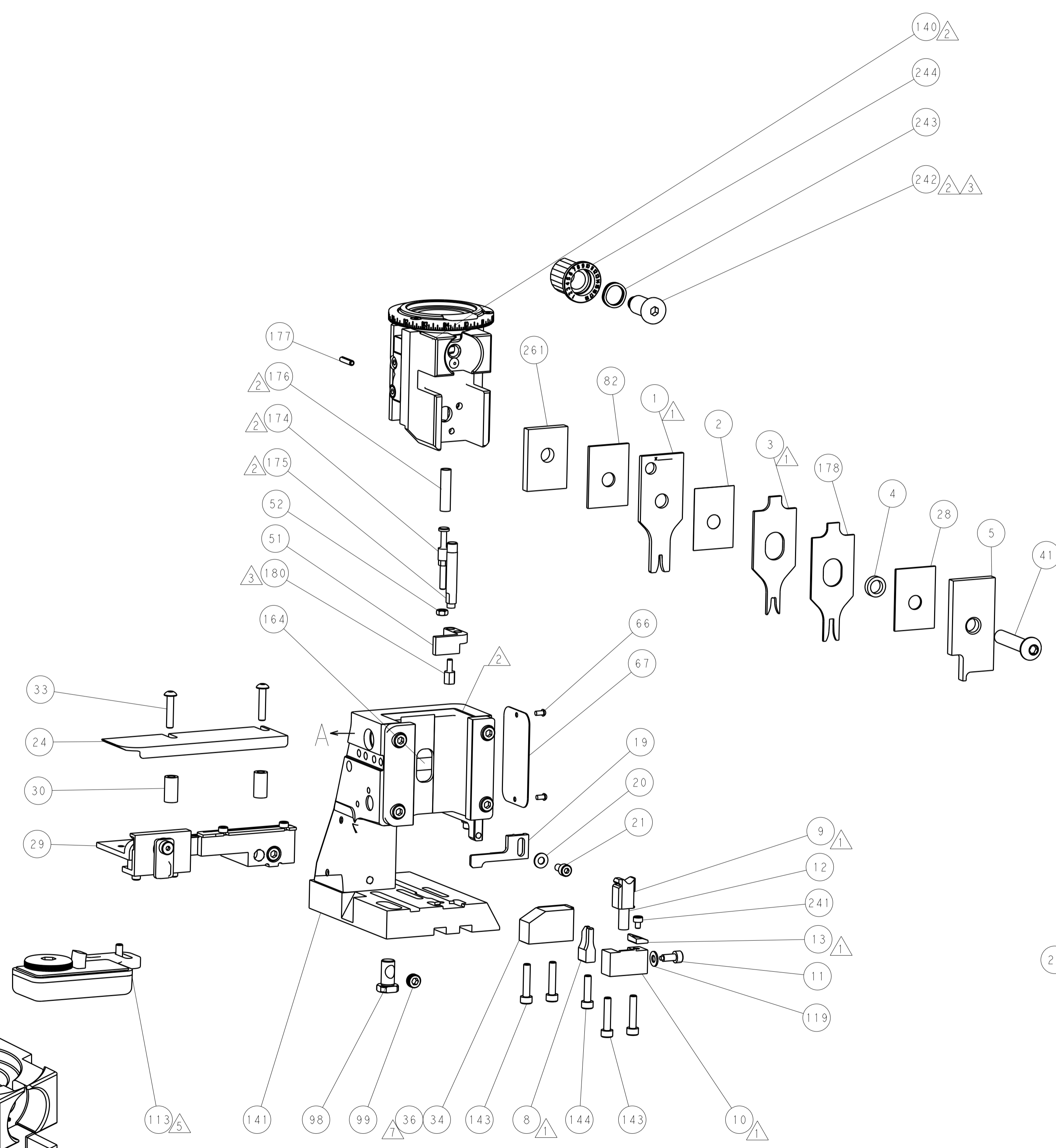
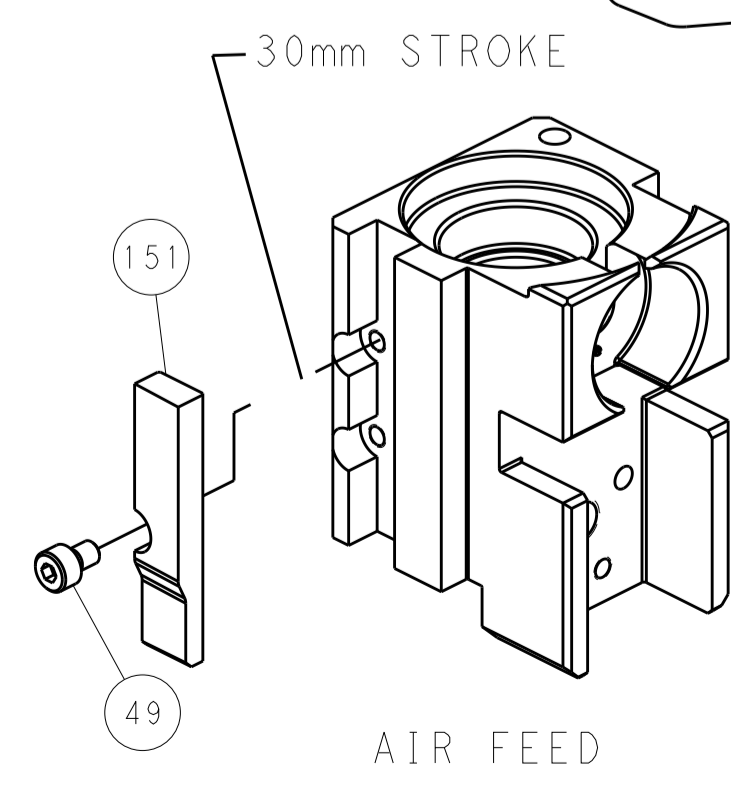
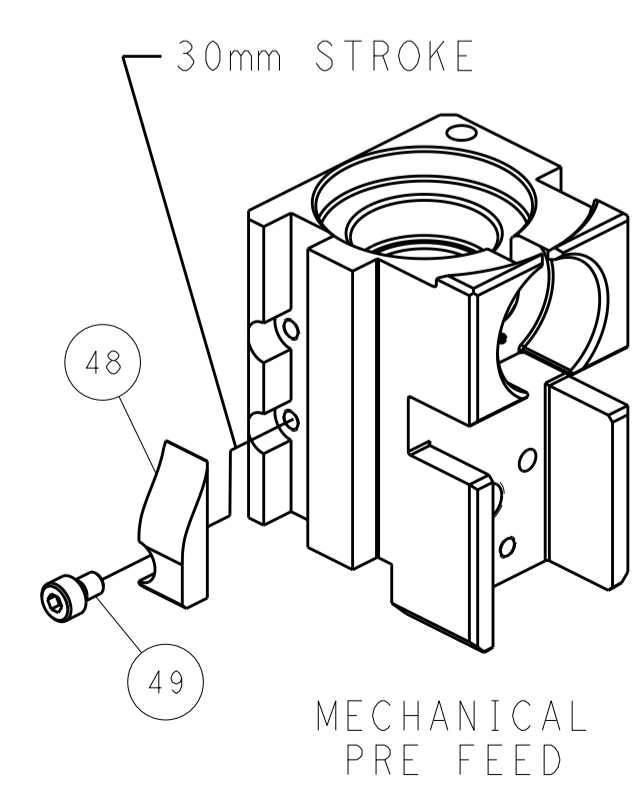
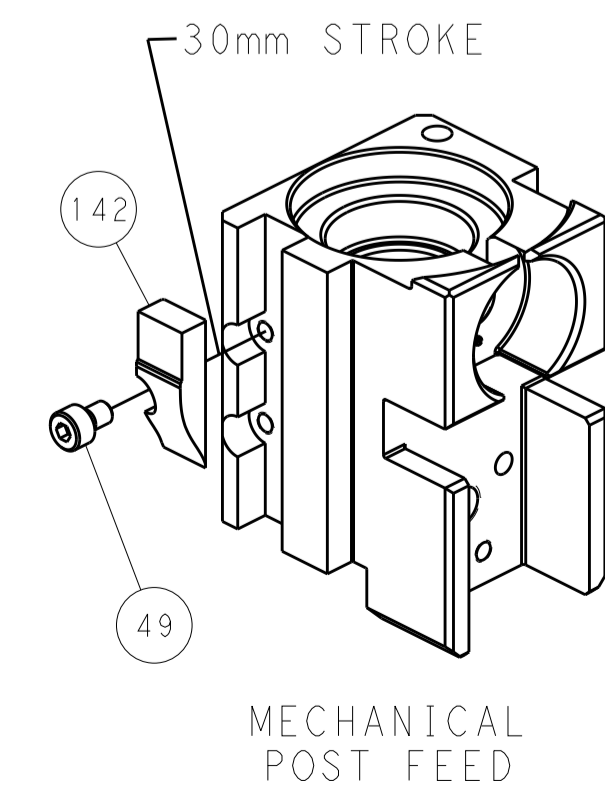
## PNEUMATIC



## FEED SPRING SETTING POSITION (SHOWN FROM REAR SIDE)



# CAM POSITIONS



**PACIFIC VERSION**  
 Shown on sheets 3 of 4 & 4 of 4  
 (Atlantic version shown on sheets 1 of 4 & 2 of 4)

|  |        |  |  |                          |                  |                 |                           |
|--|--------|--|--|--------------------------|------------------|-----------------|---------------------------|
| DIMENSIONS:                            |        | TOLERANCES UNLESS OTHERWISE SPECIFIED: |  | DWN G. HOFFNER 15DEC2010 |                  | TE Connectivity |                           |
| mm                                     | 0 PLC  | ±                                      |  | CHK G. BAILEY 16DEC2010  | NAME             |                 | Harrisburg, PA 17105-3608 |
|  | 1 PLC  | ±                                      |  | APVD J. CRUZ 16DEC2010   | PRODUCT SPEC     |                 |                           |
|  | 2 PLC  | ±                                      |  |                          | APPLICATION SPEC |                 |                           |
|  | 3 PLC  | ±                                      |  |                          | SIZE             |                 | CAGE CODE DRAWING NO      |
|  | 4 PLC  | ±                                      |  |                          | WEIGHT           |                 | RESTRICTED TO             |
|  | ANGLES | ±                                      |  |                          | MATERIAL         |                 |                           |
|  |        |  |  |                          | FINISH           |                 |                           |
| Customer Accessible Production Drawing |        |  |  | SCALE 1:2                | SHEET 4          | OF 4            | REV M                     |