

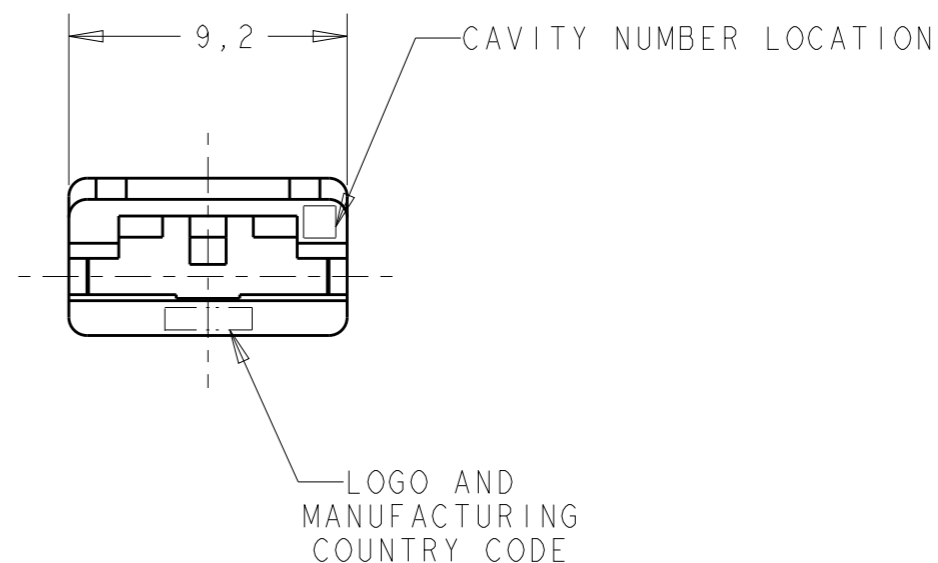
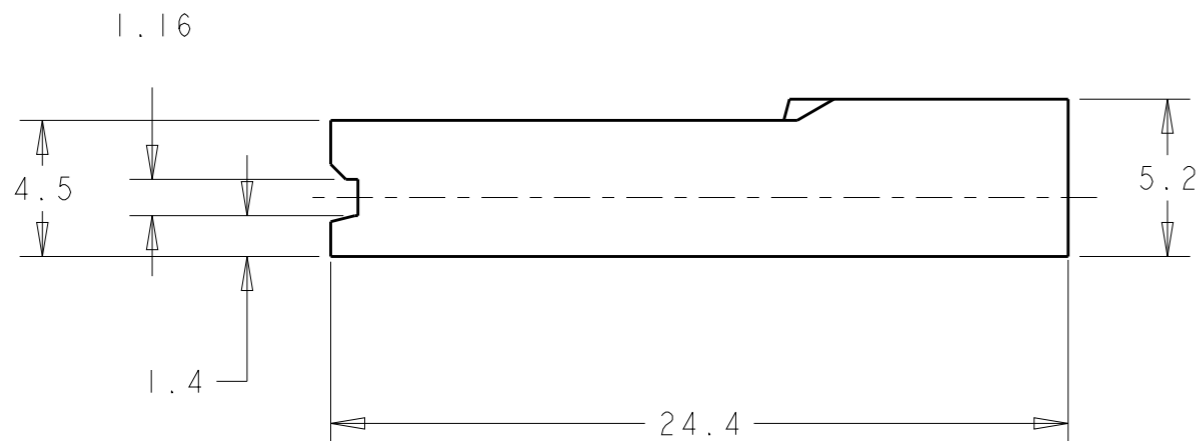
THIS DRAWING IS UNPUBLISHED.

RELEASED FOR PUBLICATION

© COPYRIGHT -

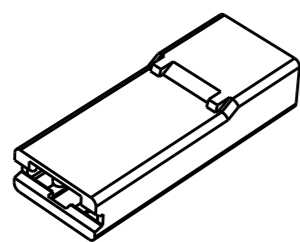
ALL RIGHTS RESERVED.


LOC	DIST	REVISIONS					
AP	-	P	LTR	DESCRIPTION	DATE	DWN	APVD
			A4	REV. BY ECO 17-010547	18JUL2017	HC	WLS
			A5	REV. BY ECO 18-014120	26SEP2018	HC	WLS
			B	REVISED PER ECO-19-015154	08OCT2019	WLS	WLS



BLACK	PBT - HB - TEMPERATURE RESISTANT	2-2133346-0
GREEN	PA 6.6 94 - V-2	1-2133346-5
BLACK		1-2133346-4
YELLOW		1-2133346-3
BLUE		1-2133346-2
RED		1-2133346-1
NATURAL		1-2133346-0
BLACK		POLIPROPYLENE
NATURAL	POLIPROPYLENE	2133346-1
COLOR	MATERIAL	PART NUMBER

OBSOLETE



THIS DRAWING IS A CONTROLLED DOCUMENT.		DWN H.C. CANTER 23MAI2011	 TE Connectivity	
DIMENSIONS: mm		CHK W.L. STEFANI 25MAI2011		
TOLERANCES UNLESS OTHERWISE SPECIFIED:		APVD -	NAME POST INSULATION FASTON 6.35 MM HSG POST INSULATION FASTON 6.35 MM HSG	
0 PLC ± 1 PLC ±0,3 2 PLC ±0,3 3 PLC ± 4 PLC ± ANGLES ±°		PRODUCT SPEC 108-22033	SIZE A3	
MATERIAL SEE TABLE		APPLICATION SPEC -	CAGE CODE -	DRAWING NO C-2133346
FINISH SEE TABLE		WEIGHT -	RESTRICTED TO -	
		Customer Drawing	SCALE 4:1	SHEET 1 OF 1 REV B