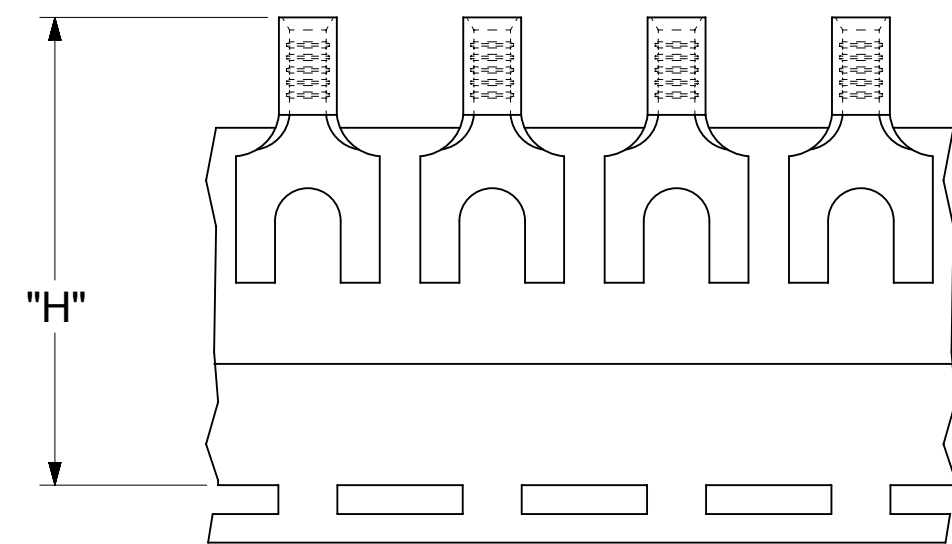
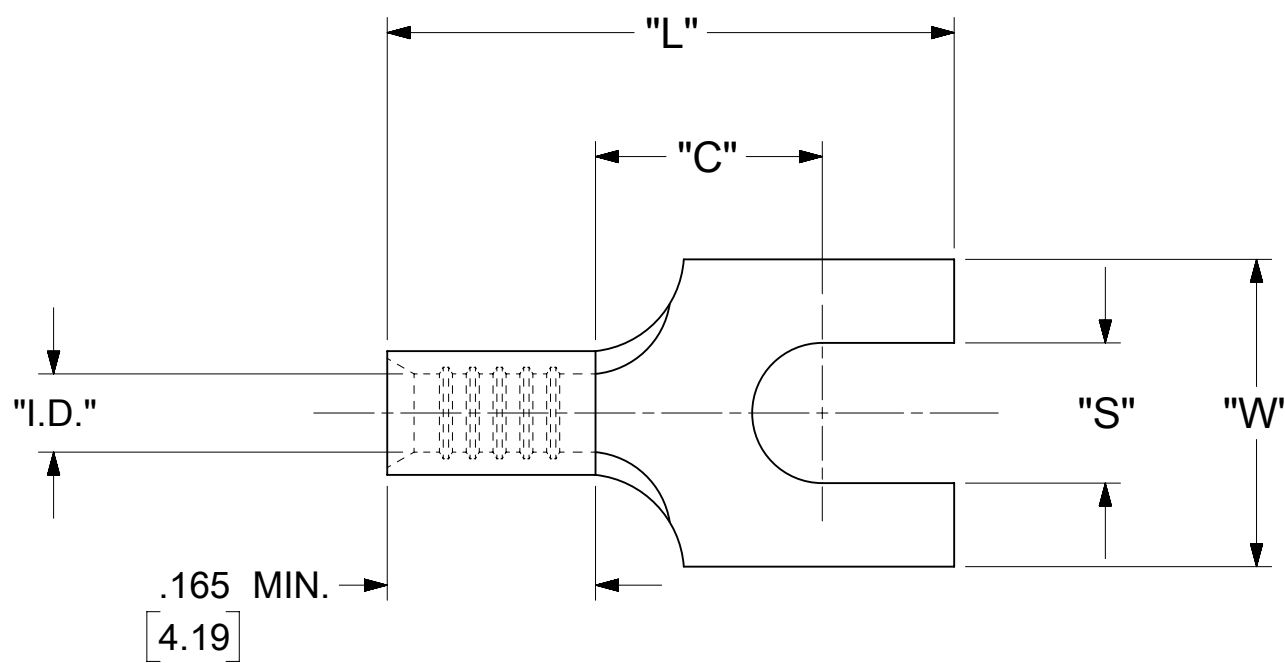


LOOSE PIECE		TAPE MOUNTED		SPECIFICATIONS									
MATERIAL NUMBER	ENGINEERING NUMBER	MATERIAL NUMBER	ENGINEERING NUMBER	STUD SIZE	"S" ±.005 [0.13]	"W" ±.010 [0.25]	"C" MIN.	"L" MAX.	"I.D." MIN.	"H"	STOCK THICKNESS		
191290048	AA-134-04	---	---	4	.119 [3.02]	.291 [7.39]	.207 [5.26]	.560 [14.22]	.062 [1.57]	---	.028 ^{+0.01} / _{-.000} [0.71]		
191290047	AA-134-06	---	---	6	.146 [3.71]								
191290045	AA-134-08	---	---	8	.173 [4.39]								
191290043	AA-134-10	---	---	10	.198 [5.03]								
191290041	AA-138-04	191290040	AA-138-04T	4	.119 [3.02]	.245 [6.23]	.207 [5.26]	.560 [14.22]	.062 [1.57]	1.155 [29.34]	.028 ^{+0.01} / _{-.000} [0.71]		
191290039	AA-138-06	191290038	AA-138-06T	6	.146 [3.71]								



PARTS ON TAPE

NOTES:

- MATERIAL: COPPER
PLATING: ELECTRO-TIN (.0003 MIN).
- WIRE SIZE: 22 - 18 AWG
.25 - 1.5 MM²
- "UL" LISTING #E32244
"CSA" LISTING #18689
- ALL DIMENSIONS IN INCHES/[MM].
- PARTS ARE ROHS COMPLIANT.
- DIMS. SHOWN ARE FOR REFERENCE ONLY.

SYMBOLS □ = 0 ▽ = 0 ▽ = 0 ▽ = 0 ▽ = 0 ▽ = 0 ▽ = 0 ▽ = 0 ▽ = 0	THIS DRAWING CONTAINS INFORMATION THAT IS PROPRIETARY TO MOLEX ELECTRONIC TECHNOLOGIES, LLC AND SHOULD NOT BE USED WITHOUT WRITTEN PERMISSION		CURRENT REV DESC:		 SPADE TONGUE TERMINAL KRIMP TITE 100-SERIES PRODUCT CUSTOMER DRAWING	
	DIMENSION UNITS	SCALE	EC NO: 625846			DOCUMENT NUMBER
	INCH/MM	NTS	DRWN: ABENJAMINLW 2019/09/03			AACD10301
	GENERAL TOLERANCES (UNLESS SPECIFIED)		CHK'D: GROJAS01 2019/10/17			DOC TYPE DOC PART REVISION PSD 001 A
	MM	INCH	APPR: JMACNEIL 2019/10/18		MATERIAL NUMBER	
	4 PLACES ± --- ± ---	INITIAL REVISION:		SEE TABLE		
	3 PLACES ± --- ± 0.005	DRWN: JJ 1984/10/17		CUSTOMER		
	2 PLACES ± 0.13 ± 0.01	APPR: JMACNEIL 2019/10/18		GENERAL MARKET		
	1 PLACE ± 0.25 ± ---	THIRD ANGLE PROJECTION		SHEET NUMBER		
	0 PLACES ± --- ± ---	DRAWING		1 OF 1		
	ANGULAR TOL ± 0.5°	C-SIZE	SERIES			
	DRAFT WHERE APPLICABLE MUST REMAIN WITHIN DIMENSIONS	19129				

DOCUMENT STATUS	P1	RELEASE DATE	2019/10/18 22:51:49
-----------------	----	--------------	---------------------