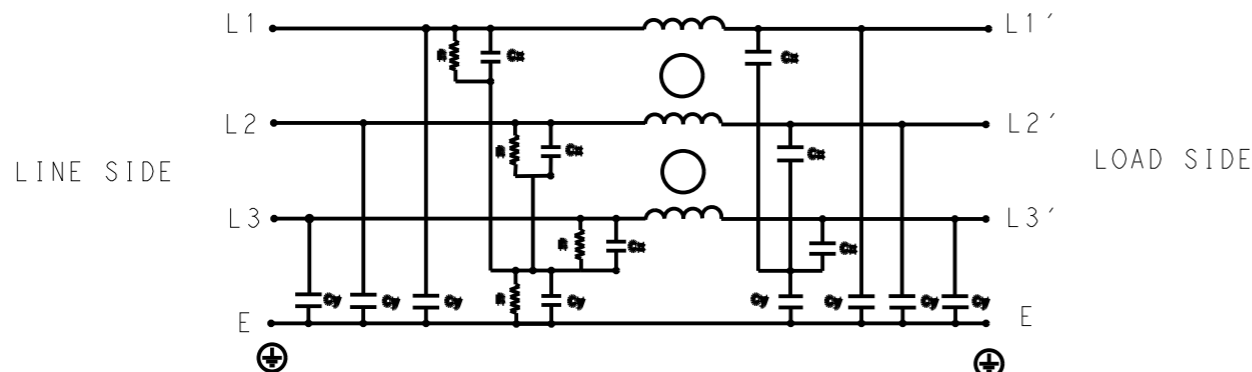


REVISIONS

| P | LTR | DESCRIPTION | DATE | DWN | APVD |
|---|-----|-----------------|-----------|-----|------|
| | A | INITIAL RELEASE | 02APR2021 | BS | CB |
| | | | | | |
| | | | | | |



SCHEMATIC

TYPICAL INSERTION LOSS
COMMON MODE 50/50Ω; DIFFERENTIAL MODE 50/50Ω

| MHz | 0.01 | 0.05 | 0.15 | 0.5 | 1 | 3 | 5 | 10 | 30 |
|-----|------|------|------|-----|----|----|----|----|----|
| CM | 56 | 60 | 62 | 54 | 50 | 42 | 40 | 34 | 32 |
| DM | 20 | 24 | 35 | 60 | 46 | 39 | 36 | 30 | 26 |

SAFETY ORGANIZATIONS

THIS FILTER WILL BE FORMALLY RECOGNIZED, CERTIFIED OR APPROVED BY THE LISTED AGENCY. THEREFORE, ALL TEST/REQUIREMENTS SPECIFIED IN THE LATEST REVISION OF THE FOLLOWING AGENCY STANDARDS WILL BE MET:

UL APPROVED 10A 520V 50Hz/60Hz 40°C
 CSA PENDING 10A 520V 50Hz/60Hz 40°C

OPERATING SPECIFICATION

LINE CURRENT/VOLTAGE: 10A, 520VAC
LINE FREQUENCY: 50/60Hz

MAXIMUM LEAKAGE CURRENT: 18mA @ 230VAC, 50Hz

OPERATING AMBIENT TEMPERATURE RANGE @ RATED CURRENT: -25°C TO +40°C

IN AN AMBIENT, T_a, HIGHER THAN 40°C, THE MAXIMUM OPERATING CURRENT, I_o, IS AS FOLLOWS:

$$I_o = I_r \sqrt{\frac{85 - T_a}{45}}$$

RELIABILITY SPECIFICATIONS

STORAGE TEMPERATURE: -40°C TO +85°C
HUMIDITY: 21 DAYS @ 40°C AND 95% RH

TEST SPECIFICATIONS

INDUCTANCE, NOMINAL: 8mH

CAPACITANCE @ 1kHz

LINE TO GROUND, NOMINAL: 1.1μF
LINE TO LINE, NOMINAL: 1μF

DISCHARGE RESISTOR

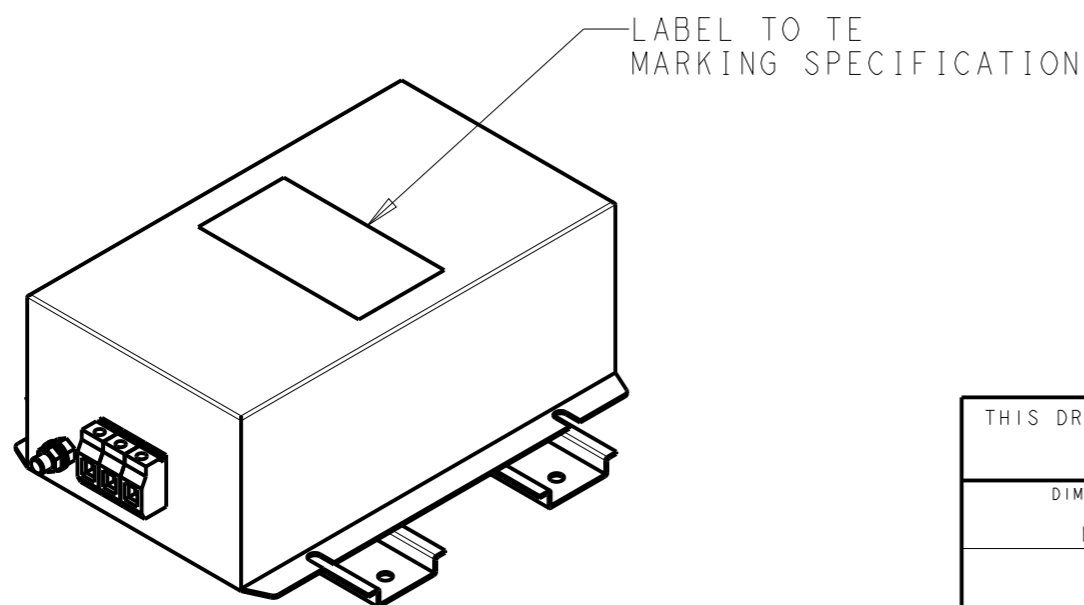
L/G I.R. 1MΩ 1W
 L/L I.R. 2MΩ 1W
 L/N I.R. XXX
 N/G I.R. XXX
 IR (NO DISCHARGE RESISTOR) 20°C, 50% RH AND 100VDC, MIN: 6MΩ

RECOMMENDED RECEIVING INSPECITON HIPOT

LINE TO GROUND FOR 1 MINUTE: 2856VDC
LINE TO LINE FOR 1 MINUTE: 2236VDC

FILTER APPROVAL

THE BEST WAY TO SELECT AND QUALIFY A FILTER IS FOR YOUR ENGINEERING TO TEST THE UNIT IN YOUR EQUIPMENT.



| | | | | |
|--|--------|-------------------------------|---|--|
| THIS DRAWING IS A CONTROLLED DOCUMENT. | | DWN 05APR2021 BAPAT SAHAS | | |
| DIMENSIONS: mm | | CHK 05APR2021 CHRIS BOLLE | | |
| TOLERANCES UNLESS OTHERWISE SPECIFIED: | | APVD 05APR2021 CHRIS BOLLE | NAME POWER LINE FILTER FOR DIN 35 RAIL INSTALLATION 10KEMS10BFPDVM | |
| 0 PLC ±- | | PRODUCT SPEC | SIZE | |
| 1 PLC ±0.5 | | APPLICATION SPEC | CAGE CODE | |
| 2 PLC ±0.40 | | WEIGHT | DRAWING NO | |
| 3 PLC ±0.130 | | CUSTOMER DRAWING | RESTRICTED TO | |
| 4 PLC ±0.0500 | | SCALE 2:5 | SHEET 1 OF 2 | |
| ANGLES ±- | | REV A | | |
| MATERIAL | FINISH | A300779 C-9-1609967-6 | | |

© 2021 TE Connectivity. All Rights Reserved.

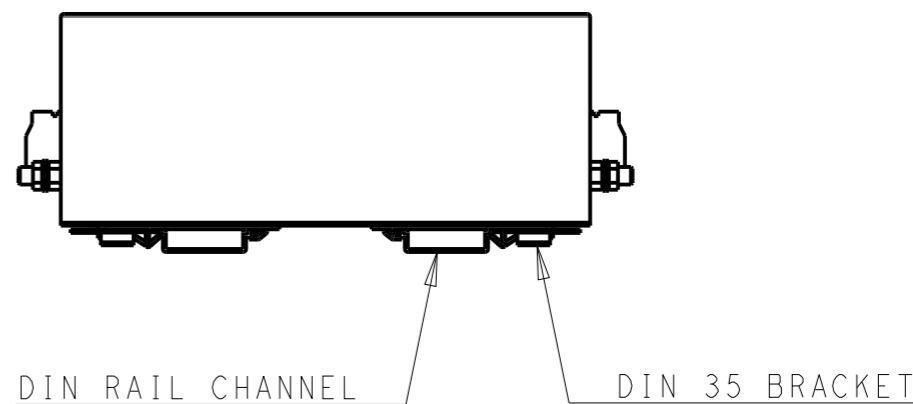
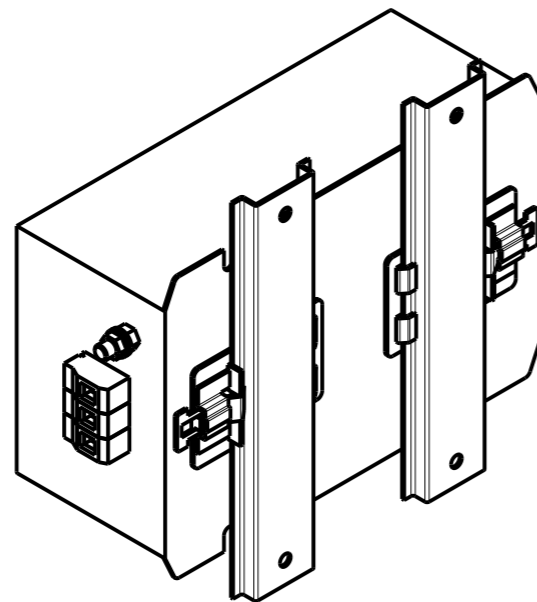
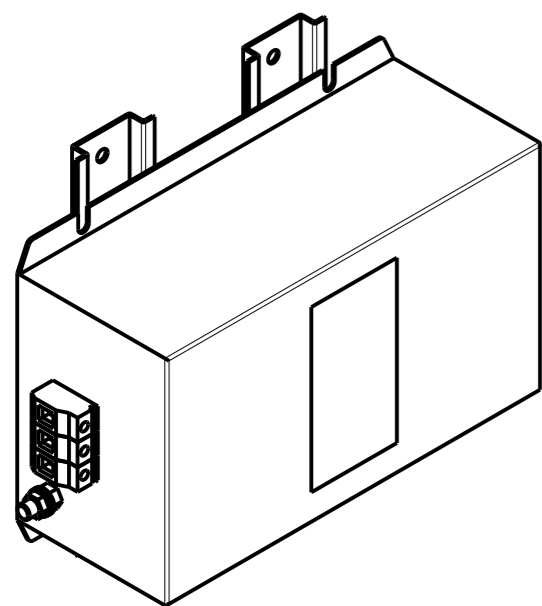
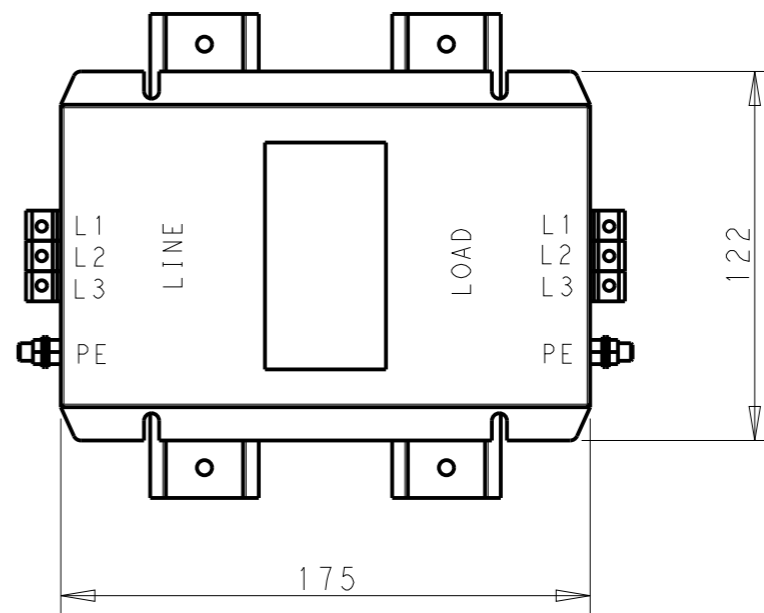
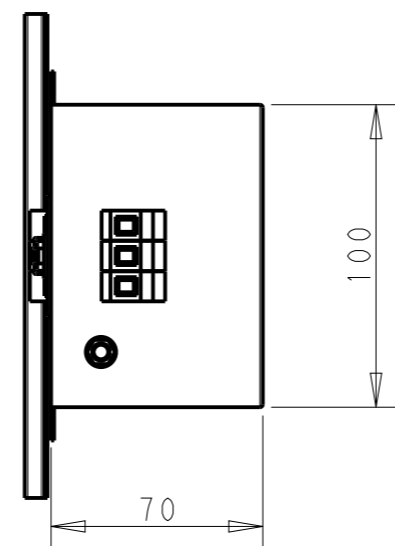
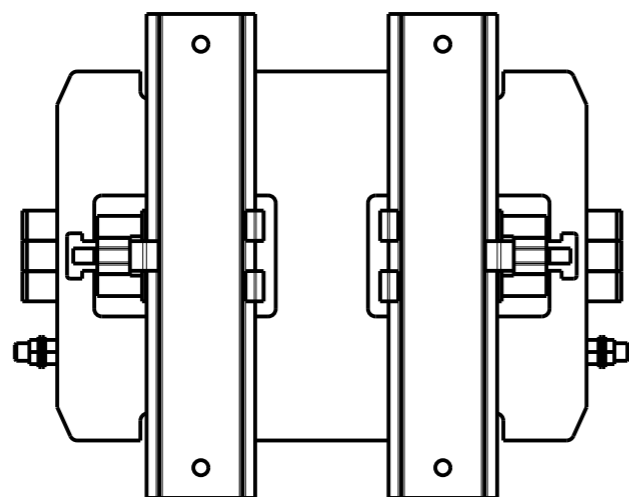
NOTE 1 GROUND CONNECTION:
 FOR ELECTRICAL SAFETY AND FILTER PERFORMANCE
 UNIT MUST HAVE A GOOD GROUND CONNECTION.
 TORQUE OUTER TERMINAL SCREWS: 0.5Nm / 4.5 in.lbs
 TORQUE GROUND NUTS: 2.5-3Nm

NOTE 2 INPUT OUTPUT CONNECTION TERMINAL
 AWG SIZE: 26-12 AWG
 WIRE SECTION: 4 mm²
 THREADED BOLT SIZE FOR GROUND: M6

NOTE 3 SUPPLIED WITH DIN RAIL BRACKET

NOTE 4 DRAWINGS SHOWS DIN RAIL FOR REFERENCE ONLY

| REVISIONS | | | | | |
|-----------|-----|-------------|------|-----|------|
| P | LTR | DESCRIPTION | DATE | DWN | APVD |
| | | SEE SHEET 1 | | | |
| | | | | | |
| | | | | | |



FRONT SIDE

REAR SIDE

THIS DRAWING IS A CONTROLLED DOCUMENT.

| | | | |
|-------------------|--|--|---------|
| DIMENSIONS: mm | | TOLERANCES UNLESS OTHERWISE SPECIFIED: | |
| | | 0 PLC | ±0.5 |
| | | 1 PLC | ±0.40 |
| | | 2 PLC | ±0.130 |
| | | 3 PLC | ±0.0500 |
| | | 4 PLC | ±0.0500 |
| MATERIAL | | FINISH | |
| - | | - | |

| | |
|------------------|-----------|
| DWN | 05APR2021 |
| BAPAT SAHAS | |
| CHK | 05APR2021 |
| CHRIS BOLLE | |
| APVD | 05APR2021 |
| CHRIS BOLLE | |
| PRODUCT SPEC | - |
| APPLICATION SPEC | - |
| WEIGHT | - |
| CUSTOMER DRAWING | |

| | | | | |
|-------|-----------|---|----|---------------|
| | | NAME | | RESTRICTED TO |
| | | POWER LINE FILTER FOR DIN 35 RAIL INSTALLATION 10KEMS10BFPDVM | | |
| SIZE | CAGE CODE | DRAWING NO | | |
| A3 | 00779 | C-9-1609967-6 | | |
| SCALE | | SHEET | OF | REV |
| 2:5 | | 2 | 2 | A |