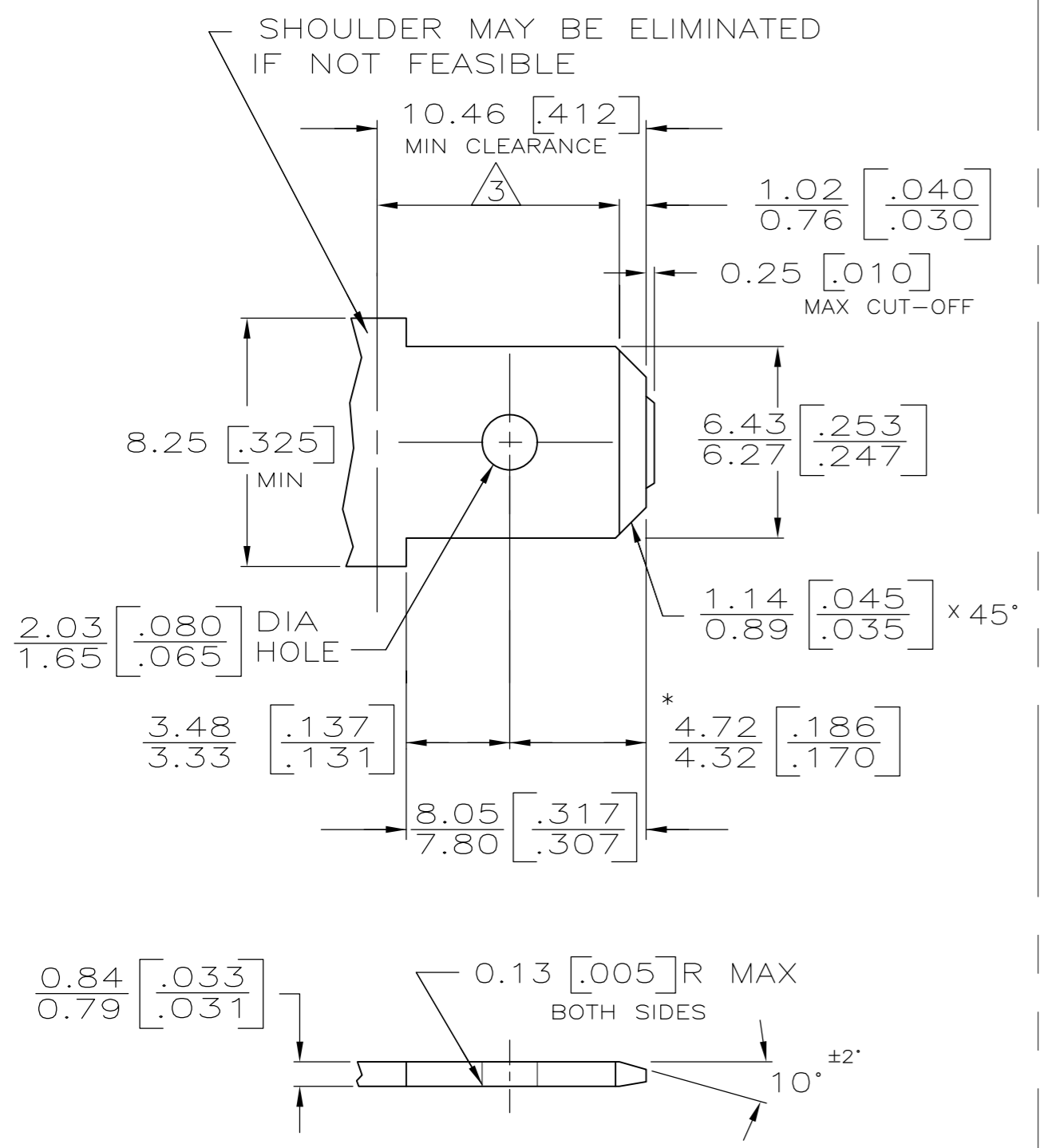


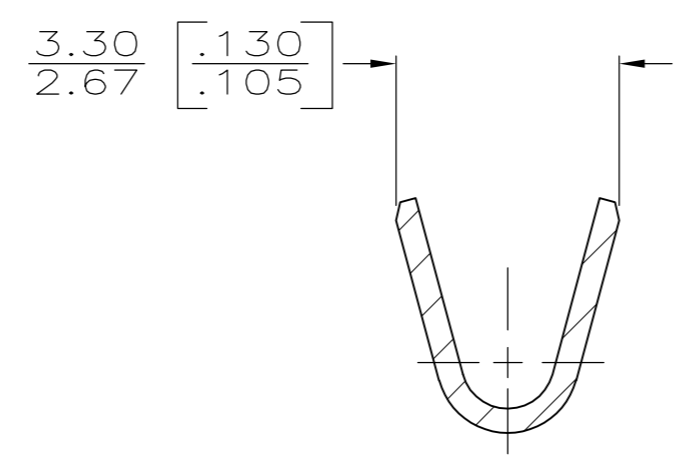
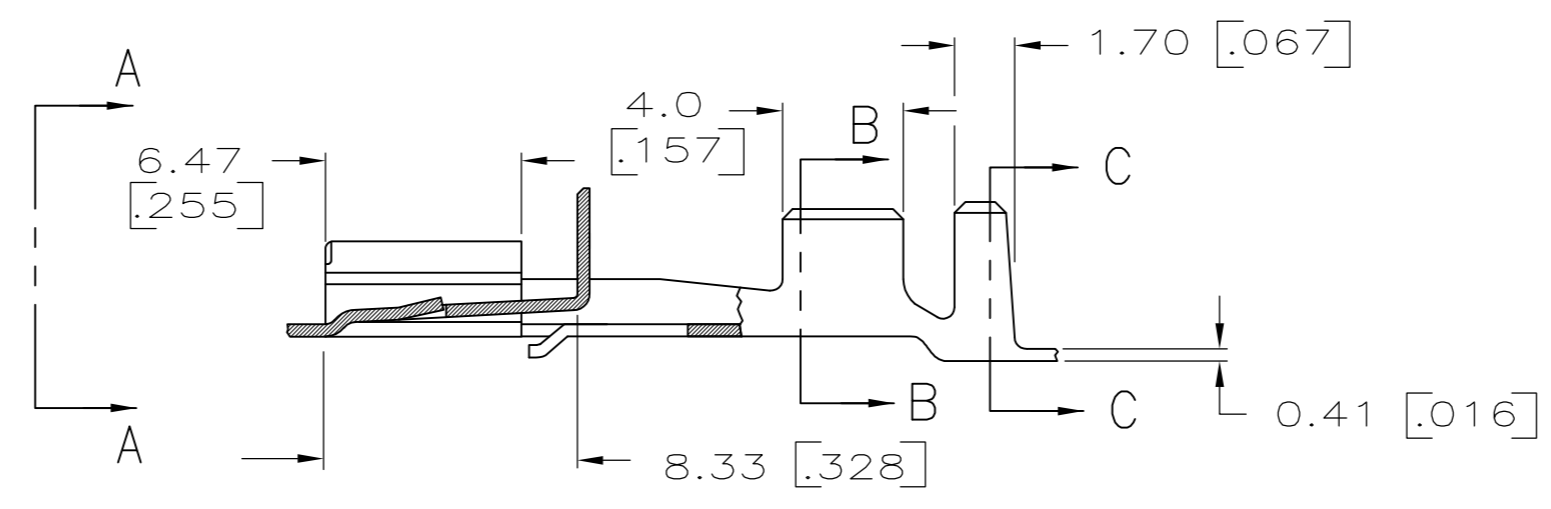
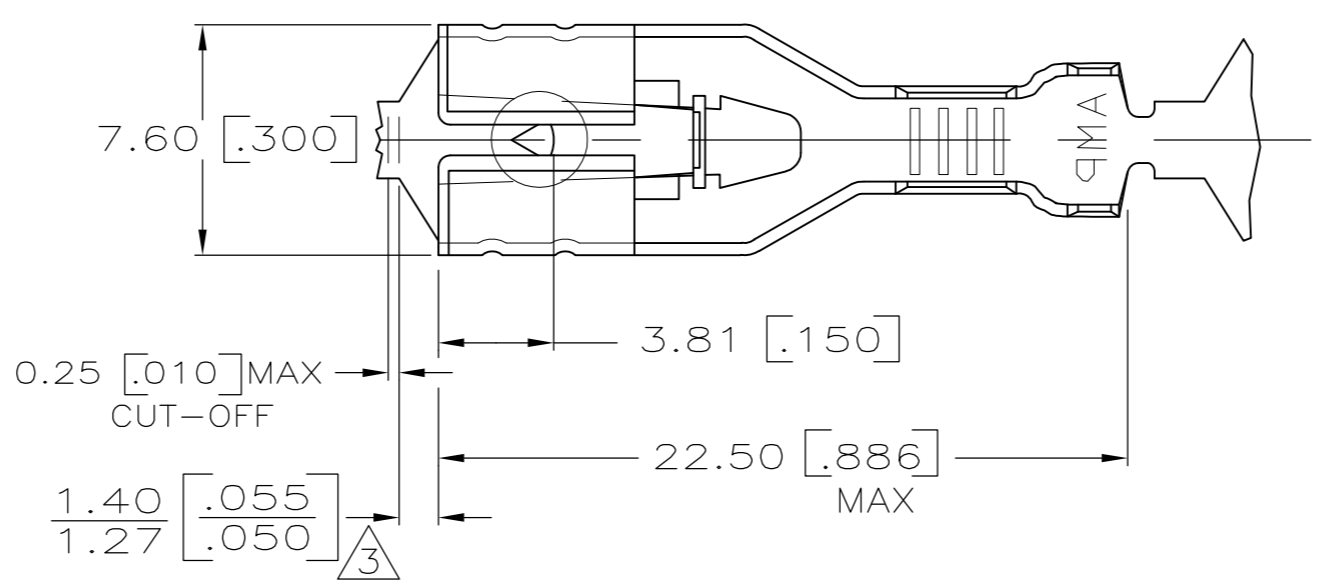
THIS DRAWING IS UNPUBLISHED. RELEASED FOR PUBLICATION  
 © COPYRIGHT - By - ALL RIGHTS RESERVED.

LOC		DIST		REVISIONS			
P	LTR	DESCRIPTION		DATE	DWN	APVD	
AF	50	P4		REVISED PER ECR-12-013486	06JAN13	KH	KR

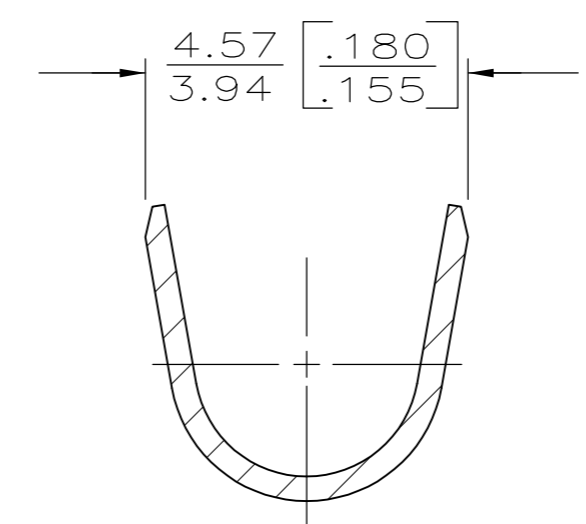
# SUGGESTED MATING TAB



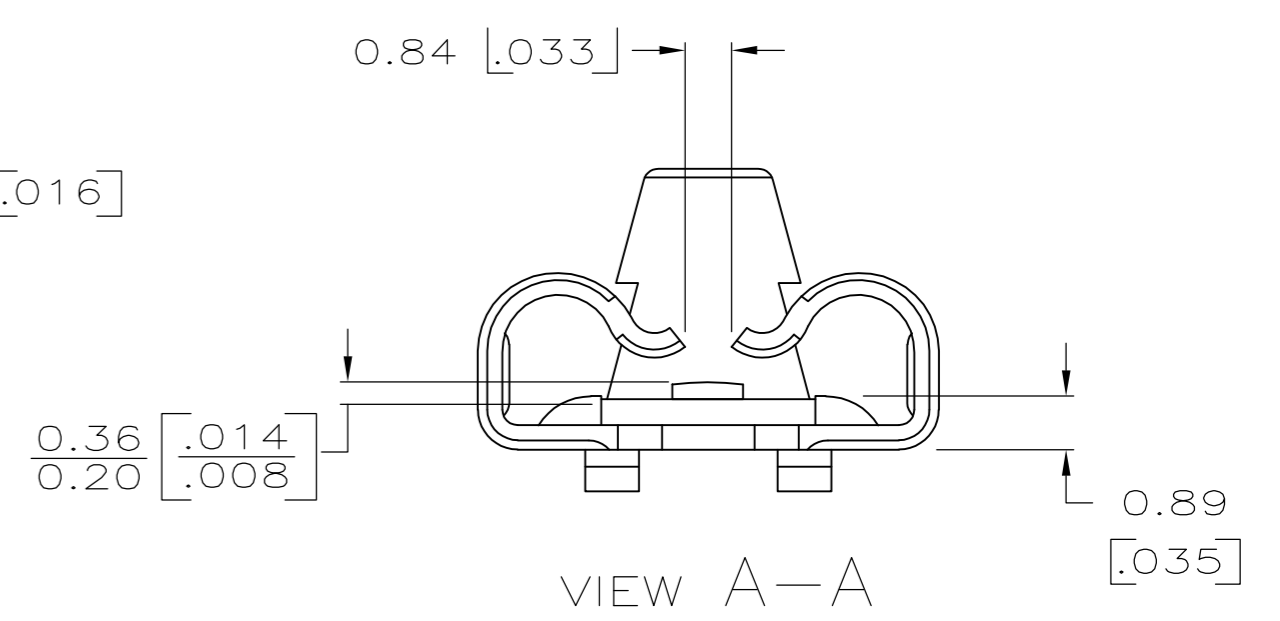
- MATL: 1/2 H BRASS OR NICKEL PL STEEL.
  - NO BURRS PERMISSIBLE AT HOLE.
  - $\triangle 3$  MUST BE FLAT WITHIN 0.076 [0.003] OVER THIS LENGTH.
  - TIN PLATING IS REQUIRED ON BRASS WHEN TERMINAL TEMP. IS OVER 225°F
  - HOLE MUST BE SYMMETRICAL ABOUT TAB  $\phi$  WITHIN 0.076 [0.003]
- \* TO BE USED ONLY WHEN SHOULDER IS ELIMINATED.



SECTION B-B



SECTION C-C



VIEW A-A

- DIMENSIONS IN BRACKETS ARE IN INCHES.
- CONTINUOUS STRIP ON REELS.
- $\triangle 3$  THE 1.40 [0.055] / 1.27 [0.050] DIMENSION MUST BE MAINTAINED BY THE APPLICATOR CUT-OFF TO ENSURE THE PROPER LOCKING FUNCTION OF THE RECEPTACLE.
- WIRE SIZE IS 0.3-0.8mm [22-18] AWG
- INSULATION RANGE IS 1.52-2.54 [0.060-.100] DIA
- $\triangle 6$  GOLD PLATE 0.00127 [0.000050] MIN THK OVER 0.00127 [0.000050] MIN NICKEL PLATE
- $\triangle 7$  PREPRODUCTION - FASR REQ
- $\triangle 8$  OBSOLETE PARTS: OBSOLETE CIS STREAMLINING PER D.RENAUD/D.SINISI

$\triangle 6$	PRE-TIN PLATED	$\triangle 7$ 63119-4
$\triangle 8$ OBSOLETE	UNPLATED	-63119-3
	TIN PLATE	63119-2
	FINISH	63119-1
		PART NO.

THIS DRAWING IS A CONTROLLED DOCUMENT.		DWN	JR RUTH	7/28/86
DIMENSIONS: mm [INCHES]		CHK	G YETTER	1/15/87
TOLERANCES UNLESS OTHERWISE SPECIFIED:		APVD	R KUZO	1/15/87
0 PLC	± -	PRODUCT SPEC		
1 PLC	± -	APPLICATION SPEC	114-2074	
2 PLC	± -	WEIGHT	-	
3 PLC	± 0.25 .010	CUSTOMER DRAWING		
4 PLC	± -	SCALE	4:1	
ANGLES	± -	SHEET	1 OF 1	
FINISH	SEE TABLE	REV	P4	

**TE** TE Connectivity

RECPT, POSITIVE LOCK, .250 SERIES

SIZE: A2 CAGE CODE: 00779 DRAWING NO: 63119 RESTRICTED TO: -