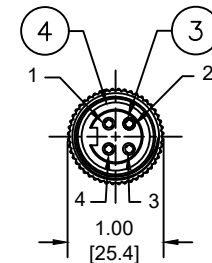
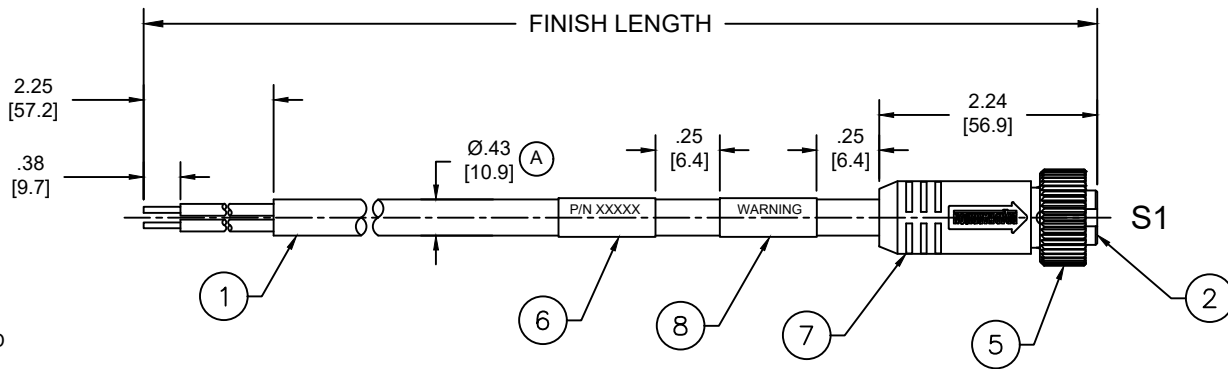
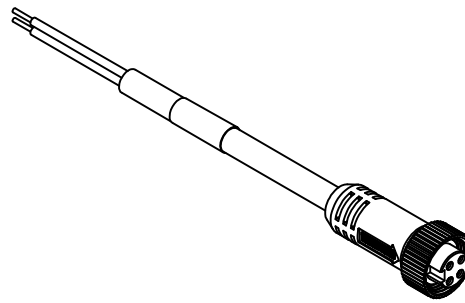


| MATERIAL NUMBER | ENGINEERING NUMBER | FINISHED LENGTH |
|-----------------|--------------------|------------------|
| 1300610077 | 104000A45M010 | 1M [3FT 3 IN] |
| 1300610086 | 104000A45M100 | 10M [32FT 10 IN] |
| 1300611009 | 104000A45M300 | 30M [98FT 5 IN] |

(A) PART NUMBER LEGEND

104000A45M010

LENGTH:
M005= 0.5 METER
M010= 1 METER
M100= 10 METER



NOTES:

- MATERIAL: AS NOTED
- FINISH: AS NOTED
- ELECTRICAL:
 - VOLTAGE: 483V PER IEC60664 (A)
 - 600V PER UL2237
 - CURRENT: 10A (A)
- TEMP RATING: -20°TO +105°C (A)
- PROTECTION: IP67 (WHEN MATED)
- COUPLING THREAD: 7/8"-16UN
- UL LISTED FILE: E258922
- ALL DIMENSIONS ARE FOR REFERENCE UNLESS TOLERANCED OR NOTED OTHERWISE

S1

| | |
|--------------|---|
| BLACK | 1 |
| WHITE | 2 |
| RED | 3 |
| GREEN/YELLOW | 4 |

(A)

CABLE LENGTH TOLERANCES

| |
|--|
| <.3M [1FT]: +19mm-0 [+ .75in-0] |
| .3 - .9M [1 - 3FT]: +44.5mm-0 [+1.75in-0] |
| .9 - 1.8M [3 - 6FT]: +55.6mm-0 [+2.19in-0] |
| 1.8 - 3.7M [6 - 12FT]: +88.9mm-0 [+3.50in-0] |
| 3.7 - 7.3M [12 - 24FT]: +165.1mm-0 [+6.50in-0] |
| 7.3-14.6M [24 - 48FT]: +317.5mm-0 [+12.50in-0] |
| 14.6 - 30.5M [48-100FT]: +622.3mm-0 [+24.50in-0] |
| OVER 30M [100FT] +2% OF FINISHED LENGTH |

WIRING DIAGRAM

| ITEM | DESCRIPTION | MATERIAL | FINISH |
|------|----------------|--------------|------------------|
| 8 | WARNING LABEL | VINYL | BLACK |
| 7 | OVERMOLD | TPE | GRAY |
| 6 | WRAP LABEL | VINYL | YELLOW |
| 5 | COUPLING NUT | ZINC ALLOY | BLACK E-COAT |
| 4 | FRICTION RING | NYLON | WHITE |
| 3 | SOCKET CONTACT | COPPER ALLOY | GOLD OVER NICKEL |
| 2 | INSERT | TPE | BLACK |
| 1 | #16/4 CABLE | PVC JACKET | GRAY |

| | | | | |
|--|---|------------------------|---|----------------------------|
| FUNCTIONAL SYMBOLS FA=0 FC=0 FE=0 | THIS DRAWING CONTAINS INFORMATION THAT IS PROPRIETARY TO MOLEX ELECTRONIC TECHNOLOGIES, LLC AND SHOULD NOT BE USED WITHOUT WRITTEN PERMISSION | | CURRENT REV DESC: ITEM 2 & 7 WERE PVC. SLEEVE & SOCKET SHOWN AS ITEM-3. ADDED IEC VOLTAGE, PN LEGEND, CABLE DIA & TOL CHART. MODIFIED TEMP RATING AND PN TABLE. | |
| | DIMENSION UNITS | SCALE | EC NO: 698916 | |
| | INCH/MM | NTS | DRWN: ABENJAMINLW | 2021/06/10 |
| | GENERAL TOLERANCES (UNLESS SPECIFIED) | | CHK'D: RSTONE | 2022/03/09 |
| DIVISIONAL SYMBOLS | mm | INCH | APPR: BWOODMAN | 2022/03/11 |
| | 4 PLACES ±---- | ±---- | INITIAL REVISION: | |
| | 3 PLACES ±---- | ±---- | DRWN: VOU | 2010/01/14 |
| | 2 PLACES ±---- | ±---- | APPR: JFMURPHY | 2010/01/20 |
| 1 PLACE ±---- | ±---- | THIRD ANGLE PROJECTION | | |
| 0 PLACES ±---- | ±---- | DRAWING | SERIES | DOCUMENT NUMBER |
| ANGULAR TOL ± ---- ° | | A-SIZE | 130061 | SD-130061-011 |
| DRAFT WHERE APPLICABLE MUST REMAIN WITHIN DIMENSIONS | | MATERIAL NUMBER | CUSTOMER | DOC TYPE/DOC PART/REVISION |
| | | SEE CHART | GENERAL MARKET | PSD 001 A |
| | | | | SHEET NUMBER |
| | | | | 1 OF 1 |

| | | | | |
|-----------------|----|--------------|------------|----------|
| DOCUMENT STATUS | P1 | RELEASE DATE | 2022/03/11 | 14:29:44 |
|-----------------|----|--------------|------------|----------|