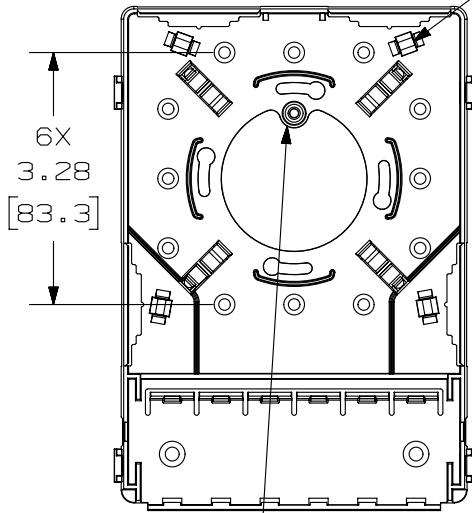


THIS COPY IS PROVIDED ON A RESTRICTED BASIS AND IS NOT TO BE USED IN ANY WAY DETRIMENTAL TO THE INTERESTS OF PANDUIT CORP.

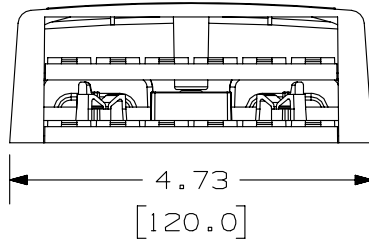
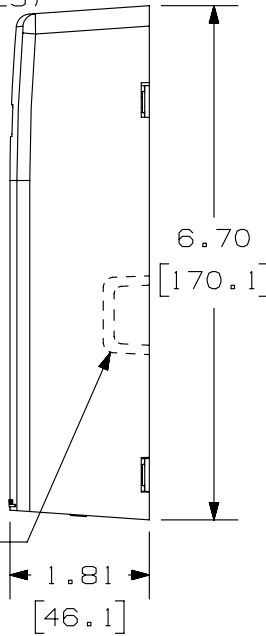
COVER REMOVED FOR CLARITY

PAN-TY LOOP FOR
CABLE HOLD-DOWN
(4 PLACES)



POST FOR TAMPER
RESISTANT SCREW

BREAKOUT AREA
(4 PLACES)



PANDUIT P/N	WEIGHT
CBXF12**-AY	3.3 LB/10 PCS (1496.8 g/10 PCS)

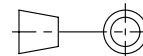
NOTES:

1. SEE CURRENT CATALOG FOR ADDITIONAL PART NUMBER SUFFIXES TO INDICATE COLOR AND OR PACKAGE QUANTITY.
2. SEE CATALOG FOR A COMPLETE LIST OF PARTS APPLICABLE FOR USE WITH THIS PART.
3. DIMENSIONS IN PARENTHESES ARE IN METRIC.
4. ALSO INCLUDED WITH BOX:
 - 1- BOX BASE
 - 1- BOX COVER
 - 1- BRIDGE
 - 2- PLT1.5I-C PAN-TY
 - 1- LABEL/ LABEL COVER
 - 2- MOUNTING SCREW
 - 1- COVER SCREW (USED TO SECURE COVER TO BASE)
 - 2- STRIP OF 1.00" X .75" FOAM TAPE FOR MOUNTING
 - 1- STRIP OF 3.00" X .75" FOAM TAPE FOR MOUNTING
5. BREAKOUTS DESIGNED TO ACCEPT LD3/LDPH3, LD5/LDPH5, OR LD10/LDPH10 RACEWAY.
6. BASE MATERIAL THICKNESS= .090 [2.29].

NO WARRANTY, EXPRESSED OR IMPLIED, IS MADE BY PANDUIT WITH RESPECT TO ADHESIVE BOND PERFORMANCE. AMONG OTHER THINGS, THE CONDITIONS UNDER WHICH THESE MOUNTS MAY BE APPLIED AND/OR THE SURFACE TO WHICH THEY MAY BE APPLIED ARE BEYOND PANDUIT'S CONTROL.

PART NUMBER		CBXF12**-AY				
TITLE						
MINI-COM 12 POSITION MULTI-MEDIA FIBER SURFACE MOUNT BOX						
CUSTOMER DRAWING						
ITEM REVISION NAME		M02479ES/00				
DATASET FILE NAME		M02479ES_DC125/00B				
UNLESS OTHERWISE SPECIFIED, DIMENSIONAL TOLERANCES ARE: IN [mm]		MATERIAL:				
.x ± .xxx ± .010 [.3]		ABS				
.xx ± .03 [.8]		DRAWING NUMBER:				
THIRD ANGLE PROJECTION		02479-125				
DRAWN BY	DATE	CHK	SCALE			
JSP	1-19-07	MJD	NONE			
REV	DATE	BY	DESCRIPTION			
1	3/17/14	JSP	REFR MMR A. REVISED DRAWING TITLE BLOCK.			
R	1-19-07	JSP	MJD MJD RELEASED TO PRODUCTION			
REV	DATE	BY	CHK	APR	DESCRIPTION	ECN

PANDUIT



THIRD ANGLE PROJECTION

D101000DA/14