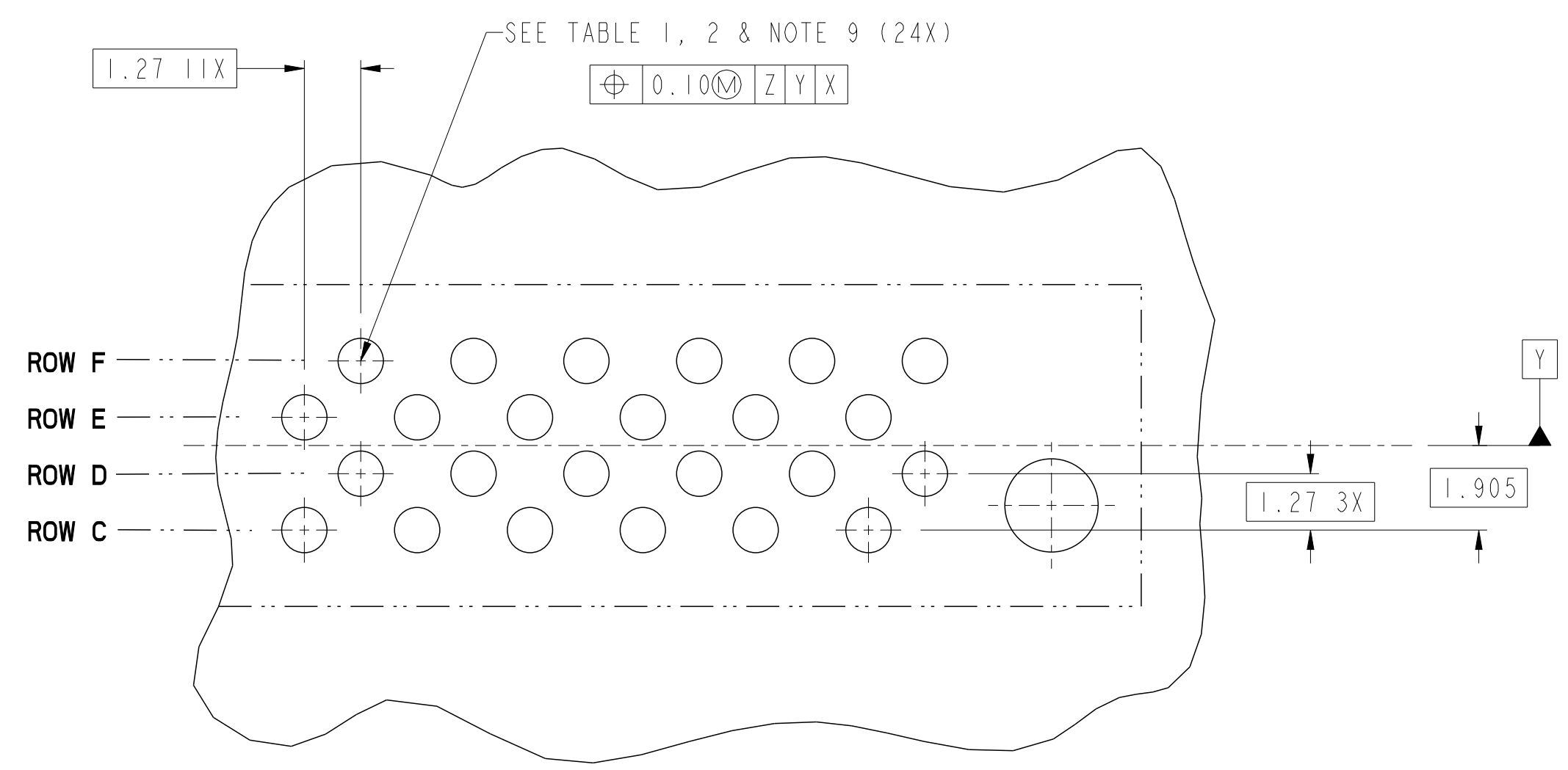
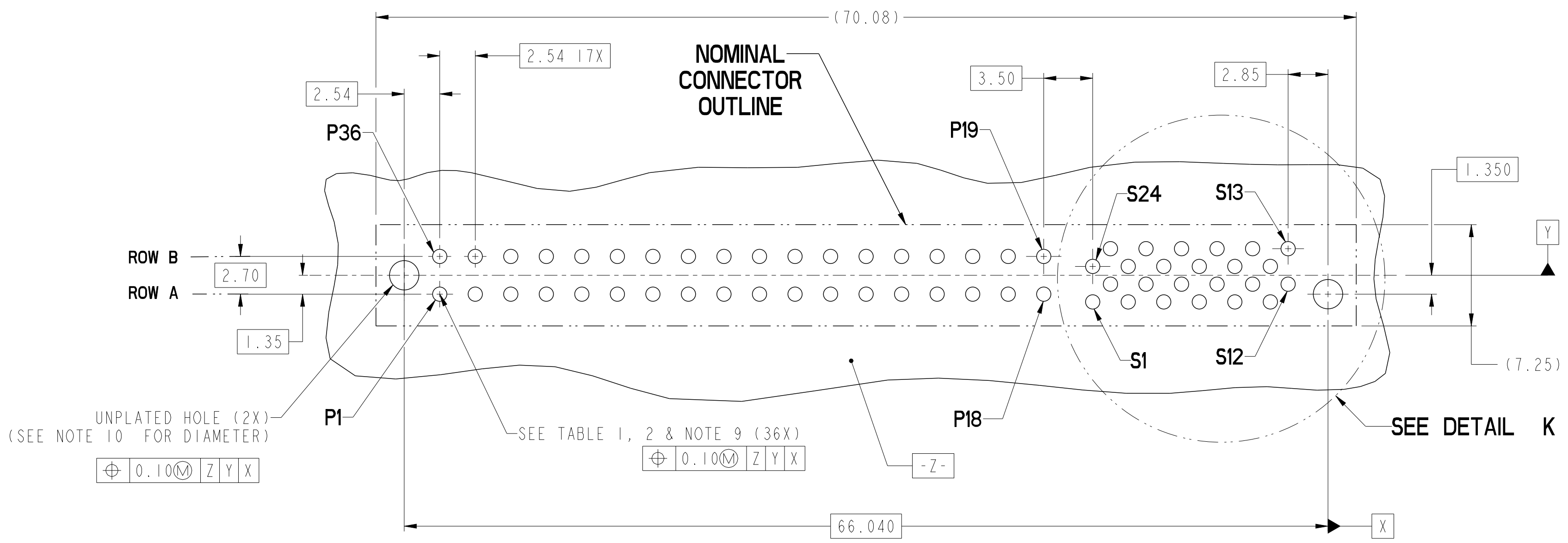
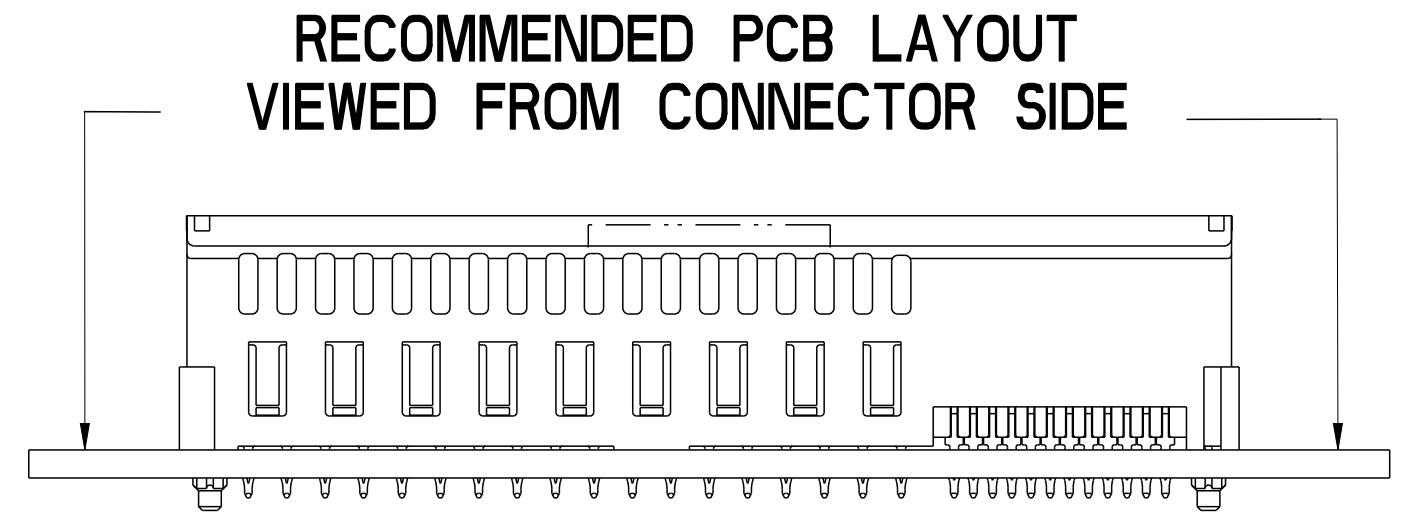


<table border="1"> <tr><td>rev</td><td>ecn no</td><td>dr</td><td>date</td></tr> <tr><td>1</td><td>-</td><td>HT</td><td>2012-01-05</td></tr> <tr><td>-</td><td>-</td><td>-</td><td>-</td></tr> <tr><td>-</td><td>-</td><td>-</td><td>-</td></tr> <tr><td>-</td><td>-</td><td>-</td><td>-</td></tr> <tr><td>-</td><td>-</td><td>-</td><td>-</td></tr> <tr><td>-</td><td>-</td><td>-</td><td>-</td></tr> </table>		rev	ecn no	dr	date	1	-	HT	2012-01-05	-	-	-	-	-	-	-	-	-	-	-	-	-	-	-	-	-	-	-	-	spec ref - tolerance std ASME Y14.5 surface <input checked="" type="checkbox"/> linear ASME Y14.5 angular 0° ±2°		TOLERANCES UNLESS OTHERWISE SPECIFIED 0.X ±0.3 0.XX ±0.1 0.XXX ±0.05		dr Wei-Long Zhang 2012/01/05 eng Wei-Long Zhang 2012/03/05 chr - appr Pei-Ming Zheng 2012/03/05		projection size A2 scale 4:1		product family CARD EDGE rel level Released		title VERT RECT (36P 24S) HIGH POWER CARD EDGE cat. no. - Product - Customer Drw		dwg no 10119884 sheet 1 of 4		rev A	
rev	ecn no	dr	date																																										
1	-	HT	2012-01-05																																										
-	-	-	-																																										
-	-	-	-																																										
-	-	-	-																																										
-	-	-	-																																										
-	-	-	-																																										

Copyright FCI. FCI



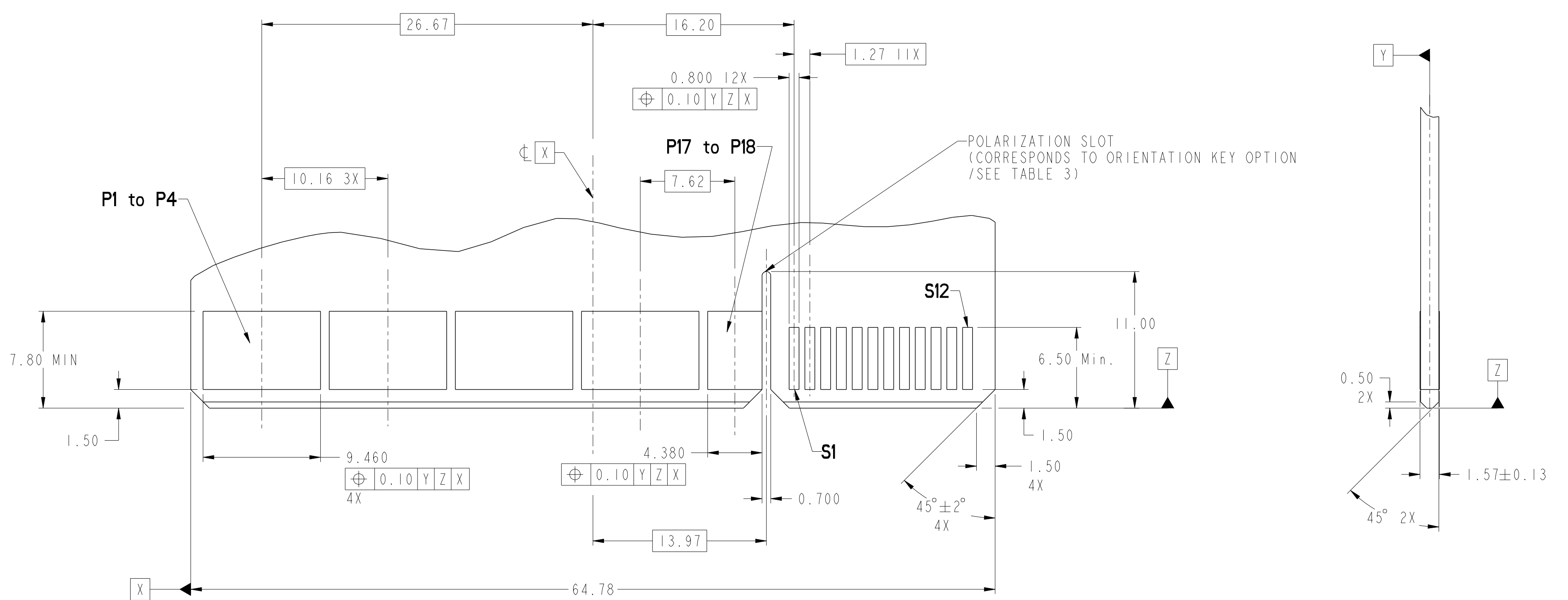
DETAIL K
SCALE 8:1



dr	Wei-Long Zhang	2012/01/05	projection	MM	size	A2	scale	4:1
eng	Wei-Long Zhang	2012/03/05			ecn no	-	rel level	Released
chr	-	-			product family	CARD EDGE		
appr	Pei-Ming Zheng	2012/03/05			cat. no.	-	Product - Customer Drw	sheet 2 of 4
title VERT RECT (36P 24S) HIGH POWER CARD EDGE			dwg no 10119884		rev A			

CONTACT TYPE	TOP LAYER DESCRIPTION	TABLE 1 (HPCE / SOLDER TAILS) PLATED THROUGH-HOLE REQUIREMENTS				
		DRILLED HOLE DIAMETER	COPPER THICKNESS	TIN-LEAD THICKNESS	TIN THICKNESS	FINISHED HOLE DIAMETER
POWER & SIGNAL	TIN-LEAD	1.10-1.16 (1.15 DRILL)	0.025 - 0.050	0.005 - 0.015	--	0.94 - 1.10
	IMMERSION TIN	1.10-1.16 (1.15 DRILL)	0.025 - 0.050	--	0.9 - 1.5um	0.94 - 1.10
	COPPER (SEE NOTE 8)	1.10-1.16 (1.15 DRILL)	0.025 - 0.050	--	--	0.94 - 1.10

CONTACT TYPE	TOP LAYER DESCRIPTION	TABLE 2 (HPCE / PRESS-FIT TAILS) PLATED THROUGH-HOLE REQUIREMENTS				
		DRILLED HOLE DIAMETER	COPPER THICKNESS	TIN-LEAD THICKNESS	TIN THICKNESS	FINISHED HOLE DIAMETER
POWER & SIGNAL	TIN-LEAD	0.81-0.86 (0.85 DRILL)	0.025 - 0.050	0.005 - 0.015	--	0.65 - 0.80
	IMMERSION TIN	0.81-0.86 (0.85 DRILL)	0.025 - 0.050	--	0.9 - 1.5um	0.70 - 0.80
	COPPER (SEE NOTE 8)	0.81-0.86 (0.85 DRILL)	0.025 - 0.050	--	--	0.70 - 0.80

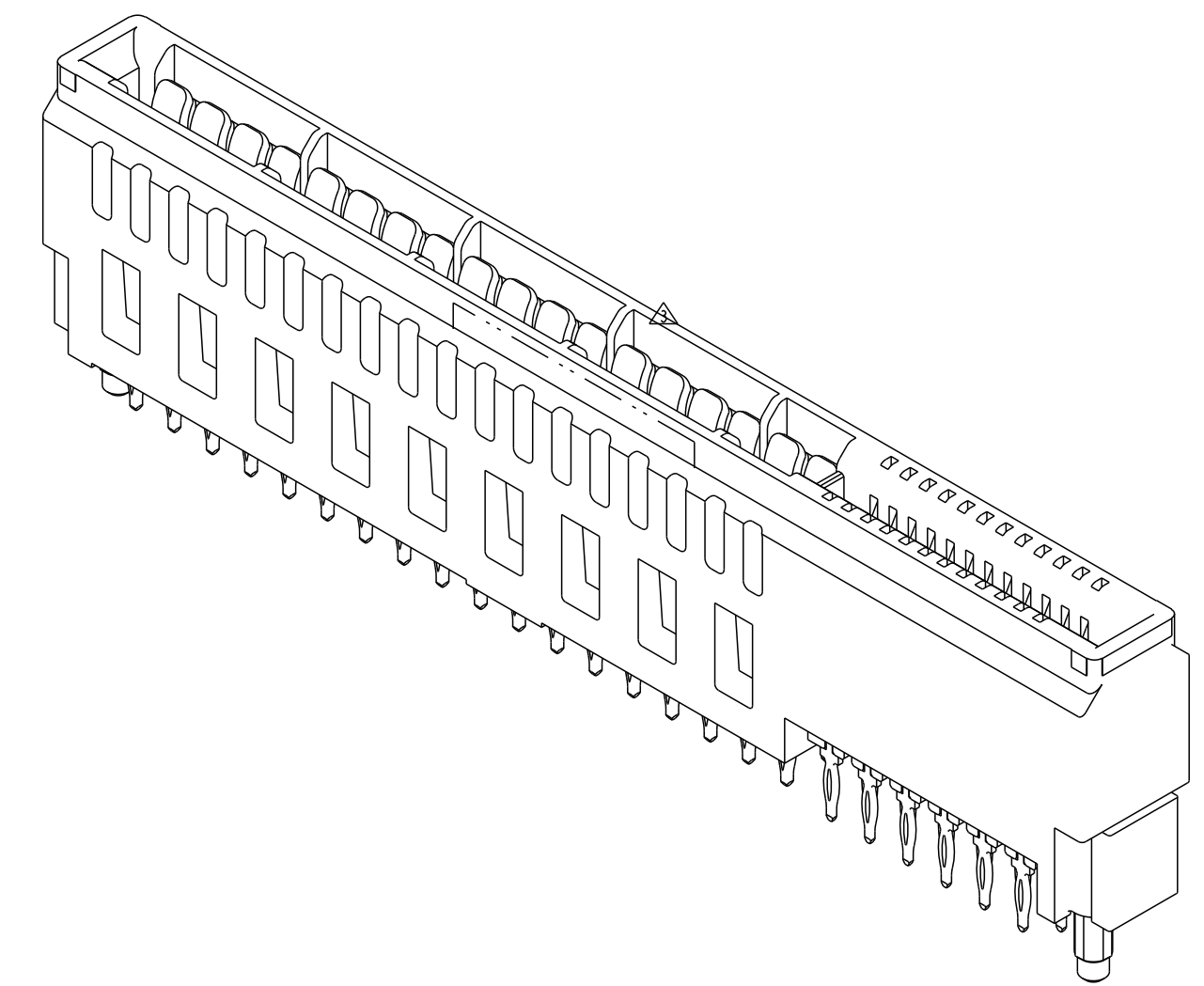


RECOMMENDED MATING BOARD FOOTPRINT

dr	Wei-Long Zhang	2012/01/05	projection	MM	size	A2	scale	4:1
eng	Wei-Long Zhang	2012/03/05			ecn no	-	rel level	Released
chr	-	-						
appr	Pai-Ming Zheng	2012/03/05	product family	CARD EDGE	rel level	Released		
		VERT RECT (36P 24S) HIGH POWER CARD EDGE			dwg no 10119884	rev A		
www.fci.com		cat. no.	Product - Customer Drw			sheet 3 of 4		

HPCE PART NUMBER (TABLE 3)

PART NUMBER	TAIL TYPE	ORIENTATION KEY	DIM "A" TYPICAL TAIL LENGTH	DIM "B" RECOMMENDED BOARD THICKNESS	SPECIFIED APPLICATION TOOL
10119884-001LF	SOLDER	YES	3.17 ±0.25	1.59 - 2.38	NO
10119884-002LF	SOLDER	NO			
10119884-003	PRESS-FIT	YES	3.17 ±0.25	1.57 MIN	YES NOTE 11
10119884-003LF	PRESS-FIT	YES			
10119884-004	PRESS-FIT	NO			
10119884-004LF	PRESS-FIT	NO			



NOTES:

1. CONNECTOR MATERIALS:

HOUSING: HIGH TEMPERATURE THERMAL PLASTIC, BLACK
UL 94V-0 COMPLIANT
CONTACTS: HIGH PERFORMANCE COPPER ALLOY.

2. CONTACT FINISH REF. GS-12-604 SECTION 5.2.

3. PRODUCT SPECIFICATION: GS-12-604.

4. APPLICATION SPECIFICATION: GS-20-128.

5. PRODUCT MARKING (FCI - PART NUMBER & DATE CODE) ON HOUSING IN AREA SHOWN.

6. PACKAGING MEETS FCI SPECIFICATION GS-14-937.

7. HOUSING COMPONENT WILL WITHSTAND EXPOSURE TO 260°C PEAK TEMPERATURE FOR 60 SECONDS IN A CONVECTION, INFRA-RED, OR VAPOR PHASE REFLOW OVEN.

8. COPPER PLATING THICKNESS IN CENTER OF VIA-HOLE CAN BE NO MORE THAN 0.003 LESS THAN OTHER AREAS.

9. ALL HOLE SIZES ARE FINISHED HOLE SIZES.

10. MOUNTING HOLES ARE UNPLATED
 Ø 2.40 +/- 0.10 FOR PRESS-FIT TAILS
 Ø 2.25 +/- 0.05 FOR SOLDER TAILS

11. APPLICATION TOOL DRAWING: 10119453.

dr	Wei-Long Zhang	2012/01/05	projection	MM	size	A2	scale	4:1
eng	Wei-Long Zhang	2012/03/05			ecn no	-		
chr	-	-			rel level	Released		
appr	Pai-Ming Zheng	2012/03/05	product family	CARD EDGE	rel level	Released		
			title	VERT RECT (36P 24S)		dwg no	10119884	rev
www.fci.com			cat. no.	-	Product - Customer Drw	sheet 4 of 4	A	