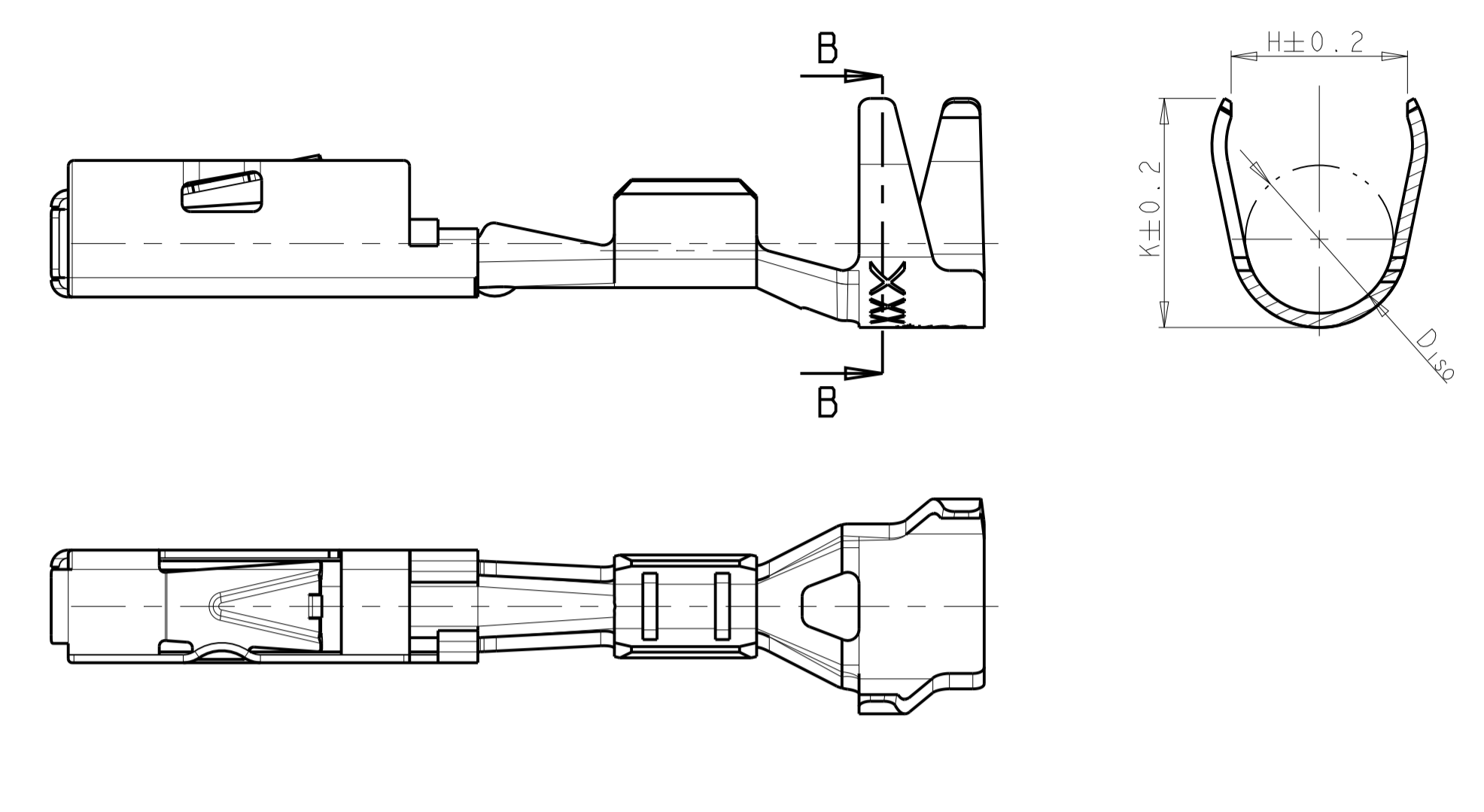
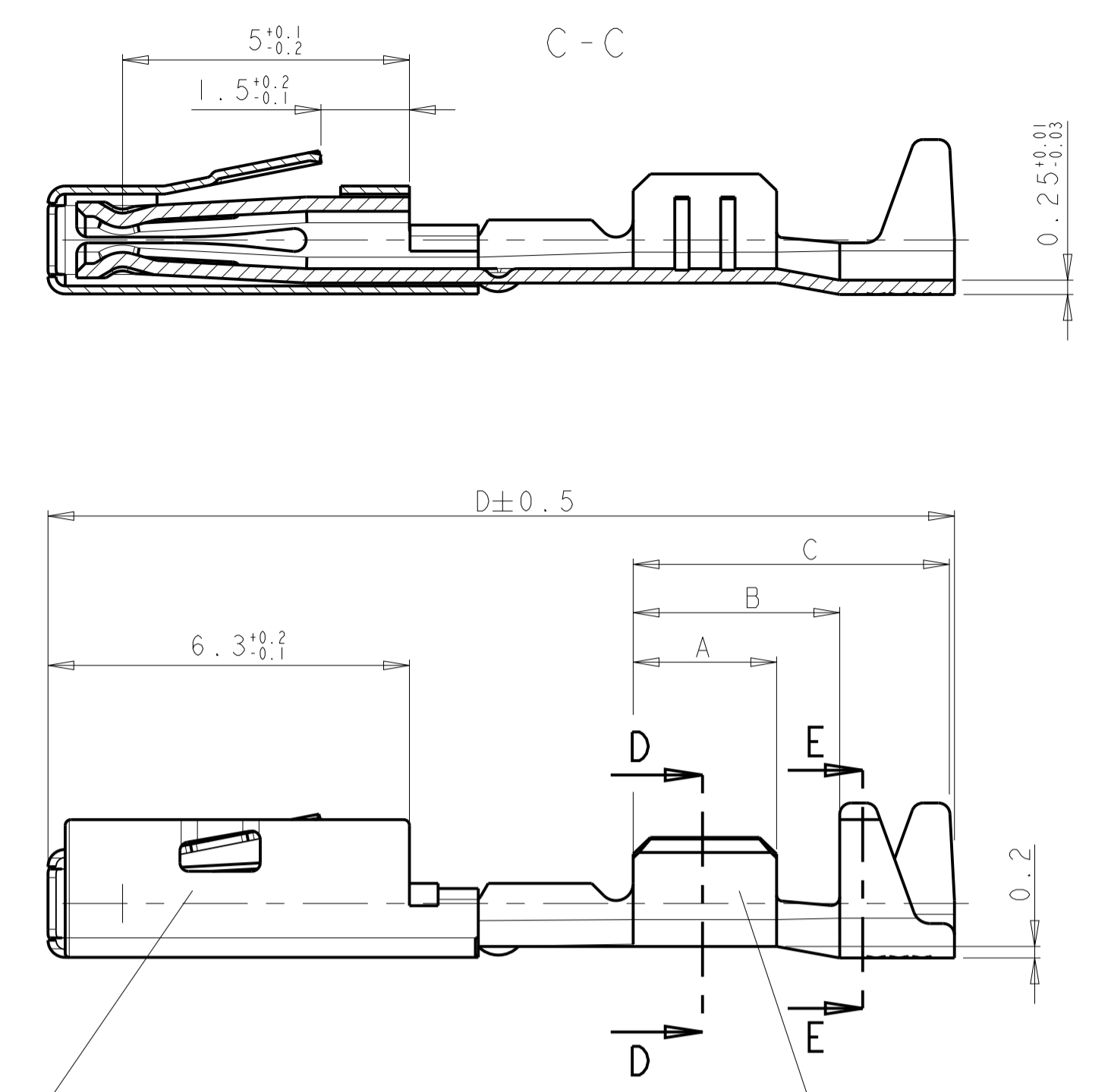


Einzel-Dichtungs-System
 SINGLE WIRE SYSTEM

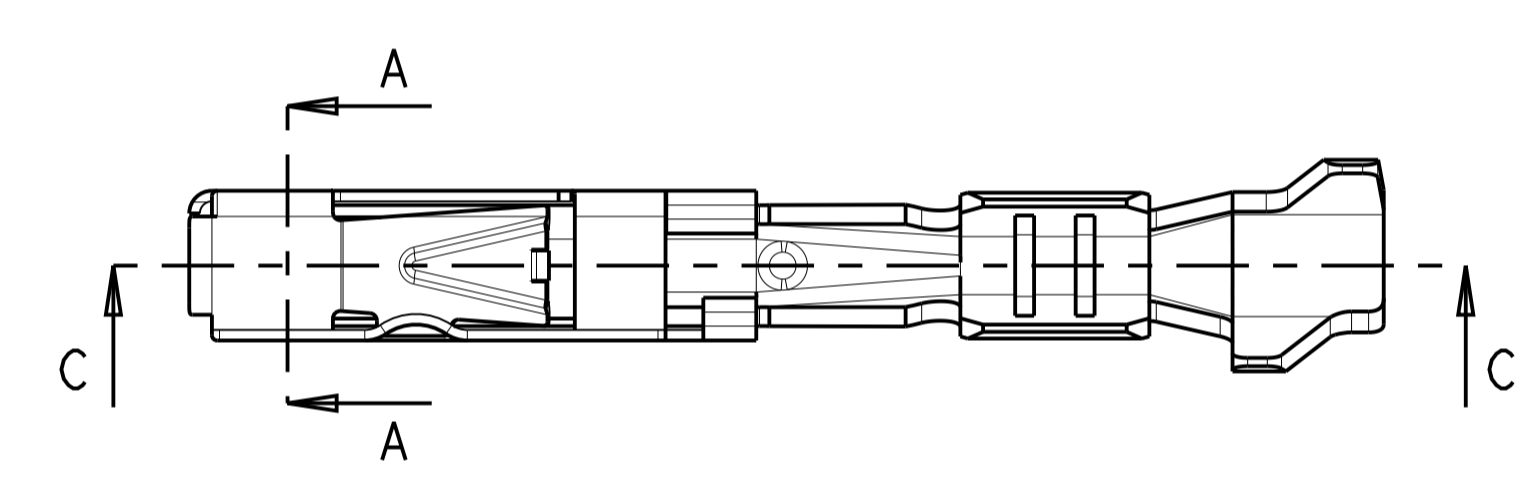
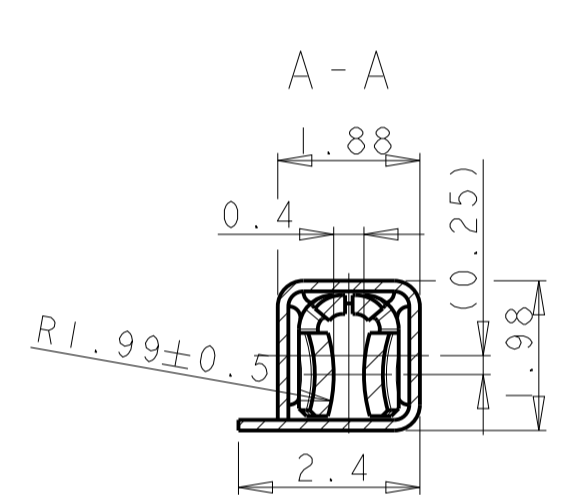


Normale Anwendung
 USUAL APPLICATION

Überfeder / SPRING
 Material: X12CrNi17 7
 DIN 17224
 Oberfläche: blank
 SURFACE: UNCOATED

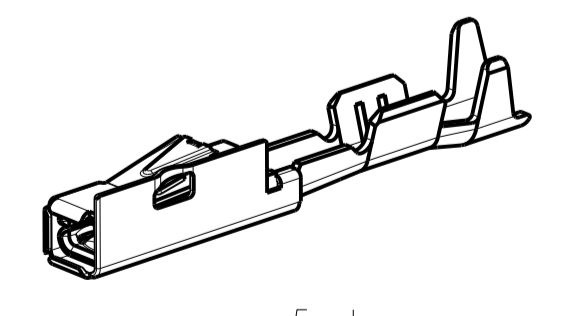


Kontaktkörper / BODY
 Material: CuNiSi F57
 Oberfläche: siehe Tabelle
 SURFACE: SEE CHART



Bemerkungen
 NOTES

- Einzelheiten der Ausführung bleiben dem Hersteller ueberlassen
 DETAILS OF DESIGN ARE LEFT TO MANUFACTURER
- Nur fuer FLR-Leitung nach DIN 72551, Teil 1
 FOR FLR-CONDUCTOR ACCORDING TO DIN 72551-6 ONLY



5:1

| TE BESTELL-NR. ORDER NO. | REV. | VERSION | DGB WIRE-SIZE-RANGE [mm ²] | Oberfläche SURFACE | ART KIND | GRAMM GEWICHT WEIGHT | Länge LENGTH | Drahtcrimp WIRE CRIMP | Iso' crimp INSU. CRIMP | DGB [mm ²] | Isolations- INSUL.-DIA. [mm] | 3.6mm | | 4mm | |
|--------------------------------|------|---------|--|-----------------------|-------------|----------------------------|---|---|--|---------------------------|------------------------------------|-------------------------------|-------|-------------------------------|------------------|
| | | | | | | | | | | | | für Kommer- FOR CAVITY-DIA | 3.6mm | für Kommer- FOR CAVITY-DIA | 4mm |
| 1355662-3 | B | | 0.75-1.5 | Ag | c | 0.2 | A = 3.5 B = 5.3 C = 7.5 D = 16.4 | E = 2.7 G = 2.9 D _{DR} = 1.4 | H = 3.6 K = 3.9 D _{ISO} = 2.9 | 1.0 1.5 | 1.9-2.4 | - | - | AMP: 963142-1 | schwarz BLACK |
| 1355662-1 | B | | 0.75-1.5 | Sn | c | 0.2 | A = 3.5 B = 5.3 C = 7.5 D = 16.4 | E = 2.7 G = 2.9 D _{DR} = 1.4 | H = 3.6 K = 3.9 D _{ISO} = 2.9 | 1.0 1.5 | 1.9-2.4 | - | - | AMP: 963142-1 | schwarz BLACK |
| 1355663-3 | B | | 0.35-0.5 | Ag | c | 0.2 | A = 2.5 B = 4.3 C = 6.5 D = 16.4 | E = 1.9 G = 1.9 D _{DR} = 0.8 | H = 3.1 K = 4 D _{ISO} = 2.6 | 1.0 1.5 | 1.9-2.4 | - | - | AMP: 963142-1 | schwarz BLACK |
| 1355663-1 | B | | 0.35-0.5 | Sn | c | 0.2 | A = 2.5 B = 4.3 C = 6.5 D = 16.4 | E = 1.9 G = 1.9 D _{DR} = 0.8 | H = 3.1 K = 4 D _{ISO} = 2.6 | 1.0 1.5 | 1.9-2.4 | - | - | AMP: 963142-1 | schwarz BLACK |
| 929398-1 | B | | 0.75-1.5 | Ag | c | 0.2 | A = 3.5 B = 5.1 C = 7.7 D = 16.4 | E = 2.7 G = 2.9 D = 1.4 | H = 3.7 K = 3.9 D = 2.1 | 1.0 1.5 | 1.9-2.4 | - | - | AMP: 963142-1 | schwarz BLACK |
| 929398-1 | B | | 0.75-1.5 | Sn | c | 0.2 | A = 3.5 B = 5.1 C = 7.7 D = 16.4 | E = 2.7 G = 2.9 D = 1.4 | H = 3.7 K = 3.9 D = 2.1 | 1.0 1.5 | 1.9-2.4 | - | - | AMP: 963142-1 | schwarz BLACK |
| 929396-1 | B | | 0.35-0.5 | Ag | c | 0.2 | A = 2.5 B = 3.6 C = 5.6 D = 15.8 | E = 1.9 G = 1.9 D = 0.8 | H = 2.7 K = 2.7 D = 1.4 | 1.0 1.5 | 1.9-2.4 | - | - | AMP: 963142-1 | schwarz BLACK |
| 929396-1 | B | | 0.35-0.5 | Sn | c | 0.2 | A = 2.5 B = 3.6 C = 5.6 D = 15.8 | E = 1.9 G = 1.9 D = 0.8 | H = 2.7 K = 2.7 D = 1.4 | 1.0 1.5 | 1.9-2.4 | - | - | AMP: 963142-1 | schwarz BLACK |

THIS DRAWING IS A CONTROLLED DOCUMENT.
 DIESES ZEICHNUNGSSTÜCK WIRD DURCH AMP INCORPORATED KONTROLLIERT.
 ADOPTIÖNEN, DIE EIN TECHNISCHE FORTSCHRITTSSTADIUM, SIND VERBODEN.
 ALL RIGHTS RESERVED. ALLE RECHTEN VOORBEHALTEN.

DIMENSIONS: MASSEINHEITEN: mm
 TOLERANCES: UNLESS OTHERWISE SPECIFIED: ALLGEMEIN: UNBESCHRÄNKTE

0 PLC ±: DIN
 1 PLC ±: 6930- m
 2 PLC ±:
 3 PLC ±:
 4 PLC ±:
 ANGLES: UNLESS OTHERWISE SPECIFIED: 45°

FINISH/OBERFLÄCHE/FARBE: -

DWN: S. GARCIA 26-Okt-98
 CHK: R. Jetter 26-Okt-98
 APVD: -

NAME: Produktgruppenzchnng./PRODUCT GROUP DWG
 PRODUCT SPEC: 108-18030
 APPLICATION SPEC: MOSI.2 Buchsenkontakt
 VERABREITUNGSSPEZ.: MOSI.2 SOCKET CONTACT, CRIMP SNAP-IN
 SIZE: A1
 CAGE CODE: -
 DRAWING NO.: 929419
 REVISIONS: -

Customer Drawing /KUNDENZEICHNUNG SCALE: 10:1 SHEET: 1 OF 1 REV: B2