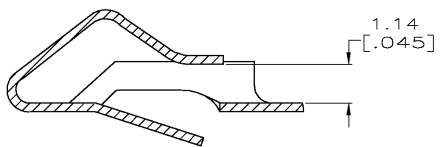
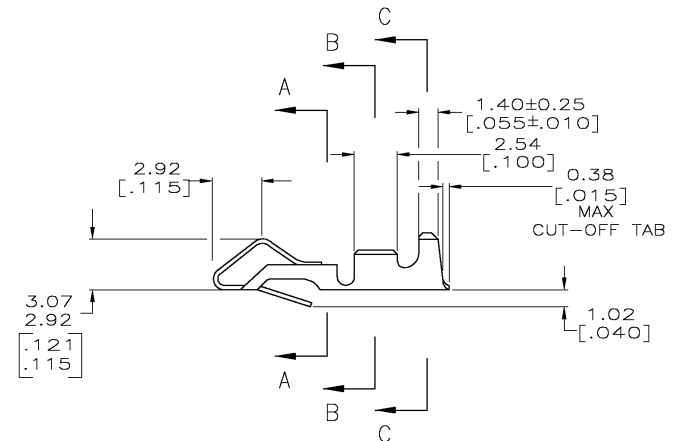
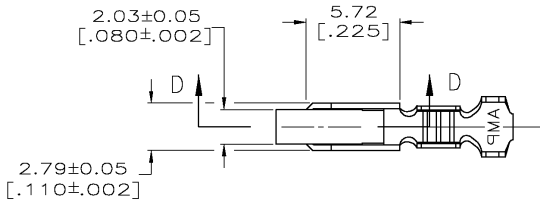
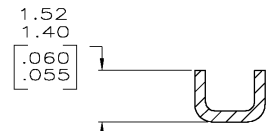


LOC	DIST	REVISIONS			
P	U/R	DESCRIPTION	DATE	DMN	APVD
CM	00	E	REV PER ECN 0638-0383-03	21AUG03	SC JE

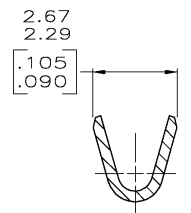
- ① 0.00203 [.000080] MIN BRIGHT TIN-LEAD OVER  
0.00127 [.000050] MIN NICKEL.
- ② 0.00330 [.000130] MAX PRE-TIN.
- 3. WIRE RANGE: 0.2-0.9mm<sup>2</sup> (24-18 AWG).  
INSULATION RANGE: 2.79 [.110] DIA MAX.
- 4. DIMENSIONS IN BRACKETS ARE IN INCHES.
- ⑤ 0.00203 [.000080] MIN BRIGHT TIN OVER  
0.00127 [.000050] MIN NICKEL.



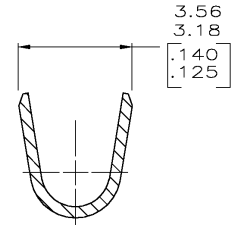
SECTION D-D  
SCALE 10:1



SECTION A-A  
SCALE 10:1



SECTION B-B  
SCALE 10:1



SECTION C-C  
SCALE 10:1

METRIC

⑤	3-640706-1
②	640706-2
①	640706-1
FINISH	PART NO

THIS DRAWING IS A CONTROLLED DOCUMENT.		DMN S. CARPENTER 21AUG2003	Tyco Electronics Corporation Harrisburg, PA 17105
DIMENSIONS: INCHES		CHK J. ELLIS 21AUG2003	
TOLERANCES UNLESS OTHERWISE SPECIFIED:		APVD J. ELLIS 21AUG2003	RECEPTACLE, SL-156, LOOSE PIECE
0 PLC ± 1 PLC ± 2 PLC ± 0.13 [.005] 3 PLC ± 4 PLC ± ANGLES ±		NAME J. ELLIS	
MATERIAL 0.33 [.013] BRASS		FINISH SEE TABLE	RESTRICTED TO
WEIGHT		SIZE A2	CAGE CODE 00779
CUSTOMER DRAWING		DRAWING NO 640706	SCALE 5:1
		SHEET 1	OF 1
		REV E	

A/C BUSINESS GROUP, 3323 177-34 KIM SALMONY

640706