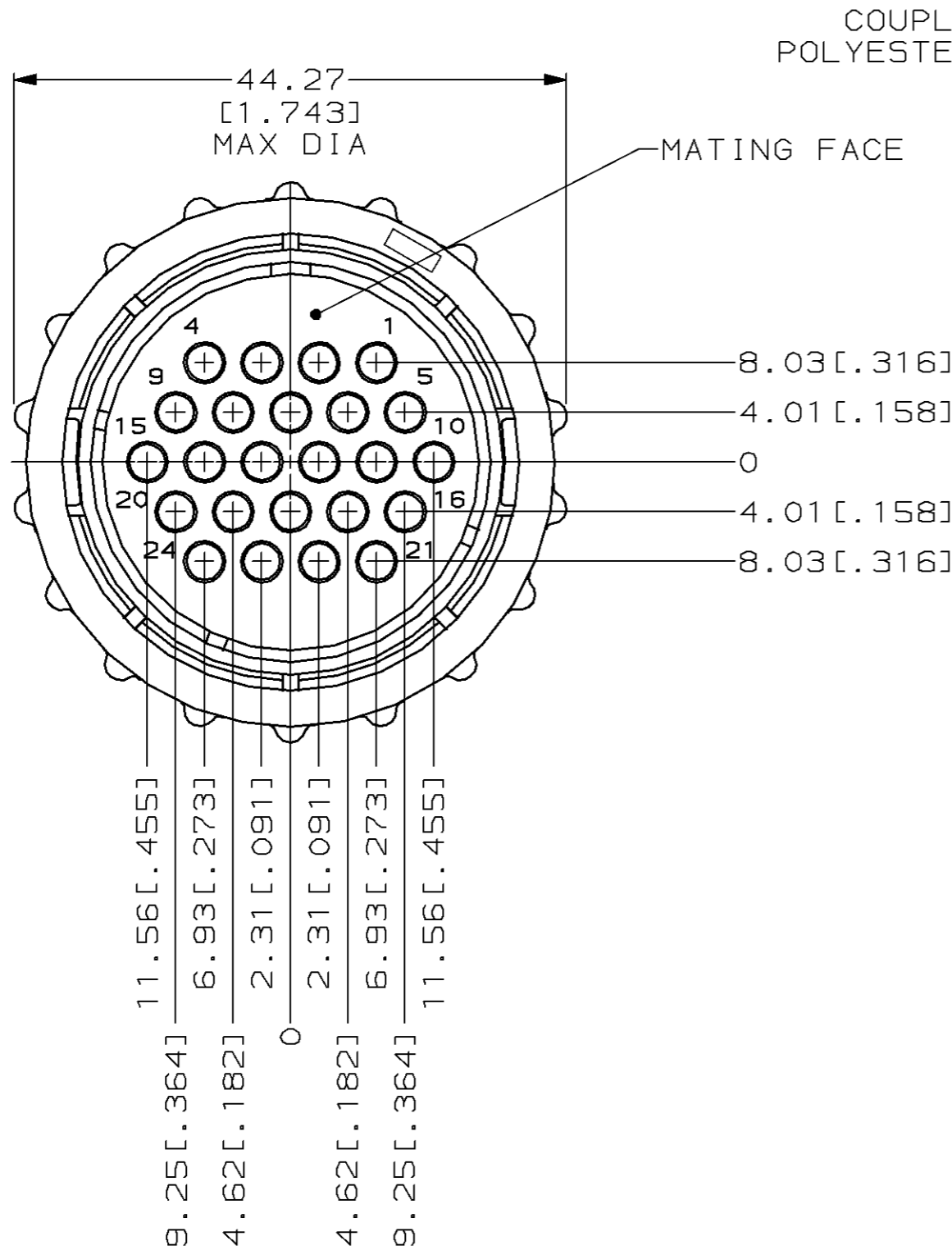


THIS DRAWING IS UNPUBLISHED. RELEASED FOR PUBLICATION, 19 .
 © COPYRIGHT 19 BY AMP INCORPORATED. ALL INTERNATIONAL RIGHTS RESERVED.

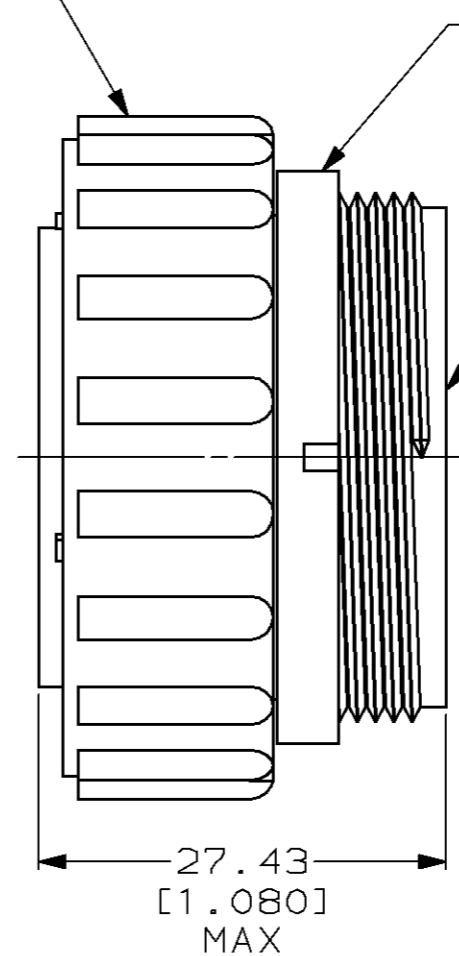
LOC	DIST	P	F	REVISIONS				
				ZONE	LTR	DESCRIPTION	DATE	APPD
FT	4				0	RLSE PER NPR 5254 WAS 94-5029-029-01	01/04/95	AF
					A	REV PER EC 0020-68-95	02/08/95	AF
					B	REV PER EC 0320-7-97	16 JAN 97	KD



COUPLING RING
POLYESTER, BLACK

AMP & PART NO
ON THIS DIA

PLUG HOUSING
NYLON 6/6,
GLASS FILLED,
BLACK



213851-1
PART NUMBER

1. THIS CONNECTOR WILL ACCEPT (24) MULTIMATE SOCKET CONTACTS.
2. CONTACT CAVITIES IDENTIFIED BY CHARACTERS ON FRONT AND REAR FACE OF CONNECTOR.

DO NOT SCALE PRINT, UNLESS SPECIFIED DIMENSIONS IN mm [INCHES] TOLERANCES ON: 2 PLC DEC ± 0.13 [.005] 3 PLC DEC ± - ANGLES ± -	DR 01/04/95 K.FOLTZ	AMP AMP Incorporated Harrisburg, PA 17105-3608	
	CHK 01/09/95 R.STONE		
	APPD 01/10/95 T.COULSON	NAME PLUG ASSEMBLY, STANDARD SEX, SIZE 23, SERIES I, CPC	
	APPD 01/16/95 A.FRANTUN	SIZE B CAGE CODE 00779 DRAWING NO 213851	
MATERIAL SEE CALLOUT	PRODUCT SPEC -	SCALE 2:1	SHEET 1 OF 1
FINISH -	APPLICATION SPEC -		
	WEIGHT -		