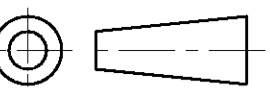


DO NOT SCALE

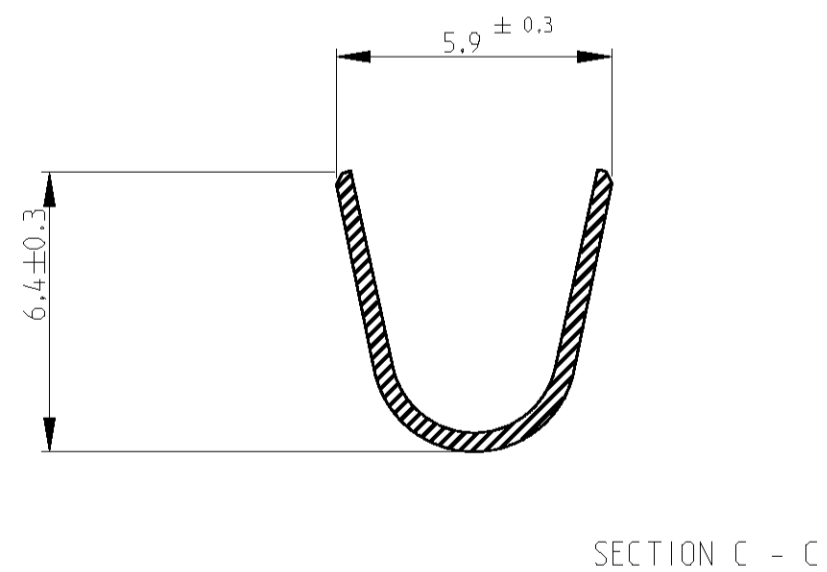
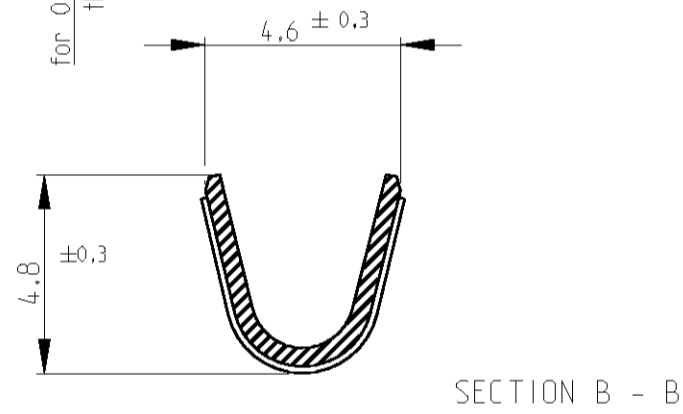
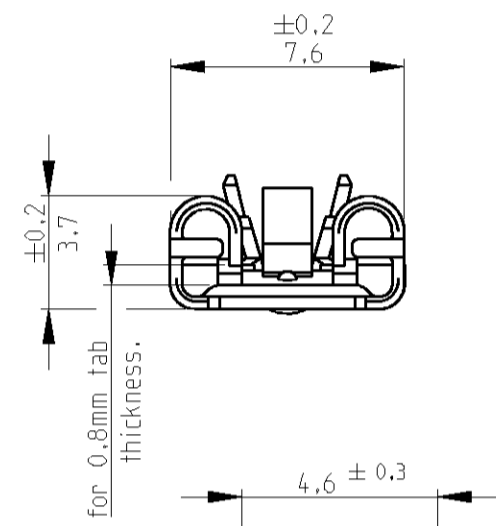
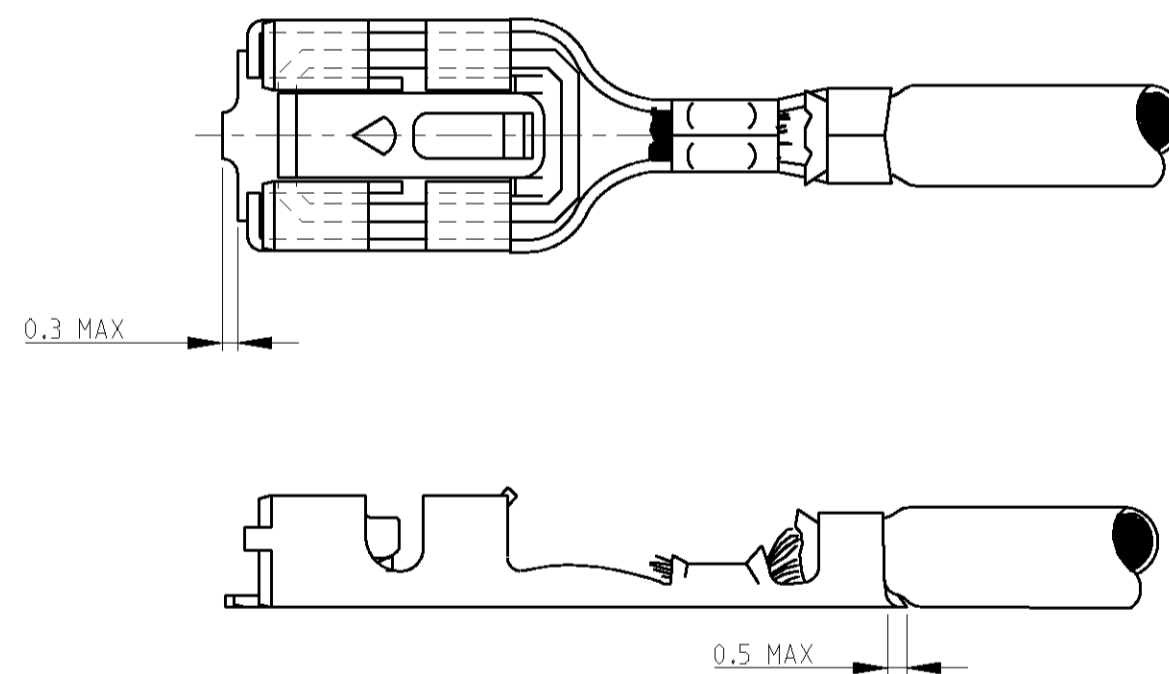
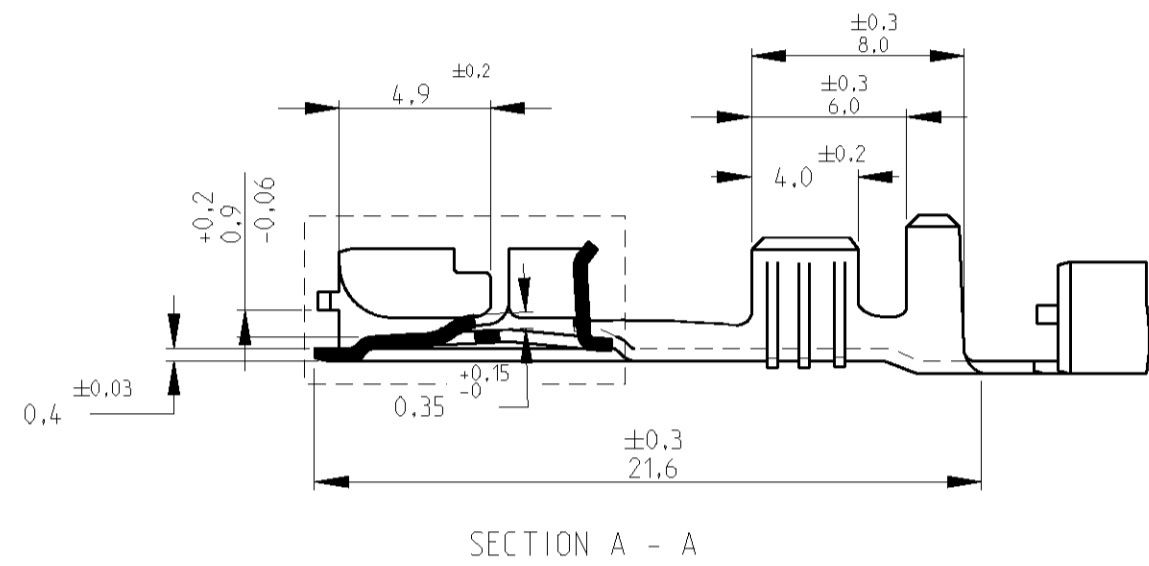
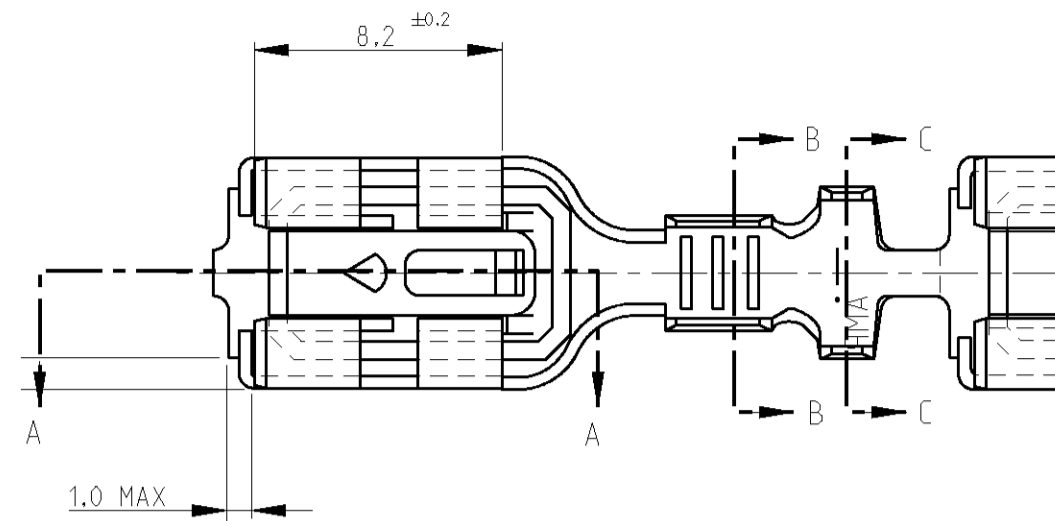
DIMENSIONS IN mm

METRIC

THIRD ANGLE
PROJECTION

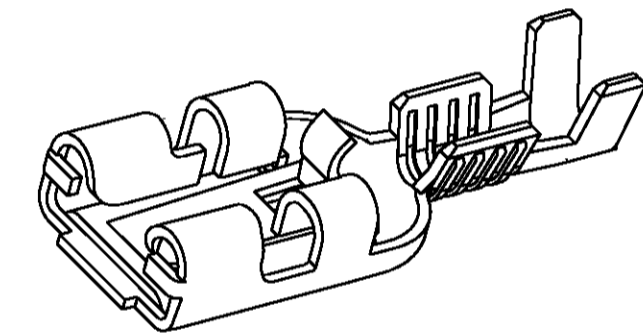


LOC	DIST	REVISIONS			
P	LTR	DESCRIPTION	DATE	DWN	APVD
AD	47	L1	REVISED PER ECO-09-026346	26NOV09	KK AEG



NOTES :

- FOR USE ON MINI HD APPLICATOR (LEFT - RIGHT FEED).
- TINPLATING THICKNESS .000080 MIN - .000400 MAX. (INCH).
- MATERIAL PH.BRONZE ACC ASTM B103 ALLOY 511.
- REAR ROLLING MUST TOUCH TAB.
- OBsolete PARTS: OBSOLETE CIS STREAMLINING PER D.RENAUD/D.SINISI**



WIRE	CRIMP HEIGHT	CRIMP WIDTH
3.0mm?	2.16mm	.130 'F'
3.5mm?	2.27mm	.130 'F'
4.0mm?	2.38mm	.130 'F'

5 OBsolete		100017-4	PRE-TINPLATED	PH.BRONZE	216331-4
		100017-3	SILVERPLATED	PH.BRONZE	216331-3
		100017-2	TINPLATED	PH.BRONZE	216331-2
		100017-1	UNPLATED	PH.BRONZE	216331-1
		LOOSE PIECE NR.	FINISH	MATERIAL	PARTNUMBER
CUSTOMER DRAWING FOR REFERENCE ONLY WILL NOT BE UPDATED		tyco Electronics		TYCO ELECTRONICS AMP ESPAÑOLA S.A BARCELONA ESPAÑA	
		THIS DRAWING IS UNPUBLISHED		CUSTOMER DRAWING	
DIRECTION OFF TOP OF REEL 107 - 3 FIG 6.		DR. R.v.Lokven DATE 24.04.89 WIRE RANGE +2.5-4.0mm? NAME .250 L.I.F AUTOMOTIVE POS LOCK REC MKII.		REV. DATE	
		CHK. R.v.Lokven DATE 24.04.89 INSUL RANGE 3.0-4.2 DIA		D M Y	
		APP. L.v.Soest DATE 26-11-89 SIZE A2 SHEET 1 OF 1 DWG. No. C-216331		2611 09	
				REV. LTR.	