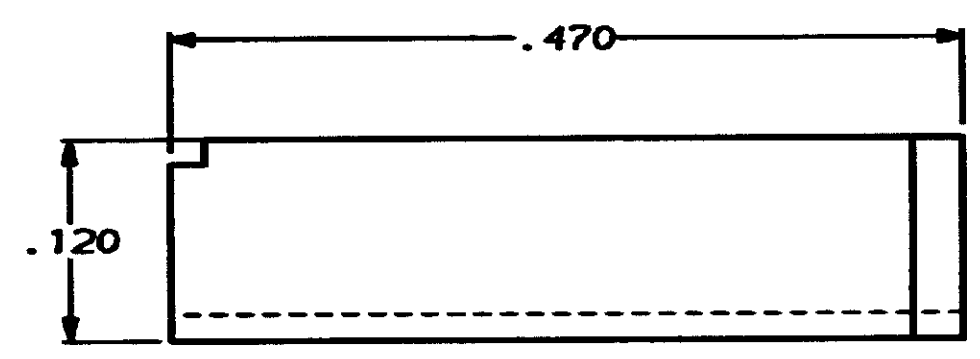
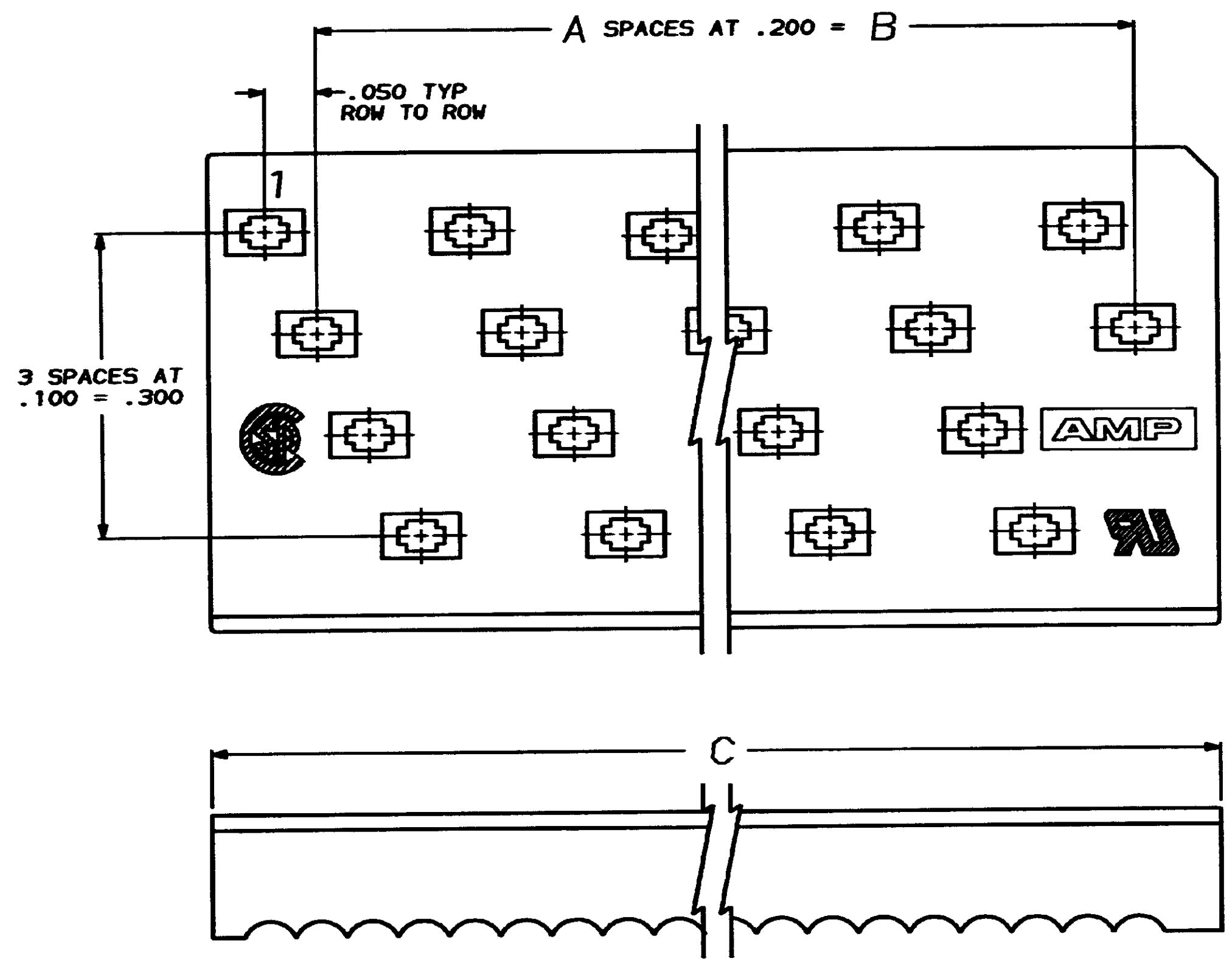


LOG	REV	DATE	BY	CHK	ZONE	LTR	DESCRIPTION	DATE	APPD
AR	39					0	RELEASED WAS 88-5130-6		
					A		REVSD/ECN CF-1706		



2.986	2.800	14	58	1-111359-3
2.786	2.600	13	54	1- -2
2.586	2.400	12	50	1- -1
2.386	2.200	11	46	1- -0
2.186	2.000	10	42	- -9
1.986	1.800	9	38	- -8
1.786	1.600	8	34	- -7
1.586	1.400	7	30	- -6
1.386	1.200	6	26	- -5
1.186	1.000	5	22	- -4
.986	.800	4	18	- -3
.786	.600	3	14	- -2
.586	.400	2	10	111359-1
C	B	A	NO OF POSN	PART NUMBER

DO NOT SCALE PRINT. UNLESS SPECIFIED DIMENSIONS IN INCHES TOLERANCES ON + 2 PLC DEC ± - 3 PLC DEC ± .005 ANGLES ± 0°30'	DR - S. Weiden 2-25-88 CHK - W. G. Lamber 2-25-88 APPD - M. A. Vise 2-25-88 APPD - D. Hoffman 2-25-88	AMP INCORPORATED Harrisburg, Pa. 17105
MATERIAL FLAME RETARDANT, 94 V-0 RATED, GLASS FILLED POLYESTER, COLOR: BLACK	PRODUCT SPEC -	NAME COVER, PADDLEBOARD, SHORT END, AMP-LATCH
FINISH -	APPLICATION SPEC -	SIZE D FSCN NO 00779 DRAWING NO 111359
WEIGHT -	SCALE 10:1	SHEET -OF-

CUSTOMER DRAWING