

HOW TO INSTALL DISPLAY RACK...

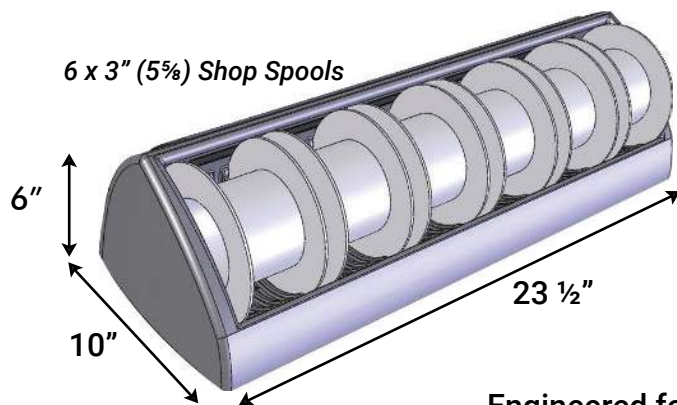
Display Rack

Part # DSN0.00BK



For By-The-Foot Sales & Easy Access & Inventory Management

Spool and product management is now simpler and more efficient than ever. Our new display/dispenser rack allows easy control of sleeving inventories and provides a controlled system of neatly dispensing directly from the spools. The rack is constructed from tough ABC plastic, with plenty of room for a wide range of products. The spools simply drop into the preformed slots and turn freely for dispensing. Full visibility and access ensures easy management of remaining inventory and simple drop-in replacement of empty spools.

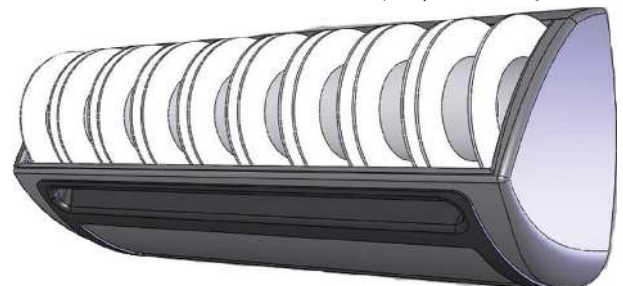


6 x 3" (5%) Shop Spools

←... Space saving, easy access design

Engineered for easy and secure wall mounting →

9 x 2" (5%) Retail Spools



The display racks can be installed on:

- Slot Wall
- Grid Wall
- Counter
- Wall

HOW TO INSTALL DISPLAY RACK...

a). SLOT WALL

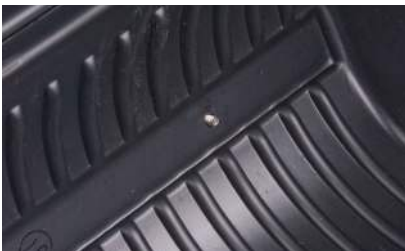
Step 1
Insert screws in Z plate.



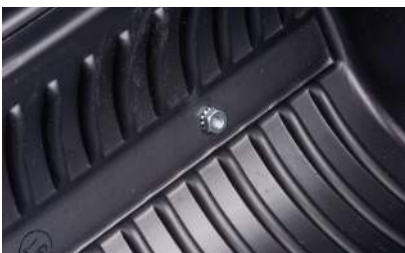
Step 2
Install plates on a slot wall.



Step 3
Mount rack aligning screws.



Step 4
Install nuts.



Step 5
Display rack on a slot wall.



b). GRID WALL

Step 1
Insert screws through a grid wall hook into the back of a display rack.



Step 2
Install nuts.



Step 3
Hang display rack on a grid wall.



c). COUNTER

Place your display rack on any flat surface.



d). WALL

Screw your display rack directly to the wall.



You can also add anchors for extra support.



The display rack holds up to:
6 x 3" (5 $\frac{5}{8}$) Shop Spools or 9 x 2" (5 $\frac{5}{8}$) Retail Spools.