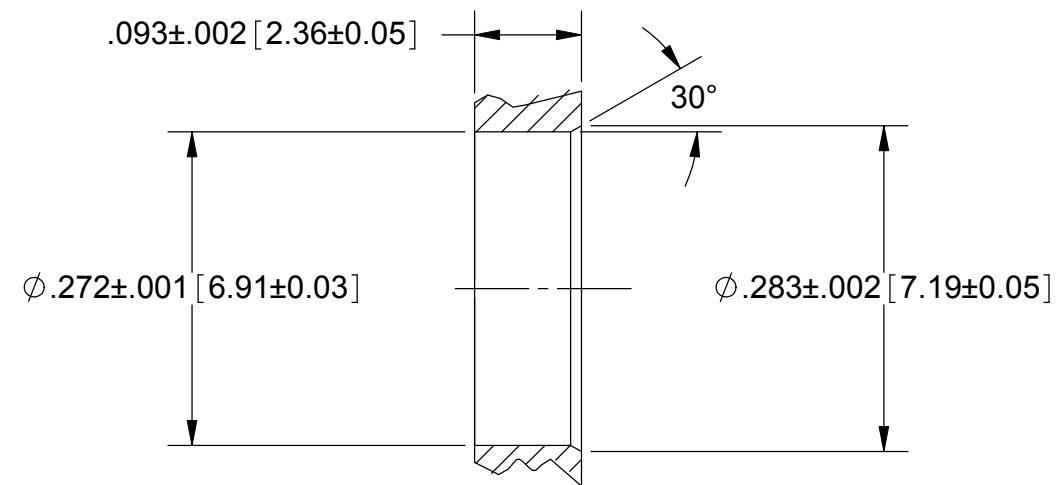
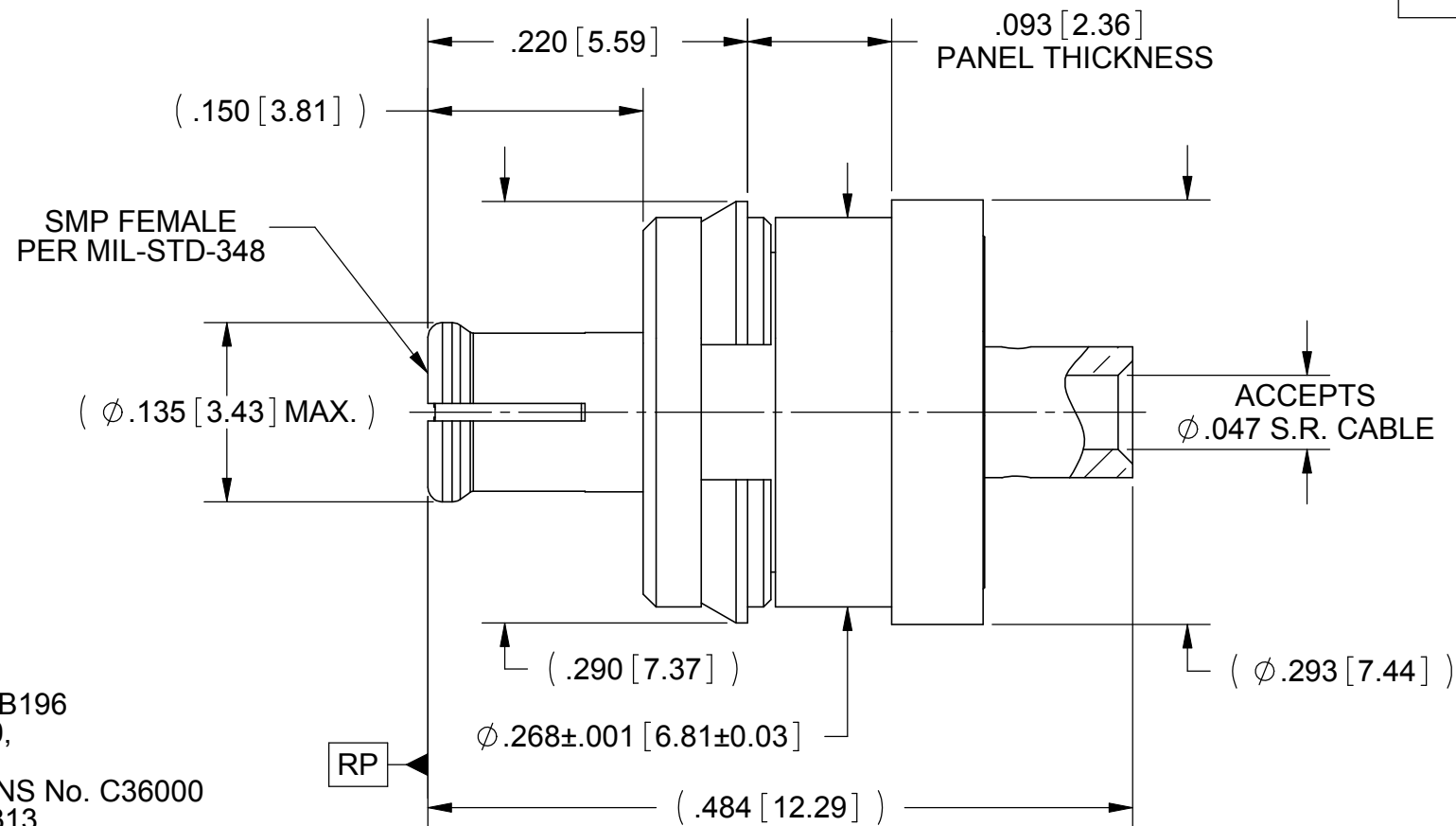
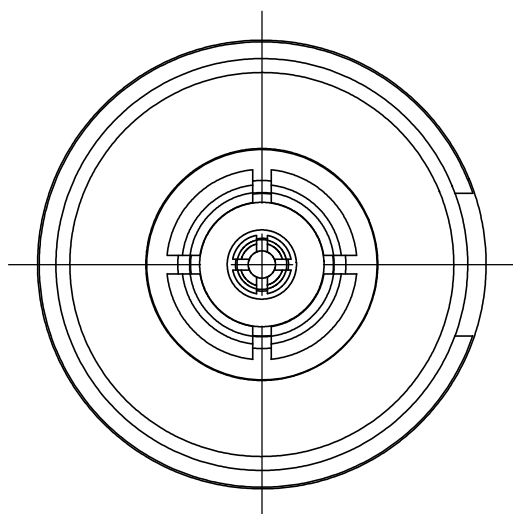


# PRODUCT DATA DRAWING

REVISION HISTORY			
REV	DESCRIPTION	DATE	APPROVED
-	DCN 35561	12/07	STW
A	DCN 37782	09/10	PJS



RECOMMENDED MOUNTING HOLE

**MATERIALS:**

BODIES, CONTACT & SPRING CLIP: BERYLLIUM COPPER PER ASTM B196  
 SLEEVE & INSERT: STAINLESS STEEL PER AMS 5640, ALLOY No. UNS S30300, TYPE 1  
 BUSHING: BRASS PER ASTM B16, ALLOY UNS No. C36000  
 SPRING: STAINLESS STEEL PER ASTM A313  
 INSULATOR: PTFE PER ASTM D1710  
 DIELECTRIC SPACER: TORLON 4203  
 HEAT SHRINK TUBING: AMS-DTL-23053 (NOT SHOWN)

**FINISHES:**

BODIES, CONTACT & SPRING CLIP: GOLD PER ASTM B488, TYPE II GRADE C, CLASS 1.27, OVER NICKEL PER AMS-QQ-N-290, CLASS 1  
 BUSHING: NICKEL PER AMS-QQ-N-290, CLASS 2  
 SLEEVE, INSERT & SPRING: PASSIVATED PER AMS 2700

**ELECTRICAL:**

IMPEDANCE: 50 OHMS  
 FREQ. RANGE: DC TO 40.0 GHZ  
 VSWR: 1.15:1 DC TO 18.0 GHZ.  
 1.25:1 DC TO 26.5 GHZ.  
 INSERTION LOSS: 0.25 dB MAX.  
 D.W.V.: 500 VRMS  
 INSULATION RES.: 5,000 MEGOHMS MINIMUM

**FLOAT:**

AXIAL FLOAT: .040 INCH  
 RADIAL FLOAT: .020 INCH

**SPRING FORCE:**

SPRING RATE: 39 LBS/INCH NOM.  
 PRE-LOAD: 0.81 LBS NOM.  
 .035" COMPRESSION: 2.15 LBS NOM.  
 .125" COMPRESSION: 5.6 LBS NOM.

MATERIAL: SEE NOTES	DIMENSIONS ARE IN INCHES TOLERANCES: FRACTIONAL: ±1/64 ANGULAR: X° ±1'0" X"X' ±15'	UNLESS OTHERWISE SPECIFIED 1) ALL DIMENSIONS ARE IN INCHES (MILLIMETERS) 2) ALL DIMENSIONS ARE AFTER PLATING 3) BREAK CORNERS & EDGES .005 R. MAX. 4) CHAM. 1ST & LAST THREADS. 5) SURFACE ROUGHNESS 63-MIL-STD-10. 6) DIA. 'S ON COMMON CENTERS TO BE CONCENTRIC WITHIN .005 T.I.R. 7) REMOVE ALL BURRS	<b>SV Microwave, Inc.</b> 2400 Centrepark West Drive, Suite 100 West Palm Beach, FL 33409
FINISH: SEE NOTES	DECIMAL: X ±.030 XX ±.010 XXX ±.005	INTERPRET DIMENSIONS AND TOLERANCES PER ASME Y14.5M - 1994	TITLE: SMP FEMALE, FLOAT MOUNT FOR S.R. φ .047, φ .093" PANEL THK.
SURFACE AREA: N/A	THIRD ANGLE PROJECTION	DRAWN: HLP 12/17/07 CHECKED: STW 12/17/0 APPROVED: STW 12/17/0	SIZE: B CAGE CODE: 95077 DWG. NO. 1221-6001
PROPRIETARY THE INFORMATION CONTAINED IN THIS DRAWING IS THE SOLE PROPERTY OF SV MICROWAVE, INC. ANY REPRODUCTION IN PART OR AS A WHOLE WITHOUT THE WRITTEN PERMISSION OF SV MICROWAVE, INC IS PROHIBITED.			SCALE: 8:1 SHEET 1 OF 1