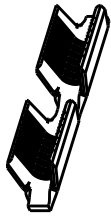
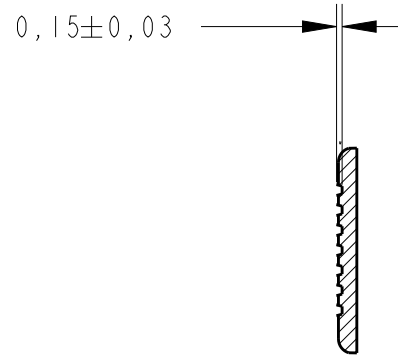
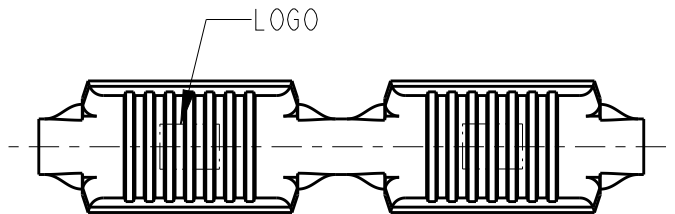


REVISIONS

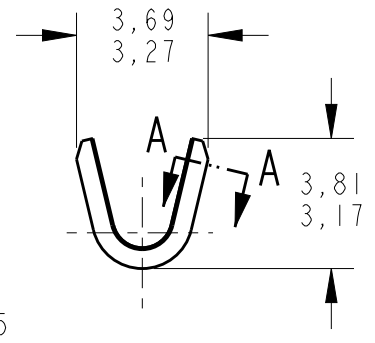
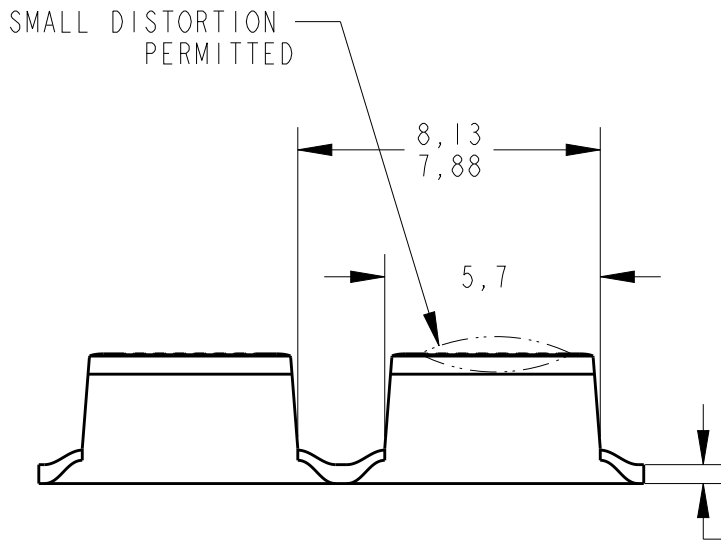
P	LTR	DESCRIPTION	DATE	DWN	APVD
	R2	REDRAWN AND REVISED BY ECO 16-010925	25JULY2016	HC	WLS



SCALE 2:1



SECTION A - A



0,50±0,05

⚠ -NOT FOR USE WITH ALUMINUM MAGNET WIRE,  
USE WITH COPPER MAGNET WIRE ONLY.

WIRE RANGE  
600-3000 CMA


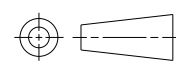
TIN-PLATED	BRASS	280005-2
—	BRASS	280005-1 ⚠
FINISH	MATERIAL	PART NUMBER

RELEASED FOR PUBLICATION

ALL RIGHTS RESERVED.

THIS DRAWING IS UNPUBLISHED.

© COPYRIGHT copyright\_date

DIMENSIONS: mm	DWN H.C. CANTERI 20JAN2015	MATERIAL -	FINISH -
TOLERANCES UNLESS OTHERWISE SPECIFIED:	CHK W.L. STEFANI 22JAN2015	 TE Connectivity	
0 PLC ±-	APVD -		
1 PLC ±0,2	PRODUCT SPEC -	NAME AMPLIVAR SPLICE	
2 PLC ±0,4	APPLICATION SPEC -	SIZE A4	CAGE CODE -
3 PLC ±-	WEIGHT -	DRAWING NO C-280005	RESTRICTED TO -
4 PLC ±-			
ANGLES ±-			
	CUSTOMER DRAWING	SCALE 5:1	SHEET 1 OF 1
			REV R2